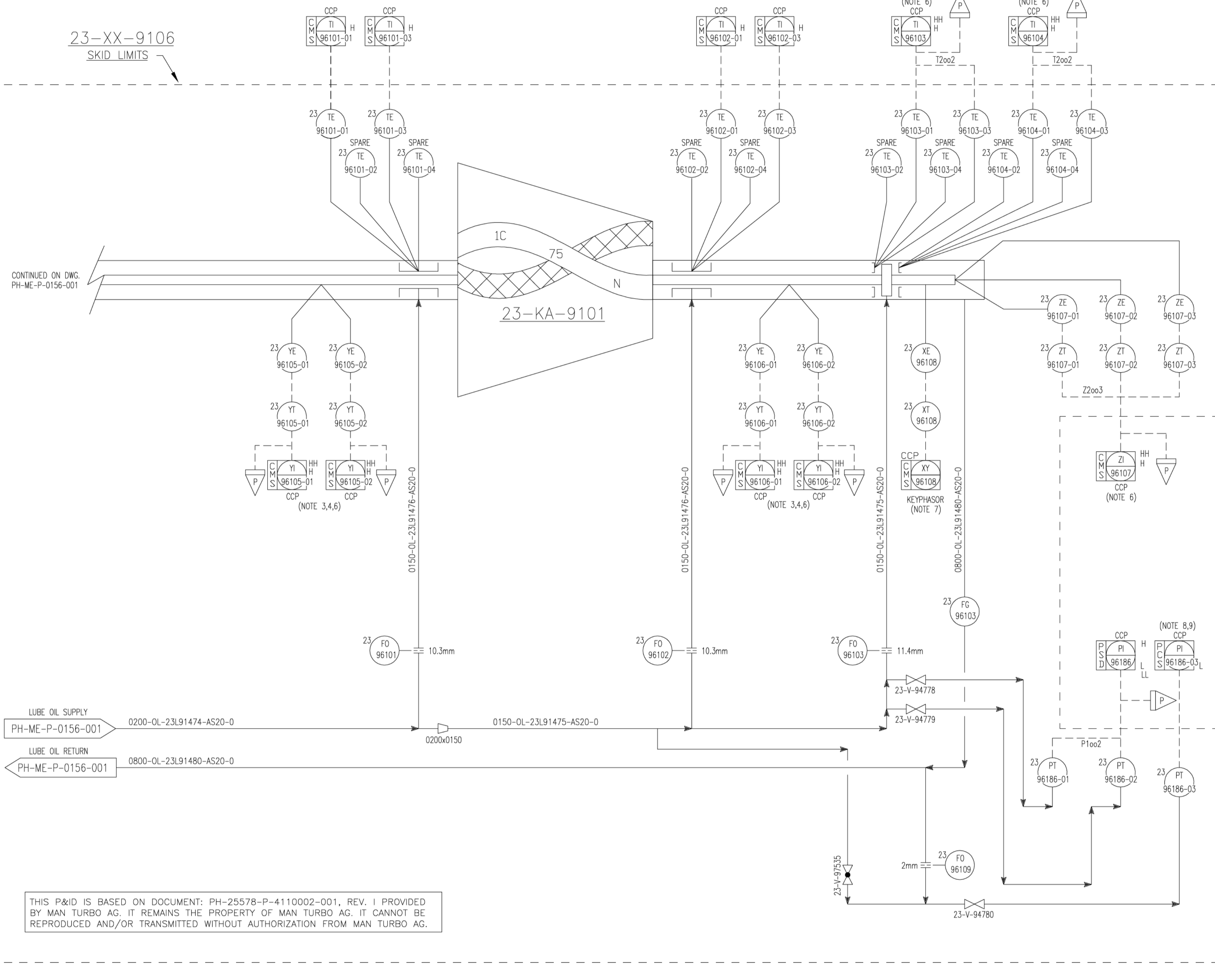


23-XX-9106
1ST STAGE COMPRESSOR SKID

23-KA-9101
1ST STAGE COMPRESSOR
CAPACITY: 4.8M SM3/D AT 8.9 DELTA BAR
POWER: 9340 kW
SPEED: 6273 rpm



NOTES:

1. ALL TUBING AND FITTINGS TO BE 6MO.
2. ALL SIGNALS INDICATED AS MONITOR DISPLAY IN THE CONTROL UNIT WILL ALSO BE DISPLAYED IN THE MONITOR DISPLAY IN THE DCS (SAS-HM).
3. TRIP ON VIBRATION ONLY IF ONE PROBE REACHES TRIP AND THE SECOND PROBE ALARM VALUE.
4. SYSTEM MONITORING INCLUDING VOTING LOGIC (WHERE APPLICABLE) PERFORMED IN COMPRESSOR UCP NO.1. VIBRATION AND TEMPERATURE MONITORING INCLUDING SHUTDOWN LOGIC PERFORMED IN UCP PSD.
5. CMS SIGNALS TRANSFERRED TO PCS VIA MODBUS.
6. TRIP W/O BLOWDOWN.
7. REFERENCE FOR HIGH SPEED.
8. OIL PUMP AUTOMATIC CONTROL.
9. STARTUP INTERLOCKING SYSTEM.

| REV | DATE | BY | DESCRIPTION | CHK | ENGR | APPR | CLIENT |
|-----|----------|----|-------------|-----|------|------|--------|
| Z | 08.07.13 | | AS BUILT | | | | |



Wood Group Engineering
(North Sea) Ltd.



MUSTANG INTERNATIONAL, LP
HOUSTON, TEXAS



REGISTRATION CODES

AREA SYSTEM TYPE

T 23 XB

VALHALL
RE-DEVELOPMENT PROJECT
PIPING & INSTRUMENT DIAGRAM
1ST STAGE COMPR. TEMP. & VIBRATION MONITORING

DRAWING NO.

ORIG. DISP. SEQ. No. SHEET

PH ME P 0156 002

SCALE

NONE

REV.

Z