



# **DEVSIM Manual**

*Release 2.7.0*

**DEVSIM LLC**



# Contents

<b>Contents</b>	<b>x</b>
<b>List of Figures</b>	<b>xi</b>
<b>List of Tables</b>	<b>xiii</b>
<b>1 Front Matter</b>	<b>1</b>
1.1 Contact . . . . .	1
1.2 Copyright . . . . .	1
1.3 Citing this Work . . . . .	1
1.4 Documentation License . . . . .	1
1.5 Disclaimer . . . . .	2
1.6 Trademark . . . . .	2
<b>2 Release Notes</b>	<b>3</b>
2.1 Introduction . . . . .	3
2.2 Version 2.7.0 . . . . .	3
2.2.1 Error Handling . . . . .	3
2.3 Version 2.6.5 . . . . .	4
2.3.1 Bugs . . . . .	4
2.4 Version 2.6.4 . . . . .	4
2.4.1 SuperLU . . . . .	4
2.4.2 Android . . . . .	4
2.4.3 Examples . . . . .	4
2.5 Version 2.6.3 . . . . .	4
2.6 Version 2.6.2 . . . . .	4
2.7 Version 2.6.1 . . . . .	5
2.7.1 Bugs . . . . .	5
2.8 Version 2.6.0 . . . . .	5
2.8.1 Symbolic Factorization Reuse . . . . .	5
2.8.2 Reset Simulator . . . . .	5
2.8.3 Build Infrastructure . . . . .	5
2.8.3.1 LAPACK is Optional . . . . .	5
2.8.3.2 Self Contained Build . . . . .	5
2.8.3.3 SuperLU Solver . . . . .	6
2.8.4 Citing DEVSIM . . . . .	6
2.8.5 Documentation . . . . .	6

2.9	Version 2.5.0	6
2.10	Version 2.4.0	6
2.10.1	Determine Loaded Math Libraries	6
2.10.2	UMFPACK 5.1 Solver	7
2.10.3	Direct Solver Callback	7
2.10.4	Apple M1	7
2.10.5	Bugs	7
2.11	Version 2.3.8	8
2.11.1	Bugs	8
2.12	Version 2.3.7	8
2.12.1	Apple M1 Support	8
2.12.2	Python Notebook Example With 3D Visualization	8
2.12.3	Bugs	8
2.13	Version 2.3.6	8
2.14	Release 2.3.1	9
2.14.1	Python PIP Package	9
2.14.2	Remove Windows MSYS Build	9
2.14.3	Build Notes	9
2.15	Release 2.2.0	10
2.15.1	Device and mesh deletion commands	10
2.15.2	Extended Precision	10
2.15.3	Direct Solver	10
2.15.4	Code Quality	10
2.16	Release 2.1.0	10
2.16.1	Explicit math library loading	10
2.16.1.1	Intel MKL	10
2.16.1.2	Loading other math libraries	11
2.16.2	Direct solver selection	11
2.16.3	Kahan summation in extended precision mode	11
2.16.4	Visual Studio 2022	12
2.17	Release 2.0.1	12
2.17.1	Update documentation files	12
2.17.2	Update MKL Version	12
2.18	Release 2.0.0	12
2.18.1	New Major Version	12
2.18.2	Contact and Interface Equation Commands	12
2.18.3	Documentation	13
2.18.3.1	Manual	13
2.18.3.2	Documentation Files	13
2.18.4	Python Packages	13
2.18.5	Solver	13
2.18.5.1	Transient Simulation	13
2.18.5.2	Convergence Tests	14
2.18.5.3	Verbosity	14
2.18.5.4	Intel Math Kernel Library	14
2.18.5.5	SuperLU	14
2.18.5.6	Simulation Matrix	14
2.18.6	Add Interface supporting Periodic Boundary Conditions	14

2.18.7	Build Scripts . . . . .	14
2.19	Release 1.6.0 . . . . .	15
2.19.1	Array Type Input and Output . . . . .	15
2.19.2	Get Matrix and RHS for External Use . . . . .	15
2.19.3	Maximum Divergence Count . . . . .	15
2.19.4	Mesh Visualization Element Orientation . . . . .	15
2.19.5	Figure annotation . . . . .	15
2.19.6	Citation . . . . .	16
2.19.7	Documentation License . . . . .	16
2.19.8	Online Forum . . . . .	16
2.20	Release 1.5.1 . . . . .	16
2.20.1	Installation Script . . . . .	16
2.20.2	Math Functions Table . . . . .	17
2.20.3	Error Functions . . . . .	17
2.20.4	Fermi Integral . . . . .	17
2.20.5	Gauss-Fermi Integral . . . . .	17
2.21	Release 1.5.0 . . . . .	18
2.22	Release 1.4.14 . . . . .	19
2.22.1	Platforms . . . . .	19
2.23	Release 1.4.13 . . . . .	19
2.24	Release 1.4.12 . . . . .	19
2.25	Release 1.4.11 . . . . .	20
2.26	Release 1.4.10 . . . . .	20
2.27	Release 1.4.9 . . . . .	20
2.28	Release 1.4.8 . . . . .	20
2.29	Release 1.4.7 . . . . .	20
2.29.1	Models . . . . .	20
2.29.2	Platforms . . . . .	21
2.30	Release 1.4.6 . . . . .	21
2.30.1	Version Information . . . . .	21
2.30.2	Extended Precision . . . . .	21
2.30.3	Python Formatting . . . . .	21
2.30.4	Platforms . . . . .	21
2.30.5	External Meshing . . . . .	21
2.31	Release 1.4.5 . . . . .	22
2.32	Release 1.4.4 . . . . .	22
2.32.1	Bug Fixes . . . . .	22
2.32.2	Documentation . . . . .	22
2.32.3	Internal changes . . . . .	22
2.33	Release 1.4.3 . . . . .	22
2.34	Release 1.4.2 . . . . .	23
2.35	Release 1.4.1 . . . . .	23
2.35.1	Math Functions . . . . .	23
2.35.2	Element Model Memory Leak . . . . .	23
2.35.3	Python 3 API Memory Leak . . . . .	23
2.36	Release 1.4.0 . . . . .	23
2.37	Release 1.3.0 . . . . .	24
2.37.1	Python 3 Examples . . . . .	24

2.37.2	Tcl Support Deprecated . . . . .	24
2.37.3	Binary Releases . . . . .	24
2.37.3.1	Scripting Languages . . . . .	24
2.37.3.2	Math Library . . . . .	24
2.38	Release 1.2.0 . . . . .	24
2.39	Release 1.1.0 . . . . .	25
2.40	Release 1.0.0 . . . . .	25
2.40.1	Documentation . . . . .	25
2.40.2	Version . . . . .	25
2.40.3	Operating Systems . . . . .	25
2.40.4	Python Support . . . . .	26
2.40.5	GMSH Support . . . . .	27
2.40.6	CGNS Support . . . . .	27
2.41	July 20, 2018 . . . . .	27
2.41.1	Documentation . . . . .	27
2.41.2	Python 3 Support . . . . .	27
2.41.3	Element Information . . . . .	27
2.41.4	Interface Boundary Condition . . . . .	27
2.41.5	Interface Equation Coupling . . . . .	28
2.41.6	Interface and Contact Surface Area . . . . .	28
2.41.7	Bug Fixes . . . . .	28
2.41.8	Extended Precision . . . . .	28
2.42	May 15, 2017 . . . . .	28
2.42.1	Platforms . . . . .	28
2.42.2	Binary Releases . . . . .	29
2.42.3	Bug Fixes . . . . .	29
2.42.4	Enhancements . . . . .	29
2.42.5	Example Availability . . . . .	29
2.43	February 6, 2016 . . . . .	29
2.44	November 24, 2015 . . . . .	30
2.44.1	Python Help . . . . .	30
2.44.2	Manual Updates . . . . .	30
2.45	November 1, 2015 . . . . .	30
2.45.1	Convergence Info . . . . .	30
2.45.2	Python Interpreter Changes . . . . .	30
2.45.3	Platform Improvements and Binary Availability . . . . .	30
2.46	September 6, 2015 . . . . .	31
2.47	August 10, 2015 . . . . .	31
2.48	July 16, 2015 . . . . .	31
2.49	June 7, 2015 . . . . .	32
2.50	October 4, 2014 . . . . .	32
2.50.1	Platform Availability . . . . .	32
2.51	December 25, 2013 . . . . .	32
2.51.1	Binary Availability . . . . .	32
2.51.2	Platforms . . . . .	33
2.51.3	Source code improvements . . . . .	33
2.52	September 8, 2013 . . . . .	33
2.52.1	Convergence . . . . .	33

2.52.2	Bernoulli Function Derivative Evaluation . . . . .	33
2.52.3	Default Edge Model . . . . .	33
2.53	August 14, 2013 . . . . .	33
2.53.1	SYMDIFF functions . . . . .	33
2.53.2	Default Node Models . . . . .	34
2.53.3	Set Node Value . . . . .	34
2.53.4	Fix Edge Average Model . . . . .	34
2.54	July 29, 2013 . . . . .	34
2.54.1	DEVSIM is open source . . . . .	34
2.54.2	Build . . . . .	34
2.54.3	Contact Material . . . . .	34
2.54.4	External Meshing . . . . .	34
2.54.5	Math Functions . . . . .	35
2.54.6	Test directory structure . . . . .	35
<b>3</b>	<b>Introduction</b>	<b>37</b>
3.1	Overview . . . . .	37
3.2	Goals . . . . .	37
3.3	Structures . . . . .	38
3.4	Equation assembly . . . . .	38
3.5	Parameters . . . . .	38
3.6	Circuits . . . . .	38
3.7	Meshing . . . . .	38
3.8	Analysis . . . . .	38
3.9	Scripting interface . . . . .	39
3.10	Expression parser . . . . .	39
3.11	Visualization and postprocessing . . . . .	39
3.12	Installation . . . . .	39
3.13	Additional information . . . . .	39
3.14	Examples . . . . .	39
<b>4</b>	<b>Equation and Models</b>	<b>41</b>
4.1	Overview . . . . .	41
4.2	Bulk models . . . . .	45
4.2.1	Node models . . . . .	45
4.2.2	Edge models . . . . .	46
4.2.3	Element edge models . . . . .	46
4.2.4	Model derivatives . . . . .	47
4.2.5	Conversions between model types . . . . .	47
4.2.6	Equation assembly . . . . .	48
4.3	Interface . . . . .	48
4.3.1	Interface models . . . . .	48
4.3.2	Interface model derivatives . . . . .	50
4.3.3	Interface equation assembly . . . . .	50
4.4	Contact . . . . .	50
4.4.1	Contact models . . . . .	50
4.4.2	Contact model derivatives . . . . .	51
4.4.3	Contact equation assembly . . . . .	51

4.5	Custom Matrix assembly . . . . .	52
4.6	Cylindrical Coordinate Systems . . . . .	53
<b>5</b>	<b>Parameters</b>	<b>55</b>
5.1	Parameters . . . . .	55
5.2	Environment Variables . . . . .	56
5.3	Material database entries . . . . .	56
5.4	Discussion . . . . .	57
<b>6</b>	<b>Circuits</b>	<b>59</b>
6.1	Circuit elements . . . . .	59
6.2	Connecting devices . . . . .	59
<b>7</b>	<b>Meshing</b>	<b>61</b>
7.1	1D mesher . . . . .	61
7.2	2D mesher . . . . .	62
7.3	Using an external mesher . . . . .	63
7.3.1	Gmsh . . . . .	63
7.3.2	Custom mesh loading using scripting . . . . .	64
7.4	Loading and saving results . . . . .	64
<b>8</b>	<b>Solver</b>	<b>65</b>
8.1	Solver . . . . .	65
8.2	DC analysis . . . . .	65
8.3	AC analysis . . . . .	65
8.4	Noise/Sensitivity analysis . . . . .	65
8.5	Transient analysis . . . . .	66
<b>9</b>	<b>User Interface</b>	<b>67</b>
9.1	Starting DEVSIM . . . . .	67
9.2	Python Language . . . . .	67
9.2.1	Introduction . . . . .	67
9.2.2	DEVSIM commands . . . . .	68
9.2.3	Advanced usage . . . . .	68
9.2.4	Unicode Support . . . . .	68
9.3	Error handling . . . . .	68
9.3.1	Python errors . . . . .	68
9.3.2	Fatal errors . . . . .	68
9.3.3	Floating point exceptions . . . . .	69
9.3.4	Solver errors . . . . .	69
9.3.5	Verbosity . . . . .	69
9.3.6	Parallelization . . . . .	69
<b>10</b>	<b>SYMDIFF</b>	<b>71</b>
10.1	Overview . . . . .	71
10.2	Syntax . . . . .	71
10.2.1	Variables and numbers . . . . .	71
10.2.2	Basic expressions . . . . .	72
10.2.3	Functions . . . . .	73

10.2.4	Commands	74
10.2.5	User functions	75
10.2.6	Macro assignment	76
10.3	Invoking SYMDIFF from DEVSIM	76
10.3.1	Equation parser	76
10.3.2	Evaluating external math	77
10.3.3	Models	77
<b>11</b>	<b>Visualization</b>	<b>79</b>
11.1	Introduction	79
11.2	Using Tecplot	79
11.3	Using Postmini	79
11.4	Using Paraview	79
11.5	Using VisIt	80
11.6	DEVSIM	80
<b>12</b>	<b>Installation</b>	<b>81</b>
12.1	Availability	81
12.2	Supported platforms	81
12.3	Binary availability	81
12.4	Source code availability	82
12.5	Directory Structure	82
12.6	Running DEVSIM	82
<b>13</b>	<b>Additional Information</b>	<b>83</b>
13.1	DEVSIM License	83
13.2	SYMDIFF	83
13.3	External Software Tools	83
13.3.1	Gmsh	83
13.3.2	Paraview	83
13.3.3	Tecplot	84
13.3.4	VisIt	84
13.4	Library Availabilty	84
13.4.1	BLAS and LAPACK	84
13.4.2	Python	84
13.4.3	SQLite3	84
13.4.4	SuperLU	84
13.4.5	zlib	85
<b>14</b>	<b>Command Reference</b>	<b>87</b>
14.1	Circuit Commands	87
14.2	Equation Commands	89
14.3	Geometry Commands	93
14.4	Material Commands	94
14.5	Meshing Commands	97
14.6	Model Commands	102
14.7	Solver Commands	117

<b>15 Example Overview</b>	<b>119</b>
15.1 capacitance . . . . .	119
15.2 diode . . . . .	119
15.3 bioapp1 . . . . .	119
15.4 vector_potential . . . . .	120
15.5 mobility . . . . .	121
<b>16 Capacitor</b>	<b>123</b>
16.1 Overview . . . . .	123
16.2 1D Capacitor . . . . .	123
16.2.1 Equations . . . . .	123
16.2.2 Creating the mesh . . . . .	123
16.3 Setting device parameters . . . . .	124
16.3.1 Creating the models . . . . .	124
16.3.2 Contact boundary conditions . . . . .	126
16.3.3 Setting the boundary conditions . . . . .	126
16.3.4 Running the simulation . . . . .	127
16.4 2D Capacitor . . . . .	127
16.5 Defining the mesh . . . . .	128
16.6 Setting up the models . . . . .	129
16.7 Fields for visualization . . . . .	131
16.8 Running the simulation . . . . .	131
<b>17 Diode</b>	<b>135</b>
17.1 1D diode . . . . .	135
17.1.1 Using the python packages . . . . .	135
17.1.2 Creating the mesh . . . . .	136
17.2 Physical Models and Parameters . . . . .	136
17.2.1 Plotting the result . . . . .	138
<b>Bibliography</b>	<b>143</b>
<b>Index</b>	<b>145</b>

# List of Figures

4.1	Mesh elements in 2D. . . . .	42
4.2	Edge model constructs in 2D. . . . .	43
4.3	Element edge model constructs in 2D. . . . .	44
4.4	Interface constructs in 2D. Interface node pairs are located at each •. The <code>SurfaceArea</code> model is used to integrate flux term models. . . . .	49
4.5	Contact constructs in 2D. . . . .	51
15.1	Simulation result for solving for the magnetic potential and field. The coloring is by the <code>Z</code> component of the magnetic potential, and the stream traces are for components of magnetic field. . . . .	120
16.1	Capacitance simulation result. The coloring is by <code>Potential</code> , and the stream traces are for components of <code>ElectricField</code> . . . . .	133
17.1	Carrier density versus position in 1D diode. . . . .	139
17.2	Potential and electric field versus position in 1D diode. . . . .	140
17.3	Electron and hole current and recombination. . . . .	141



# List of Tables

1.1	Contact . . . . .	1
4.1	Node models defined on each region of a device. . . . .	45
4.2	Edge models defined on each region of a device. . . . .	46
4.3	Element edge models defined on each region of a device. . . . .	47
4.4	Required derivatives for equation assembly. <code>model</code> is the name of the model being evaluated, and <code>variable</code> is one of the solution variables being solved at each node. . . . .	47
4.5	Required derivatives for interface equation assembly. The node model name <code>nodemodel</code> and its derivatives <code>nodemodel:variable</code> are suffixed with <code>@r0</code> and <code>@r1</code> to denote which region on the interface is being referred to. . . . .	48
5.1	Parameters controlling program behavior. . . . .	56
5.2	Environment controlling program behavior. . . . .	56
10.1	Basic expressions involving unary, binary, and logical operators. . . . .	72
10.2	Predefined Functions . . . . .	73
10.3	Error Functions . . . . .	73
10.4	Fermi Integral Functions . . . . .	74
10.5	Gauss-Fermi Integral Functions . . . . .	74
10.6	Commands. . . . .	74
10.7	Commands for user functions. . . . .	75
12.1	Current platforms for DEVSIM. . . . .	81
12.2	Directory structure for DEVSIM. . . . .	82
17.1	Python package files. . . . .	135



# Chapter 1

## Front Matter

### 1.1 Contact

Table 1.1: Contact

Web:	<a href="https://devsim.com">https://devsim.com</a>
Email:	<a href="mailto:info@devsim.com">info@devsim.com</a>
Open Source Project:	<a href="https://devsim.org">https://devsim.org</a>
Online Documentation:	<a href="https://devsim.net">https://devsim.net</a>
Online Forum:	<a href="https://forum.devsim.org">https://forum.devsim.org</a>

### 1.2 Copyright

Copyright © 2009–2023 DEVSIM LLC

### 1.3 Citing this Work

Please check CITATION.md in the distribution for suggestions on how to cite this work.

### 1.4 Documentation License

This work is licensed under the Creative Commons Attribution 4.0 International License. To view a copy of this license, visit <http://creativecommons.org/licenses/by/4.0/>.

## **1.5 Disclaimer**

DEVSIM LLC MAKES NO WARRANTY OF ANY KIND, EXPRESS OR IMPLIED, WITH REGARD TO THIS MATERIAL, INCLUDING, BUT NOT LIMITED TO, THE IMPLIED WARRANTIES OF MERCHANTABILITY AND FITNESS FOR A PARTICULAR PURPOSE.

## **1.6 Trademark**

DEVSIM is a registered trademark and SYMDIFF is a trademark of DEVSIM LLC. All other product or company names are trademarks of their respective owners.

## Chapter 2

# Release Notes

### 2.1 Introduction

DEVSIM download and installation instructions are located in [Installation](#) (page 81). The following sections list bug fixes and enhancements over time. Contact information is listed in [Contact](#) (page 1). A file named `CHANGES.md` is now distributed with DEVSIM, which can contain additional details concerning a new release.

### 2.2 Version 2.7.0

#### 2.2.1 Error Handling

More helpful exception information returned to Python if the error is considered fatal. This can be used to decide if the simulation can be restarted. Note that if this occurs during a solve, it is necessary for the user to restore the previous circuit and device solutions if a restart is desired. In addition, model evaluation is reset so that no false cyclic dependencies are reported after an error.

In this example code below, the previously DEVSIM FATAL error string will now provide the context that a floating point exception occurred and be handled in Python.

```
try:
    self.solve()
except error as msg:
    m = str(msg)
    if 'Convergence failure' in m:
        self.set_vapp(last_bias)
    elif 'floating point exception' in m:
        self.set_vapp(last_bias)
        self.restore_callback(self.is_circuit)
    else:
        raise
```

## 2.3 Version 2.6.5

### 2.3.1 Bugs

Fixed issue [#123](<https://github.com/devsim/devsim/issues/123>) identified by [@gluek](<https://github.com/gluek>) This resulted in bad results on Windows and macOS in calculation of 3d mesh areas and volumes.

## 2.4 Version 2.6.4

### 2.4.1 SuperLU

Use MMD\_ATA preconditioner for SuperLU builds.

### 2.4.2 Android

Android builds use special implementations for the Bernoulli function to prevent overflow.

### 2.4.3 Examples

`testing/pythonmesh1d.py` demonstrates how to get mesh information using `devsim.get_element_node_list()` (page 93).

`examples/diode/tran_diode.py` demonstrates transient diode simulation.

## 2.5 Version 2.6.3

Allow Python threading during long solve operations.

## 2.6 Version 2.6.2

`delete_circuit`

`get_mesh_list`

## 2.7 Version 2.6.1

### 2.7.1 Bugs

Fix issue [#116](<https://github.com/devsim/devsim/issues/116>) where the contact current was being calculated incorrectly in transient mode.

## 2.8 Version 2.6.0

### 2.8.1 Symbolic Factorization Reuse

The Intel MKL solver will now use reuse the symbolic factorization, if the simulation matrix sparse matrix pattern has not changed after the second nonlinear solver iteration. This reduces simulation time, but can result in numerical differences in the simulation result. Setting the environment variable, `DEVSIM_NEW_SYMBOLIC`, will do a new symbolic factorization for each iteration.

This behavior may be controlled by using this option in the `devsim.solve()` (page 118) command

```
solve(symbolic_iteration_limit = -1)
```

where setting the value to `-1` will create a new symbolic factorization for all nonlinear iterations. Setting the value to a number greater than `0` will mark all iterations afterwards for reusing the previous symbolic factorization.

### 2.8.2 Reset Simulator

The `reset_devsim` command will clear all simulator data, so that a program restart is not necessary.

### 2.8.3 Build Infrastructure

#### 2.8.3.1 LAPACK is Optional

When LAPACK functions are not available, it is now possible to use Eigen instead. BLAS is still required. It is up to the direct solver being used to determine necessary LAPACK functions.

#### 2.8.3.2 Self Contained Build

The build infrastructure is being updated to support a small application build on different systems.

### 2.8.3.3 SuperLU Solver

For self contained builds, some commands are removed and SuperLU is the only available solver.

### 2.8.4 Citing DEVSIM

CITATION.md has been updated with recent articles written about the simulator.

### 2.8.5 Documentation

Fix documentation issue in *1D diode* (page 135) where the length of the 1D diode was incorrect.

Fix issue where `surface_area_model` was missing from *Parameters controlling program behavior*. (page 56).

Added table of environment variables controlling program behavior in *Environment controlling program behavior*. (page 56).

## 2.9 Version 2.5.0

UMFPACK 5.1 is the new default when the Intel MKL is not available, making this the default for the macOS arm64 platform.

SuperLU is removed and no longer available as a solver.

Regression scripts were passing when there were numerical differences in the data diff comparison. This is now corrected and the regression results have been updated on all platforms.

For those building the software, the `EXPLICIT_MATH_LOAD` CMAKE option has been removed, so that the software is not directly linked to any math library.

The license text for the Apache 2.0 license has been replaced with the SPDX format of the license string. This ensures that the text can be used in a consistent manner across all source files.

## 2.10 Version 2.4.0

### 2.10.1 Determine Loaded Math Libraries

To determine the loaded math libraries, use

```
devsim.get_parameter(name='info')['math_libraries']
```

### 2.10.2 UMFPACK 5.1 Solver

The UMFPACK 5.1 solver is now available as a shared library distributed with the software. It is licensed under the terms of the LGPL 2.1 and our version is hosted here:

[[https://github.com/devsim/umfpack\\_lgpl](https://github.com/devsim/umfpack_lgpl)]([https://github.com/devsim/umfpack\\_lgpl](https://github.com/devsim/umfpack_lgpl))

Please note that this version uses a scheme to provide the needed math library functions when the library is loaded.

In order to use this library, a shim script is provided to load UMFPACK and set it as the solver. Please see this example:

```
python -mdevsim.umfpack.umfshim ssac_cap.py
```

### 2.10.3 Direct Solver Callback

It is now possible to setup call a custom direct solver. The direct solver is called from Python and the callback is implemented by setting these parameters:

```
devsim.set_parameter(name="direct_solver", value="custom")
devsim.set_parameter(name="solver_callback", value=local_solver_callback)
```

Where the first parameter enables the use of the second parameter to set a callback function. Please see the `testing/umfpack_shim.py` for a sample implementation using UMFPACK 5.1.

### 2.10.4 Apple M1

On this platform, the software does not check for floating point exceptions (FPEs) during usage of the direct solver. During testing, it was discovered that FPEs were occurring during factorization for both the SuperLU and the UMFPACK. Removing this check allows more of the tests to run through to completion.

### 2.10.5 Bugs

Fix issue [#104](<https://github.com/devsim/devsim/issues/104>) where the 2D MOSFET example was not fully connected across region interfaces.

```
testing/mos_2d.py
testing/mos_2d_restart.py
testing/mos_2d_restart2.py
```

This was resulting in an FPE during testing on macOS M1.

## 2.11 Version 2.3.8

### 2.11.1 Bugs

[@ryan3141](https://github.com/ryan3141) fixed an issue where math functions added with `devsim.register_function()` (page 114) were not available in extended precision model evaluation. The `testing/testfunc_extended.py` test is added to validate the fix.

Update NOTICE with the license files from the various dependencies.

## 2.12 Version 2.3.7

### 2.12.1 Apple M1 Support

Intel MKL Pardiso not available, so using system BLAS/LAPACK or openblas by default. In addition, SuperLU, is used instead of the MKL Pardiso. This results in some test failures, based on the use of a different solver, and not the OS architecture.

Extended precision is enabled.

Enabled by running `pip install`.

The regression results are in this newly created repo:

- [devsim\_tests\_macos\_arm64](https://github.com/devsim/devsim\_tests\_macos\_arm64)

### 2.12.2 Python Notebook Example With 3D Visualization

A plotting example using `pyvista` is presented in `examples/plotting/visualization.ipynb`. This example was provided by [@simbilod](https://github.com/simbilod).

### 2.12.3 Bugs

When instantiating a mesh from Gmsh, contact and interface related errors to dimensionality have an improved error message.

## 2.13 Version 2.3.6

On Windows the `DEVSIM_MATH_LIBS` now uses the `;` as the path separator, while macOS and Linux still use `:`.

The math library search order is then:

- The math libraries listed in the `DEVSIM_MATH_LIBS` environment variable, with the appropriate separator.
- The Intel Math Kernel Library

- These dynamic libraries \* OpenBLAS (e.g. libopenblas.so) \* LAPACK (e.g. liblapack.so) \* BLAS (e.g. libblas.so)

All platforms will search for the Intel MKL by trying several version numbers. When the Intel MKL is not available, the direct solver will switch from Intel MKL Pardiso to SuperLU.

On macOS and Linux, the RPATH has been modified to look in places relative to the *devsim* module, instead of using CONDA\_PREFIX or VIRTUAL\_ENV.

- macOS : @loader\_path;@loader\_path/../lib;@loader\_path/../../../../../lib;  
@executable\_path/../lib
- Linux : \$ORIGIN:\$ORIGIN/../lib:\$ORIGIN/../../../../../lib

## 2.14 Release 2.3.1

### 2.14.1 Python PIP Package

DEVSIM is now available via pip for macOS, Linux, and Microsoft Windows. To install this package for your platform:

```
pip install devsim
```

Please see the INSTALL.md file in the distribution for more information. These files may be found in the \$CONDA\_PREFIX/devsim\_data directory of your Anaconda environment. If you are using venv, it may be found in the \$VIRTUAL\_ENV/devsim\_data of your virtual environment.

### 2.14.2 Remove Windows MSYS Build

The msys build is removed as an available binary package. Windows is still supported through the use of the Visual C++ compiler build.

### 2.14.3 Build Notes

The compiler for the Linux build are now upgraded to devtoolset-10 and is now built on manylinux2014.

Boost is now added as a submodule, instead of using system libraries or Anaconda Python versions. The Linux build no longer requires Anaconda Python.

## 2.15 Release 2.2.0

### 2.15.1 Device and mesh deletion commands

The `devsim.delete_device()` (page 102) command makes it possible to delete devices so they will no longer be solved in the simulation. Any parameters set on the device are also removed from the system.

The `devsim.delete_mesh()` (page 102) command makes it possible to delete meshes. Once a mesh has been deleted, it is no longer possible to create devices from it using the `devsim.create_device()` (page 100) command.

### 2.15.2 Extended Precision

Extended precision is now available on Windows builds using the Visual Studio Compiler. Note that this precision is not as accurate as the float128 type used on other systems.

### 2.15.3 Direct Solver

SuperLU has been updated from version 4.3 to version 5.3. It is the solver used when the Intel MKL is not available.

### 2.15.4 Code Quality

Fixed defects found in Coverity scanning.

## 2.16 Release 2.1.0

### 2.16.1 Explicit math library loading

Since the Intel Math Kernel Library started versioning the names of their dynamic link libraries, it has been difficult to maintain a proper Anaconda Python environment when the version has been updated. With this release, it is possible to use any recent version of the Intel MKL. In addition, the user is able to load alternative BLAS/LAPACK math libraries.

#### 2.16.1.1 Intel MKL

From DEVSIM Version 2.1.0 onward, a specific version is not required when loading the Intel MKL. If the Intel MKL is not found, the import of the `devsim` module will fail, and an error message will be printed. This method is the default, and should work when using an Anaconda Python environment with the `mk1` package installed.

When using a different Python distribution, or having an installation in a different place, it is possible to specify the location by modifying the `LD_LIBRARY_PATH` environment variable on Linux, or using

DYLD\_LIBRARY\_PATH on Apple macOS. The explicit path may be set to the MKL math libraries may be set using the method in the next section.

### 2.16.1.2 Loading other math libraries

It is possible to load alternative implementations of the BLAS/LAPACK used by the software. The DEVSIM\_MATH\_LIBS environment variable may be used to set a : separated list of libraries. These names may be based on relative or absolute paths. The program will load the libraries in order, and stop when all of the necessary math symbols are supplied. If symbols for the Intel MKL are detected, then the Pardiso direct solver will be enabled.

Linux example:

```
export DEVSIM_MATH_LIBS=libblas.so:liblapack.so
```

Apple macOS example:

```
export DEVSIM_MATH_LIBS=libblas.dylib:liblapack.dylib
```

### 2.16.2 Direct solver selection

The direct solver may be selected by using the `direct_solver` parameter.

```
devsim.set_parameter(name='direct_solver', value='mkl_pardiso')
```

The following options are available:

- `mkl_pardiso` Intel MKL Pardiso
- `superlu` SuperLU 4.3

The default is `mkl_pardiso` when the Intel MKL is loaded. Otherwise, the default will switch to `superlu`.

### 2.16.3 Kahan summation in extended precision mode

The `kahan3` and `kahan4` functions are now using the Kahan summation algorithm for extended precision model evaluation. Previously, this algorithm was replaced with 128-bit floating point addition and subtraction in releases that support extended precision mode. With this change, better than 128-bit floating precision is available when extended precision is enabled.

```
devsim.set_parameter(name = "extended_model", value=True)
```

The `testing/kahan_float128.py` test has been added.

## 2.16.4 Visual Studio 2022

The Microsoft Windows win64 release version is now built using the Visual Studio 2022 compiler. For users needing extended precision on the Windows platform, the msys build is recommended.

## 2.17 Release 2.0.1

### 2.17.1 Update documentation files

The following files were updated in the text documentation distributed with the software.

- CONTRIBUTING.md
- INSTALL.md
- README.md

This was done to create a version to coincide with this paper in the Journal of Open Source Software.

Sanchez, J. E., (2022). DEVSIM: A TCAD Semiconductor Device Simulator. Journal of Open Source Software, 7(70), 3898, <https://doi.org/10.21105/joss.03898>.

### 2.17.2 Update MKL Version

The release version of this software is build against version 2 of the Intel MKL, which corresponds to the latest version of Anaconda Python.

## 2.18 Release 2.0.0

### 2.18.1 New Major Version

Based on the change in the sections *Contact and Interface Equation Commands* (page 12) and *Transient Simulation* (page 13). The major version of the software has been updated to 2. Existing scripts may need to be updated for this change.

### 2.18.2 Contact and Interface Equation Commands

The previously deprecated `variable_name` option is no longer accepted by the `devsim.contact_equation()` (page 89) and `devsim.interface_equation()` (page 92) commands. This has been updated in the documentation.

## 2.18.3 Documentation

### 2.18.3.1 Manual

- Fixed unit in description for example in *1D Capacitor* (page 123).
- Added DOI to referenced papers and updated bibliography style in bibliography.
- Added reference to *Equation and Models* (page 41) with additional information about element assembly.
- Updated *Equation and Models* (page 41) and *1D Capacitor* (page 123) to remove `variable_name` option from `devsim.contact_equation()` (page 89) and `devsim.interface_equation()` (page 92).

### 2.18.3.2 Documentation Files

Some out of date files (e.g. `RELEASE`, `INSTALL`, ...) have been removed. The `README.md` has been updated and the `INSTALL.md` has been added.

## 2.18.4 Python Packages

The `rampbias` function in the `devsim.python_packages.ramp` module has been fixed to properly reduce the bias when there is a convergence failure.

Python 2.7 specific instructions in *User Interface* (page 67) has been removed.

## 2.18.5 Solver

### 2.18.5.1 Transient Simulation

- Fixed bug with `transient_tr` (trapezoidal) time integration method in the `devsim.solve()` (page 118) command where the wrong sign was used to integrate previous time steps.
- Fixed bug in the charge error calculation, which calculates the simulation result with that a forward difference projection.
- Added `testing/transient_rc.py` test which compares simulation with analytic result for RC circuit.
- Added `devsim.set_initial_condition()` (page 117) to set initial transient condition as alternative to using the `transient_dc` option to the `devsim.solve()` (page 118) command. Suitable options for this command may be provided from the `get_matrix_and_rhs()` command.

### **2.18.5.2 Convergence Tests**

The `maximum_error` and `maximum_divergence` options were added to the `devsim.solve()` (page 118) command. If the absolute error of any iteration goes above `maximum_error`, the simulation stops with a convergence failure. The `maximum_divergence` is the maximum number of iterations that the simulator error may increase before stopping.

### **2.18.5.3 Verbosity**

During the `devsim.solve()` (page 118), circuit node and circuit solution information is no longer printed to the screen for the default verbosity level. In addition, the number of equations per device and region is no longer displayed at the start of the first iteration.

### **2.18.5.4 Intel Math Kernel Library**

The Intel Math Kernel Library now uses versioned library names. Binary releases are now updated against the latest versioned dll names from MKL available in the Anaconda Python distribution.

### **2.18.5.5 SuperLU**

The code now supports newer versions of SuperLU. The release version is still using SuperLU 4.3 for the iterative solution method, and the Intel MKL Pardiso for the direct solve method.

### **2.18.5.6 Simulation Matrix**

The `devsim.get_matrix_and_rhs()` (page 117) command was not properly accepting the `format` parameter, and was always returning the same type.

### **2.18.6 Add Interface supporting Periodic Boundary Conditions**

The `devsim.create_interface_from_nodes()` (page 101) command makes it possible to create an interface with non coincident nodes. This enables the use of periodic boundary conditions.

### **2.18.7 Build Scripts**

The build scripts have been updated on all platforms to be less dependent on specific Python 3 versions.

An updated Fedora build script has been added. It uses the system installed SuperLU as the direct solver.

## 2.19 Release 1.6.0

### 2.19.1 Array Type Input and Output

In most circumstances, the software now returns numerical data using the Python array class. This is more efficient than using standard lists, as it encapsulates a contiguous block of memory. More information about this class can be found at <https://docs.python.org/3/library/array.html>. The representation can be easily converted to lists and numpy arrays for efficient manipulation.

When accepting user input involving lists of homogenous data, such as `devsim.set_node_values()` (page 115) the user may enter data using either a list, string of bytes, or the array class. It may also be used to input numpy arrays or any other class with a `tobytes` method.

### 2.19.2 Get Matrix and RHS for External Use

The `devsim.get_matrix_and_rhs()` (page 117) command has been added to assemble the static and dynamic matrices, as well as their right hand sides, based on the current state of the device being simulated. The `format` option is used to specify the sparse matrix format, which may be either in the compressed column or compressed row formats, `csc` or `csr`.

### 2.19.3 Maximum Divergence Count

If the Newton iteration errors keep increasing for 20 iterations in a row, then the simulator stops. This limit was previously 5. This gives a chance for a solution to be found, when there is a poor initial guess.

### 2.19.4 Mesh Visualization Element Orientation

Elements written to the `tecplot` format in 2d and 3d have node orderings compatible with the element connectivity in visualization formats. Specifying the `reorder=True` option in `devsim.get_element_node_list()` (page 93) will result in node ordering compatible with meshing and visualization software.

### 2.19.5 Figure annotation

Fig. 4.2 has been updated, showing the `EdgeNodeVolume`.

## 2.19.6 Citation

The *Citing this Work* (page 1) section has been added with information on how to cite the manual and the simulator.

## 2.19.7 Documentation License

The license terms have been changed in *Documentation License* (page 1) so that derivative works are allowed.

## 2.19.8 Online Forum

The online forum for discussion about the software has moved to <https://forum.devsim.org>. This has been updated in *Contact* (page 1).

## 2.20 Release 1.5.1

### 2.20.1 Installation Script

A new installation script is in the base directory of the package. It provides instructions of completing the installation to the python environment without having to set the PYTHONPATH environment variable. It notifies the user of missing components to finish the installation within an Anaconda or MiniConda environment.

To use the script, use the following command inside of the devsim directory.

```
python install.py
```

The install script will write a file named `lib/setup.py`, which can be used to complete the installation using `pip`. The script provides instructions for the installation and deinstallation of devsim.

```
INFO: Writing setup.py
INFO:
INFO: Please type the following command to install devsim:
INFO: pip install -e lib
INFO:
INFO: To remove the file, type:
INFO: pip uninstall devsim
```

## 2.20.2 Math Functions Table

The list of available math functions, [Table 10.2](#), has been reformatted, and parts have been split into the tables referenced in the next few sections.

## 2.20.3 Error Functions

The following inverse functions and their derivatives are now available in the model interpreter, and also listed in [Table 10.3](#).

- `erf_inv` Inverse Error Function
- `erfc_inv` Inverse Complimentary Error Function
- `derf_invdx` Derivative of Inverse Error Function
- `derfc_invdx` Derivative of Complimentary Inverse Error Function

## 2.20.4 Fermi Integral

The Joyce-Dixon approximation [4] for the Fermi integral and its inverse are now calculated with extended floating point precision, when extended precision is enabled. These functions are now listed in [Table 10.4](#).

- `Fermi` Fermi integral
- `dFermidx` Derivative of Fermi integral
- `InvFermi` Inverse Fermi integral
- `dInvFermidx` Derivative of inverse Fermi Integral

The following examples are available:

- `testing/Fermi1.py` Fermi integral
- `testing/Fermi1_float128.py` Fermi integral in extended floating point precision

## 2.20.5 Gauss-Fermi Integral

The Gauss-Fermi Integral, using Paasch's equations [7] are now available, and are listed in [Table 10.5..](#)

- `gfi` Gauss-Fermi Integral
- `dgfidx` Derivative of Gauss-Fermi Integral
- `igfi` Inverse Gauss-Fermi Integral
- `digfidx` Derivative of Inverse Gauss-Fermi Integral

Each of these functions take two arguments, `zeta` and `s`. The derivatives with respect to the first argument are provided.

The following examples are available:

- `testing/GaussFermi.py` Gauss-Fermi integral

- `testing/GaussFermi.py` Gauss-Fermi integral with extended floating point precision

## 2.21 Release 1.5.0

The `devsim.custom_equation()` (page 89) command has been modified to require a third return value. This boolean value denotes whether the matrix entries should be row permuted or not. For the bulk equations this value should be `True`. For interface and contact boundary conditions, this value should be `False`. More information is available in *Custom Matrix assembly* (page 52).

It is now possible to replace an existing `custom_equation`.

The file `examples/diode/diode_1d_custom.py` demonstrates custom matrix assembly and can be directly compared to `examples/diode/diode_1d.py`.

The `EdgeNodeVolume` model is now available for the volume contained by an edge and is referenced in *Edge models* (page 46).

The `devsim.equation()` (page 90) command has removed support for the `volume_model` option. It has been replaced with:

- `volume_node0_model`
- `volume_node1_model`

This makes it possible to better integrate nodal quantities on the volumes of element edges. For example, a field dependent generation-recombination rate can be volume integrated separately for each node of an element edge.

The `devsim.contact_equation()` (page 89) now supports the following options:

- `edge_volume_model`
- `volume_node0_model`
- `volume_node1_model`

This makes it possible to integrate edge and element edge quantities with respect to the volume on nodes of the edge at the contact. This is similar to `devsim.equation()` (page 90), described in *June 7, 2015* (page 32).

The integration parameters for `edge_volume_model` are set with

- `edge_node0_volume_model` (default `EdgeNodeVolume` *Edge models* (page 46) )
- `edge_node1_volume_model` (default `EdgeNodeVolume`)

and for `volume_model` with:

- `element_node0_volume_model` (default `ElementNodeVolume` *Element edge models defined on each region of a device.* (page 47))
- `element_node1_volume_model` (default `ElementNodeVolume`)

These parameters are applicable to both `devsim.equation()` (page 90) `devsim.contact_equation()` (page 89).

## 2.22 Release 1.4.14

### 2.22.1 Platforms

Windows 32 bit is no longer supported. Binary releases of the Visual Studio 2019 MSYS2/Mingw-w64 64-bit builds are still available online for Microsoft Windows 10.

On Linux, the releases are now on Centos 7, as Centos 6 has reached its end of life on November 30, 2020.

Please see [Supported platforms](#) (page 81) for more information.

For future development, C++17 is now the recommended C++ compiler standard.

## 2.23 Release 1.4.13

The node indexes with the maximum error for each equation will be printed when `debug_level` is verbose.

```
devsim.set_parameter(name="debug_level", value="verbose")
```

These are printed as `RelErrorNode` and `AbsErrorNode`:

```
Region: "gate"      RelError: 5.21531e-14   AbsError: 4.91520e+04
Equation: "ElectronContinuityEquation"  RelError: 4.91520e-16   AbsError: 4.
↪91520e+04
RelErrorNode: 129      AbsErrorNode: 129
```

This information is also returned when using the `info=True` option on the `devsim.solve()` (page 118) command for each equation on each region of a device.

If the `info` flag is set to `True` on the `solve` command, the iteration information will be returned, and an exception for convergence will no longer be thrown. It is the responsibility of the caller to test the result of the `solve` command to see if the simulation converged. Other types of exceptions, such as floating point errors, will still result in a Python exception that needs to be caught.

## 2.24 Release 1.4.12

Element assembly for calculation of current and charges from the device into the circuit equation are fixed. These tests are added:

- `testing/cap_2d_edge.py`
- `testing/cap_2d_element.py`
- `testing/cap_3d_edge.py`
- `testing/cap_3d_element.py`

The `edge` variant is using standard edge based assembly, and the `element` variant is using element-based assembly.

## 2.25 Release 1.4.11

The `devsim.element_pair_from_edge_model()` (page 109) command is available to calculate element edge components averaged onto each node of the element edge. This makes it possible to create an edge weighting scheme different from those used in `devsim.element_from_edge_model()` (page 107). The examples `examples/diode/laux2d.py` (2D) and `examples/diode/laux3d.py` (3D) compare the built-in implementations of these commands with equivalent implementations written in Python

Fixed issue where command option names were not always shown in the documentation.

The platform specific notes now clarify that any version of Python 3 (3.6 or higher) is supported.

- `linux.txt`
- `windows.txt`
- `macos.txt`

## 2.26 Release 1.4.10

Fixed crash when evaluating element edge model in 3D.

Fixed potential error using `devsim.delete_node_model()` (page 105) and similar deletion commands.

## 2.27 Release 1.4.9

Support for loading mesh files containing element edge data.

## 2.28 Release 1.4.8

In transient mode, the convergence test was flawed so that the `charge_error` was the only convergence check required for convergence. The software now ensures all convergence criteria are met.

## 2.29 Release 1.4.7

### 2.29.1 Models

In the simple physics models, the sign for time-derivative terms was wrong for the electron and hole continuity equations. This affects small-signal and noise simulations. The example at `examples/diode/ssac_diode.py` was updated to reflect the change.

## 2.29.2 Platforms

Fix build script issue for Apple macOS on Travis CI, updated the compiler to g++-9.

Update Centos 6 build from devtoolset-6 to devtoolset-8.

## 2.30 Release 1.4.6

### 2.30.1 Version Information

Parameter info can be queried for getting version information. The file `testing/info.py` contains an example.

```
python info.py
{'copyright': 'Copyright © 2009-2020 DEVSIM LLC', 'direct_solver': 'mkl_pardiso',
  ↳ 'extended_precision': True, 'license': 'Apache License, Version 2.0', 'version
  ↳ ': '1.4.6', 'website': 'https://devsim.org'}
```

### 2.30.2 Extended Precision

The example `examples/diode/gmsh_diode3d_float128.py` provides an example where extended precision is enabled.

### 2.30.3 Python Formatting

The Python scripts in the `examples` and `testing` directories have been reformatted to be more consistent with language standards.

### 2.30.4 Platforms

Microsoft Windows 10 is supported and is now compiled using Microsoft Visual Studio 2019.

Microsoft Windows 7 is no longer supported, as Microsoft has dropped support as of January 14, 2020.

### 2.30.5 External Meshing

Support for reading meshes from Genius Device Simulator has been completely removed from DEVSIM.

## 2.31 Release 1.4.5

An MSYS2/Mingw-w64 build is available for 64-bit Microsoft Windows. This build, labeled `devsim_msys_v1.4.5`, enables the use of the 128-bit floating point precision already available on the Apple macOS and Linux platforms.

## 2.32 Release 1.4.4

### 2.32.1 Bug Fixes

An intermittent crash on Microsoft Windows 10 was occurring at the end of the program. It is now fixed.

### 2.32.2 Documentation

A file named `CHANGES.md` is now distributed with DEVSIM, detailing changes to the program.

### 2.32.3 Internal changes

- Regression system script refactored to Python
- Refactored threading code using C++11 function
- Refactored timing functions for verbose mode using C++11 functions
- Refactored FPE detection code to C++11 standard

## 2.33 Release 1.4.3

Fix failures with the following commands:

- `devsim.delete_edge_model()` (page 104)
- `devsim.delete_element_model()` (page 105)
- `devsim.delete_interface_model()` (page 105)
- `devsim.delete_node_model()` (page 105)

## 2.34 Release 1.4.2

In this release there are the following improvements.

- Errors due to floating point exceptions and failed matrix factorization are not fatal.
- The Apple macOS release fixes runtime issues with macOS 10.13 (High Sierra).
- The provided binary releases utilize more libraries from Anaconda.

## 2.35 Release 1.4.1

### 2.35.1 Math Functions

The `cosh`, `sinh`, `tanh`, are now available math functions. Please see [Table 10.2](#). In addition, all of the functions in the table, except for Fermi and inverse Fermi functions, are evaluate in extended precision mode. This mode may be enabled using the parameters discussed in [Extended Precision](#) (page 28).

### 2.35.2 Element Model Memory Leak

A large memory leak was occurring during the evaluation of element edge models created with `devsim.element_from_edge_model()` (page 107). It is now fixed and memory usage is now stable when these models are evaluated.

### 2.35.3 Python 3 API Memory Leak

A small memory leak could occur when `devsim` (page 87) functions where called, or when data was returned. These reference counting issues are now fixed.

## 2.36 Release 1.4.0

The `devsim.custom_equation()` (page 89) and `devsim.register_function()` (page 114) commands take Python functions, instead of the a string with the function name.

The following commands are available to store data on edges and element edges:

- `devsim.edge_solution()` (page 107)
- `devsim.set_edge_values()` (page 114)
- `devsim.element_solution()` (page 111)
- `devsim.set_element_values()` (page 115)

## 2.37 Release 1.3.0

### 2.37.1 Python 3 Examples

All of the Tcl regression tests in the `testing` directory have been converted to Python 3. These tests serve as examples for features that were previously only tested using Tcl scripting.

### 2.37.2 Tcl Support Deprecated

Tcl support is deprecated and will be removed in a future release of the software.

### 2.37.3 Binary Releases

#### 2.37.3.1 Scripting Languages

Python 3 is now the only scripting language in the releases available from:

<https://github.com/devsim/devsim/releases>

#### 2.37.3.2 Math Library

The Microsoft Windows version now uses Intel MKL Pardiso for direct matrix factorization. Both Linux and Apple macOS have been using Intel MKL Pardiso since *November 1, 2015* (page 30). Binary releases for all operating systems use BLAS/LAPACK routines from Intel Math Kernel Library.

## 2.38 Release 1.2.0

DEVSIM releases have better support for Python 3. Using the stable ABI, the software is able to run newer Python 3 releases, without rebuilding the software.

Support for Python 2.7 has been removed.

The banner has been removed when the DEVSIM module is imported.

The `symdiff` python module is now part of the DEVSIM release. This module has additional features not available using the `devsim.symdiff()` (page 116) command from DEVSIM. By first setting the `PYTHONPATH` variable to the `lib` directory in the DEVSIM distribution, `symdiff` is loaded by using

```
import symdiff
```

Documentation is available in the `doc` directory of this distribution. Examples are available in the `examples/symdiff` directory.

## 2.39 Release 1.1.0

The Bernoulli function,  $B(x)$ ,

$$B(x) = \frac{x}{e^x - 1}$$

and its derivative,

$$dBdx(x) = \frac{e^x - 1 - xe^x}{(e^x - 1)^2}$$

have been refactored. They are used to calculate electron and hole current densities using the Scharfetter-Gummel method [10].

The Bernoulli function has numerical issues when  $x$  approaches 0 and requires special evaluation. In this release, DEVSIM, takes advantage of C++11 math library functions for evaluating the denominator.

In addition, these functions are evaluated with extended precision, when this mode is enabled in the simulator. This mode is described in *Extended Precision* (page 28) and controlling parameters are in *Parameters controlling program behavior*. (page 56).

Users should expect that simulation results should change in the number of solver iterations and small differences in simulation results. This and other functions are listed in *Predefined Functions* (page 73).

## 2.40 Release 1.0.0

### 2.40.1 Documentation

The formatting of the PDF and online documentation has been improved. Also significant changes have been made to the way DEVSIM is called from Python.

### 2.40.2 Version

Due to the numerous changes in the Python API, the version number has been updated to having a major revision of 1. We adopt the semantic version numbering presented at <https://semver.org>. The version number can be accessed through the Python interface using the `devsim.__version__` variable.

### 2.40.3 Operating Systems

The Microsoft Windows 32-bit operating system is now supported in addition to the platforms listed in *Supported platforms* (page 81).

## 2.40.4 Python Support

DEVSIM is now loaded as a shared library from any compatible Python interpreter. Previously, DEVSIM binaries contained an embedded Python interpreter. The following versions of Python are supported in this release

- 2.7
- 3.6
- 3.7

By first setting the PYTHONPATH variable to the lib directory in the DEVSIM distribution, devsim is loaded by using

```
import devsim
```

from Python. Previous releases of devsim used the ds module, the manual will be updated to reflect the change in module name.

Many of the examples in the distribution rely on the python\_packages module, which is available by using:

```
import devsim.python_packages
```

The default version of Python for use in scripts is Python 3.7. Scripts written for earlier versions of Python 3 should work. Python 2.7 is deprecated for future development.

Anaconda Python 3.7 is the recommended distribution and is available from <https://continuum.io>. The Intel Math Kernel Library is required for the official DEVSIM releases. These may be installed in Anaconda using the following command:

```
conda install mkl
```

On the Microsoft Windows platform, the following packages should also be installed:

```
conda install sqlite zlib
```

Some of the examples and tests also use numpy, which is available using:

```
conda install numpy
```

Please see *User Interface* (page 67) and *Installation* (page 81) for more information.

### 2.40.5 GMSH Support

Gmsh has announced a new version of their mesh format 4.0. DEVSIM currently supports the previous version, 2.2. To load a file from Gmsh, it is now necessary to either:

- Save the file in the 2.2 format from Gmsh
- Parse the 4.0 file, and then use *Custom mesh loading using scripting* (page 64)

A future release of DEVSIM will provide this capability.

### 2.40.6 CGNS Support

Support for loading CGNS files is deprecated, and is no longer part of the official releases. Please see *Using an external mesher* (page 63) for more information about importing meshes from other tools.

## 2.41 July 20, 2018

### 2.41.1 Documentation

The documentation has a new license, which is described in *Copyright* (page 1). The source files are now available for download from: [https://github.com/devsim/devsim\\_documentation](https://github.com/devsim/devsim_documentation).

### 2.41.2 Python 3 Support

Python 3 executable, `devsim_py3` is now supplied in addition to standard Python 2 executable, `devsim`.

### 2.41.3 Element Information

The `devsim.get_element_node_list()` (page 93) retrieves a list of nodes for every element on a region, contact, or interface.

### 2.41.4 Interface Boundary Condition

The `type=hybrid` option is now available for the `devsim.interface_equation()` (page 92) command. Please see *Interface equation assembly* (page 50) for information about boundary conditions.

### 2.41.5 Interface Equation Coupling

The `name0`, and `name1` options are now available for the `devsim.interface_equation()` (page 92) command. They make it possible to couple dissimilar equation names across regions.

### 2.41.6 Interface and Contact Surface Area

Contact surface area is no longer included in `SurfaceArea` node model. It is now placed in `ContactSurfaceArea`. These are listed in [Table 4.1](#).

### 2.41.7 Bug Fixes

- The `devsim.interface_equation()` (page 92) command is fixed for `type=fluxterm` boundary conditions on the interface.
- The `devsim.get_material()` (page 95), and `devsim.set_material()` (page 96) handle the `contact` option.
- Interface equation assembly skips nodes when an interface node is shared with a contact.

### 2.41.8 Extended Precision

The following new parameters are available:

- `extended_solver`, extended precision matrix for Newton and linear solver
- `extended_model`, extended precision model evaluation
- `extended_equation`, extended precision equation assembly

When compiled with 128-bit extended precision support, these options enable calculations to be performed with higher precision. Default geometric models, are also calculated with extended precision.

```
devsim.set_parameter(name = "extended_solver", value=True)
devsim.set_parameter(name = "extended_model", value=True)
devsim.set_parameter(name = "extended_equation", value=True)
```

Currently, the Linux and gcc-based Apple macOS versions have extended precision support.

## 2.42 May 15, 2017

### 2.42.1 Platforms

- The Ubuntu 16.04 (LTS) platform is now supported.
- The Ubuntu 12.04 (LTS), Centos 5 (Red Hat 5 compatible) platforms are no longer supported. These platforms are no longer supported by their vendors.

- Apple macOS compiled with `flat_namespace` to allow substitution of dynamically linked libraries.
- Microsoft Windows 7 is compiled using Microsoft Visual Studio 2017.

### 2.42.2 Binary Releases

- Releases available from <https://github.com/devsim/devsim/releases>.
- Centos 6 released is linked against the Intel Math Kernel Library.
- Microsoft Windows 7 release is linked against the Intel Math Kernel Library
- Apple macOS can optionally use the Intel Math Kernel Library.
- Anaconda Python 2.7 is the recommended distribution.
- Please see release notes for more information.

### 2.42.3 Bug Fixes

- 3D element edge derivatives were not being evaluated correctly
- 3D equation model evaluation for element edge models

### 2.42.4 Enhancements

- Build scripts are provided to build on various platforms.
- DEVSIM mesh format stores elements, instead of just nodes, for contact and interfaces
- The `devsim.create_gmsh_mesh()` (page 100) command can be used to create a device from a provided list of elements.

### 2.42.5 Example Availability

- BJT simulation example available from [https://github.com/devsim/devsim\\_bjt\\_example](https://github.com/devsim/devsim_bjt_example).

## 2.43 February 6, 2016

DEVSIM is now covered by the Apache License, Version 2.0 [11]. Please see the NOTICE and LICENSE file for more information.

## 2.44 November 24, 2015

### 2.44.1 Python Help

The Python interpreter now has documentation for each command, derived from the documentation in the manual. For example, help for the `devsim.solve()` (page 118) can be found using:

```
help("devsim.solve")
```

### 2.44.2 Manual Updates

The manual has been updated so that commands are easier to find in the index. Every command now has a short description. Cross references have been fixed. The date has been added to the front page.

## 2.45 November 1, 2015

### 2.45.1 Convergence Info

The `devsim.solve()` (page 118) now supports the `info` option. The solve command will then return convergence information.

### 2.45.2 Python Interpreter Changes

The way DEVSIM commands are loaded into the `devsim` module has been changed. It is now possible to see the full list of DEVSIM commands by typing

```
help('devsim')
```

in the Python interpreter.

### 2.45.3 Platform Improvements and Binary Availability

Many improvements have been made in the way binaries are generated for the Linux, Apple macOS, and Microsoft Windows platforms.

For Linux (see `linux.txt`):

- Create Centos 5, (Red Hat Enterprise Linux 5 compatible) build
- Build uses Intel Math Kernel Library math libraries (community edition)
- Build uses any compatible Python 2.7, including Anaconda
- Build compatible with newer Linux distributions.

For Apple macOS (see `macos.txt`):

- Uses the system Python 2.7 on macOS 10.10 (Yosemite)
- Provide instructions to use Anaconda Python

For Microsoft Windows (see `windows.txt`):

- Uses any compatible Python 2.7, including Anaconda
- Build uses Intel Math Kernel Library Community Edition

Binary releases are available for these platforms at <https://devsim.org>.

## 2.46 September 6, 2015

The `devsim.set_node_values()` (page 115) takes a new option, `values`. It is a list containing values to set for all of the nodes in a region.

The following new commands have been added:

- `devsim.get_equation_list()` (page 92)
- `devsim.get_contact_equation_list()` (page 91)
- `devsim.get_interface_equation_list()` (page 92)
- `devsim.delete_equation()` (page 90)
- `devsim.delete_contact_equation()` (page 90)
- `devsim.delete_interface_equation()` (page 90)
- `devsim.get_equation_command()` (page 92)
- `devsim.get_contact_equation_command()` (page 91)
- `devsim.get_interface_equation_command()` (page 92)

## 2.47 August 10, 2015

The `devsim.create_contact_from_interface()` (page 100) may be used to create a contact at the location of an interface. This is useful when contact boundary conditions are needed for a region connected to the interface.

## 2.48 July 16, 2015

The `devsim.set_node_value()` (page 115) was not properly setting the value. This issue is now resolved.

## 2.49 June 7, 2015

The `devsim.equation()` (page 90) now supports the `edge_volume_model`. This makes it possible to integrate edge quantities properly so that it is integrated with respect to the volume on nodes of the edge. To set the node volumes for integration, it is necessary to define a model for the node volumes on both nodes of the edge. For example:

```
devsim.edge_model(device="device", region="region", name="EdgeNodeVolume",  
    equation="0.5*EdgeCouple*EdgeLength")  
set_parameter(name="edge_node0_volume_model", value="EdgeNodeVolume")  
set_parameter(name="edge_node1_volume_model", value="EdgeNodeVolume")
```

For the cylindrical coordinate system in 2D, please see *Cylindrical Coordinate Systems* (page 53).

macOS 10.10 (Yosemite) is now supported. Regression results in the source distribution are for a 2014 Macbook Pro i7 running this operating system.

## 2.50 October 4, 2014

### 2.50.1 Platform Availability

The software is now supported on the Microsoft Windows. Please see *Supported platforms* (page 81) for more information.

## 2.51 December 25, 2013

### 2.51.1 Binary Availability

Binary versions of the DEVSIM software are available for download from <http://sourceforge.net/projects/devsim>. Current versions available are for

- macOS 10.10 (Yosemite)
- Red Hat Enterprise Linux 6
- Ubuntu 12.04 (LTS)

Please see *Installation* (page 81) for more information.

### 2.51.2 Platforms

macOS 10.10 (Yosemite) is now supported. Support for 32 bit is no longer supported on this platform, since the operating system is only released as 64 bit.

Regression data will no longer be maintained in the source code repository for 32 bit versions of Ubuntu 12.04 (LTS) and Red Hat Enterprise Linux 6. Building and running on these platforms will still be supported.

### 2.51.3 Source code improvements

The source code has been improved to compile on macOS 10.10 (Yosemite) and to comply with C++11 language standards. Some of the structure of the project has been reorganized. These changes to the infrastructure will help to keep the program maintainable and useable into the future.

## 2.52 September 8, 2013

### 2.52.1 Convergence

If the simulation is diverging for 5 or more iterations, the simulation stops.

### 2.52.2 Bernoulli Function Derivative Evaluation

The dBdx math function has been improved to reduce overflow.

### 2.52.3 Default Edge Model

The edge\_index is now a default edge models created on a region [Table 4.2](#).

## 2.53 August 14, 2013

### 2.53.1 SYMDIFF functions

The vec\_max and vec\_min functions have been added to the SYMDIFF parser ([Table 10.2](#)). The vec\_sum function replaces sum.

### 2.53.2 Default Node Models

The `coordinate_index` and `node_index` are now part of the default node models created on a region (Table 4.1}).

### 2.53.3 Set Node Value

It is now possible to use the `devsim.set_node_value()` (page 115) to set a uniform value or indexed value on a node model.

### 2.53.4 Fix Edge Average Model

Fixed issue with `devsim.edge_average_model()` (page 105) during serialization to the DEVSIM format.

## 2.54 July 29, 2013

### 2.54.1 DEVSIM is open source

DEVSIM is now an open source project and is available from <https://github.com/devsim/devsim>. License information may be found in *DEVSIM License* (page 83). If you would like to participate in this project or need support, please contact us using the information in *Contact* (page 1). Installation instructions may be found in *Installation* (page 81).

### 2.54.2 Build

The Tcl interpreter version of DEVSIM is now called `devsim_tcl`, and is located in `/src/main/` of the build directory. Please see the `INSTALL` file for more information.

### 2.54.3 Contact Material

Contacts now require a material setting (e.g. `metal`). This is for informational purposes. Contact models still look up parameter values based on the region they are located.

### 2.54.4 External Meshing

Please see *Using an external mesher* (page 63) for more information about importing meshes from other tools.

**Genius Mesh Import** DEVSIM can now read meshes written from Genius Device Simulator. *Support is no longer available in recent versions releases.*

**Gmsh Mesh Import** DEVSIM reads version 2.1 and 2.2 meshes from Gmsh. Version 2.0 is no longer supported. Please see *Gmsh* (page 63) for more information.

### 2.54.5 Math Functions

The `acosh`, `asinh`, `atanh`, are now available math functions. Please see [Table 10.2](#).

### 2.54.6 Test directory structure

Platform specific results are stored in a hierarchical fashion.



## Chapter 3

# Introduction

### 3.1 Overview

DEVSIM is a technology computer-aided design (TCAD) software for semiconductor device simulation. While geared toward this application, it may be used where the control volume approach is appropriate for solving systems of partial-differential equations (PDE's) on a static mesh. After introducing DEVSIM, the rest of the manual discusses the key components of the system, and instructions for their use.

DEVSIM is available from <https://devsim.org>. The source code is available under the terms of the Apache License Version 2.0 [11]. Examples are released under the Apache License Version 2.0 [11]. Contributions to this project are welcome in the form of bug reporting, documentation, modeling, and feature implementation.

### 3.2 Goals

The primary goal of DEVSIM is to give the user as much flexibility and control as possible. In this regard, few models are coded into the program binary. They are implemented in human-readable scripts that can be modified if necessary.

DEVSIM has a scripting language interface (*User Interface* (page 67)). This provides control structures and language syntax in a consistent and intuitive manner. The user is provided an environment where they can implement new models on their own. This is without requiring extensive vendor support or use of compiled programming languages.

SYMDIFF (*SYMDIFF* (page 71)) is the symbolic expression parser used to allow the formulation of device equations in terms of models and parameters. Using symbolic differentiation, the required partial derivatives can be generated, or provided by the user. DEVSIM then assembles these equations over the mesh.

### 3.3 Structures

**Devices** A device refers to a discrete structure being simulated. It is composed of the following types of objects.

**Regions** A region defines a portion of the device of a specific material. Each region has its own system of equations being solved.

**Interfaces** An interface connects two regions together. At the interfaces, equations are specified to account for how the flux in each device region crosses the region boundary.

**Contacts** A contact specifies the boundary conditions required for device simulation. It also specifies how terminal currents are integrated into an external circuit.

### 3.4 Equation assembly

Equation assembly of models is discussed in *Equation and Models* (page 41).

### 3.5 Parameters

Parameters may be specified globally, or for a specific device or region. Alternatively, parameters may be based on the material type of the regions. Usage is discussed in *Parameters* (page 55).

### 3.6 Circuits

Circuit boundary conditions allow multi-device simulation. They are also required for setting sources and their response for AC and noise analysis. Circuit elements, such as voltage sources, current sources, resistors, capacitors, and inductors may be specified. This is further discussed in *Circuits* (page 59).

### 3.7 Meshing

Meshing is discussed in *Meshing* (page 61).

### 3.8 Analysis

DEVSIM offers a range of simulation algorithms. They are discussed in more detail in *Solver* (page 65).

**DC** The DC operating point analysis is useful for performing steady-state simulation for a different bias conditions.

**AC** At each DC operating point, a small-signal AC analysis may be performed. An AC source is provided through a circuit and the response is then simulated. This is useful for both quasi-static capacitance simulation, as well as RF simulation.

**Noise/Sensitivity** Noise analysis may be used to evaluate how internal noise sources are observed in the terminal currents of the device or circuit. Using this method, it is also possible to simulate how the device response changes when device parameters are changed.

**Transient** DEVSIM is able to simulate the nonlinear transient behavior of devices, when the bias conditions change with time.

## 3.9 Scripting interface

The scripting interface to DEVSIM is discussed in *User Interface* (page 67).

## 3.10 Expression parser

The expression parser is discussed in *SYMDIFF* (page 71).

## 3.11 Visualization and postprocessing

Visualization is discussed in *Visualization* (page 79).

## 3.12 Installation

Installation is discussed in *Installation* (page 81).

## 3.13 Additional information

Additional information is discussed in *Additional Information* (page 83).

## 3.14 Examples

Examples are discussed in the remaining chapters beginning with *Example Overview* (page 119).



## Chapter 4

# Equation and Models

### 4.1 Overview

DEVSIM uses the control volume approach for assembling partial-differential equations (PDE's) on the simulation mesh. DEVSIM is used to solve equations of the form:

$$\frac{\partial X}{\partial t} + \nabla \cdot \vec{Y} + Z = 0$$

Internally, it transforms the PDE's into an integral form.

$$\int \frac{\partial X}{\partial t} \partial r + \int \vec{Y} \cdot \partial s + \int Z \partial r = 0$$

Equations involving the divergence operators are converted into surface integrals, while other components are integrated over the device volume.

Additional detail concerning the discussion that follows is available in [8, 9].

In [Fig. 4.1](#), 2D mesh elements are depicted. The shaded area around the center node is referred to as the node volume, and it is used for the volume integration. The lines from the center node to other nodes are referred to as edges. The flux through the edge are integrated with respect to the perpendicular bisectors (dashed lines) crossing each triangle edge.

In this form, we refer to a model integrated over the edges of triangles as edge models. Models integrated over the volume of each triangle vertex are referred to as node models. Element edge models are a special case where variables at other nodes off the edge may cause the flux to change.

There are a default set of models created in each region upon initialization of a device, and are typically based on the geometrical attributes. These are described in the following sections. Models required for describing the device behavior are created using the equation parser described in [SYMDIFF](#) (page 71). For special situations, custom matrix assembly is also available and is discussed in [Custom Matrix assembly](#) (page 52).

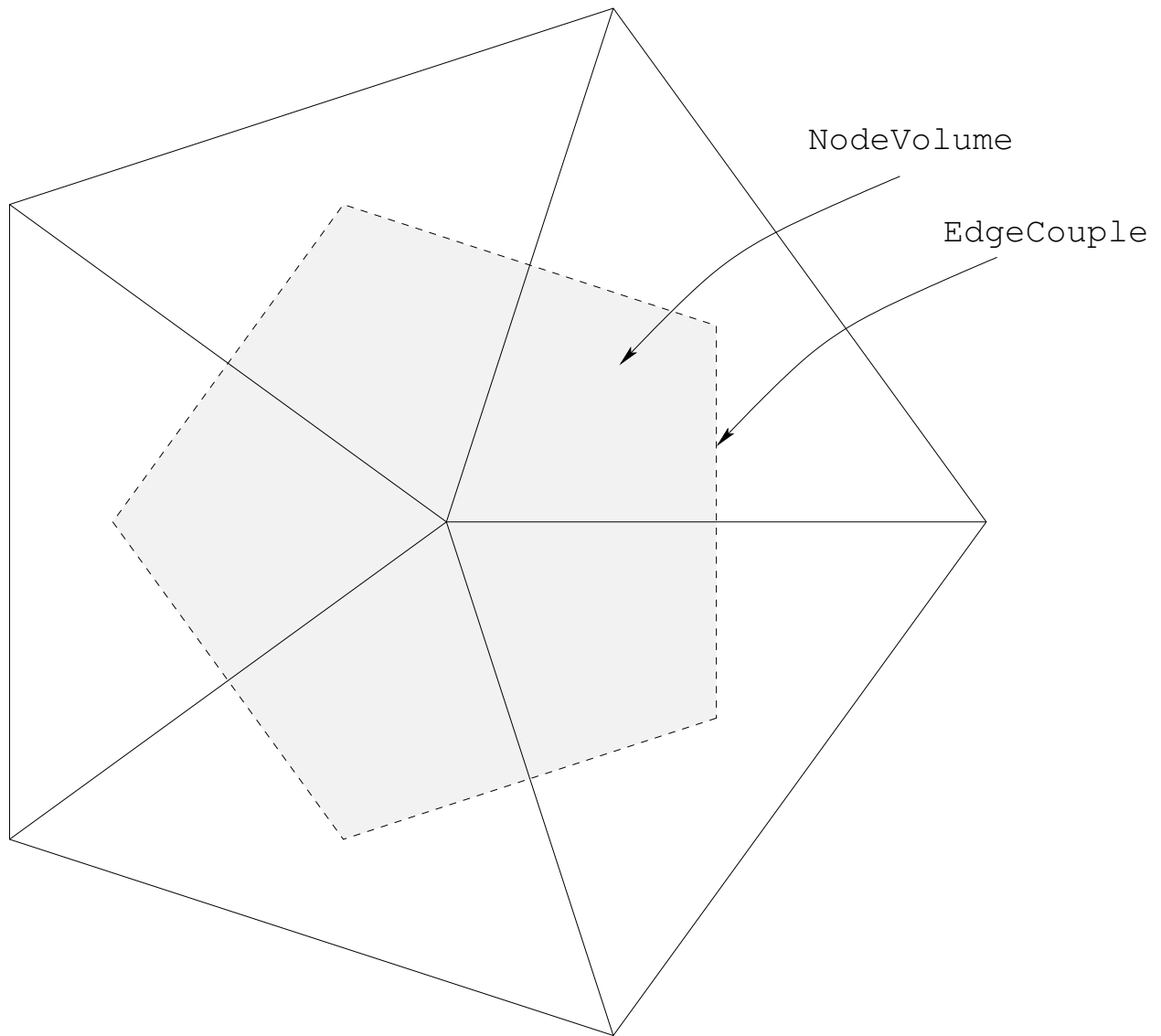


Fig. 4.1: Mesh elements in 2D.

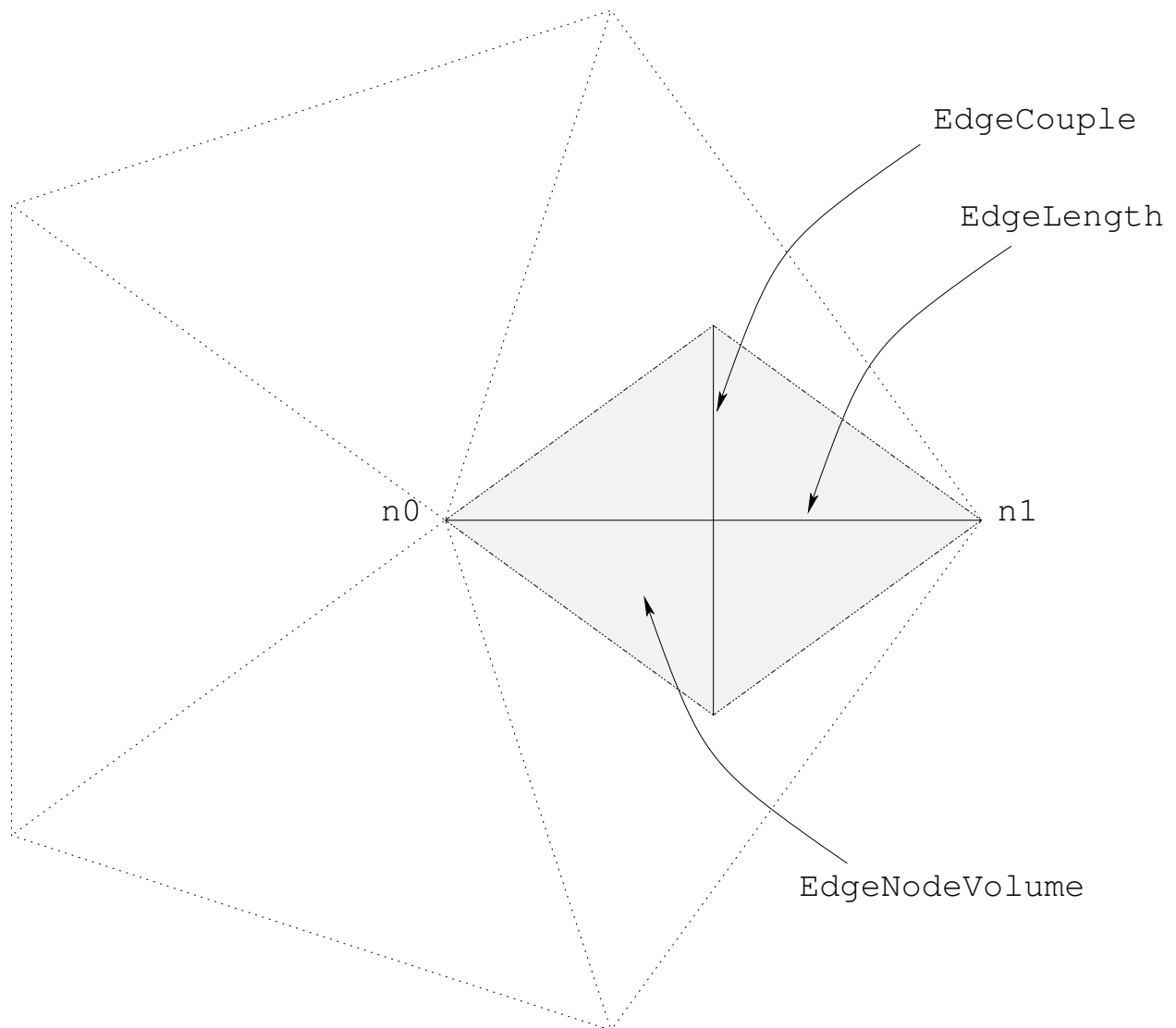


Fig. 4.2: Edge model constructs in 2D.

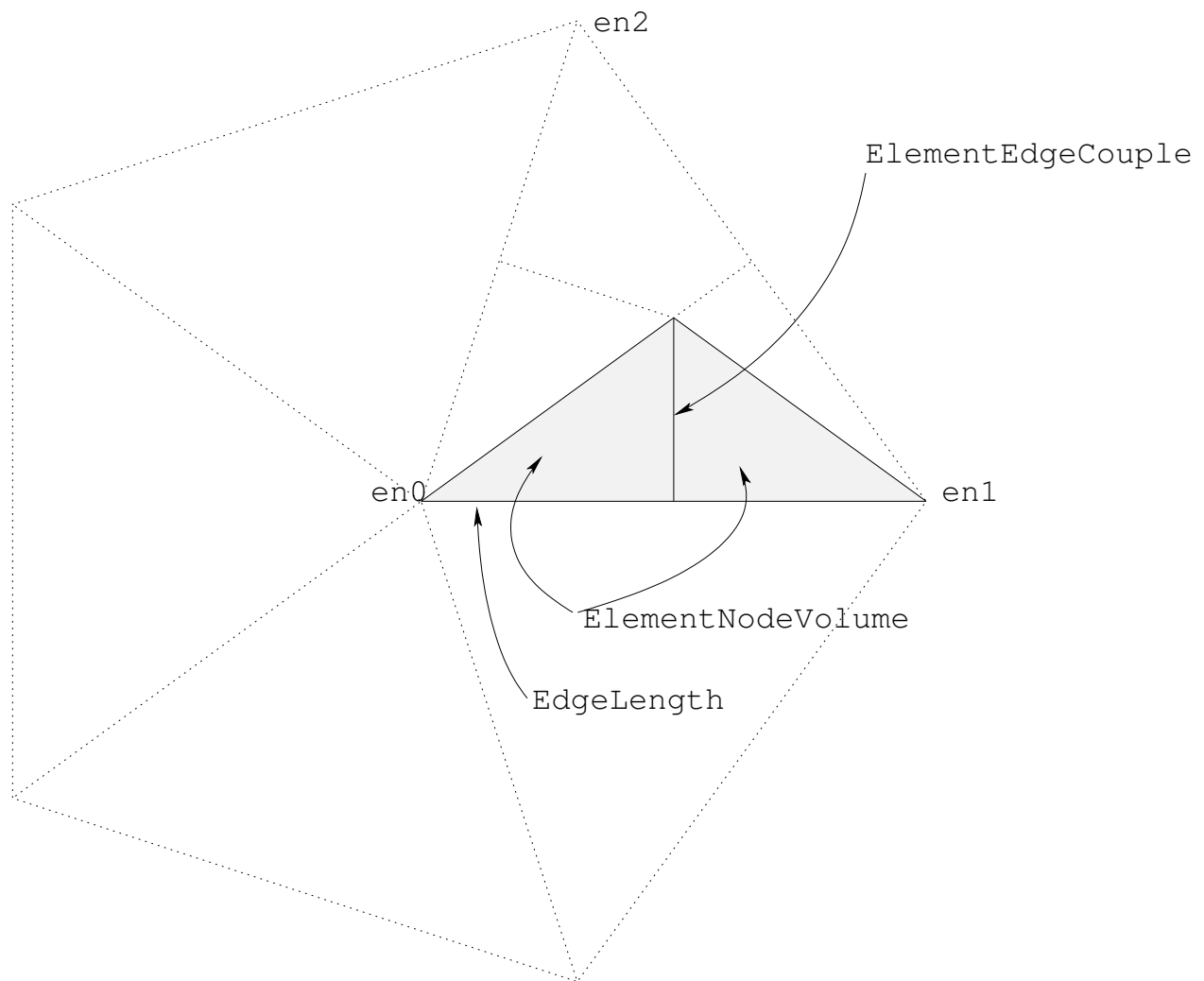


Fig. 4.3: Element edge model constructs in 2D.

## 4.2 Bulk models

### 4.2.1 Node models

Node models may be specified in terms of other node models, mathematical functions, and parameters on the device. The simplest model is the node solution, and it represents the solution variables being solved for. Node models automatically created for a region are listed in [Table 4.1](#).

In this example, we present an implementation of Shockley Read Hall recombination [5].

```
USRH="-ElectronCharge*(Electrons*Holes - n_i^2)/(taup*(Electrons + n1) \
      + taun*(Holes + p1))"
dUSRHdn="simplify(diff(%s, Electrons))" % USRH
dUSRHdp="simplify(diff(%s, Holes))" % USRH
devsim.node_model(device='MyDevice', region='MyRegion',
  name="USRH", equation=USRH)
devsim.node_model(device='MyDevice', region='MyRegion',
  name="USRH:Electrons", equation=dUSRHdn)
devsim.node_model(device='MyDevice', region='MyRegion',
  name="USRH:Holes", equation=dUSRHdp)
```

The first model specified, USRH, is the recombination model itself. The derivatives with respect to electrons and holes are USRH:Electrons and USRH:Holes, respectively. In this particular example Electrons and Holes have already been defined as solution variables. The remaining variables in the equation have already been specified as parameters.

The `diff` function tells the equation parser to take the derivative of the original expression, with respect to the variable specified as the second argument. During equation assembly, these derivatives are required in order to converge upon a solution. The `simplify` function tells the expression parser to attempt to simplify the expression as much as possible.

Table 4.1: Node models defined on each region of a device.

Node Model	Description
AtContactNode	Evaluates to 1 if node is a contact node, otherwise 0
NodeVolume	The volume of the node. Used for volume integration of node models on nodes in mesh
NSurfaceNormal_x	The surface normal to points on the interface or contact (2D and 3D)
NSurfaceNormal_y	The surface normal to points on the interface or contact (2D and 3D)
NSurfaceNormal_z	The surface normal to points on the interface or contact (3D)
SurfaceArea	The surface area of a node on interface nodes, otherwise 0
ContactSurfaceArea	The surface area of a node on contact nodes, otherwise 0
coordinate_index	Coordinate index of the node on the device
node_index	Index of the node in the region
x	x position of the node
y	y position of the node
z	z position of the node

## 4.2.2 Edge models

Edge models may be specified in terms of other edge models, mathematical functions, and parameters on the device. In addition, edge models may reference node models defined on the ends of the edge. As depicted in Fig. 4.2, edge models are with respect to the two nodes on the edge,  $n0$  and  $n1$ .

For example, to calculate the electric field on the edges in the region, the following scheme is employed:

```
devsim.edge_model(device="device", region="region", name="ElectricField",
    equation="(Potential@n0 - Potential@n1)*EdgeInverseLength")
devsim.edge_model(device="device", region="region",
    name="ElectricField:Potential@n0", equation="EdgeInverseLength")
devsim.edge_model(device="device", region="region",
    name="ElectricField:Potential@n1", equation="-EdgeInverseLength")
```

In this example, `EdgeInverseLength` is a built-in model for the inverse length between nodes on an edge. `Potential@n0` and `Potential@n1` is the `Potential` node solution on the nodes at the end of the edge. These edge quantities are created using the `devsim.edge_from_node_model()` (page 106). In addition, the `devsim.edge_average_model()` (page 105) can be used to create edge models in terms of node model quantities.

Edge models automatically created for a region are listed in Table 4.2.

Table 4.2: Edge models defined on each region of a device.

Edge Model	Description
EdgeCouple	The length of the perpendicular bisector of an element edge. Used to perform surface integration of edge models on edges in mesh.
EdgeNodeVolume	The volume for each node on an edge. Used to perform volume integration of edge models on edges in mesh.
EdgeInverseLength	Inverse of the EdgeLength.
EdgeLength	The distance between the two nodes of an edge
edge_index	Index of the edge on the region
unitx	x component of the unit vector along an edge
unity	y component of the unit vector along an edge (2D and 3D)
unitz	z component of the unit vector along an edge (3D only)

## 4.2.3 Element edge models

Element edge models are used when the edge quantities cannot be specified entirely in terms of the quantities on both nodes of the edge, such as when the carrier mobility is dependent on the normal electric field. In 2D, element edge models are evaluated on each triangle edge. As depicted in Fig. 4.3, edge models are with respect to the three nodes on each triangle edge and are denoted as  $en0$ ,  $en1$ , and  $en2$ . Derivatives are with respect to each node on the triangle.

In 3D, element edge models are evaluated on each tetrahedron edge. Derivatives are with respect to the nodes on both triangles on the tetrahedron edge. Element edge models automatically created for a region are listed in Table 4.3.

As an alternative to treating integrating the element edge model with respect to `ElementEdgeCouple`, the integration may be performed with respect to `ElementNodeVolume`. See [devsim.equation\(\)](#) (page 90) for more information.

Table 4.3: Element edge models defined on each region of a device.

Element Edge Model	Description
<code>ElementEdgeCouple</code>	The length of the perpendicular bisector of an edge. Used to perform surface integration of element edge model on element edge in the mesh.
<code>ElementNodeVolume</code>	The node volume at either end of each element edge.

## 4.2.4 Model derivatives

To converge upon the solution, derivatives are required with respect to each of the solution variables in the system. DEVSIM will look for the required derivatives. For a model `model`, the derivatives with respect to solution variable `variable` are presented in [Table 4.4](#).

Table 4.4: Required derivatives for equation assembly. `model` is the name of the model being evaluated, and `variable` is one of the solution variables being solved at each node.

Model Type	Derivatives Required
Node Model	<code>model:variable</code>
Edge Model	<code>model:variable@n0</code> , <code>model:variable@n1</code>
Element Edge Model	<code>model:variable@en0</code> , <code>model:variable@en1</code> , <code>model:variable@en2</code> , <code>model:variable@en3</code> (3D)

## 4.2.5 Conversions between model types

The [devsim.edge\\_from\\_node\\_model\(\)](#) (page 106) is used to create edge models referring to the nodes connecting the edge. For example, the edge models `Potential@n0` and `Potential@n1` refer to the `Potential` node model on each end of the edge.

The [devsim.edge\\_average\\_model\(\)](#) (page 105) creates an edge model which is either the arithmetic mean, geometric mean, gradient, or negative of the gradient of the node model on each edge.

When an edge model is referred to in an element edge model expression, the edge values are implicitly converted into element edge values during expression evaluation. In addition, derivatives of the edge model with respect to the nodes of an element edge are required, they are converted as well. For example, `edgemodel:variable@n0` and `edgemodel:variable@n1` are implicitly converted to `edgemodel:variable@en0` and `edgemodel:variable@en1`, respectively.

The [devsim.element\\_from\\_edge\\_model\(\)](#) (page 107) is used to create directional components of an edge model over an entire element. The `derivative` option is used with this command to create the derivatives with respect to a specific node model. The [devsim.element\\_from\\_node\\_model\(\)](#) (page 108) is used to create element edge models referring to each node on the element of the element edge.

## 4.2.6 Equation assembly

Bulk equations are specified in terms of the node, edge, and element edge models using the `devsim.equation()` (page 90). Node models are integrated with respect to the node volume. Edge models are integrated with the perpendicular bisectors along the edge onto the nodes on either end.

Element edge models are treated as flux terms and are integrated with respect to `ElementEdgeCouple` using the `element_model` option. Alternatively, they may be treated as source terms and are integrated with respect to `ElementNodeVolume` using the `volume_node0_model` and `volume_node1_model` option.

In this example, we are specifying the Potential Equation in the region to consist of a flux term named `PotentialEdgeFlux` and to not have any node volume terms.

```
devsim.equation(device="device", region="region", name="PotentialEquation",
  variable_name="Potential", edge_model="PotentialEdgeFlux",
  variable_update="log_damp" )
```

In addition, the solution variable coupled with this equation is `Potential` and it will be updated using logarithmic damping.

Table 4.5: Required derivatives for interface equation assembly. The node model name `nodemodel` and its derivatives `nodemodel:variable` are suffixed with `@r0` and `@r1` to denote which region on the interface is being referred to.

Model Type	Model Name	Derivatives Required
Node Model (region 0)	<code>nodemodel@r0</code>	<code>nodemodel:variable@r0</code>
Node Model (region 1)	<code>nodemodel@r1</code>	<code>nodemodel:variable@r1</code>
Interface Node Model	<code>inodemodel</code>	<code>inodemodel:variable@r0</code> , <code>inodemodel:variable@r1</code>

## 4.3 Interface

### 4.3.1 Interface models

Fig. 4.4 depicts an interface in DEVSIM. It is a collection of overlapping nodes existing in two regions, `r0` and `r1`.

Interface models are node models specific to the interface being considered. They are unique from bulk node models, in the sense that they may refer to node models on both sides of the interface. They are specified using the `devsim.interface_model()` (page 113). Interface models may refer to node models or parameters on either side of the interface using the syntax `nodemodel@r0` and `nodemodel@r1` to refer to the node model in the first and second regions of the interface. The naming convention for node models, interface node models, and their derivatives are shown in Table 4.5.

```
devsim.interface_model(device="device", interface="interface",
  name="continuousPotential", equation="Potential@r0-Potential@r1")
```

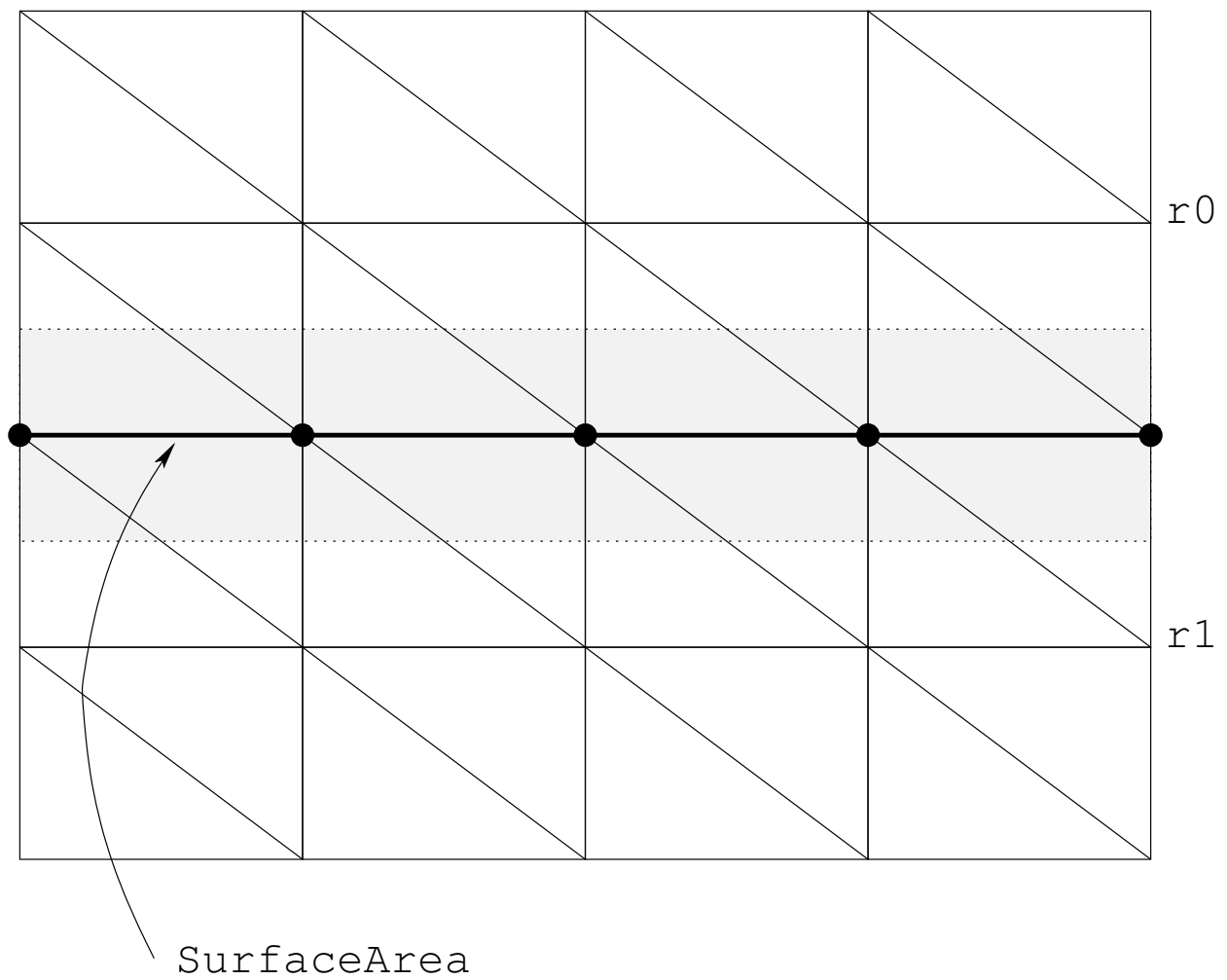


Fig. 4.4: Interface constructs in 2D. Interface node pairs are located at each  $\bullet$ . The SurfaceArea model is used to integrate flux term models.

### 4.3.2 Interface model derivatives

For a given interface model, `model`, the derivatives with respect to the variable `variable` in the regions are

- `model:variable@r0`
- `model:variable@r1`

```
devsim.interface_model(device="device", interface="interface",  
    name="continuousPotential:Potential@r0", equation="1")  
devsim.interface_model(device="device", interface="interface",  
    name="continuousPotential:Potential@r1", equation="-1")
```

### 4.3.3 Interface equation assembly

There are three types of interface equations considered in DEVSIM. They are both activated using the `devsim.interface_equation()` (page 92).

In the first form, `continuous`, the equations for the nodes on both sides of the interface are integrated with respect to their volumes and added into the same equation. An additional equation is then specified to relate the variables on both sides. In this example, continuity in the potential solution across the interface is enforced, using the `continuousPotential` model defined in the previous section.

```
devsim.interface_equation(device="device", interface="interface", name=  
    ↪ "PotentialEquation",  
    interface_model="continuousPotential", type="continuous")
```

In the second form, `fluxterm`, a flux term is integrated over the surface area of the interface and added to the first region, and subtracted from the second.

In the third form, `hybrid`, equations for nodes on both sides of the interface are added into the equation for the node in the first region. The equation for the node on the second interface is integrated in the second region, and the `fluxterm` is subtracted in the second region.

## 4.4 Contact

### 4.4.1 Contact models

Fig. 4.5 depicts how a contact is treated in a simulation. It is a collection of nodes on a region. During assembly, the specified models form an equation, which replaces the equation applied to these nodes for a bulk node.

Contact models are equivalent to node and edge models, and are specified using the `devsim.contact_node_model()` (page 103) and the `devsim.contact_edge_model()` (page 102), respectively. The key difference is that the models are only evaluated on the contact nodes for the contact specified.

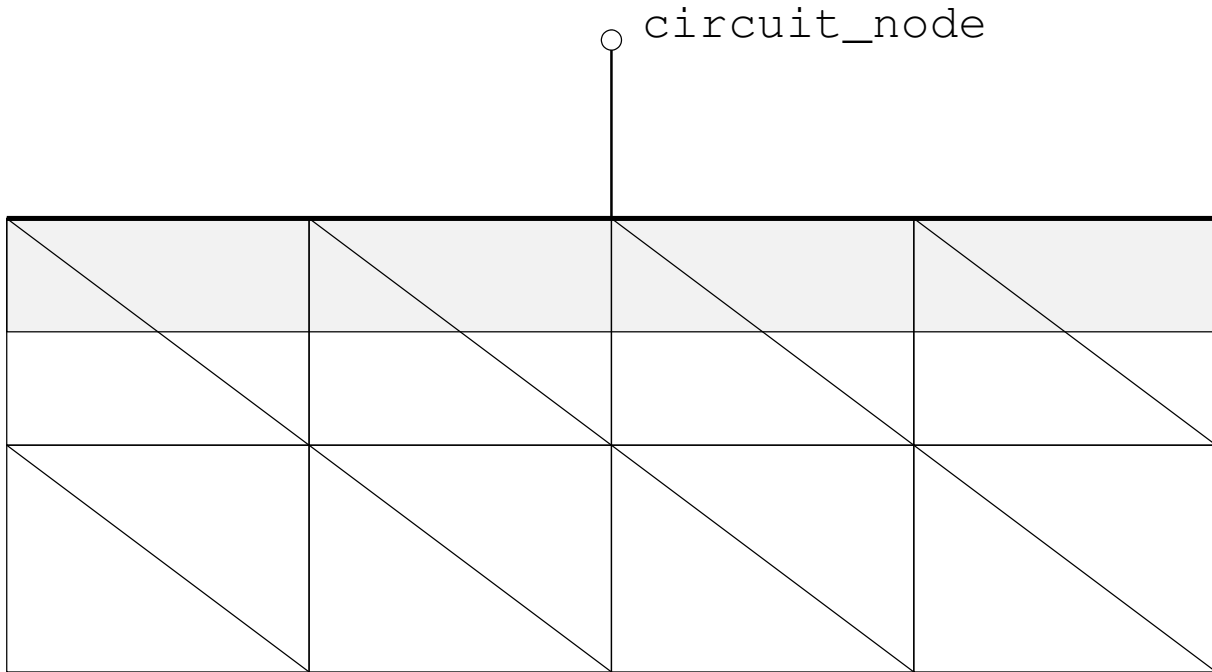


Fig. 4.5: Contact constructs in 2D.

#### 4.4.2 Contact model derivatives

The derivatives are equivalent to the discussion in *Model derivatives* (page 47). If external circuit boundary conditions are being used, the model model derivative with respect to the circuit node node name should be specified as `model:node`.

#### 4.4.3 Contact equation assembly

The `devsim.contact_equation()` (page 89) is used to specify the boundary conditions on the contact nodes. The models specified replace the models specified for bulk equations of the same name. For example, the node model specified for the contact equation is assembled on the contact nodes, instead of the node model specified for the bulk equation. Contact equation models not specified are not assembled, even if the model exists on the bulk equation for the region attached to the contact.

As an example

```
devsim.contact_equation(device="device", contact="contact", name=
    ↪ "PotentialEquation",
    node_model="contact_bc", edge_charge_model="DField")
```

Current models refer to the instantaneous current flowing into the device. Charge models refer to the instantaneous charge at the contact.

During a transient, small-signal or ac simulation, the time derivative is taken so that the net current into a

circuit node is

$$I(t) = i(t) + \frac{\partial q(t)}{\partial t}$$

where  $i$  is the integrated current and  $q$  is the integrated charge.

## 4.5 Custom Matrix assembly

The `devsim.custom_equation()` (page 89) command is used to register callbacks to be called during matrix and right hand side assembly. The Python procedure should expect to receive two arguments and return two lists and a boolean value. For example a procedure named `myassemble` registered with

```
devsim.custom_equation(name="test1", procedure="myassemble")
```

expects two arguments

```
def myassemble(what, timemode):
    .
    .
    .
    return rcv, rv, True
```

where `what` may be passed as one of

MATRIXONLY  
RHS  
MATRIXANDRHS

and `timemode` may be passed as one of

DC  
TIME

When `timemode` is DC, the time-independent part of the equation is returned. When `timemode` is TIME, the time-derivative part of the equation is returned. The simulator will scale the time-derivative terms with the proper frequency or time scale.

The return value from the procedure must return two lists and a boolean value of the form

```
[1 1 1.0 2 2 1.0 1 2 -1.0 2 1 -1.0 2 2 1.0], [1 1.0 2 1.0 2 -1.0], True
```

where the length of the first list is divisible by 3 and contains the row, column, and value to be assembled into the matrix. The second list is divisible by 2 and contains the right hand side entries. Either list may be empty.

The boolean value denotes whether the matrix and right hand side entries should be row permuted. A value of `True` should be used for assembling bulk equations, and a value of `False` should be used for assembling contact and interface boundary conditions.

The `devsim.get_circuit_equation_number()` (page 88) may be used to get the equation numbers corresponding to circuit node names. The `devsim.get_equation_numbers()` (page 92) may be used to find the equation number corresponding to each node index in a region.

The matrix and right hand side entries should be scaled by the NodeVolume if they are assembled into locations in a device region as volume integration.

## 4.6 Cylindrical Coordinate Systems

In 2D, models representing the edge couples, surface areas and node volumes may be generated using the following commands:

- `devsim.cylindrical_edge_couple()` (page 103)
- `devsim.cylindrical_node_volume()` (page 103)
- `devsim.cylindrical_surface_area()` (page 104)

In order to change the integration from the default models to cylindrical models, the following parameters may be set

```
set_parameter(name="node_volume_model",
  value="CylindricalNodeVolume")
set_parameter(name="edge_couple_model",
  value="CylindricalEdgeCouple")
set_parameter(name="edge_node0_volume_model",
  value="CylindricalEdgeNodeVolume@n0")
set_parameter(name="edge_node1_volume_model",
  value="CylindricalEdgeNodeVolume@n1")
set_parameter(name="element_edge_couple_model",
  value="ElementCylindricalEdgeCouple")
set_parameter(name="element_node0_volume_model",
  value="ElementCylindricalNodeVolume@en0")
set_parameter(name="element_node1_volume_model",
  value="ElementCylindricalNodeVolume@en1")
```



## Chapter 5

# Parameters

Parameters can be set using the commands in *Material Commands* (page 94). There are two complementary formalisms for doing this.

### 5.1 Parameters

Parameters are set globally, on devices, or on regions of a device. The models on each device region are automatically updated whenever parameters change.

```
devsim.set_parameter(device="device", region="region",  
    name="ThermalVoltage", value=0.0259)
```

They may also be used to control program behavior, as listed in [Table 5.1](#):

Table 5.1: Parameters controlling program behavior.

Parameter	Description
debug_level	info, verbose <a href="#">Section 9.3.5</a>
threads_available	value=1, <a href="#">Section 9.3.6</a>
threads_task_size	value=?, <a href="#">Section 9.3.6</a>
node_volume_model	<a href="#">Section 4.6</a>
edge_couple_model	<a href="#">Section 4.6</a>
edge_node0_volume_model	<a href="#">Section 4.6</a>
edge_node1_volume_model	<a href="#">Section 4.6</a>
element_edge_couple_model	<a href="#">Section 4.6</a>
element_node0_volume_model	<a href="#">Section 4.6</a>
element_node1_volume_model	<a href="#">Section 4.6</a>
extended_solver	value=False Extended precision matrix and RHS assembly and error evaluations. Linear solver and circuit assembly is still double precision``
extended_model	value=False Extended precision model evaluation
extended_equation	value=False Extended precision equation evaluation
surface_area_model	Model for integration of flux and hybrid interfaces.

## 5.2 Environment Variables

Environment variables to control program behavior are listed in [Table 5.2](#):. Please consult [Section 2](#): for the most up to information concerning their usage.

Table 5.2: Environment controlling program behavior.

Environment Variable	Description
DEVSIM_MATH_LIBS	List of BLAS/LAPACK libraries to load instead of system defaults
DEVSIM_NEW_SYMBOLIC	When set, do a new symbolic matrix factorization during direct solve iterations

## 5.3 Material database entries

Alternatively, parameters may be set based on material types. A database file is used for getting values on the regions of the device.

```
devsim.create_db(filename="foodb")
devsim.add_db_entry(material="global", parameter="q", value=1.60217646e-19,
    unit="coul", description="Electron Charge")
devsim.add_db_entry(material="Si", parameter="one",
```

(continues on next page)

(continued from previous page)

```
value=1, unit="", description="")
devsim.close_db
```

When a database entry is not available for a specific material, the parameter will be looked up on the global material entry.

## 5.4 Discussion

Both parameters and material database entries may be used in model expressions. Parameters have precedence in this situation. If a parameter is not found, then DEVSIM will also look for a circuit node by the name used in the model expression.



## Chapter 6

# Circuits

### 6.1 Circuit elements

Circuit elements are manipulated using the commands in *Circuit Commands* (page 87). Using the `devsim.circuit_element()` (page 87) to add a circuit element will implicitly create the nodes being references.

A simple resistor divider with a voltage source would be specified as:

```
devsim.circuit_element(name="V1", n1="1", n2="0", value=1.0)
devsim.circuit_element(name="R1", n1="1", n2="2", value=5.0)
devsim.circuit_element(name="R2", n1="2", n2="0", value=5.0)
```

Circuit nodes are created automatically when referred to by these commands. Voltage sources create an additional circuit node of the form `V1.I` to account for the current flowing through it.

### 6.2 Connecting devices

For devices to contribute current to an external circuit, the `devsim.contact_equation()` (page 89) should use the `circuitnode` option to specify the circuit node in which to integrate its current. This option does not create a node in the circuit. No circuit boundary condition for the contact equation will exist if the circuit node does not actually exist in the circuit. The `devsim.circuit_node_alias()` (page 88) may be used to associate the name specified on the contact equation to an existing circuit node on the circuit.

The circuit node names may be used in any model expression on the regions and interfaces. However, the simulator will only take derivatives with respect to circuit nodes names on models used to compose the contact equation.



## Chapter 7

# Meshing

### 7.1 1D mesher

DEVSIM has an internal 1D mesher and the proper sequence of commands follow in this example.

```
devsim.create_1d_mesh(mesh="cap")
devsim.add_1d_mesh_line(mesh="cap", pos=0, ps=0.1, tag="top")
devsim.add_1d_mesh_line(mesh="cap", pos=0.5, ps=0.1, tag="mid")
devsim.add_1d_mesh_line(mesh="cap", pos=1, ps=0.1, tag="bot")
devsim.add_1d_contact(mesh="cap", name="top", tag="top", material="metal")
devsim.add_1d_contact(mesh="cap", name="bot", tag="bot", material="metal")
devsim.add_1d_interface(mesh="cap", name="MySiOx", tag="mid")
devsim.add_1d_region(mesh="cap", material="Si", region="MySiRegion",
    tag1="top", tag2="mid")
devsim.add_1d_region(mesh="cap", material="Ox", region="MyOxRegion",
    tag1="mid", tag2="bot")
devsim.finalize_mesh(mesh="cap")
devsim.create_device(mesh="cap", device="device")
```

The `devsim.create_1d_mesh()` (page 100) is first used to initialize the specification of a new mesh by the name specified with the `command` option. The `devsim.add_1d_mesh_line()` (page 97) is used to specify the end points of the 1D structure, as well as the location of points where the spacing changes. The `command` is used to create reference labels used for specifying the contacts, interfaces and regions.

The `devsim.add_1d_contact()` (page 97), `devsim.add_1d_interface()` (page 97) and `devsim.add_1d_region()` (page 97) are used to specify the contacts, interfaces and regions for the device.

Once the meshing commands have been completed, the `devsim.finalize_mesh()` (page 102) is called to create a mesh structure and then `devsim.create_device()` (page 100) is used to create a device using the mesh.

## 7.2 2D mesher

Similar to the 1D mesher, the 2D mesher uses a sequence of non-terminating mesh lines are specified in both the x and y directions to specify a mesh structure. As opposed to using tags, the regions are specified using `devsim.add_2d_region()` (page 99) as box coordinates on the mesh coordinates. The contacts and interfaces are specified using boxes, however it is best to ensure the the interfaces and contacts encompass only one line of points.

```
devsim.create_2d_mesh(mesh="cap")
devsim.add_2d_mesh_line(mesh="cap", dir="y", pos=-0.001, ps=0.001)
devsim.add_2d_mesh_line(mesh="cap", dir="x", pos=xmin, ps=0.1)
devsim.add_2d_mesh_line(mesh="cap", dir="x", pos=xmax, ps=0.1)
devsim.add_2d_mesh_line(mesh="cap", dir="y", pos=ymin, ps=0.1)
devsim.add_2d_mesh_line(mesh="cap", dir="y", pos=ymax, ps=0.1)
devsim.add_2d_mesh_line(mesh="cap", dir="y", pos=+1.001, ps=0.001)
devsim.add_2d_region(mesh="cap", material="gas", region="gas1", yl=-.001, yh=0.0)
devsim.add_2d_region(mesh="cap", material="gas", region="gas2", yl=1.0, yh=1.001)
devsim.add_2d_region(mesh="cap", material="Oxide", region="r0", xl=xmin, xh=xmax,
    yl=ymin, yh=ymin)
devsim.add_2d_region(mesh="cap", material="Silicon", region="r1", xl=xmin, ↵
    ↵xh=xmax,
    yl=ymin, yh=ymin)
devsim.add_2d_region(mesh="cap", material="Silicon", region="r2", xl=xmin, ↵
    ↵xh=xmax,
    yl=ymin, yh=ymin)

devsim.add_2d_interface(mesh="cap", name="i0", region0="r0", region1="r1")
devsim.add_2d_interface(mesh="cap", name="i1", region0="r1", region1="r2",
    xl=0, xh=1, yl=ymin, yh=ymin, bloat=1.0e-10)
devsim.add_2d_contact(mesh="cap", name="top", region="r0", yl=ymin, yh=ymin,
    bloat=1.0e-10, material="metal")
devsim.add_2d_contact(mesh="cap", name="bot", region="r2", yl=ymax, yh=ymax,
    bloat=1.0e-10, material="metal")
devsim.finalize_mesh(mesh="cap")
devsim.create_device(mesh="cap", device="device")
```

In the current implementation of the software, it is necessary to create a region on both sides of the contact in order to create a contact using `devsim.add_2d_contact()` (page 97) or an interface using `devsim.add_2d_interface()` (page 98).

Once the meshing commands have been completed, the `devsim.finalize_mesh()` (page 102) is called to create a mesh structure and then `devsim.create_device()` (page 100) is used to create a device using the mesh.

## 7.3 Using an external mesher

DEVSIM supports reading meshes from Gmsh. In addition, meshes may be input directly using the Python interface. These meshes may only contain points, lines, triangles, and tetrahedra. Hybrid meshes or uniform meshes containing other elements are not supported at this time.

### 7.3.1 Gmsh

The Gmsh meshing software (see *Gmsh* (page 83)) can be used to create a 1D, 2D, or 3D mesh suitable for use in DEVSIM. When creating the mesh file using the software, use physical group names to map the difference entities in the resulting mesh file to a group name. In this example, a MOS structure is read in:

```
devsim.create_gmsh_mesh(file="gmsh_mos2d.msh", mesh="mos2d")
devsim.add_gmsh_region(mesh="mos2d" gmsh_name="bulk", region="bulk",
    material="Silicon")
devsim.add_gmsh_region(mesh="mos2d" gmsh_name="oxide", region="oxide",
    material="Silicon")
devsim.add_gmsh_region(mesh="mos2d" gmsh_name="gate", region="gate",
    material="Silicon")
devsim.add_gmsh_contact(mesh="mos2d" gmsh_name="drain_contact", region="bulk",
    name="drain", material="metal")
devsim.add_gmsh_contact(mesh="mos2d" gmsh_name="source_contact", region="bulk",
    name="source", material="metal")
devsim.add_gmsh_contact(mesh="mos2d" gmsh_name="body_contact", region="bulk",
    name="body", material="metal")
devsim.add_gmsh_contact(mesh="mos2d" gmsh_name="gate_contact", region="gate",
    name="gate", material="metal")
devsim.add_gmsh_interface(mesh="mos2d" gmsh_name="gate_oxide_interface",
    region0="gate", region1="oxide", name="gate_oxide")
devsim.add_gmsh_interface(mesh="mos2d" gmsh_name="bulk_oxide_interface",
    region0="bulk", region1="oxide", name="bulk_oxide")
devsim.finalize_mesh(mesh="mos2d")
devsim.create_device(mesh="mos2d", device="mos2d")
```

Once the meshing commands have been completed, the *devsim.finalize\_mesh()* (page 102) is called to create a mesh structure and then *devsim.create\_device()* (page 100) is used to create a device using the mesh.

### 7.3.2 Custom mesh loading using scripting

It is also possible to arbitrarily load a mesh from a Python using the `devsim.create_gmsh_mesh()` (page 100). This is explained in the Notes section of the command.

## 7.4 Loading and saving results

The `devsim.write_devices()` (page 102) is used to create an ASCII file suitable for saving data for restarting the simulation later. The `devsim` format encodes structural information, as well as the commands necessary for generating the models and equations used in the simulation. The `devsim_data` format is used for storing numerical information for use in other programs for analysis. The `devsim.load_devices()` (page 102) is then used to reload the device data for restarting the simulation.

# Chapter 8

## Solver

### 8.1 Solver

DEVSIM uses Newton methods to solve the system of PDE's. All of the analyses are performed using the `devsim.solve()` (page 118).

### 8.2 DC analysis

A DC analysis is performed using the `devsim.solve()` (page 118).

```
solve(type="dc", absolute_error=1.0e10, relative_error=1e-7 maximum_  
↪ iterations=30)
```

### 8.3 AC analysis

An AC analysis is performed using the `devsim.solve()` (page 118). A circuit voltage source is required to set the AC source.

### 8.4 Noise/Sensitivity analysis

An noise analysis is performed using the `devsim.solve()` (page 118) command. A circuit node is specified in order to find its sensitivity to changes in the bulk quantities of each device. If the circuit node is named V1.I. A noise simulation is performed using:

```
solve(type="noise", frequency=1e5, output_node="V1.I")
```

Noise and sensitivity analysis is performed using the `devsim.solve()` (page 118). If the equation begin solved is PotentialEquation, the names of the scalar impedance field is then:

- V1.I\_PotentialEquation\_real

- `V1.I_PotentialEquation_imag`

and the vector impedance fields evaluated on the nodes are

- `V1.I_PotentialEquation_real_gradx`
- `V1.I_PotentialEquation_imag_gradx`
- `V1.I_PotentialEquation_real_grady` (2D and 3D)
- `V1.I_PotentialEquation_imag_grady` (2D and 3D)
- `V1.I_PotentialEquation_real_gradz` (3D only)
- `V1.I_PotentialEquation_imag_gradz` (3D only)

## 8.5 Transient analysis

Transient analysis is performed using the `devsim.solve()` (page 118). DEVSIM supports time-integration of the device PDE's. The three methods are supported are:

- BDF1
- TRBDF
- BDF2

## Chapter 9

# User Interface

### 9.1 Starting DEVSIM

Refer to *Installation* (page 81) for instructions on how to install DEVSIM. Once installed, DEVSIM may be invoked using the following command

It is necessary to first PYTHONPATH variable to the lib directory in the DEVSIM distribution. As an alternative, an experimental installation script is available to make the process easier. Please see *Installation Script* (page 16) for more information.

devsim is loaded by calling

```
import devsim
```

from Python.

Many of the examples in the distribution rely on the python\_packages module, which is available by using:

```
import devsim.python_packages
```

The supported versions of Python for use in scripts is 3.6 or higher.

### 9.2 Python Language

#### 9.2.1 Introduction

Python is the scripting language employed as the text interface to DEVSIM. Documentation and tutorials for the language are available from [1]. A paper discussing the general benefits of using scripting languages may be found in [6].

### 9.2.2 DEVSIM commands

All of commands are in the `devsim` namespace. In order to invoke a command, the command should be prefixed with `devsim.`, or the following may be placed at the beginning of the script:

```
from devsim import *
```

For details concerning error handling, please see [Error handling](#) (page 68).

### 9.2.3 Advanced usage

In this manual, more advanced usage of the Python language may be used. The reader is encouraged to use a suitable reference to clarify the proper use of the scripting language constructs, such as control structures.

### 9.2.4 Unicode Support

Internally, DEVSIM uses UTF-8 encoding, and expects model equations and saved mesh files to be written using this encoding. Users are encouraged to use the standard ASCII character set if they do not wish to use this feature. Python 3 interpreters handle UTF-8 encoding well.

On some systems, such as Microsoft Windows, it may be necessary to set the following environment variable before running a script containing UTF-8 characters.

```
SET PYTHONIOENCODING=utf-8
```

Care should be taken when using UTF-8 characters in names for visualization using the tools in [Visualization](#) (page 79), as this character set may not be supported.

## 9.3 Error handling

### 9.3.1 Python errors

When a syntax error occurs in a Python script an exception may be thrown. If it is uncaught, then DEVSIM will terminate. More details may be found in an appropriate reference. An exception that is thrown by DEVSIM is of the type `devsim.error`. It may be caught.

### 9.3.2 Fatal errors

When DEVSIM enters a state in which it may not recover. The interpreter should throw a Python exception with a message `DEVSIM FATAL`. At this point DEVSIM may enter an inconsistent state, so it is suggested not to attempt to continue script execution if this occurs.

In rare situations, the program may behave in an erratic manner, print a message, such as `UNEXPECTED` or terminate abruptly. Please report this using the contact information in [Contact](#) (page 1).

### 9.3.3 Floating point exceptions

During model evaluation, DEVSIM will attempt to detect floating point issues and return an error with some diagnostic information printed to the screen, such as the symbolic expression being evaluated. Floating point errors may be characterized as invalid, division by zero, and numerical overflow. This is considered to be a fatal error.

### 9.3.4 Solver errors

When using the `devsim.solve()` (page 118), the solver may not converge and a message will be printed and an exception may be thrown. The solution will be restored to its previous value before the simulation began. This exception may be caught and the bias conditions may be changed so the simulation may be continued. For example:

```
try:
    solve(type="dc", absolute_error=abs_error,
          relative_error=rel_error, maximum_iterations=max_iter)
except devsim.error as msg:
    if msg[0].find("Convergence failure") != 0:
        raise
    ##### put code to modify step here.
```

### 9.3.5 Verbosity

The `set_parameter()` may be used to set the verbosity globally, per device, or per region. Setting the `debug_level` parameter to `info` results in the default level of information to the screen. Setting this option to `verbose` or any other name results in more information to the screen which may be useful for debugging.

The following example sets the default level of debugging for the entire simulation, except that the gate region will have additional debugging information.

```
devsim.set_parameter(name="debug_level", value="info")
devsim.set_parameter(device="device" region="gate",
                     name="debug_level", value="verbose")
```

### 9.3.6 Parallelization

Routines for the evaluating of models have been parallelized. In order to select the number of threads to use

```
devsim.set_parameter(name="threads_available", value=2)
```

where the value specified is the number of threads to be used. By default, DEVSIM does not use threading. For regions with a small number of elements, the time for switching threads is more than the time to evaluate in a single thread. To set the minimum number of elements for a calculation, set the following parameter.

```
devsim.set_parameter(name="threads_task_size", value=1024)
```

The Intel Math Kernel Library is parallelized, the number of thread may be controlled by setting the MKL\_NUM\_THREADS environment variable.

# Chapter 10

## SYMDIFF

### 10.1 Overview

SYMDIFF is a tool capable of evaluating derivatives of symbolic expressions. Using a natural syntax, it is possible to manipulate symbolic equations in order to aid derivation of equations for a variety of applications. It has been tailored for use within DEVSIM.

### 10.2 Syntax

#### 10.2.1 Variables and numbers

Variables and numbers are the basic building blocks for expressions. A variable is defined as any sequence of characters beginning with a letter and followed by letters, integer digits, and the `_` character. Note that the letters are case sensitive so that `a` and `{A}` are not the same variable. Any other characters are considered to be either mathematical operators or invalid, even if there is no space between the character and the rest of the variable name.

Examples of valid variable names are:

`a`, `dog`, `var1`, `var_2`

Numbers can be integer or floating point. Scientific notation is accepted as a valid syntax. For example:

`1.0`, `1.0e-2`, `3.4E-4`

## 10.2.2 Basic expressions

Table 10.1: Basic expressions involving unary, binary, and logical operators.

Expression	Description
(exp1)	Parenthesis for changing precedence
+exp1	Unary Plus
-exp1	Unary Minus
!exp1	Logical Not
exp1 ^ exp2	Exponentiation
exp1 * exp2	Multiplication
exp1 / exp2	Division
exp1 + exp2	Addition
exp1 - exp2	Subtraction
exp1 < exp2	Test Less
exp1 <= exp2	Test Less Equal
exp1 > exp2	Test Greater
exp1 >= exp2	Test Greater Equal
exp1 == exp2	Test Equality
exp1 != exp2	Test Inequality
exp1 && exp2	Logical And
exp1    exp2	Logical Or
variable	Independent Variable
number	Integer or decimal number

In Table 10.1, the basic syntax for the language is presented. An expression may be composed of variables and numbers tied together with mathematical operations. Order of operations is from bottom to top in order of increasing precedence. Operators with the same level of precedence are contained within horizontal lines.

In the expression  $a + b * c$ , the multiplication will be performed before the addition. In order to override this precedence, parenthesis may be used. For example, in  $(a + b) * c$ , the addition operation is performed before the multiplication.

The logical operators are based on non zero values being true and zero values being false. The test operators are evaluate the numerical values and result in 0 for false and 1 for true.

*It is important to note since values are based on double precision arithmetic, testing for equality with values other than 0.0 may yield unexpected results.*

## 10.2.3 Functions

Table 10.2: Predefined Functions

Function	Description
acosh(exp1)	Inverse Hyperbolic Cosine
asinh(exp1)	Inverse Hyperbolic Sine
atanh(exp1)	Inverse Hyperbolic Tangent
cosh(exp1)	Hyperbolic Cosine
sinh(exp1)	Hyperbolic Sine
tanh(exp1)	Hyperbolic Tangent
B(exp1)	Bernoulli Function
dBdx(exp1)	derivative of Bernoulli function
dot2d(exp1x, exp1y, exp2x, exp2y)	$\text{exp1x} \cdot \text{exp2x} + \text{exp1y} \cdot \text{exp2y}$
exp(exp1)	exponent
ifelse(test, exp1, exp2)	if test is true, then evaluate exp1, otherwise exp2
if(test, exp)	if test is true, then evaluate exp, otherwise 0
log(exp1)	natural log
max(exp1, exp2)	maximum of the two arguments
min(exp1, exp2)	minimum of the two arguments
pow(exp1, exp2)	take exp1 to the power of exp2
sgn(exp1)	sign function
step(exp1)	unit step function
kahan3(exp1, exp2, exp3)	Extended precision addition of arguments
kahan4(exp1, exp2, exp3, exp4)	Extended precision addition of arguments
vec_max	maximum of all the values over the entire region or interface
vec_min	minimum of all the values over the entire region or interface
vec_sum	sum of all the values over the entire region or interface

Table 10.3: Error Functions

Function	Description
erfc(exp1)	complementary error function
derfcdx(exp1)	derivative of complementary error function
erfc_inv(exp1)	inverse complementary error function
derfc_invdx(exp1)	derivative of inverse complementary error function
erf(exp1)	error function
derfdx(exp1)	derivative error function
erf_inv(exp1)	inverse error function
derf_invdx(exp1)	derivative of inverse error function

Table 10.4: Fermi Integral Functions

Function	Description
Fermi(exp1)	Fermi Integral
dFermidx(exp1)	derivative of Fermi Integral
InvFermi(exp1)	inverse of the Fermi Integral
dInvFermidx(exp1)	derivative of InvFermi Integral

Table 10.5: Gauss-Fermi Integral Functions

gfi(exp1, exp2)	Gauss-Fermi Integral
dgfidx(exp1, exp2)	Derivative of Gauss-Fermi Integral with respect to first argument
igfi(exp1, exp2)	Inverse Gauss-Fermi Integral
digfidx(exp1, exp2)	Derivative of Inverse Gauss-Fermi Integral with respect to first argument

In [Table 10.2](#) are the built in functions of SYMDIFF. Note that the pow function uses the , operator to separate arguments. In addition an expression like pow(a,b+y) is equivalent to an expression like a^(b+y). Both exp and log are provided since many derivative expressions can be expressed in terms of these two functions. It is possible to nest expressions within functions and vice-versa. [Table 10.3](#) lists the error functions, derivatives, and inverses. [Table 10.4](#) lists the Fermi functions, and are based on the Joyce-Dixon Approximation [4]. The Gauss-Fermi functions are listed in [Table 10.5](#), based on [7].

## 10.2.4 Commands

Table 10.6: Commands.

Command	Description
diff(obj1, var)	Take derivative of obj1 with respect to variable var
expand(obj)	Expand out all multiplications into a sum of products
help	Print description of commands
scale(obj)	Get constant factor
sign(obj)	Get sign as 1 or -1
simplify(obj)	Simplify as much as possible
subst(obj1,obj2,obj3)	substitute obj3 for obj2 into obj1
unscaledval(obj)	Get value without constant scaling
unsignedval(obj)	Get unsigned value

Commands are shown in [Table 10.6](#). While they appear to have the same form as functions, they are special in the sense that they manipulate expressions and are never present in the expression which results. For example, note the result of the following command

```
> diff(a*b, b)
a
```

## 10.2.5 User functions

Table 10.7: Commands for user functions.

Command	Description
<code>clear(name)</code>	Clears the name of a user function
<code>declare(name(arg1, arg2, ...))</code>	declare function name taking dummy arguments <code>arg1, arg2, ...</code> . Derivatives assumed to be 0
<code>define(name(arg1, arg2, ...), obj1, obj2, ...)</code>	declare function name taking arguments <code>arg1, arg2, ...</code> having corresponding derivatives <code>obj1, obj2, ...</code>

Commands for specifying and manipulating user functions are listed in [Table 10.7](#). They are used in order to define new user function, as well as the derivatives of the functions with respect to the user variables. For example, the following expression defines a function named `f` which takes one argument.

```
> define(f(x), 0.5*x)
```

The list after the function prototype is used to define the derivatives with respect to each of the independent variables. Once defined, the function may be used in any other expression. In additions the any expression can be used as an arguments. For example:

```
> diff(f(x*y), x)
((0.5 * (x * y)) * y)
> simplify((0.5 * (x * y)) * y)
(0.5 * x * (y^2))
```

The chain rule is applied to ensure that the derivative is correct. This can be expressed as

$$\frac{\partial}{\partial x} f(u, v, \dots) = \frac{\partial u}{\partial x} \cdot \frac{\partial}{\partial u} f(u, v, \dots) + \frac{\partial v}{\partial x} \cdot \frac{\partial}{\partial v} f(u, v, \dots) + \dots$$

The `declare` command is required when the derivatives of two user functions are based on one another. For example:

```
> declare(cos(x))
cos(x)
> define(sin(x), cos(x))
sin(x)
> define(cos(x), -sin(x))
cos(x)
```

When declared, a functions derivatives are set to 0, unless specified with a `define` command. It is now possible to use these expressions as desired.

```
> diff(sin(cos(x)), x)
(cos(cos(x)) * (-sin(x)))
> simplify(cos(cos(x)) * (-sin(x)))
(-cos(cos(x)) * sin(x))
```

### 10.2.6 Macro assignment

The use of macro assignment allows the substitution of expressions into new expressions. Every time a command is successfully used, the resulting expression is assigned to a special macro definition, `$_`.

In this example, the result of the each command is substituted into the next.

```
> a+b
(a + b)
> $_-b
((a + b) - b)
> simplify($_)
a
```

In addition to the default macro definition, it is possible to specify a variable identifier by using the `$` character followed by an alphanumeric string beginning with a letter. In addition to letters and numbers, a `_` character may be used as well. A macro which has not previously assigned will implicitly use `0` as its value.

This example demonstrates the use of macro assignment.

```
> $a1 = a + b
(a + b)
> $a2 = a - b
(a - b)
> simplify($a1+$a2)
(2 * a)
```

## 10.3 Invoking SYMDIFF from DEVSIM

### 10.3.1 Equation parser

The `devsim.symdiff()` (page 116) should be used when defining new functions to the parser. Since you do not specify regions or interfaces, it considers all strings as being independent variables, as opposed to models. *Model Commands* (page 102) presents commands which have the concepts of models. A `;` should be used to separate each statement.

This is a sample invocation from DEVSIM

```
% symdiff(expr="subst(dog * cat, dog, bear)")
(bear * cat)
```

### 10.3.2 Evaluating external math

The `devsim.register_function()` (page 114) is used to evaluate functions declared or defined within SYMDIFF. A Python procedure may then be used taking the same number of arguments. For example:

```
from math import cos
from math import sin
symdiff(expr="declare(sin(x))")
symdiff(expr="define(cos(x), -sin(x))")
symdiff(expr="define(sin(x), cos(x))")
register_function(name="cos", nargs=1)
register_function(name="sin", nargs=1)
```

The `cos` and `sin` function may then be used for model evaluation. For improved efficiency, it is possible to create procedures written in C or C++ and load them into Python.

### 10.3.3 Models

When used with the model commands discussed in *Model Commands* (page 102), DEVSIM has been extended to recognize model names in the expressions. In this situation, the derivative of a model named, `model`, with respect to another model, `variable`, is then `model:variable`.

During the element assembly process, DEVSIM evaluates all models of an equation together. While the expressions in models and their derivatives are independent, the software uses a caching scheme to ensure that redundant calculations are not performed. It is recommended, however, that users developing their own models investigate creating intermediate models in order to improve their understanding of the equations that they wish to be assembled.



# Chapter 11

## Visualization

### 11.1 Introduction

DEVSIM is able to create files for visualization tools. Information about acquiring these tools are presented in *External Software Tools* (page 83).

### 11.2 Using Tecplot

The `devsim.write_devices()` (page 102) is used to create an ASCII file suitable for use in Tecplot. Edge quantities are interpolated onto the node positions in the resulting structure. Element edge quantities are interpolated onto the centers of each triangle or tetrahedron in the mesh.

```
write_devices(file="mos_2d_dd.dat", type="tecplot")
```

### 11.3 Using Postmini

The `devsim.write_devices()` (page 102) is used to create an ASCII file suitable for use in Postmini. Edge and element edge quantities are interpolated onto the node positions in the resulting structure.

```
write_devices(file="mos_2d_dd.flps", type="floops")
```

### 11.4 Using Paraview

The `devsim.write_devices()` (page 102) is used to create an ASCII file suitable for use in ParaView. Edge quantities are interpolated onto the node positions in the resulting structure. Element edge quantities are interpolated onto the centers of each triangle or tetrahedron in the mesh.

```
write_devices(file="mos_2d_dd", type="vtk")
```

One `vtu` file per device region will be created, as well as a `vtm` file which may be used to load all of the device regions into ParaView.

## 11.5 Using VisIt

VisIt supports reading the Tecplot and ParaView formats. When using the `vtk` option on the `devsim.write_devices()` (page 102), a file with a `visit` filename extension is created to load the files created for ParaView.

## 11.6 DEVSIM

DEVSIM has several commands for getting information on the mesh. Those related to post processing are described in *Model Commands* (page 102) and *Geometry Commands* (page 93).

See *Loading and saving results* (page 64) for information about loading and saving mesh information to a file.

# Chapter 12

## Installation

### 12.1 Availability

Information about the open source version of DEVSIM is available from <https://devsim.org>. This site contains up-to-date information about where to obtain compiled and source code versions of this software. It also contains information about how to get support and participate in the development of this project.

### 12.2 Supported platforms

DEVSIM is compiled and tested on the platforms in [Table 12.1](#). If you require a version on a different software platform, please contact us.

Table 12.1: Current platforms for DEVSIM.

Platform	Bits	OS Version
Microsoft Windows	64	Microsoft Windows 10
Linux	64	Red Hat Enterprise Linux 7 (Centos 7 compatible)
Apple macOS	64	macOS 10.13 (High Sierra)

### 12.3 Binary availability

Compiled packages for the the platforms in [Table 12.1](#) are currently available from <https://github.com/devsim/devsim/releases>. The prerequisites on each platform are described in the `linux.txt`, `macos.txt`, and `windows.txt`.

## 12.4 Source code availability

DEVSIM is also available in source code form from <https://github.com/devsim/devsim>.

## 12.5 Directory Structure

A DEVSIM directory is created with the following sub directories listed in Table 12.2.

Table 12.2: Directory structure for DEVSIM.

bin	contains the devsim tcl binary
lib/devsim	contains the devsim interpreter modules
lib/devsim/python_packages	contains runtime libraries
doc	contains product documentation
examples	contains example scripts
testing	contains additional examples used for testing

## 12.6 Running DEVSIM

See *User Interface* (page 67) for instructions on how to invoke DEVSIM.

## Chapter 13

# Additional Information

### 13.1 DEVSIM License

Individual files are covered by the license terms contained in the comments at the top of the file. Contributions to this project are subject to the license terms of their authors. In general, DEVSIM is covered by the Apache License, Version 2.0 [11]. Please see the NOTICE and LICENSE file for more information.

### 13.2 SYMDIFF

SYMDIFF is available from <https://syndiff.org> under the terms of the Apache License, Version 2.0 [11].

### 13.3 External Software Tools

#### 13.3.1 Gmsh

Gmsh [3] is available from <http://gmsh.info>.

#### 13.3.2 Paraview

ParaView is an open source visualization tool available at <http://www.paraview.org>.

### 13.3.3 Tecplot

Tecplot is a commercial visualization tool available from <http://www.tecplot.com>.

### 13.3.4 VisIt

VisIt is an open source visualization tool available from <https://wci.llnl.gov/codes/visit/>.

## 13.4 Library Availability

The following tools are used to build DEVSIM.

### 13.4.1 BLAS and LAPACK

These are the basic linear algebra routines used directly by DEVSIM and by SuperLU. Reference versions are available from <http://www.netlib.org>. There are optimized versions available from other vendors.

### 13.4.2 Python

A Python distribution is required for using DEVSIM and is distributed with many operating system. Additional information is available at <https://www.python.org>. It should be stressed that binary packages must be compatible with the Python distribution used by DEVSIM.

### 13.4.3 SQLite3

SQLite3 is an open source database engine used for the material database and is available from <https://www.sqlite.org>.

### 13.4.4 SuperLU

SuperLU [2] is used within DEVSIM and is available from <http://crd-legacy.lbl.gov/~xiaoye/SuperLU>:

Copyright (c) 2003, The Regents of the University of California, through Lawrence Berkeley National Laboratory (subject to receipt of any required approvals from U.S. Dept. of Energy)

All rights reserved.

Redistribution and use in source and binary forms, with or without modification, are permitted provided that the following conditions are met:

(1) Redistributions of source code must retain the above copyright notice, this list of conditions and the following disclaimer. (2) Redistributions in binary form must reproduce the above copyright notice, this list of conditions and the following disclaimer in the documentation and/or

other materials provided with the distribution. (3) Neither the name of Lawrence Berkeley National Laboratory, U.S. Dept. of Energy nor the names of its contributors may be used to endorse or promote products derived from this software without specific prior written permission.

THIS SOFTWARE IS PROVIDED BY THE COPYRIGHT HOLDERS AND CONTRIBUTORS "AS IS" AND ANY EXPRESS OR IMPLIED WARRANTIES, INCLUDING, BUT NOT LIMITED TO, THE IMPLIED WARRANTIES OF MERCHANTABILITY AND FITNESS FOR A PARTICULAR PURPOSE ARE DISCLAIMED. IN NO EVENT SHALL THE COPYRIGHT OWNER OR CONTRIBUTORS BE LIABLE FOR ANY DIRECT, INDIRECT, INCIDENTAL, SPECIAL, EXEMPLARY, OR CONSEQUENTIAL DAMAGES (INCLUDING, BUT NOT LIMITED TO, PROCUREMENT OF SUBSTITUTE GOODS OR SERVICES; LOSS OF USE, DATA, OR PROFITS; OR BUSINESS INTERRUPTION) HOWEVER CAUSED AND ON ANY THEORY OF LIABILITY, WHETHER IN CONTRACT, STRICT LIABILITY, OR TORT (INCLUDING NEGLIGENCE OR OTHERWISE) ARISING IN ANY WAY OUT OF THE USE OF THIS SOFTWARE, EVEN IF ADVISED OF THE POSSIBILITY OF SUCH DAMAGE.

#### **13.4.5 zlib**

`zlib` is an open source compression library available from <https://zlib.net>.



# Chapter 14

## Command Reference

### 14.1 Circuit Commands

Commands are for adding circuit elements to the simulation.

`devsim.add_circuit_node(name, value, variable_update)`

Adds a circuit node for use in circuit or multi-device simulation

#### Parameters

- **name** (*str*) – Name of the circuit node being created
- **value** (*Float*, *optional*) – initial value (default 0.0)
- **variable\_update** (*{'default', 'log\_damp', 'positive'}*) – update type for circuit variable

`devsim.circuit_alter(name, param, value)`

Alter the value of a circuit element parameter

#### Parameters

- **name** (*str*) – Name of the circuit node being created
- **param** (*str*, *optional*) – parameter being modified (default 'value')
- **value** (*Float*) – value for the parameter

`devsim.circuit_element(name, value, n1, n2, acreal, acimag)`

Adds a circuit element external to the devices

#### Parameters

- **name** (*str*) – Name of the circuit element being created. A prefix of 'V' is for voltage source, 'I' for current source, 'R' for resistor, 'L' for inductor, and 'C' for capacitor.
- **value** (*Float*, *optional*) – value for the default parameter of the circuit element (default 0.0)

- **n1** (*str*) – circuit node
- **n2** (*str*) – circuit node
- **acreal** (*Float*, *optional*) – real part of AC source for voltage (default 0.0)
- **acimag** (*Float*, *optional*) – imag part of AC source for voltage (default 0.0)

**devsim.circuit\_node\_alias**(*node*, *alias*)

Create an alias for a circuit node

**Parameters**

- **node** (*str*) – circuit node being aliased
- **alias** (*str*) – alias for the circuit node

**devsim.delete\_circuit**()

Deletes any present circuit and its solutions.

**devsim.get\_circuit\_equation\_number**(*node*)

Returns the row number correspond to circuit node in a region. Values are only valid when during the course of a solve.

**Parameters**

**node** (*str*) – circuit node

**devsim.get\_circuit\_node\_list**()

Gets the list of the nodes in the circuit.

**devsim.get\_circuit\_node\_value**(*solution*, *node*)

Gets the value of a circuit node for a given solution type.

**Parameters**

- **solution** (*str*, *optional*) – name of the solution. ‘dcop’ is the name for the DC solution (default ‘dcop’)
- **node** (*str*) – circuit node of interest

**devsim.get\_circuit\_solution\_list**()

Gets the list of available circuit solutions.

**devsim.set\_circuit\_node\_value**(*solution*, *node*, *value*)

Sets the value of a circuit node for a given solution type.

**Parameters**

- **solution** (*str*, *optional*) – name of the solution. ‘dcop’ is the name for the DC solution (default ‘dcop’)
- **node** (*str*) – circuit node of interest
- **value** (*Float*, *optional*) – new value (default 0.0)

## 14.2 Equation Commands

Commands for manipulating equations on contacts, interface, and regions

```
devsim.contact_equation(device, contact, name, circuit_node, edge_charge_model,
                        edge_current_model, edge_model, edge_volume_model,
                        element_charge_model, element_current_model, element_model,
                        volume_node0_model, volume_node1_model, node_charge_model,
                        node_current_model, node_model)
```

Create a contact equation on a device

### Parameters

- **device** (*str*) – The selected device
- **contact** (*str*) – Contact on which to apply this command
- **name** (*str*) – Name of the contact equation being created
- **circuit\_node** (*str*, *optional*) – Name of the circuit we integrate the flux into
- **edge\_charge\_model** (*str*, *optional*) – Name of the edge model used to determine the charge at this contact
- **edge\_current\_model** (*str*, *optional*) – Name of the edge model used to determine the current flowing out of this contact
- **edge\_model** (*str*, *optional*) – Name of the edge model being integrated at each edge at this contact
- **edge\_volume\_model** (*str*, *optional*) – Name of the edge model being integrated over the volume of each edge on the contact
- **element\_charge\_model** (*str*, *optional*) – Name of the element edge model used to determine the charge at this contact
- **element\_current\_model** (*str*, *optional*) – Name of the element edge model used to determine the current flowing out of this contact
- **element\_model** (*str*, *optional*) – Name of the element edge model being integrated at each edge at this contact
- **volume\_node0\_model** (*str*, *optional*) – Name of the element model being integrated over the volume of node 0 of each edge on the contact
- **volume\_node1\_model** (*str*, *optional*) – Name of the element model being integrated over the volume of node 1 of each edge on the contact
- **node\_charge\_model** (*str*, *optional*) – Name of the node model used to determine the charge at this contact
- **node\_current\_model** (*str*, *optional*) – Name of the node model used to determine the current flowing out of this contact
- **node\_model** (*str*, *optional*) – Name of the node model being integrated at each node at this contact

**devsim.custom\_equation**(*name, procedure*)

Custom equation assembly. See [Custom Matrix assembly](#) (page 52) for a description of how the function should be structured.

**Parameters**

- **name** (*str*) – Name of the custom equation being created
- **procedure** (*str*) – The procedure to be called

**devsim.delete\_contact\_equation**(*device, contact, name*)

This command deletes an equation from a contact.

**Parameters**

- **device** (*str*) – The selected device
- **contact** (*str*) – Contact on which to apply this command
- **name** (*str*) – Name of the contact equation being deleted

**devsim.delete\_equation**(*device, region, name*)

This command deletes an equation from a region.

**Parameters**

- **device** (*str*) – The selected device
- **region** (*str*) – The selected region
- **name** (*str*) – Name of the equation being deleted

**devsim.delete\_interface\_equation**(*device, interface, name*)

This command deletes an equation from an interface.

**Parameters**

- **device** (*str*) – The selected device
- **interface** (*str*) – Interface on which to apply this command
- **name** (*str*) – Name of the interface equation being deleted

**devsim.equation**(*device, region, name, variable\_name, node\_model, edge\_model, edge\_volume\_model, time\_node\_model, element\_model, volume\_node0\_model, volume\_node1\_model, variable\_update*)

Specify an equation to solve on a device

**Parameters**

- **device** (*str*) – The selected device
- **region** (*str*) – The selected region
- **name** (*str*) – Name of the equation being created
- **variable\_name** (*str*) – Name of the node solution being solved

- **node\_model** (*str*, *optional*) – Name of the node model being integrated at each node in the device volume
- **edge\_model** (*str*, *optional*) – Name of the edge model being integrated over each edge in the device volume
- **edge\_volume\_model** (*str*, *optional*) – Name of the edge model being integrated over the volume of each edge in the device volume
- **time\_node\_model** (*str*, *optional*) – Name of the time dependent node\_model being integrated at each node in the device volume
- **element\_model** (*str*, *optional*) – Name of the element model being integrated over each edge in the device volume
- **volume\_node0\_model** (*str*, *optional*) – Name of the element model being integrated over the volume of node 0 of each edge on the contact
- **volume\_node1\_model** (*str*, *optional*) – Name of the element model being integrated over the volume of node 1 of each edge on the contact
- **variable\_update** ({'default', 'log\_damp', 'positive'}) – update type for circuit variable

## Notes

The integration variables can be changed in 2D for cylindrical coordinate systems by setting the appropriate parameters as described in *Cylindrical Coordinate Systems* (page 53).

In order to set the node volumes for integration of the `edge_volume_model`, it is possible to do something like this:

```
devsim.edge_model(device="device", region="region", name="EdgeNodeVolume", equation="0.5*SurfaceArea*EdgeLength")
devsim.set_parameter(name="edge_node0_volume_model", value="EdgeNodeVolume")
devsim.set_parameter(name="edge_node1_volume_model", value="EdgeNodeVolume")
```

`devsim.get_contact_equation_command(device, contact, name)`

This command gets the options used when creating this contact equation.

### Parameters

- **device** (*str*) – The selected device
- **contact** (*str*) – Contact on which to apply this command
- **name** (*str*) – Name of the contact equation being command options returned

`devsim.get_contact_equation_list(device, contact)`

This command gets a list of equations on the specified contact.

### Parameters

- **device** (*str*) – The selected device
- **contact** (*str*) – Contact on which to apply this command

**devsim.get\_equation\_command**(*device, region, name*)

This command gets the options used when creating this equation.

**Parameters**

- **device** (*str*) – The selected device
- **region** (*str*) – The selected region
- **name** (*str*) – Name of the equation being command options returned

**devsim.get\_equation\_list**(*device, region*)

This command gets a list of equations on the specified region.

**Parameters**

- **device** (*str*) – The selected device
- **region** (*str*) – The selected region

**devsim.get\_equation\_numbers**(*device, region, equation, variable*)

Returns a list of the equation numbers corresponding to each node in a region. Values are only valid when during the course of a solve.

**Parameters**

- **device** (*str*) – The selected device
- **region** (*str*) – The selected region
- **equation** (*str, optional*) – Name of the equation
- **variable** (*str, optional*) – Name of the variable

**devsim.get\_interface\_equation\_command**(*device, interface, name*)

This command gets the options used when creating this interface equation.

**Parameters**

- **device** (*str*) – The selected device
- **interface** (*str*) – Interface on which to apply this command
- **name** (*str*) – Name of the interface equation being command options returned

**devsim.get\_interface\_equation\_list**(*device, interface*)

This command gets a list of equations on the specified interface.

**Parameters**

- **device** (*str*) – The selected device
- **interface** (*str*) – Interface on which to apply this command

**devsim.interface\_equation**(*device, interface, name, name0, name1, interface\_model, type*)

Command to specify an equation at an interface

**Parameters**

- **device** (*str*) – The selected device
- **interface** (*str*) – Interface on which to apply this command
- **name** (*str*) – Name of the interface equation being created
- **name0** (*str*, *optional*) – Name of the equation coupling in region 0 being created (default ‘name’)
- **name1** (*str*, *optional*) – Name of the equation coupling in region 1 being created (default ‘name’)
- **interface\_model** (*str*) – When specified, the bulk equations on both sides of the interface are integrated together. This model is then used to specify how nodal quantities on both sides of the interface are balanced
- **type** (*{'continuous', 'fluxterm', 'hybrid'}* *required*) – Specifies the type of boundary condition

## 14.3 Geometry Commands

Commands for getting information about the device structure.

`devsim.get_contact_list(device)`

Gets a list of contacts on a device.

### Parameters

**device** (*str*) – The selected device

`devsim.get_device_list()`

Gets a list of devices on the simulation.

`devsim.get_element_node_list(device, region, contact, interface, reorder)`

Gets a list of nodes for each element on a device, region, contact, or interface.

### Parameters

- **device** (*str*) – The selected device
- **region** (*str*) – The selected region
- **contact** (*str*, *optional*) – If specified, gets the element nodes for the contact on the specified region
- **interface** (*str*, *optional*) – If specified, gets the element nodes for the interface on the specified region
- **reorder** (*bool*, *optional*) – If specified, reorders the element nodes in a manner compatible in meshing software (default False)

`devsim.get_interface_list(device)`

Gets a list of interfaces on a device.

### Parameters

**device** (*str*) – The selected device

`devsim.get_region_list(device, contact, interface)`

Gets a list of regions on a device, contact, or interface.

**Parameters**

- **device** (*str*) – The selected device
- **contact** (*str*, *optional*) – If specified, gets the name of the region belonging to this contact on the device
- **interface** (*str*, *optional*) – If specified, gets the name of the regions belonging to this interface on the device

`devsim.reset_devsim()`

Resets all data for clean restart.

## 14.4 Material Commands

Commands for manipulating parameters and material properties

`devsim.add_db_entry(material, parameter, value, unit, description)`

Adds an entry to the database

**Parameters**

- **material** (*str*) – Material name requested. `global` refers to all regions whose material does not have the parameter name specified
- **parameter** (*str*) – Parameter name
- **value** (*str*) – Value assigned for the parameter
- **unit** (*str*) – String describing the units for this parameter name
- **description** (*str*) – Description of the parameter for this material type.

### Notes

The `devsim.save_db()` (page 96) command is used to commit these added entries permanently to the database.

`devsim.close_db()`

Closes the database so that its entries are no longer available

`devsim.create_db(filename)`

Create a database to store material properties

**Parameters**

- **filename** (*str*) – filename to create for the db

`devsim.get_db_entry(material, parameter)`

This command returns a list containing the value, unit, and description for the requested material db entry

**Parameters**

- **material** (*str*) – Material name
- **parameter** (*str*) – Parameter name

`devsim.get_dimension(device)`

Get the dimension of the device

**Parameters**

**device** (*str*, *optional*) – The selected device

`devsim.get_material(device, region, contact)`

Returns the material for the specified region

**Parameters**

- **device** (*str*, *optional*) – The selected device
- **region** (*str*, *optional*) – The selected region
- **contact** (*str*, *optional*) – Contact on which to apply this command

`devsim.get_parameter(device, region, name)`

Get a parameter on a region, device, or globally.

**Parameters**

- **device** (*str*, *optional*) – The selected device
- **region** (*str*, *optional*) – The selected region
- **name** (*str*) – Name of the parameter name being retrieved

## Notes

Note that the **device** and **region** options are optional. If the region is not specified, the parameter is retrieved for the entire device. If the device is not specified, the parameter is retrieved for all devices. If the parameter is not found on the region, it is retrieved on the device. If it is not found on the device, it is retrieved over all devices.

`devsim.get_parameter_list(device, region)`

Get list of parameter names on region, device, or globally

**Parameters**

- **device** (*str*, *optional*) – The selected device
- **region** (*str*, *optional*) – The selected region

## Notes

Note that the `device` and `region` options are optional. If the region is not specified, the parameter is retrieved for the entire device. If the device is not specified, the parameter is retrieved for all devices. Unlike the `devsim.getParameter()`, parameter names on the the device are not retrieved if they do not exist on the region. Similarly, the parameter names over all devices are not retrieved if they do not exist on the device.

`devsim.open_db(filename, permissions)`

Open a database storing material properties

### Parameters

- **filename** (*str*) – filename to create for the db
- **permissions** (*{'readonly', 'readwrite'}*) – permissions on the db

`devsim.save_db()`

Saves any new or modified db entries to the database file

`devsim.set_material(device, region, contact, material)`

Sets the new material for a region

### Parameters

- **device** (*str, optional*) – The selected device
- **region** (*str, optional*) – The selected region
- **contact** (*str, optional*) – Contact on which to apply this command
- **material** (*str*) – New material name

`devsim.set_parameter(device, region, name, value)`

Set a parameter on region, device, or globally

### Parameters

- **device** (*str, optional*) – The selected device
- **region** (*str, optional*) – The selected region
- **name** (*str*) – Name of the parameter name being retrieved
- **value** (*any*) – value to set for the parameter

## Notes

Note that the `device` and `region` options are optional. If the region is not specified, the parameter is set for the entire device. If the device is not specified, the parameter is set for all devices.

## 14.5 Meshing Commands

Commands for reading and writing meshes

**devsim.add\_1d\_contact**(*material, mesh, name, tag*)

Add a contact to a 1D mesh

### Parameters

- **material** (*str*) – material for the contact being created
- **mesh** (*str*) – Mesh to add the contact to
- **name** (*str*) – Name for the contact being created
- **tag** (*str*) – Text label for the position to add the contact

**devsim.add\_1d\_interface**(*mesh, tag, name*)

Add an interface to a 1D mesh

### Parameters

- **mesh** (*str*) – Mesh to add the interface to
- **tag** (*str*) – Text label for the position to add the interface
- **name** (*str*) – Name for the interface being created

**devsim.add\_1d\_mesh\_line**(*mesh, tag, pos, ns, ps*)

Add a mesh line to a 1D mesh

### Parameters

- **mesh** (*str*) – Mesh to add the line to
- **tag** (*str, optional*) – Text label for the position
- **pos** (*str*) – Position for the mesh point
- **ns** (*Float, optional*) – Spacing from this point in the negative direction (default ps value)
- **ps** (*Float*) – Spacing from this point in the positive direction

**devsim.add\_1d\_region**(*mesh, tag1, tag2, region, material*)

Add a region to a 1D mesh

### Parameters

- **mesh** (*str*) – Mesh to add the line to
- **tag1** (*str*) – Text label for the position bounding the region being added
- **tag2** (*str*) – Text label for the position bounding the region being added
- **region** (*str*) – Name for the region being created
- **material** (*str*) – Material for the region being created

**devsim.add\_2d\_contact**(*name, material, mesh, region, xl, xh, yl, yh, bloat*)

Add an interface to a 2D mesh

**Parameters**

- **name** (*str*) – Name for the contact being created
- **material** (*str*) – material for the contact being created
- **mesh** (*str*) – Mesh to add the contact to
- **region** (*str*) – Name of the region included in the contact
- **xl** (*Float, optional*) – x position for corner of bounding box (default - MAXDOUBLE)
- **xh** (*Float, optional*) – x position for corner of bounding box (default +MAXDOUBLE)
- **yl** (*Float, optional*) – y position for corner of bounding box (default - MAXDOUBLE)
- **yh** (*Float, optional*) – y position for corner of bounding box (default +MAXDOUBLE)
- **bloat** (*Float, optional*) – Extend bounding box by this amount when search for mesh to include in region (default 1e-10)

**devsim.add\_2d\_interface**(*mesh, name, region0, region1, xl, xh, yl, yh, bloat*)

Add an interface to a 2D mesh

**Parameters**

- **mesh** (*str*) – Mesh to add the interface to
- **name** (*str*) – Name for the interface being created
- **region0** (*str*) – Name of the region included in the interface
- **region1** (*str*) – Name of the region included in the interface
- **xl** (*Float, optional*) – x position for corner of bounding box (default - MAXDOUBLE)
- **xh** (*Float, optional*) – x position for corner of bounding box (default +MAXDOUBLE)
- **yl** (*Float, optional*) – y position for corner of bounding box (default - MAXDOUBLE)
- **yh** (*Float, optional*) – y position for corner of bounding box (default +MAXDOUBLE)
- **bloat** (*Float, optional*) – Extend bounding box by this amount when search for mesh to include in region (default 1e-10)

`devsim.add_2d_mesh_line(mesh, pos, ns, ps)`

Add a mesh line to a 2D mesh

#### Parameters

- **mesh** (*str*) – Mesh to add the line to
- **pos** (*str*) – Position for the mesh point
- **ns** (*Float*) – Spacing from this point in the negative direction
- **ps** (*Float*) – Spacing from this point in the positive direction

`devsim.add_2d_region(mesh, region, material, xl, xh, yl, yh, bloat)`

Add a region to a 2D mesh

#### Parameters

- **mesh** (*str*) – Mesh to add the region to
- **region** (*str*) – Name for the region being created
- **material** (*str*) – Material for the region being created
- **xl** (*Float, optional*) – x position for corner of bounding box (default - MAXDOUBLE)
- **xh** (*Float, optional*) – x position for corner of bounding box (default +MAXDOUBLE)
- **yl** (*Float, optional*) – y position for corner of bounding box (default - MAXDOUBLE)
- **yh** (*Float, optional*) – y position for corner of bounding box (default +MAXDOUBLE)
- **bloat** (*Float, optional*) – Extend bounding box by this amount when search for mesh to include in region (default 1e-10)

`devsim.add_gmsh_contact(gmsh_name, material, mesh, name, region)`

Create a mesh to import a Gmsh mesh

#### Parameters

- **gmsh\_name** (*str*) – physical group name in the Gmsh file
- **material** (*str*) – material for the contact being created
- **mesh** (*str*) – name of the mesh being generated
- **name** (*str*) – name of the contact begin created
- **region** (*str*) – region that the contact is attached to

`devsim.add_gmsh_interface(gmsh_name, mesh, name, region0, region1)`

Create an interface for an imported Gmsh mesh

#### Parameters

- **gmsh\_name** (*str*) – physical group name in the Gmsh file
- **mesh** (*str*) – name of the mesh being generated
- **name** (*str*) – name of the interface begin created
- **region0** (*str*) – first region that the interface is attached to
- **region1** (*str*) – second region that the interface is attached to

**devsim.add\_gmsh\_region**(*gmsh\_name, mesh, region, material*)

Create a region for an imported Gmsh mesh

**Parameters**

- **gmsh\_name** (*str*) – physical group name in the Gmsh file
- **mesh** (*str*) – name of the mesh being generated
- **region** (*str*) – name of the region begin created
- **material** (*str*) – material for the region being created

**devsim.create\_1d\_mesh**(*mesh*)

Create a mesh to create a 1D device

**Parameters**

- **mesh** (*str*) – name of the 1D mesh being created

**devsim.create\_2d\_mesh**(*mesh*)

Create a mesh to create a 2D device

**Parameters**

- **mesh** (*str*) – name of the 2D mesh being created

**devsim.create\_contact\_from\_interface**(*device, region, interface, material, name*)

Creates a contact on a device from an existing interface

**Parameters**

- **device** (*str*) – The selected device
- **region** (*str*) – The selected region
- **interface** (*str*) – Interface on which to apply this command
- **material** (*str*) – material for the contact being created
- **name** (*str*) – name of the contact begin created

**devsim.create\_device**(*mesh, device*)

Create a device from a mesh

**Parameters**

- **mesh** (*str*) – name of the mesh being used to create a device
- **device** (*str*) – name of the device being created

`devsim.create_gmsh_mesh(mesh, file, coordinates, elements, physical_names)`

Create a mesh to import a Gmsh mesh

#### Parameters

- **mesh** (*str*) – name of the mesh being generated
- **file** (*str*, *optional*) – name of the Gmsh mesh file being read into DEVSIM
- **coordinates** (*list*, *optional*) – List of coordinate positions on mesh.
- **elements** (*list*, *optional*) – List of elements on the mesh.
- **physical\_names** (*list*, *optional*) – List of names for each contact, interface, and region on mesh.

#### Notes

This file will import a Gmsh format mesh from a file. Alternatively, the mesh structure may be passed in as arguments:

**coordinates** is a float list of positions in the mesh. Each coordinate adds an x, y, and z position so that the coordinate list length is 3 times the number of coordinates.

**physical\_names** is a list of contact, interface, and region names. It is referenced by index by the **elements** list.

**elements** is a list of elements. Each element adds

- Element Type (float)
  - 0 node
  - 1 edge
  - 2 triangle
  - 3 tetrahedron
- Physical Index
  - This indexes into the **physical\_names** list.
- Nodes
  - Each node of the element indexes into the **coordinates** list.

`devsim.create_interface_from_nodes(device, name, region0, region1, nodes0, nodes1)`

Creates an interface from lists of nodes

#### Parameters

- **device** (*str*) – The selected device
- **name** (*str*) – name of the interface being created
- **region0** (*str*) – first region that the interface is attached to
- **region1** (*str*) – second region that the interface is attached to

- **nodes0** (*str*) – list of nodes for the interface in the first region
- **nodes1** (*str*) – list of nodes for the interface in the second region

**devsim.delete\_device**(*device*)

Delete a device and its parameters

**Parameters**

**device** (*str*) – name of the device being deleted

**devsim.delete\_mesh**(*mesh*)

Delete a mesh so devices can no longer be instantiated from it.

**Parameters**

**mesh** (*str*) – Mesh to delete

**devsim.finalize\_mesh**(*mesh*)

Finalize a mesh so no additional mesh specifications can be added and devices can be created.

**Parameters**

**mesh** (*str*) – Mesh to finalize

**devsim.get\_mesh\_list**()

Get list of meshes

**devsim.load\_devices**(*file*)

Load devices from a DEVSIM file

**Parameters**

**file** (*str*) – name of the file to load the meshes from

**devsim.write\_devices**(*file, device, type*)

Write a device to a file for visualization or restart

**Parameters**

- **file** (*str*) – name of the file to write the meshes to
- **device** (*str, optional*) – name of the device to write
- **type** ({'devsim', 'devsim\_data', 'floops', 'tecplot', 'vtk'}) – format to use

## 14.6 Model Commands

Commands for defining and evaluating models

**devsim.contact\_edge\_model**(*device, contact, name, equation, display\_type*)

Create an edge model evaluated at a contact

**Parameters**

- **device** (*str*) – The selected device

- **contact** (*str*) – Contact on which to apply this command
- **name** (*str*) – Name of the contact edge model being created
- **equation** (*str*) – Equation used to describe the contact edge model being created
- **display\_type** (*{'vector', 'nodisplay', 'scalar'}*) – Option for output display in graphical viewer

`devsim.contact_node_model(device, contact, name, equation, display_type)`

Create an node model evaluated at a contact

#### Parameters

- **device** (*str*) – The selected device
- **contact** (*str*) – Contact on which to apply this command
- **name** (*str*) – Name of the contact node model being created
- **equation** (*str*) – Equation used to describe the contact node model being created
- **display\_type** (*{'scalar', 'nodisplay'}*) – Option for output display in graphical viewer

`devsim.cylindrical_edge_couple(device, region)`

This command creates the EdgeCouple model for 2D cylindrical simulation

#### Parameters

- **device** (*str*) – The selected device
- **region** (*str*) – The selected region

### Notes

This model is only available in 2D. The created variables are

- ElementCylindricalEdgeCouple (Element Edge Model)
- CylindricalEdgeCouple (Edge Model)

The `devsim.set_parameter()` (page 96) must be used to set

- **raxis\_variable**, the variable (x or y) which is the radial axis variable in the cylindrical coordinate system
- **raxis\_zero**, the location of the z axis for the radial axis variable

`devsim.cylindrical_node_volume(device, region)`

This command creates the NodeVolume model for 2D cylindrical simulation

#### Parameters

- **device** (*str*) – The selected device
- **region** (*str*) – The selected region

## Notes

This model is only available in 2D. The created variables are

- `ElementCylindricalNodeVolume@en0` (Element Edge Model)
- `ElementCylindricalNodeVolume@en1` (Element Edge Model)
- `CylindricalEdgeNodeVolume@n0` (Edge Model)
- `CylindricalEdgeNodeVolume@n1` (Edge Model)
- `CylindricalNodeVolume` (Node Model)

The `ElementCylindricalNodeVolume@en0` and `ElementCylindricalNodeVolume@en1` represent the node volume at each end of the element edge.

The `devsim.set_parameter()` (page 96) must be used to set

- `raxis_variable`, the variable (`x` or `y`) which is the radial axis variable in the cylindrical coordinate system
- `raxis_zero`, the location of the `z` axis for the radial axis variable

`devsim.cylindrical_surface_area(device, region)`

This command creates the `SurfaceArea` model for 2D cylindrical simulation

### Parameters

- **device** (*str*) – The selected device
- **region** (*str*) – The selected region

## Notes

This model is only available in 2D. The created variables are

- `CylindricalSurfaceArea` (Node Model)

and is the cylindrical surface area along each contact and interface node in the device region.

The `devsim.set_parameter()` (page 96) must be used to set

- `raxis_variable`, the variable (`x` or `y`) which is the radial axis variable in the cylindrical coordinate system
- `raxis_zero`, the location of the `z` axis for the radial axis variable

`devsim.debug_triangle_models(device, region)`

Debugging command used in the development of DEVSIM and used in regressions.

### Parameters

- **device** (*str*) – The selected device
- **region** (*str*) – The selected region

`devsim.delete_edge_model(device, region, name)`

Deletes an edge model from a region

**Parameters**

- **device** (*str*) – The selected device
- **region** (*str*) – The selected region
- **name** (*str*) – Name of the edge model being deleted

`devsim.delete_element_model(device, region, name)`

Deletes a element model from a region

**Parameters**

- **device** (*str*) – The selected device
- **region** (*str*) – The selected region
- **name** (*str*) – Name of the node model being deleted

`devsim.delete_interface_model(device, interface, name)`

Deletes an interface model from an interface

**Parameters**

- **device** (*str*) – The selected device
- **interface** (*str*) – Interface on which to apply this command
- **name** (*str*) – Name of the interface model being deleted

`devsim.delete_node_model(device, region, name)`

Deletes a node model from a region

**Parameters**

- **device** (*str*) – The selected device
- **region** (*str*) – The selected region
- **name** (*str*) – Name of the node model being deleted

`devsim.edge_average_model(device, region, node_model, edge_model, derivative, average_type)`

Creates an edge model based on the node model values

**Parameters**

- **device** (*str*) – The selected device
- **region** (*str*) – The selected region
- **node\_model** (*str*) – The node model from which we are creating the edge model. If **derivative** is specified, the edge model is created from `nodeModel:derivativeModel`

- **edge\_model** (*str*) – The edge model name being created. If **derivative** is specified, the edge models created are `edgeModel:derivativeModel@n0` `edgeModel:derivativeModel@n1`, which are the derivatives with respect to the derivative model on each side of the edge
- **derivative** (*str*, *optional*) – The node model of the variable for which the derivative is being taken. The node model `nodeModel:derivativeModel` is used to create the resulting edge models.
- **average\_type** (*{'arithmetic', 'geometric', 'gradient', 'negative\_gradient'}*) – The node models on both sides of the edge are averaged together to create one of the following types of averages.

## Notes

For a node model, creates 2 edge models referring to the node model value at both ends of the edge. For example, to calculate electric field:

```
devsim.edge_average_model(device=device, region=region, node_model="Potential",
edge_model="ElectricField", average_type="negative_gradient")
```

and the derivatives `ElectricField:Potential@n0` and `ElectricField:Potential@n1` are then created from

```
devsim.edge_average_model(device=device, region=region, node_model="Potential",
edge_model="ElectricField", average_type="negative_gradient", derivative="Potential")
```

**devsim.edge\_from\_node\_model** (*device, region, node\_model*)

For a node model, creates an 2 edge models referring to the node model value at both ends of the edge.

### Parameters

- **device** (*str*) – The selected device
- **region** (*str*) – The selected region
- **node\_model** (*str*) – The node model from which we are creating the edge model

## Notes

For example, to calculate electric field:

```
devsim.edge_from_node_model(device=device, region=region, node_model="Potential")
```

**devsim.edge\_model** (*device, region, name, equation, display\_type*)

Creates an edge model based on an equation

### Parameters

- **device** (*str*) – The selected device
- **region** (*str*) – The selected region
- **name** (*str*) – Name of the edge model being created

- **equation** (*str*) – Equation used to describe the edge model being created
- **display\_type** (*{'scalar', 'nodisplay', 'vector'}*) – Option for output display in graphical viewer

## Notes

The **vector** option uses an averaging scheme for the edge values projected in the direction of each edge. For a given model, *model*, the generated components in the visualization files is:

- *model\_x\_onNode*
- *model\_y\_onNode*
- *model\_z\_onNode* (3D)

This averaging scheme does not produce accurate results, and it is recommended to use the [\*devsim.element\\_from\\_edge\\_model\(\)\*](#) (page 107) to create components better suited for visualization. See [\*Visualization\*](#) (page 79) for more information about creating data files for external visualization programs.

**devsim.edge\_solution**(*device, region, name*)

Create node model whose values are set.

### Parameters

- **device** (*str*) – The selected device
- **region** (*str*) – The selected region
- **name** (*str*) – Name of the solution being created

**devsim.element\_from\_edge\_model**(*device, region, edge\_model, derivative*)

Creates element edge models from an edge model

### Parameters

- **device** (*str*) – The selected device
- **region** (*str*) – The selected region
- **edge\_model** (*str*) – The edge model from which we are creating the element model
- **derivative** (*str, optional*) – The variable we are taking with respect to *edge\_model*

## Notes

For an edge model `emodel`, creates an element models referring to the directional components on each edge of the element:

- `emodel_x`
- `emodel_y`

If the derivative variable option is specified, the `emodel@n0` and `emodel@n1` are used to create:

- `emodel_x:variable@en0`
- `emodel_y:variable@en0`
- `emodel_x:variable@en1`
- `emodel_y:variable@en1`
- `emodel_x:variable@en2`
- `emodel_y:variable@en2`

in 2D for each node on a triangular element. and

- `emodel_x:variable@en0`
- `emodel_y:variable@en0`
- `emodel_z:variable@en0`
- `emodel_x:variable@en1`
- `emodel_y:variable@en1`
- `emodel_z:variable@en1`
- `emodel_x:variable@en2`
- `emodel_y:variable@en2`
- `emodel_z:variable@en2`
- `emodel_x:variable@en3`
- `emodel_y:variable@en3`
- `emodel_z:variable@en3`

in 3D for each node on a tetrahedral element.

The suffix `en0` refers to the first node on the edge of the element and `en1` refers to the second node. `en2` and `en3` specifies the derivatives with respect the variable at the nodes opposite the edges on the element being considered.

`devsim.element_from_node_model(device, region, node_model)`

Creates element edge models from a node model

### Parameters

- **device** (*str*) – The selected device

- **region** (*str*) – The selected region
- **node\_model** (*str*) – The node model from which we are creating the edge model

## Notes

This command creates an element edge model from a node model so that each corner of the element is represented. A node model, `nmodel`, would be accessible as

- `nmodel@en0`
- `nmodel@en1`
- `nmodel@en2`
- `nmodel@en3` (3D)

where `en0`, and `en1` refers to the nodes on the element's edge. In 2D, `en2` refers to the node on the triangle node opposite the edge. In 3D, `en2` and `en3` refers to the nodes on the nodes off the element edge on the tetrahedral element.

`devsim.element_model(device, region, name, equation, display_type)`

Create a model evaluated on element edges.

### Parameters

- **device** (*str*) – The selected device
- **region** (*str*) – The selected region
- **name** (*str*) – Name of the element edge model being created
- **equation** (*str*) – Equation used to describe the element edge model being created
- **display\_type** (`{'scalar', 'nodisplay'}`) – Option for output display in graphical viewer

`devsim.element_pair_from_edge_model(device, region, edge_model, derivative)`

Creates element edge models from an edge model

### Parameters

- **device** (*str*) – The selected device
- **region** (*str*) – The selected region
- **edge\_model** (*str*) – The edge model from which we are creating the element model
- **derivative** (*str*, *optional*) – The variable we are taking with respect to `edge_model`

## Notes

For an edge model `emodel`, creates an element models referring to the directional components on each edge of the element:

- `emodel_node0_x`
- `emodel_node0_y`
- `emodel_node1_x`
- `emodel_node1_y`

If the derivative variable option is specified, the `emodel@n0` and `emodel@n1` are used to create:

- `emodel_node0_x:variable@en0`
- `emodel_node0_y:variable@en0`
- `emodel_node0_x:variable@en1`
- `emodel_node0_y:variable@en1`
- `emodel_node0_x:variable@en2`
- `emodel_node0_y:variable@en2`
- `emodel_node1_x:variable@en0`
- `emodel_node1_y:variable@en0`
- `emodel_node1_x:variable@en1`
- `emodel_node1_y:variable@en1`
- `emodel_node1_x:variable@en2`
- `emodel_node1_y:variable@en2`

in 2D for each node on a triangular element. and

- `emodel_node0_x:variable@en0`
- `emodel_node0_y:variable@en0`
- `emodel_node0_z:variable@en0`
- `emodel_node0_x:variable@en1`
- `emodel_node0_y:variable@en1`
- `emodel_node0_z:variable@en1`
- `emodel_node0_x:variable@en2`
- `emodel_node0_y:variable@en2`
- `emodel_node0_z:variable@en2`
- `emodel_node0_x:variable@en3`
- `emodel_node0_y:variable@en3`

- `emodel_node0_z:variable@en3`
- `emodel_node1_x:variable@en0`
- `emodel_node1_y:variable@en0`
- `emodel_node1_z:variable@en0`
- `emodel_node1_x:variable@en1`
- `emodel_node1_y:variable@en1`
- `emodel_node1_z:variable@en1`
- `emodel_node1_x:variable@en2`
- `emodel_node1_y:variable@en2`
- `emodel_node1_z:variable@en2`
- `emodel_node1_x:variable@en3`
- `emodel_node1_y:variable@en3`
- `emodel_node1_z:variable@en3`

in 3D for each node on a tetrahedral element.

The label `node0` and `node1` refer to the node on the edge for which the element field average was performed. For example, `node0` signifies that all edges connected to `node0` were used to calculate the element field.

The suffix `en0` refers to the first node on the edge of the element and `en1` refers to the second node. `en2` and `en3` specifies the derivatives with respect to the variable at the nodes opposite the edges on the element being considered.

`devsim.element_solution(device, region, name)`

Create node model whose values are set.

#### Parameters

- **device** (*str*) – The selected device
- **region** (*str*) – The selected region
- **name** (*str*) – Name of the solution being created

`devsim.get_edge_model_list(device, region)`

Returns a list of the edge models on the device region

#### Parameters

- **device** (*str*) – The selected device
- **region** (*str*) – The selected region

`devsim.get_edge_model_values(device, region, name)`

Get the edge model values calculated at each edge.

#### Parameters

- **device** (*str*) – The selected device
- **region** (*str*) – The selected region
- **name** (*str*) – Name of the edge model values being returned as a list

**devsim.get\_element\_model\_list**(*device, region*)

Returns a list of the element edge models on the device region

**Parameters**

- **device** (*str*) – The selected device
- **region** (*str*) – The selected region

**devsim.get\_element\_model\_values**(*device, region, name*)

Get element model values at each element edge

**Parameters**

- **device** (*str*) – The selected device
- **region** (*str*) – The selected region
- **name** (*str*) – Name of the element edge model values being returned as a list

**devsim.get\_interface\_model\_list**(*device, interface*)

Returns a list of the interface models on the interface

**Parameters**

- **device** (*str*) – The selected device
- **interface** (*str*) – Interface on which to apply this command

**devsim.get\_interface\_model\_values**(*device, interface, name*)

Gets interface model values evaluated at each interface node.

**Parameters**

- **device** (*str*) – The selected device
- **interface** (*str*) – Interface on which to apply this command
- **name** (*str*) – Name of the interface model values being returned as a list

**devsim.get\_node\_model\_list**(*device, region*)

Returns a list of the node models on the device region

**Parameters**

- **device** (*str*) – The selected device
- **region** (*str*) – The selected region

**devsim.get\_node\_model\_values**(*device, region, name*)

Get node model values evaluated at each node in a region.

**Parameters**

- **device** (*str*) – The selected device
- **region** (*str*) – The selected region
- **name** (*str*) – Name of the node model values being returned as a list

`devsim.interface_model(device, interface, equation)`

Create an interface model from an equation.

#### Parameters

- **device** (*str*) – The selected device
- **interface** (*str*) – Interface on which to apply this command
- **equation** (*str*) – Equation used to describe the interface node model being created

`devsim.interface_normal_model(device, region, interface)`

Creates edge models whose components are based on direction and distance to an interface

#### Parameters

- **device** (*str*) – The selected device
- **region** (*str*) – The selected region
- **interface** (*str*) – Interface on which to apply this command

### Notes

This model creates the following edge models:

- `iname_distance`
- `iname_normal_x` (2D and 3D)
- `iname_normal_y` (2D and 3D)
- `iname_normal_z` (3D only)

where `iname` is the name of the interface. The normals are of the closest node on the interface. The sign is toward the interface.

`devsim.node_model(device, region, name, equation, display_type)`

Create a node model from an equation.

#### Parameters

- **device** (*str*) – The selected device
- **region** (*str*) – The selected region
- **name** (*str*) – Name of the node model being created
- **equation** (*str*) – Equation used to describe the node model being created

- **display\_type** (*{'scalar', 'nodisplay'}*) – Option for output display in graphical viewer

**devsim.node\_solution**(*device, region, name*)

Create node model whose values are set.

**Parameters**

- **device** (*str*) – The selected device
- **region** (*str*) – The selected region
- **name** (*str*) – Name of the solution being created

**devsim.print\_edge\_values**(*device, region, name*)

Print edge values for debugging.

**Parameters**

- **device** (*str*) – The selected device
- **region** (*str*) – The selected region
- **name** (*str*) – Name of the edge model values being printed to the screen

**devsim.print\_element\_values**(*device, region, name*)

Print element values for debugging.

**Parameters**

- **device** (*str*) – The selected device
- **region** (*str*) – The selected region
- **name** (*str*) – Name of the element edge model values being printed to the screen

**devsim.print\_node\_values**(*device, region, name*)

Print node values for debugging.

**Parameters**

- **device** (*str*) – The selected device
- **region** (*str*) – The selected region
- **name** (*str*) – Name of the node model values being printed to the screen

**devsim.register\_function**(*name, nargs, procedure*)

This command is used to register a new Python procedure for evaluation by SYMDIFF.

**Parameters**

- **name** (*str*) – Name of the function
- **nargs** (*str*) – Number of arguments to the function
- **procedure** (*str*) – The procedure to be called

`devsim.set_edge_values(device, region, name, init_from, values)`

Set edge model values from another edge model, or a list of values.

**Parameters**

- **device** (*str*) – The selected device
- **region** (*str*) – The selected region
- **name** (*str*) – Name of the edge model being initialized
- **init\_from** (*str*, *optional*) – Node model we are using to initialize the edge solution
- **values** (*list*, *optional*) – List of values for each edge in the region.

`devsim.set_element_values(device, region, name, init_from, values)`

Set element model values from another element model, or a list of values.

**Parameters**

- **device** (*str*) – The selected device
- **region** (*str*) – The selected region
- **name** (*str*) – Name of the element model being initialized
- **init\_from** (*str*, *optional*) – Node model we are using to initialize the element solution
- **values** (*list*, *optional*) – List of values for each element in the region.

`devsim.set_node_value(device, region, name, index, value)`

A uniform value is used if index is not specified. Note that equation based node models will lose this value if their equation is recalculated.

**Parameters**

- **device** (*str*) – The selected device
- **region** (*str*) – The selected region
- **name** (*str*) – Name of the node model being whose value is being set
- **index** (*int*) – Index of node being set
- **value** (*Float*) – Value of node being set

`devsim.set_node_values(device, region, name, init_from, values)`

Set node model values from another node model, or a list of values.

**Parameters**

- **device** (*str*) – The selected device
- **region** (*str*) – The selected region
- **name** (*str*) – Name of the node model being initialized

- **init\_from** (*str*, *optional*) – Node model we are using to initialize the node solution
- **values** (*list*, *optional*) – List of values for each node in the region.

`devsim.symdiff(expr)`

This command returns an expression. All strings are treated as independent variables. It is primarily used for defining new functions to the parser.

**Parameters**

**expr** (*str*) – Expression to send to SYMDIFF

`devsim.vector_element_model(device, region, element_model)`

Create vector components from an element edge model

**Parameters**

- **device** (*str*) – The selected device
- **region** (*str*) – The selected region
- **element\_model** (*str*) – The element model for which we are calculating the vector components

## Notes

This command creates element edge models from an element model which represent the vector components on the element edge. An element model, `emodel`, would then have

- `emodel_x`
- `emodel_y`
- `emodel_z` (3D only)

The primary use of these components are for visualization.

`devsim.vector_gradient(device, region, node_model, calc_type)`

Creates the vector gradient for noise analysis

**Parameters**

- **device** (*str*) – The selected device
- **region** (*str*) – The selected region
- **node\_model** (*str*) – The node model from which we are creating the edge model
- **calc\_type** (`{'default', 'avoidzero'}`) – The node model from which we are creating the edge model

## Notes

Used for noise analysis. The `avoidzero` option is important for noise analysis, since a node model value of zero is not physical for some contact and interface boundary conditions. For a given node model, `model`, a node model is created in each direction:

- `model_gradx` (1D)
- `model_grady` (2D and 3D)
- `model_gradz` (3D)

It is important not to use these models for simulation, since DEVSIM, does not have a way of evaluating the derivatives of these models. The models can be used for integrating the impedance field, and other postprocessing. The `devsim.element_from_edge_model()` (page 107) command can be used to create gradients for use in a simulation.

## 14.7 Solver Commands

Commands for simulation

`devsim.get_contact_charge(device, contact, equation)`

Get charge at the contact

### Parameters

- **device** (*str*) – The selected device
- **contact** (*str*) – Contact on which to apply this command
- **equation** (*str*) – Name of the contact equation from which we are retrieving the charge

`devsim.get_contact_current(device, contact, equation)`

Get current at the contact

### Parameters

- **device** (*str*) – The selected device
- **contact** (*str*) – Contact on which to apply this command
- **equation** (*str*) – Name of the contact equation from which we are retrieving the current

`devsim.get_matrix_and_rhs(format)`

Returns matrices and rhs vectors.

### Parameters

**format** (`{'csc', 'csr'}` *required*) – Option for returned matrix format.

`devsim.set_initial_condition(static_rhs, dynamic_rhs)`

Sets the initial condition for subsequent transient solver steps.

**Parameters**

- **static\_rhs** (*list, optional*) – List of double values for non time-displacement terms in right hand side.
- **dynamic\_rhs** (*list, optional*) – List of double values for time-displacement terms in right hand side.

`devsim.solve`(*type, solver\_type, absolute\_error, relative\_error, maximum\_error, charge\_error, gamma, tdelta, maximum\_iterations, maximum\_divergence, frequency, output\_node, info, symbolic\_iteration\_limit*)

Call the solver. A small-signal AC source is set with the circuit voltage source.

**Parameters**

- **type** (*{'dc', 'ac', 'noise', 'transient\_dc', 'transient\_bdf1', 'transient\_bdf2', 'transient\_tr'} required*) – type of solve being performed
- **solver\_type** (*{'direct', 'iterative'} required*) – Linear solver type
- **absolute\_error** (*Float, optional*) – Required update norm in the solve (default 0.0)
- **relative\_error** (*Float, optional*) – Required relative update in the solve (default 0.0)
- **maximum\_error** (*Float, optional*) – Maximum absolute error before solve stops (default MAXDOUBLE)
- **charge\_error** (*Float, optional*) – Relative error between projected and solved charge during transient simulation (default 0.0)
- **gamma** (*Float, optional*) – Scaling factor for transient time step (default 1.0)
- **tdelta** (*Float, optional*) – time step (default 0.0)
- **maximum\_iterations** (*int, optional*) – Maximum number of iterations in the DC solve (default 20)
- **maximum\_divergence** (*int, optional*) – Maximum number of diverging iterations during solve (default 20)
- **frequency** (*Float, optional*) – Frequency for small-signal AC simulation (default 0.0)
- **output\_node** (*str, optional*) – Output circuit node for noise simulation
- **info** (*bool, optional*) – Solve command return convergence information (default False)
- **symbolic\_iteration\_limit** (*int, optional*) – Reuse symbolic matrix factorization after this number of iterations (default 1)

# Chapter 15

## Example Overview

In the following chapters, examples are presented for the use of DEVSIM to solve some simulation problems. Examples are also located in the DEVSIM distribution and their location is mentioned in *Directory structure for DEVSIM*. (page 82).

Additional examples are available online, and listed here:

- <https://devsim.org/introduction.html#examples>

The following example directories are contained in the distribution.

### 15.1 capacitance

These are 1D and 2D capacitor simulations, using the internal mesher. A description of these examples is presented in *Capacitor* (page 123).

### 15.2 diode

This is a collection of 1D, 2D, and 3D diode structures using the internal mesher, as well as Gmsh. These examples are discussed in *Diode* (page 135).

### 15.3 bioapp1

This is a biosensor application.

## 15.4 vector\_potential

This is a 2D magnetic field simulation solving for the magnetic potential. The simulation script is `vector_potential/twowire.py`. A simulation result for two wires conducting current is shown in Fig. 15.1.

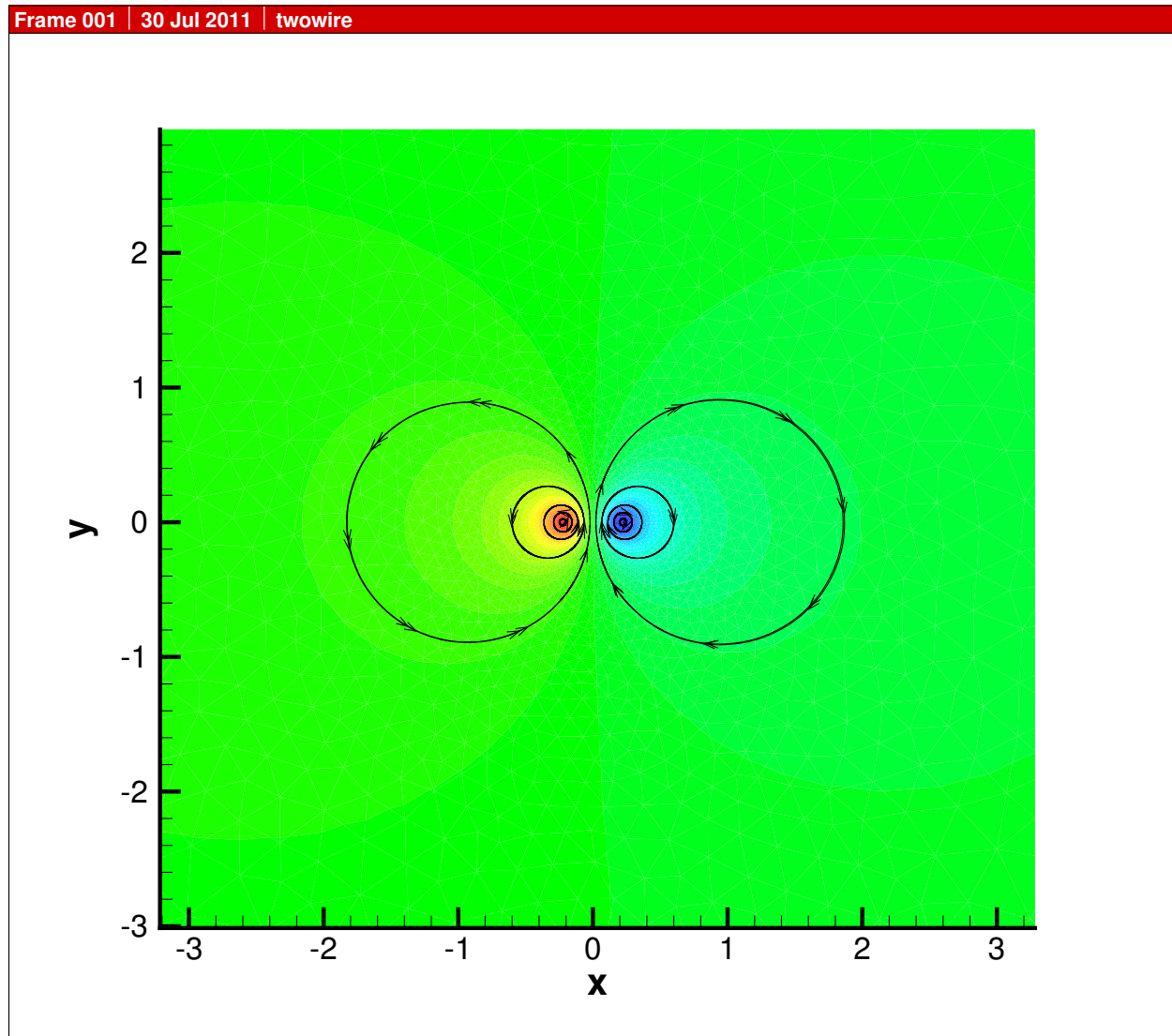


Fig. 15.1: Simulation result for solving for the magnetic potential and field. The coloring is by the Z component of the magnetic potential, and the stream traces are for components of magnetic field.

## 15.5 mobility

This is an advanced example using electric field dependent mobility models.



# Chapter 16

## Capacitor

### 16.1 Overview

In this chapter, we present a capacitance simulations. The purpose is to demonstrate the use of DEVSIM with a rather simple example. The first example in *1D Capacitor* (page 123) is called `cap1d.py` and is located in the `examples/capacitance` directory distributed with DEVSIM. In this example, we have manually taken the derivative expressions. In other examples, we will show use of SYMDIFF to create the derivatives in an automatic fashion. The second example is in *2D Capacitor* (page 127).

### 16.2 1D Capacitor

#### 16.2.1 Equations

In this example, we are solving Poisson's equation. In differential operator form, the equation to be solved over the structure is:

$$\epsilon \nabla^2 \psi = 0$$

and the contact boundary equations are

$$\psi_i - V_c = 0$$

where  $\psi_i$  is the potential at the contact node and  $V_c$  is the applied voltage.

#### 16.2.2 Creating the mesh

The following statements create a one-dimensional mesh which is 1 cm long with a 0.1 cm spacing. A contact is placed at 0 and 1 and are named `contact1` and `contact2` respectively.

```
from devsim import *
device="MyDevice"
region="MyRegion"

###
### Create a 1D mesh
###
create_1d_mesh (mesh="mesh1")
add_1d_mesh_line (mesh="mesh1", pos=0.0, ps=0.1, tag="contact1")
add_1d_mesh_line (mesh="mesh1", pos=1.0, ps=0.1, tag="contact2")
add_1d_contact (mesh="mesh1", name="contact1", tag="contact1",
    material="metal")
add_1d_contact (mesh="mesh1", name="contact2", tag="contact2",
    material="metal")
add_1d_region (mesh="mesh1", material="Si", region=region,
    tag1="contact1", tag2="contact2")
finalize_mesh (mesh="mesh1")
create_device (mesh="mesh1", device=device)
```

## 16.3 Setting device parameters

In this section, we set the value of the permittivity to that of  $\text{SiO}_2$ .

```
###
### Set parameters on the region
###
set_parameter(device=device, region=region,
    name="Permittivity", value=3.9*8.85e-14)
```

### 16.3.1 Creating the models

Solving for the Potential,  $\psi$ , we first create the solution variable.

```
###
### Create the Potential solution variable
###
node_solution(device=device, region=region, name="Potential")
```

In order to create the edge models, we need to be able to refer to Potential on the nodes on each edge.

```
###
### Creates the Potential@n0 and Potential@n1 edge model
###
edge_from_node_model(device=device, region=region, node_model="Potential")
```

We then create the `ElectricField` model with knowledge of `Potential` on each node, as well as the `EdgeInverseLength` of each edge. We also manually calculate the derivative of `ElectricField` with `Potential` on each node and name them `ElectricField:Potential@n0` and `ElectricField:Potential@n1`.

```
###
### Electric field on each edge, as well as its derivatives with respect to
### the potential at each node
###
edge_model(device=device, region=region, name="ElectricField",
            equation="(Potential@n0 - Potential@n1)*EdgeInverseLength")

edge_model(device=device, region=region, name="ElectricField:Potential@n0",
            equation="EdgeInverseLength")

edge_model(device=device, region=region, name="ElectricField:Potential@n1",
            equation="-EdgeInverseLength")
```

We create `DField` to account for the electric displacement field.

```
###
### Model the D Field
###
edge_model(device=device, region=region, name="DField",
            equation="Permittivity*ElectricField")

edge_model(device=device, region=region, name="DField:Potential@n0",
            equation="diff(Permittivity*ElectricField, Potential@n0)")

edge_model(device=device, region=region, name="DField:Potential@n1",
            equation="-DField:Potential@n0")
```

The bulk equation is now created for the structure using the models and parameters we have previously defined.

```
###
### Create the bulk equation
###
equation(device=device, region=region, name="PotentialEquation",
          variable_name="Potential", edge_model="DField",
          variable_update="default")
```

### 16.3.2 Contact boundary conditions

We then create the contact models and equations. We use the Python for loop construct and variable substitutions to create a unique model for each contact, `contact1_bc` and `contact2_bc`.

```
###
### Contact models and equations
###
for c in ("contact1", "contact2"):
    contact_node_model(device=device, contact=c, name="%s_bc" % c,
                      equation="Potential - %s_bias" % c)

    contact_node_model(device=device, contact=c, name="%s_bc:Potential" % c,
                      equation="1")

    contact_equation(device=device, contact=c, name="PotentialEquation",
                    node_model="%s_bc" % c, edge_charge_model="DField")
```

In this example, the contact bias is applied through parameters named `contact1_bias` and `contact2_bias`. When applying the boundary conditions through circuit nodes, models with respect to their names and their derivatives would be required.

### 16.3.3 Setting the boundary conditions

```
###
### Set the contact
###
set_parameter(device=device, region=region, name="contact1_bias", value=1.0e-0)
set_parameter(device=device, region=region, name="contact2_bias", value=0.0)
```

```
###
### Solve
###
solve(type="dc", absolute_error=1.0, relative_error=1e-10, maximum_iterations=30)
```

```
###
### Print the charge on the contacts
###
for c in ("contact1", "contact2"):
    print("contact: %s charge: %1.5e"
          % (c, get_contact_charge(device=device, contact=c, equation=
→ "PotentialEquation")))
```

### 16.3.4 Running the simulation

We run the simulation and see the results.

```
capacitance> python cap1d.py
-----

DEVSIM

Version: Beta 0.01

Copyright 2009-2013 Devsim LLC
-----

contact2
(region: MyRegion)
(contact: contact1)
(contact: contact2)
Region "MyRegion" on device "MyDevice" has equations 0:10
Device "MyDevice" has equations 0:10
number of equations 11
Iteration: 0
  Device: "MyDevice" RelError: 1.000000e+00 AbsError: 1.000000e+00
    Region: "MyRegion" RelError: 1.000000e+00 AbsError: 1.000000e+00
      Equation: "PotentialEquation" RelError: 1.000000e+00 AbsError: 1.
      ↪ 000000e+00
Iteration: 1
  Device: "MyDevice" RelError: 2.77924e-16 AbsError: 1.12632e-16
    Region: "MyRegion" RelError: 2.77924e-16 AbsError: 1.12632e-16
      Equation: "PotentialEquation" RelError: 2.77924e-16 AbsError: 1.12632e-
      ↪ 16
contact: contact1 charge: 3.45150e-13
contact: contact2 charge: -3.45150e-13
```

Which corresponds to our expected result of  $3.451510^{-13}$  F/cm<sup>2</sup> for a homogenous capacitor.

## 16.4 2D Capacitor

This example is called `cap2d.py` and is located in the `examples/capacitance` directory distributed with DEVSIM. This file uses the same physics as the 1D example, but with a 2D structure. The mesh is built using the DEVSIM internal mesher. An air region exists with two electrodes in the simulation domain.

## 16.5 Defining the mesh

```

from devsim import *
device="MyDevice"
region="MyRegion"

xmin=-25
x1  =-24.975
x2  =-2
x3  =2
x4  =24.975
xmax=25.0

ymin=0.0
y1  =0.1
y2  =0.2
y3  =0.8
y4  =0.9
ymax=50.0

create_2d_mesh(mesh=device)
add_2d_mesh_line(mesh=device, dir="y", pos=ymin, ps=0.1)
add_2d_mesh_line(mesh=device, dir="y", pos=y1 , ps=0.1)
add_2d_mesh_line(mesh=device, dir="y", pos=y2 , ps=0.1)
add_2d_mesh_line(mesh=device, dir="y", pos=y3 , ps=0.1)
add_2d_mesh_line(mesh=device, dir="y", pos=y4 , ps=0.1)
add_2d_mesh_line(mesh=device, dir="y", pos=ymax, ps=5.0)

device=device
region="air"

add_2d_mesh_line(mesh=device, dir="x", pos=xmin, ps=5)
add_2d_mesh_line(mesh=device, dir="x", pos=x1 , ps=2)
add_2d_mesh_line(mesh=device, dir="x", pos=x2 , ps=0.05)
add_2d_mesh_line(mesh=device, dir="x", pos=x3 , ps=0.05)
add_2d_mesh_line(mesh=device, dir="x", pos=x4 , ps=2)
add_2d_mesh_line(mesh=device, dir="x", pos=xmax, ps=5)

add_2d_region(mesh=device, material="gas" , region="air", yl=ymin, yh=ymax,
↪xl=xmin, xh=xmax)
add_2d_region(mesh=device, material="metal", region="m1" , yl=y1 , yh=y2 ,
↪xl=x1 , xh=x4)
add_2d_region(mesh=device, material="metal", region="m2" , yl=y3 , yh=y4 ,
↪xl=x2 , xh=x3)

# must be air since contacts don't have any equations

```

(continues on next page)

(continued from previous page)

```

add_2d_contact(mesh=device, name="bot", region="air", material="metal", yl=y1,
↪yh=y2, xl=x1, xh=x4)
add_2d_contact(mesh=device, name="top", region="air", material="metal", yl=y3,
↪yh=y4, xl=x2, xh=x3)
finalize_mesh(mesh=device)
create_device(mesh=device, device=device)

```

## 16.6 Setting up the models

```

###
### Set parameters on the region
###
set_parameter(device=device, region=region, name="Permittivity", value=3.9*8.85e-
↪14)

###
### Create the Potential solution variable
###
node_solution(device=device, region=region, name="Potential")

###
### Creates the Potential@n0 and Potential@n1 edge model
###
edge_from_node_model(device=device, region=region, node_model="Potential")

###
### Electric field on each edge, as well as its derivatives with respect to
### the potential at each node
###
edge_model(device=device, region=region, name="ElectricField",
            equation="(Potential@n0 - Potential@n1)*EdgeInverseLength")

edge_model(device=device, region=region, name="ElectricField:Potential@n0",
            equation="EdgeInverseLength")

edge_model(device=device, region=region, name="ElectricField:Potential@n1",
            equation="-EdgeInverseLength")

###
### Model the D Field
###
edge_model(device=device, region=region, name="DField",
            equation="Permittivity*ElectricField")

```

(continues on next page)

(continued from previous page)

```

edge_model(device=device, region=region, name="DField:Potential@n0",
            equation="diff(Permittivity*ElectricField, Potential@n0)")

edge_model(device=device, region=region, name="DField:Potential@n1",
            equation="-DField:Potential@n0")

###
### Create the bulk equation
###
equation(device=device, region=region, name="PotentialEquation",
          variable_name="Potential", edge_model="DField",
          variable_update="default")

###
### Contact models and equations
###
for c in ("top", "bot"):
    contact_node_model(device=device, contact=c, name="%s_bc" % c,
                       equation="Potential - %s_bias" % c)

    contact_node_model(device=device, contact=c, name="%s_bc:Potential" % c,
                       equation="1")

    contact_equation(device=device, contact=c, name="PotentialEquation",
                     node_model="%s_bc" % c, edge_charge_model="DField")

###
### Set the contact
###
set_parameter(device=device, name="top_bias", value=1.0e-0)
set_parameter(device=device, name="bot_bias", value=0.0)

edge_model(device=device, region="m1", name="ElectricField", equation="0")
edge_model(device=device, region="m2", name="ElectricField", equation="0")
node_model(device=device, region="m1", name="Potential", equation="bot_bias;")
node_model(device=device, region="m2", name="Potential", equation="top_bias;")

solve(type="dc", absolute_error=1.0, relative_error=1e-10, maximum_iterations=30,
       solver_type="direct")

```

## 16.7 Fields for visualization

Before writing the mesh out for visualization, the `element_from_edge_model` is used to calculate the electric field at each triangle center in the mesh. The components are the `ElectricField_x` and `ElectricField_y`.

```
element_from_edge_model(edge_model="ElectricField", device=device, region=region)
print(get_contact_charge(device=device, contact="top", equation=
    ↪ "PotentialEquation"))
print(get_contact_charge(device=device, contact="bot", equation=
    ↪ "PotentialEquation"))

write_devices(file="cap2d.msh", type="devsim")
write_devices(file="cap2d.dat", type="tecplot")
```

## 16.8 Running the simulation

```
-----

DEVSIM

Version: Beta 0.01

Copyright 2009-2013 Devsim LLC

-----

Creating Region air
Creating Region m1
Creating Region m2
Adding 8281 nodes
Adding 23918 edges with 22990 duplicates removed
Adding 15636 triangles with 0 duplicate removed
Adding 334 nodes
Adding 665 edges with 331 duplicates removed
Adding 332 triangles with 0 duplicate removed
Adding 162 nodes
Adding 321 edges with 159 duplicates removed
Adding 160 triangles with 0 duplicate removed
Contact bot in region air with 334 nodes
Contact top in region air with 162 nodes
Region "air" on device "MyDevice" has equations 0:8280
Region "m1" on device "MyDevice" has no equations.
Region "m2" on device "MyDevice" has no equations.
```

(continues on next page)

(continued from previous page)

```

Device "MyDevice" has equations 0:8280
number of equations 8281
Iteration: 0
  Device: "MyDevice"  RelError: 1.000000e+00  AbsError: 1.000000e+00
    Region: "air"      RelError: 1.000000e+00  AbsError: 1.000000e+00
      Equation: "PotentialEquation"  RelError: 1.000000e+00  AbsError: 1.
↳ 000000e+00
Iteration: 1
  Device: "MyDevice"  RelError: 1.25144e-12  AbsError: 1.73395e-13
    Region: "air"      RelError: 1.25144e-12  AbsError: 1.73395e-13
      Equation: "PotentialEquation"  RelError: 1.25144e-12  AbsError: 1.73395e-
↳ 13
3.35017166004e-12
-3.35017166004e-12

```

A visualization of the results is shown in [Fig. 16.1](#).

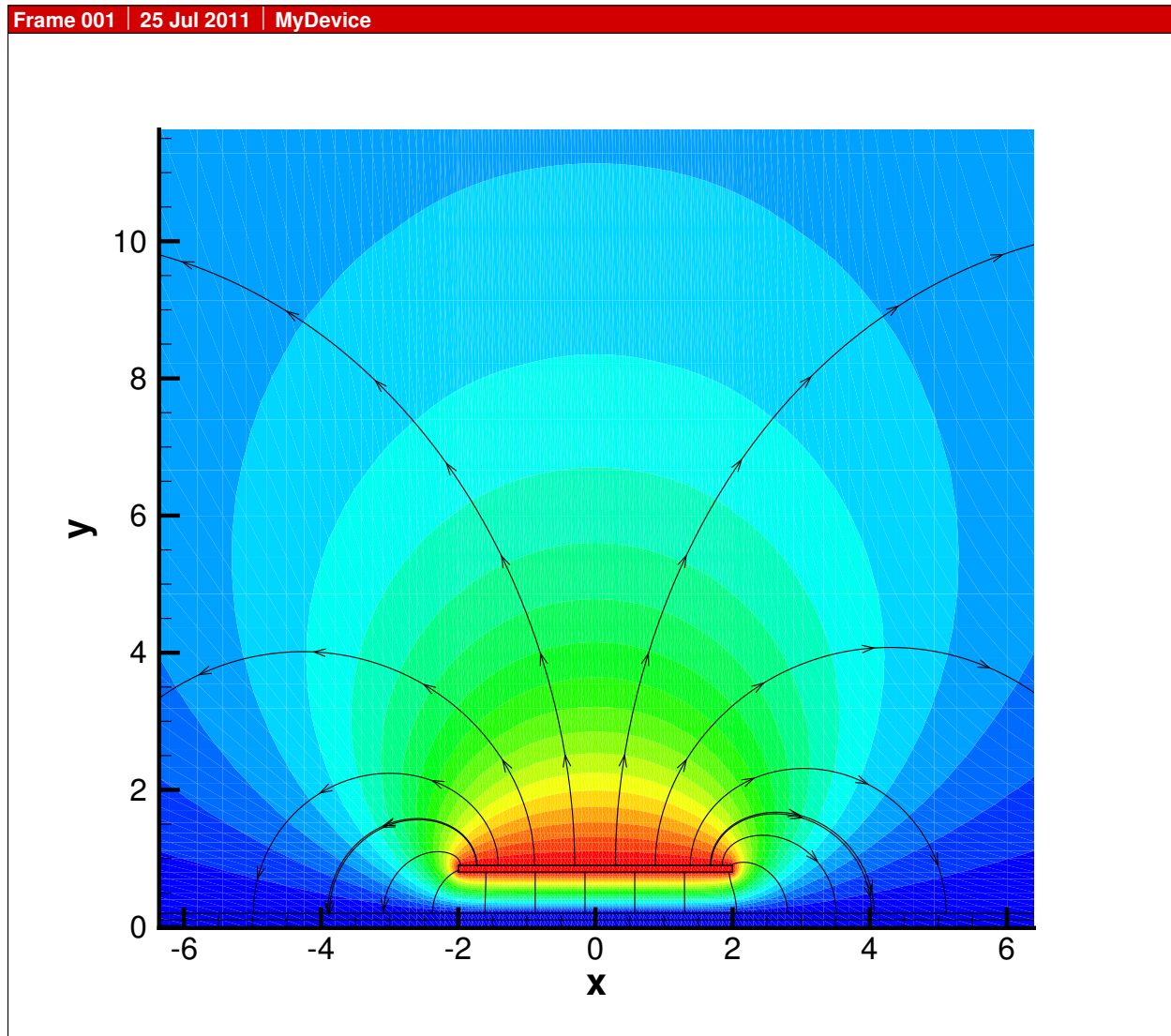


Fig. 16.1: Capacitance simulation result. The coloring is by Potential, and the stream traces are for components of ElectricField.



# Chapter 17

## Diode

The diode examples are located in the `examples/diode`. They demonstrate the use of packages located in the `python_packages` directory to simulate drift-diffusion using the Scharfetter-Gummel method [10].

### 17.1 1D diode

#### 17.1.1 Using the python packages

For these examples, python modules are provided to supply the appropriate model and parameter settings. A listing is shown in Table 17.1. The `devsim.python_packages` module is part of the distribution. The example files in the DEVSIM distribution set the path properly when loading modules.

Table 17.1: Python package files.

<code>model_create</code>	Creation of models and their derivatives
<code>ramp</code>	Ramping bias and automatic stepping
<code>simple_dd</code>	Functions for calculating bulk electron and hole current
<code>simple_physics</code>	Functions for setting up device physics

For this example, `diode_1d.py`, the following line is used to import the relevant physics.

```
from devsim import *  
from simple_physics import *
```

### 17.1.2 Creating the mesh

This creates a mesh  $10^{-5}$  cm long with a junction located at the midpoint. The name of the device is MyDevice with a single region names MyRegion. The contacts on either end are called top and bot.

```
def createMesh(device, region):
    create_1d_mesh(mesh="dio")
    add_1d_mesh_line(mesh="dio", pos=0, ps=1e-7, tag="top")
    add_1d_mesh_line(mesh="dio", pos=0.5e-5, ps=1e-9, tag="mid")
    add_1d_mesh_line(mesh="dio", pos=1e-5, ps=1e-7, tag="bot")
    add_1d_contact (mesh="dio", name="top", tag="top", material="metal")
    add_1d_contact (mesh="dio", name="bot", tag="bot", material="metal")
    add_1d_region (mesh="dio", material="Si", region=region, tag1="top", tag2=
    ↪ "bot")
    finalize_mesh(mesh="dio")
    create_device(mesh="dio", device=device)

device="MyDevice"
region="MyRegion"

createMesh(device, region)
```

## 17.2 Physical Models and Parameters

```
#####
##### Set parameters for 300 K
#####
SetSiliconParameters(device, region, 300)
set_parameter(device=device, region=region, name="taun", value=1e-8)
set_parameter(device=device, region=region, name="taup", value=1e-8)

#####
##### NetDoping
#####
CreateNodeModel(device, region, "Acceptors", "1.0e18*step(0.5e-5-x)")
CreateNodeModel(device, region, "Donors", "1.0e18*step(x-0.5e-5)")
CreateNodeModel(device, region, "NetDoping", "Donors-Acceptors")
print_node_values(device=device, region=region, name="NetDoping")

#####
##### Create Potential, Potential@n0, Potential@n1
#####
CreateSolution(device, region, "Potential")

#####
```

(continues on next page)

(continued from previous page)

```

#### Create potential only physical models
####
CreateSiliconPotentialOnly(device, region)

####
#### Set up the contacts applying a bias
####
for i in get_contact_list(device=device):
    set_parameter(device=device, name=GetContactBiasName(i), value=0.0)
    CreateSiliconPotentialOnlyContact(device, region, i)

####
#### Initial DC solution
####
solve(type="dc", absolute_error=1.0, relative_error=1e-12, maximum_iterations=30)

####
#### drift diffusion solution variables
####
CreateSolution(device, region, "Electrons")
CreateSolution(device, region, "Holes")

####
#### create initial guess from dc only solution
####
set_node_values(device=device, region=region,
    name="Electrons", init_from="IntrinsicElectrons")
set_node_values(device=device, region=region,
    name="Holes", init_from="IntrinsicHoles")

###
### Set up equations
###
CreateSiliconDriftDiffusion(device, region)
for i in get_contact_list(device=device):
    CreateSiliconDriftDiffusionAtContact(device, region, i)

###
### Drift diffusion simulation at equilibrium
###
solve(type="dc", absolute_error=1e10, relative_error=1e-10, maximum_
    iterations=30)

####
#### Ramp the bias to 0.5 Volts

```

(continues on next page)

(continued from previous page)

```
####  
v = 0.0  
while v < 0.51:  
    set_parameter(device=device, name=GetContactBiasName("top"), value=v)  
    solve(type="dc", absolute_error=1e10, relative_error=1e-10, maximum_  
↪ iterations=30)  
    PrintCurrents(device, "top")  
    PrintCurrents(device, "bot")  
    v += 0.1  
  
####  
#### Write out the result  
####  
write_devices(file="diode_1d.dat", type="tecplot")
```

### 17.2.1 Plotting the result

A plot showing the doping profile and carrier densities are shown in [Fig. 17.1](#). The potential and electric field distribution is shown in [Fig. 17.2](#). The current distributions are shown in [Fig. 17.3](#).

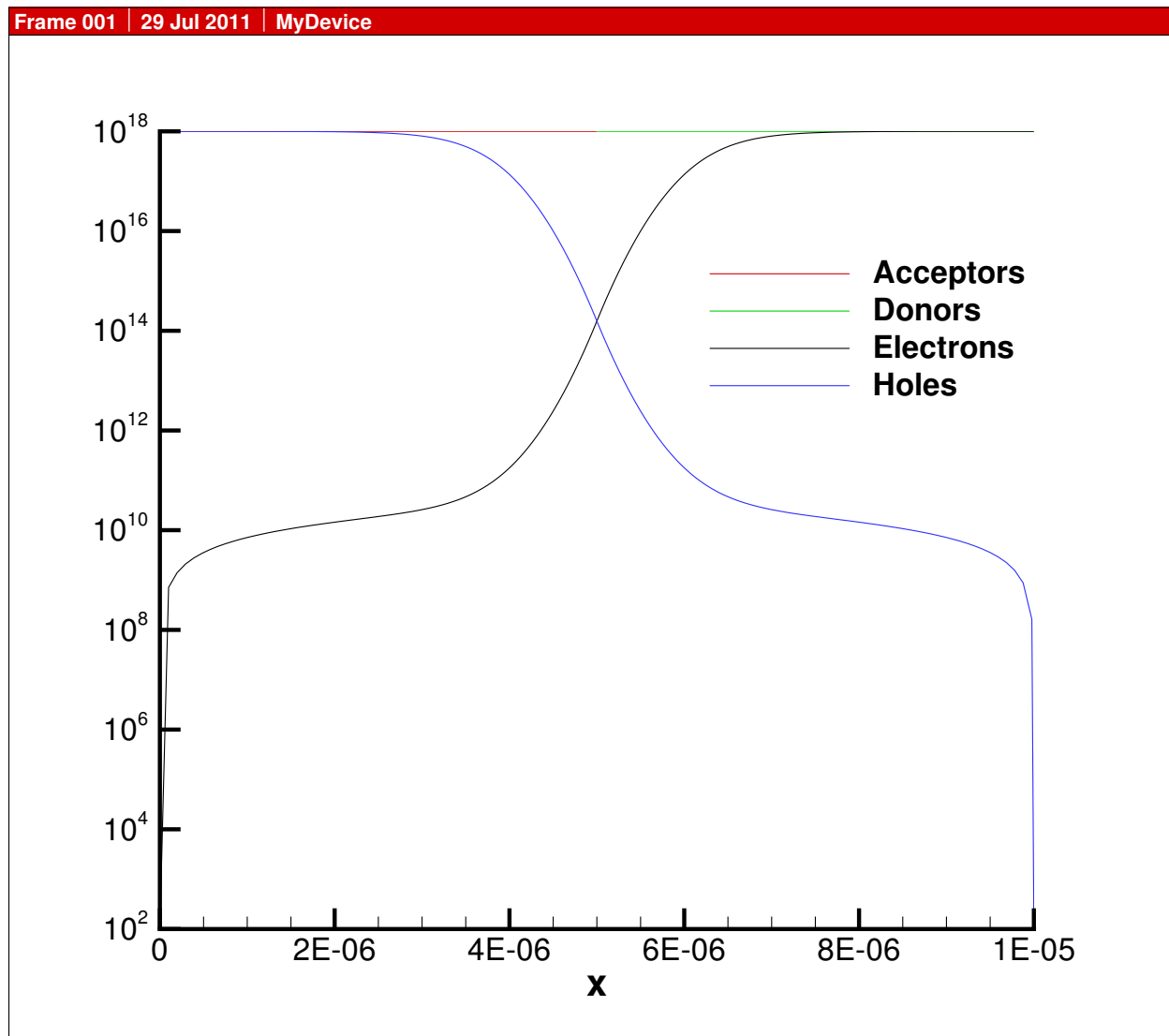


Fig. 17.1: Carrier density versus position in 1D diode.

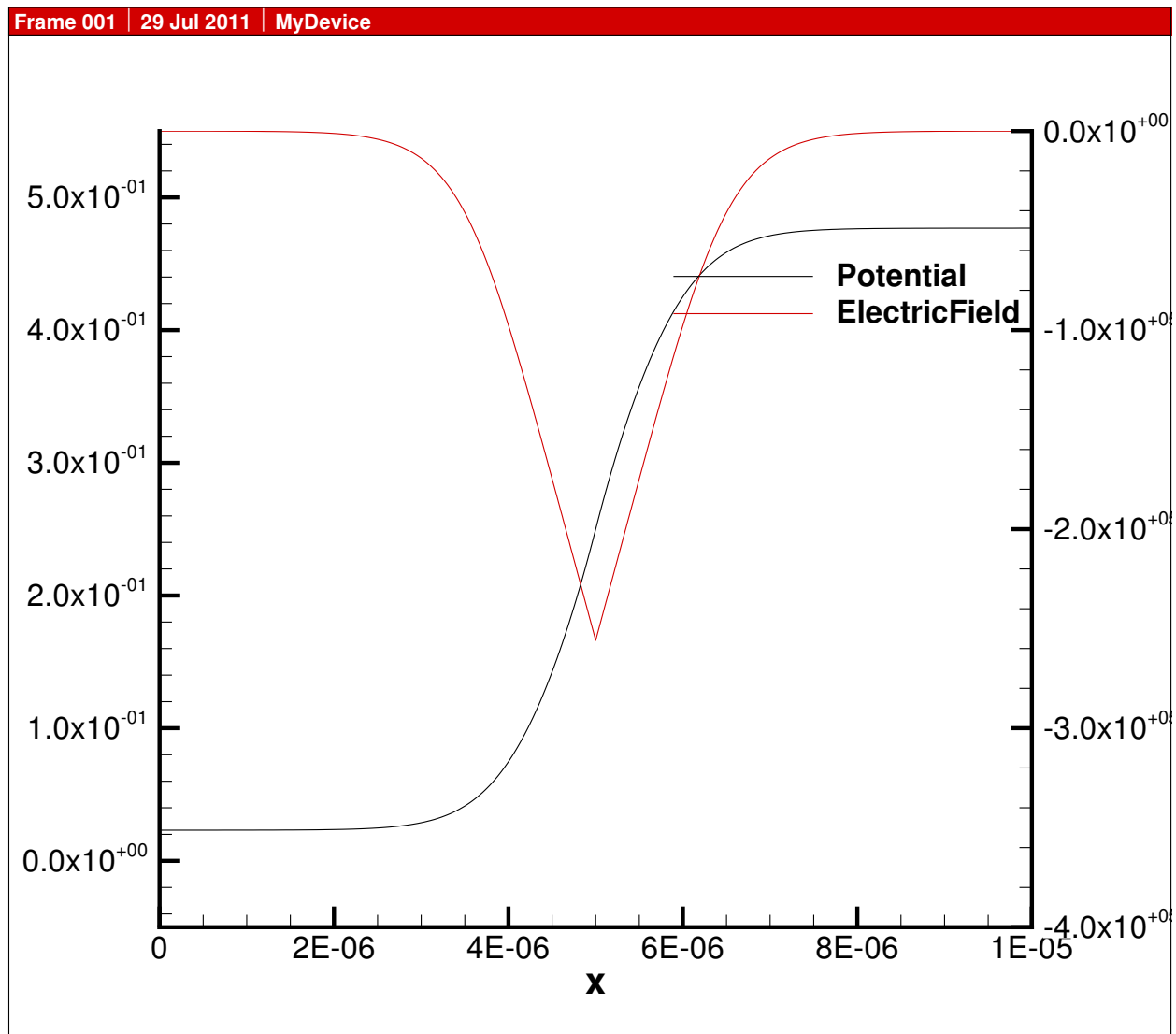


Fig. 17.2: Potential and electric field versus position in 1D diode.

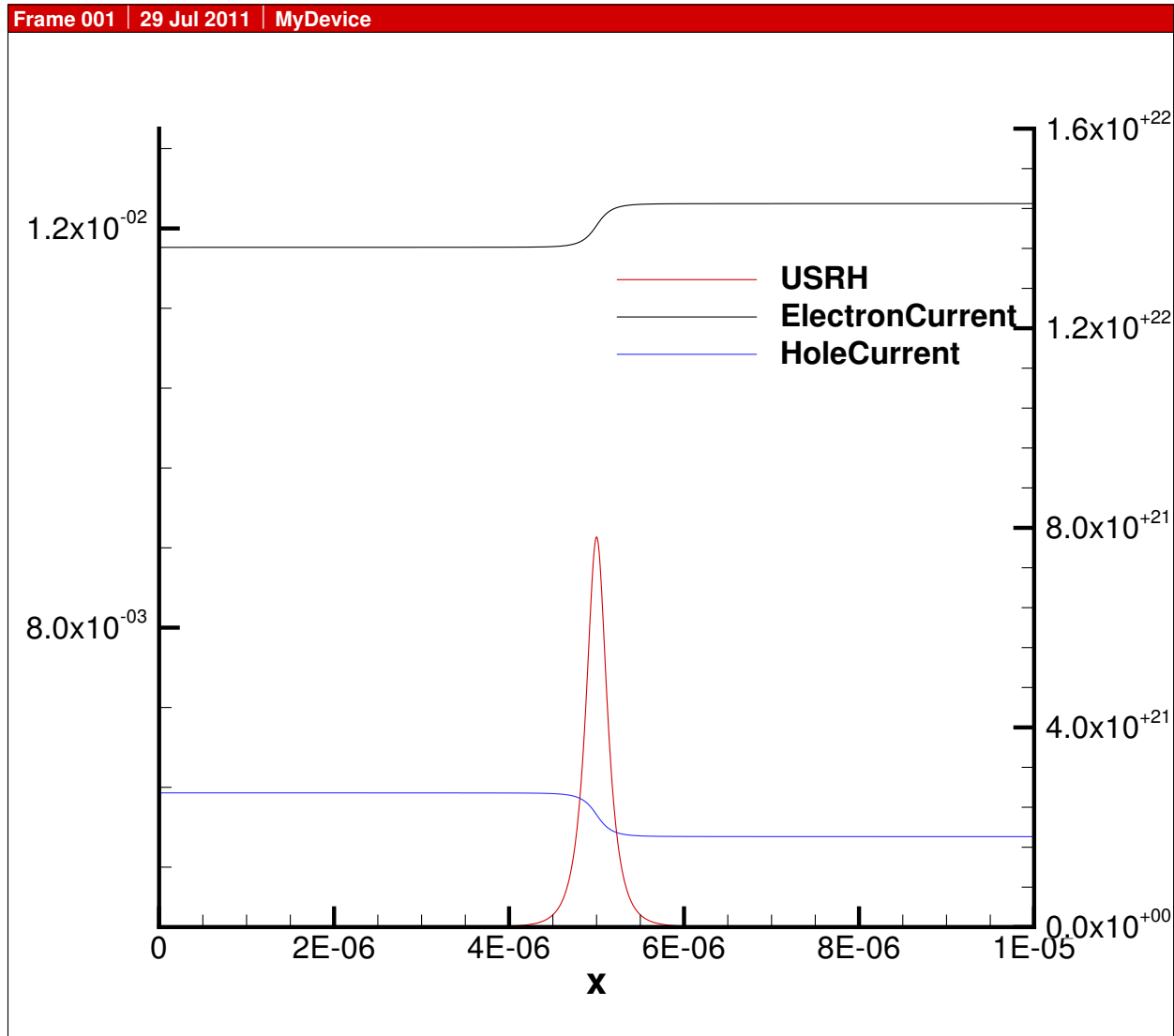


Fig. 17.3: Electron and hole current and recombination.



# Bibliography

- [1] Python Programming Language — Official Website. <http://www.python.org>.
- [2] James W. Demmel, Stanley C. Eisenstat, John R. Gilbert, Xiaoye S. Li, and Joseph W. H. Liu. A supernodal approach to sparse partial pivoting. *SIAM J. Matrix Analysis and Applications*, 20(3):720–755, 1999. doi:10.1137/S0895479895291765 (<https://doi.org/10.1137/S0895479895291765>).
- [3] C. Geuzaine and J.-F. Remacle. Gmsh: a three-dimensional finite element mesh generator with built-in pre- and post-processing facilities. *International Journal for Numerical Methods in Engineering*, 2009. doi:10.1002/nme.2579 (<https://doi.org/10.1002/nme.2579>).
- [4] W. B. Joyce and R. W. Dixon. Analytic approximations for the Fermi energy of an ideal Fermi gas. *Applied Physics Letters*, 31(5):354–356, 1977. doi:10.1063/1.89697 (<https://doi.org/10.1063/1.89697>).
- [5] Richard S. Muller, Theodore I. Kamins, and Mansun Chan. *Device Electronics for Integrated Circuits*. John Wiley & Sons, 3 edition, 2002.
- [6] John K. Ousterhout. Scripting: higher level programming for the 21st century. *IEEE Computer*, 31:23–30, 1998. doi:10.1109/2.660187 (<https://doi.org/10.1109/2.660187>).
- [7] Gernot Paasch and Susanne Scheinert. Charge carrier density of organics with Gaussian density of states: analytical approximation for the Gauss–Fermi integral. *Journal of Applied Physics*, 107(10):104501, 2010. doi:10.1063/1.3374475 (<https://doi.org/10.1063/1.3374475>).
- [8] Juan Sanchez and Qiusong Chen. Element Edge Based Discretization for TCAD Device Simulation. *TechRxiv*, 7 2021. doi:10.36227/techrxiv.14129081 (<https://doi.org/10.36227/techrxiv.14129081>).
- [9] Juan E. Sanchez and Qiusong Chen. Element edge based discretization for TCAD device simulation. *IEEE Transactions on Electron Devices*, 68(11):5414–5420, 2021. doi:10.1109/TED.2021.3094776 (<https://doi.org/10.1109/TED.2021.3094776>).
- [10] D. L. Scharfetter and H. K. Gummel. Large-signal analysis of a silicon Read diode oscillator. *IEEE Trans. Electron Devices*, ED-16(1):64–77, January 1969. doi:10.1109/T-ED.1969.16566 (<https://doi.org/10.1109/T-ED.1969.16566>).
- [11] Apache Software Foundation. Apache License, Version 2.0. URL: <http://www.apache.org/licenses/LICENSE-2.0.html>.



# Index

## A

`add_1d_contact()` (in module *devsim*), 97  
`add_1d_interface()` (in module *devsim*), 97  
`add_1d_mesh_line()` (in module *devsim*), 97  
`add_1d_region()` (in module *devsim*), 97  
`add_2d_contact()` (in module *devsim*), 97  
`add_2d_interface()` (in module *devsim*), 98  
`add_2d_mesh_line()` (in module *devsim*), 98  
`add_2d_region()` (in module *devsim*), 99  
`add_circuit_node()` (in module *devsim*), 87  
`add_db_entry()` (in module *devsim*), 94  
`add_gmsh_contact()` (in module *devsim*), 99  
`add_gmsh_interface()` (in module *devsim*), 99  
`add_gmsh_region()` (in module *devsim*), 100

## C

`circuit_alter()` (in module *devsim*), 87  
`circuit_element()` (in module *devsim*), 87  
`circuit_node_alias()` (in module *devsim*), 88  
`close_db()` (in module *devsim*), 94  
`contact_edge_model()` (in module *devsim*), 102  
`contact_equation()` (in module *devsim*), 89  
`contact_node_model()` (in module *devsim*), 103  
`create_1d_mesh()` (in module *devsim*), 100  
`create_2d_mesh()` (in module *devsim*), 100  
`create_contact_from_interface()` (in module *devsim*), 100  
`create_db()` (in module *devsim*), 94  
`create_device()` (in module *devsim*), 100  
`create_gmsh_mesh()` (in module *devsim*), 100  
`create_interface_from_nodes()` (in module *devsim*), 101  
`custom_equation()` (in module *devsim*), 89  
`cylindrical_edge_couple()` (in module *devsim*), 103  
`cylindrical_node_volume()` (in module *devsim*), 103  
`cylindrical_surface_area()` (in module *devsim*), 104

## D

`debug_triangle_models()` (in module *devsim*), 104  
`delete_circuit()` (in module *devsim*), 88  
`delete_contact_equation()` (in module *devsim*), 90  
`delete_device()` (in module *devsim*), 102  
`delete_edge_model()` (in module *devsim*), 104  
`delete_element_model()` (in module *devsim*), 105  
`delete_equation()` (in module *devsim*), 90  
`delete_interface_equation()` (in module *devsim*), 90  
`delete_interface_model()` (in module *devsim*), 105  
`delete_mesh()` (in module *devsim*), 102  
`delete_node_model()` (in module *devsim*), 105  
`devsim`  
    module, 87

## E

`edge_average_model()` (in module *devsim*), 105  
`edge_from_node_model()` (in module *devsim*), 106  
`edge_model()` (in module *devsim*), 106  
`edge_solution()` (in module *devsim*), 107  
`element_from_edge_model()` (in module *devsim*), 107  
`element_from_node_model()` (in module *devsim*), 108  
`element_model()` (in module *devsim*), 109  
`element_pair_from_edge_model()` (in module *devsim*), 109  
`element_solution()` (in module *devsim*), 111  
`equation()` (in module *devsim*), 90

## F

`finalize_mesh()` (in module *devsim*), 102

## G

[get\\_circuit\\_equation\\_number\(\)](#) (in module *devsim*), 88  
[get\\_circuit\\_node\\_list\(\)](#) (in module *devsim*), 88  
[get\\_circuit\\_node\\_value\(\)](#) (in module *devsim*), 88  
[get\\_circuit\\_solution\\_list\(\)](#) (in module *devsim*), 88  
[get\\_contact\\_charge\(\)](#) (in module *devsim*), 117  
[get\\_contact\\_current\(\)](#) (in module *devsim*), 117  
[get\\_contact\\_equation\\_command\(\)](#) (in module *devsim*), 91  
[get\\_contact\\_equation\\_list\(\)](#) (in module *devsim*), 91  
[get\\_contact\\_list\(\)](#) (in module *devsim*), 93  
[get\\_db\\_entry\(\)](#) (in module *devsim*), 94  
[get\\_device\\_list\(\)](#) (in module *devsim*), 93  
[get\\_dimension\(\)](#) (in module *devsim*), 95  
[get\\_edge\\_model\\_list\(\)](#) (in module *devsim*), 111  
[get\\_edge\\_model\\_values\(\)](#) (in module *devsim*), 111  
[get\\_element\\_model\\_list\(\)](#) (in module *devsim*), 112  
[get\\_element\\_model\\_values\(\)](#) (in module *devsim*), 112  
[get\\_element\\_node\\_list\(\)](#) (in module *devsim*), 93  
[get\\_equation\\_command\(\)](#) (in module *devsim*), 92  
[get\\_equation\\_list\(\)](#) (in module *devsim*), 92  
[get\\_equation\\_numbers\(\)](#) (in module *devsim*), 92  
[get\\_interface\\_equation\\_command\(\)](#) (in module *devsim*), 92  
[get\\_interface\\_equation\\_list\(\)](#) (in module *devsim*), 92  
[get\\_interface\\_list\(\)](#) (in module *devsim*), 93  
[get\\_interface\\_model\\_list\(\)](#) (in module *devsim*), 112  
[get\\_interface\\_model\\_values\(\)](#) (in module *devsim*), 112  
[get\\_material\(\)](#) (in module *devsim*), 95  
[get\\_matrix\\_and\\_rhs\(\)](#) (in module *devsim*), 117  
[get\\_mesh\\_list\(\)](#) (in module *devsim*), 102  
[get\\_node\\_model\\_list\(\)](#) (in module *devsim*), 112  
[get\\_node\\_model\\_values\(\)](#) (in module *devsim*), 112  
[get\\_parameter\(\)](#) (in module *devsim*), 95

[get\\_parameter\\_list\(\)](#) (in module *devsim*), 95  
[get\\_region\\_list\(\)](#) (in module *devsim*), 94

## I

[interface\\_equation\(\)](#) (in module *devsim*), 92  
[interface\\_model\(\)](#) (in module *devsim*), 113  
[interface\\_normal\\_model\(\)](#) (in module *devsim*), 113

## L

[load\\_devices\(\)](#) (in module *devsim*), 102

## M

[module](#)  
[devsim](#), 87

## N

[node\\_model\(\)](#) (in module *devsim*), 113  
[node\\_solution\(\)](#) (in module *devsim*), 114

## O

[open\\_db\(\)](#) (in module *devsim*), 96

## P

[print\\_edge\\_values\(\)](#) (in module *devsim*), 114  
[print\\_element\\_values\(\)](#) (in module *devsim*), 114  
[print\\_node\\_values\(\)](#) (in module *devsim*), 114

## R

[register\\_function\(\)](#) (in module *devsim*), 114  
[reset\\_devsim\(\)](#) (in module *devsim*), 94

## S

[save\\_db\(\)](#) (in module *devsim*), 96  
[set\\_circuit\\_node\\_value\(\)](#) (in module *devsim*), 88  
[set\\_edge\\_values\(\)](#) (in module *devsim*), 114  
[set\\_element\\_values\(\)](#) (in module *devsim*), 115  
[set\\_initial\\_condition\(\)](#) (in module *devsim*), 117  
[set\\_material\(\)](#) (in module *devsim*), 96  
[set\\_node\\_value\(\)](#) (in module *devsim*), 115  
[set\\_node\\_values\(\)](#) (in module *devsim*), 115  
[set\\_parameter\(\)](#) (in module *devsim*), 96  
[solve\(\)](#) (in module *devsim*), 118  
[syndiff\(\)](#) (in module *devsim*), 116

**V**

`vector_element_model()` (*in module devsim*),  
[116](#)

`vector_gradient()` (*in module devsim*), [116](#)

**W**

`write_devices()` (*in module devsim*), [102](#)