

# THE SCHUBERT ALGEBRA AND THE RING OF RC GRAPHS

MATTHEW J. SAMUEL

## 1. SOME PRELIMINARIES

### 1.1. Notation.

**Definition 1.1.1.** For a permutation  $v'$  such that  $v' \in S_n$ , define

$$\varphi_{i,n}(v')(j) = \begin{cases} v'(j) & \text{if } j < i \\ n+1 & \text{if } j = i \\ v'(j-1) & \text{if } i < j \leq n+1 \\ j & \text{if } j > n+1 \end{cases}$$

Now fix  $v \in S_n$  and  $i \geq 1$  an integer, we define a relation  $\searrow^i$  by declaring that  $v \searrow^i v'$  if

$$v \xRightarrow{i} \varphi_{i,n}(v')$$

Equivalently,  $v \searrow^i v'$  if whenever  $v \in S_n$  and  $n$  is minimal, we have that  $v$  satisfies the relation  $\xRightarrow{i}$  with respect to the permutation obtained from  $v'$  by inserting  $n+1$  at position  $i$ . We note that this concept was introduced by Bergeron and Sottile in [4].

If  $v \searrow^i v'$ , we define a set of integers  $Q_i(v', v)$  by

$$Q_i(v', v) = \{v(j) \mid j > i \text{ and } v'(j-1) = v(j)\}$$

Given the fact that any element of  $S_\infty$  fixes all but finitely many positive integers, it follows that  $Q_i(v', v)$  is a finite set.

We then define  $\mathcal{D}_i(v)$  to be all permutations  $v' \in S_\infty$  such that  $v \searrow^i v'$ . The permutations  $\mathcal{D}_i(v)$  arise when pulling a variable out of a Schubert polynomial and expressing the coefficients of the powers of this variable as Schubert polynomials in the remaining variables, as is done in [3], from which this definition essentially comes.

For a permutation  $v \in S_\infty$ , we define  $\uparrow v$  to be the permutation defined by

$$\uparrow v(i) = \begin{cases} v(i-1) + 1 & \text{if } i > 1 \\ 1 & \text{if } i = 1 \end{cases}$$

Recursively, we define  $\uparrow^k(v)$  to be  $\uparrow(\uparrow^{k-1}(v))$ .

For a permutation  $w$ , we define  $\mathbf{m}(w)$  to be the maximum right descent of  $w$ . That is

$$\mathbf{m}(w) = \max\{i \mid w(i) > w(i+1)\}$$

Define

$$\Pi(a \mid B) = \prod_{b \in B} (a - b)$$

**Proposition 1.1.2** (Special case of Pieri formula [9, Theorem 7.1]). *Suppose  $k \geq 1$  and  $u, w \in S_\infty$ . If  $u \xrightarrow{k} w$ , then*

$${}_{(u)}\partial_u^w \Pi(x_1 \mid y_{[k]}) = 0$$

*If  $u \xrightarrow{k} w$ , define*

$$Q = \{u(i) \mid i \leq k \text{ and } u(i) = w(i)\}$$

then

$${}_{(y)}\partial_u^w \Pi(x_1 \mid y_{[k]}) = \Pi(x_1 \mid y_Q)$$

*Proof.* This is simply a change of variables from the original theorem.  $\square$

The next proposition specializes, in the case of ordinary Schubert polynomial  $\mathfrak{S}_v(x)$ , to a formula that isolate a chosen index  $i$ : one can express  $\mathfrak{S}_v(x)$  as a sum of terms of the form  $x_i^p \mathfrak{S}_{v'}(x^{(i)})$ , thereby effectively extracting the variable  $x_i$  and leaving Schubert polynomials in the remaining variables [4, Theorem 5.1]. Proposition 1.1.3 is the double Schubert polynomial version of this, which, as far as we know, is new.

**Proposition 1.1.3.** *Let  $v \in S_\infty$  and let  $i > 0$  be an integer. Then we have*

$$\mathfrak{S}_v(x; y) = \sum_{v \xrightarrow{i} v'} \Pi(x_i \mid y_{Q_i(v', v)}) \mathfrak{S}_{v'}(x^{(i)}; y)$$

*Proof.* Suppose  $v \in S_n$ . We have

$$\mathfrak{S}_v(x; y) = {}_{(y)}\partial^{vw_0(n)}(\mathfrak{S}_{w_0(n)}(x; y))$$

This is equal to

$${}_{(y)}\partial^{vw_0(n)}(\mathfrak{S}_{s_{n+1-i} \cdots s_1 w_0(n)}(x^{(i)}; y) \Pi(x_i \mid y_{[n+1-i]}))$$

and, applying the Leibniz formula, is also equal to

$$\sum_{\substack{v' \in S_\infty \\ \ell(v' w_0(n) s_1 \cdots s_{n+1-i}) = \ell(w_0(n) s_1 \cdots s_{n+1-i}) - \ell(v')}} \mathfrak{S}_{v'}(x^{(i)}; y) {}_{(y)}\partial_{v' w_0(n) s_1 \cdots s_{n+1-i}}^{vw_0(n)} \Pi(x_i \mid y_{[n+1-i]})$$

By the restricted Pieri formula (Proposition 1.1.2), for this to be nonzero necessarily  $v' w_0(n) s_1 \cdots s_{n+1-i} \xrightarrow{n+1-i} v w_0(n)$ . We note that  $v' w_0(n) s_1 \cdots s_{n+1-i} \xrightarrow{n+1-i} v w_0(n)$  if and only if

$$v \xrightarrow{i} v' w_0(n) s_1 \cdots s_{n+1-i} w_0(n) = v' s_n s_{n-1} \cdots s_i$$

We have that  $v' s_n \cdots s_i$  is exactly  $\varphi_{i,n}(v')$  since  $v' \in S_n$ , so we require that

$$v \xrightarrow{i} \varphi_{i,n}(v')$$

so the sum is over all  $v' \in \mathcal{D}_i(v)$ .

Applying Proposition 1.1.2, we obtain that the result is equal to

$$\sum_{v' \in \mathcal{D}_i(v)} \Pi(x_i \mid y_{A(v', v)}) \mathfrak{S}_{v'}(x^{(i)}; y)$$

where  $A(v', v)$  is the set of all  $v w_0(n)(j)$  such that  $1 \leq j \leq n+1-i$  and  $v' w_0(n) s_1 \cdots s_{n+1-i}(j) = v w_0(n)(j)$ . These values are the same as at the indices that comprise the set of all  $1 \leq j \leq n+1-i$  such that

$$v'(n+2 - s_1 \cdots s_{n+1-i}(j)) = v(n+2 - j)$$

Applying the  $s_1 \cdots s_{n+1-i}$  to  $j$ , since  $1 \leq j \leq n+1-i$  we have that

$$s_1 \cdots s_{n+1-i}(j) = j+1$$

Hence we need

$$v'(n+2 - (j+1)) = v'(n+1 - j) = v(n+2 - j)$$

Replacing  $j$  with  $n+2 - p$ , the indices are the set of all  $p$  such that  $i < p \leq n+1$  and

$$v'(p-1) = v(p)$$

Thus  $A(v', v)$  is the set of all  $v(p)$  such that  $p > i$  and  $v'(p-1) = v(p)$ , which is exactly  $Q_i(v', v)$ , and we are done.  $\square$

## 2. THE SCHUBERT ALGEBRA AND ITS DUAL

**2.1. Definition.** We define a commutative algebra  $\mathcal{A}$  over the integers as follows. For each  $n$ , define  $\mathcal{A}_n$  to be the polynomial ring over  $\mathbb{Z}$  in the variables  $x_1, \dots, x_n$ . Then define

$$\mathcal{A} = \bigoplus_{n=0}^{\infty} \mathcal{A}_n$$

The multiplication within  $\mathcal{A}_n$  is as usually defined for the polynomial ring. However, if  $a \in \mathcal{A}_m$  and  $b \in \mathcal{A}_n$  with  $m \neq n$  and  $m, n > 0$ , then

$$ab = 0$$

Otherwise, the component for  $n = 0$  is identified with the coefficient ring. Note that the “identity element” for positive  $n$  is not an identity element of  $\mathcal{A}$  (we may sometimes refer to it as a “fat identity”).

Each  $\mathcal{A}_n$  has a basis consisting of elements  $x_a^{(n)}$ , where  $a$  is a sequence of  $n$  nonnegative integers, and the notation indicates that

$$x_a = x_1^{a_1} \cdots x_n^{a_n}$$

The direct sum therefore has a basis that can canonically be identified with union of these.

We define a coproduct  $\Delta : \mathcal{A} \rightarrow \mathcal{A} \otimes \mathcal{A}$  on the basis  $x_c^{(n)}$  by

$$\Delta(x_c^{(n)}) = \sum_{\substack{p+q=n \\ ab=c}} x_a^{(p)} \otimes x_b^{(q)}$$

where the equation  $ab = c$  indicates that  $a$  concatenated with  $b$  is equal to  $c$ . We also define a counit  $\varepsilon : \mathcal{A} \rightarrow \mathbb{Z}$  by  $\varepsilon(x_a^{(n)}) = 0$  unless  $n = 0$ .

**Lemma 2.1.1.** *With  $\Delta$  and  $\varepsilon$ ,  $\mathcal{A}$  is a coassociative, counital coalegebra.*

*Proof.* We have

$$\Delta(x_d^{(n)}) = \sum x_a^{(p)} \otimes x_c^{(q)}$$

Applying  $\Delta$  to either tensor factor results in

$$\sum x_a^{(p)} \otimes x_b^{(q)} \otimes x_c^{(r)}$$

The symmetry of this is exactly the coassociativity condition. Seeing that we may choose  $p = n$  or  $q = n$ , the definition of the counit gives us the result that  $\mathcal{A}$  is counital as well under  $\Delta$  and  $\varepsilon$ .  $\square$

**Lemma 2.1.2.**  *$\Delta : \mathcal{A} \rightarrow \mathcal{A} \otimes \mathcal{A}$  is a homomorphism of rings.*

*Proof.* This is where the condition that  $x_a^{(p)} x_b^{(q)} = 0$  unless  $p = q$  when both  $p, q > 0$  comes in. It ensures that only monomials of the same length have nonzero products and preserves the structure of the coproduct as a homomorphism of rings.  $\square$

**Lemma 2.1.3.**  *$\nabla : \mathcal{A} \otimes \mathcal{A} \rightarrow \mathcal{A}$  is a homomorphism of coalgebras.*

*Proof.*  $\square$

**Corollary 2.1.4.**  *$\mathcal{A}$  is a bialgebra over  $\mathbb{Z}$ .*

$\mathcal{A}$  is afforded a grading into finite dimensional components by observing that each  $\mathcal{A}_n$  itself is a graded ring with each homogeneous component being a finitely generated free module. Considering the pair  $(n, d)$ , where  $n$  is the number of variables and  $d$  is the degree, as a  $\mathbb{Z}^2$  grading, we may take the graded dual module  $\mathcal{D}$ , which, by virtue of the grading, is isomorphic as a free module to  $\mathcal{A}$ . We identify the dual basis element  $x_a^*$  with the sequence of nonnegative integers  $a$ . That is to say,

$$\langle a, x_b \rangle = \delta_{ab}$$

Inspection of the coproduct reveals that the product of  $a$  and  $b$  in  $\mathcal{D}$  is simply the concatenation  $ab$ . Hence  $\mathcal{D}$  is isomorphic to the free associative algebra on a countable set indexed by nonnegative integers.

$\mathcal{D}$  also has a coproduct compatible with its product, namely

$$c \mapsto \sum_{a+b=c} a \otimes b$$

Thus  $\mathcal{A}$  and  $\mathcal{D}$  are dual bialgebras.

Calling  $\mathcal{A}$  the “Schubert algebra” may seem unnecessarily grandiose, however the reason will become clear below.

**2.2. The Schubert basis.** In  $\mathcal{A}$ , each  $\mathcal{A}_n$  has a basis of Schubert polynomials  $\mathfrak{S}_u^{(n)}$ , where the largest right descent of  $u$  is at most  $n$ , ensuring that  $\mathfrak{S}_u(x)$  has at most  $n$  variables. Schubert polynomials limited to a specific number of variables have well-defined structure constants  $c_{u,v}^w$ , independent of  $n$ , given by

$$\mathfrak{S}_u^{(n)} \mathfrak{S}_v^{(n)} = \sum_w c_{u,v}^w \mathfrak{S}_w^{(n)}$$

These are known to be nonnegative integers, however except in special cases no positive combinatorial formula is known.

Schubert polynomials have nonnegative coefficients in terms of the  $x_a^{(n)}$  basis, for which many formulas are known. There is also a less well-understood unique expansion of the Schubert polynomials into sums of products of elementary symmetric polynomials with at most  $n$  variables.

**2.3. The elementary basis.** for all  $i > n$ , satisfying the additional restriction that  $\alpha_i \geq \alpha_{i+1}$  if  $i \geq n$ .

An  $n$ -elementary monomial is an element of the polynomial ring of the following form:

$$e_{\alpha_1}^1 \cdots e_{\alpha_n}^n e_{\alpha_{n+1}}^n \cdots e_{\alpha_m}^n$$

where  $\alpha$  is an  $n$ -elementary weak composition. Define  $\mathcal{E}_n$  to be the set of  $n$ -elementary monomials.

**Theorem 2.1.**  $\mathcal{E}_n$  forms a  $\mathbb{Z}$ -basis for  $\mathcal{A}_n$ , and  $\bigcup_n \mathcal{E}_n$  forms a basis for  $\mathcal{A}$ .

*Proof.* It is a theorem of Macdonald that the polynomial ring  $\mathbb{Z}[x_1, \dots, x_n]$  is a free module over  $\Lambda_n$  with basis the Schubert polynomials  $\mathfrak{S}_u(x)$  such that  $u \in S_n$ . These Schubert polynomials are uniquely expressed in terms of strict elementary symmetric monomials with fewer than  $n$  variables. Since  $\Lambda_n$  is a polynomial ring in the  $e_{i,n}$  by the fundamental theorem of elementary symmetric polynomials,  $\Lambda_n$  has a basis of monomials  $e_{\lambda,n}$  as  $\lambda$  ranges over all partitions with parts bounded by  $n$ . The multiplicative combination of these two bases is therefore a  $\mathbb{Z}$ -basis of  $\mathcal{A}_n$ . This is exactly the description of the monomials  $e_{\alpha}^n$  for  $\alpha$  an  $n$ -elementary weak composition.  $\square$

We can ask for transition formulas between the Schubert and the elementary basis. From elementary to Schubert, we may use Sottile’s Pieri formula. That is,

$$e_{\alpha}^n = \sum_{1 \xrightarrow{1,2,\dots,n} \alpha u} \mathfrak{S}_u^n$$

For the reverse transition, suppose we want to express  $\mathfrak{S}_w^n$  in the elementary basis. Let  $\lambda = \mu_n^*(w)$  and consider the double Schubert polynomial

$$\mathfrak{S}_{\lambda}(x; y) = \prod_i E_{\lambda_i}(x; y_i)$$

We have that

$$\mathfrak{S}_w(x; y) = \partial_y^{w\lambda^{-1}} \mathfrak{S}_{\lambda}(x; y)$$

Applying the Leibniz formula, this is

$$\sum_{u_0 \xrightarrow{1} u_1 \dots} \prod_i \partial_y^{u_i/u_{i-1}} E_{\lambda_i}(x; y_i)$$

It is possible to find a combinatorial formula for each factor in the product, keeping the  $y$  variables, but we only need the sign. We define  $\sigma_i(u_{i-1}, u_i)$  to be the number of indexes  $j < i$  such that  $u_{i-1}(j) \neq u_i(j)$ . Then we define

$$\sigma(P) = \sum_i \sigma_i(u_{i-1}, u_i)$$

Then we define

$$E_w^{\alpha; n} = \sum_{\substack{P: 1 \xrightarrow{\lambda} w\lambda^{-1} \\ \alpha(P) = \alpha}} (-1)^{|\lambda| - \ell(w) + \sigma(P)}$$

**Theorem 2.2.** *For each  $w$ , we have*

$$\mathfrak{S}_w^n = \sum_{\alpha} E_w^{\alpha;n} e_{\alpha}^n$$

These numbers are stable for fixed  $w$  as soon as the number of variables is at least as large as the value of  $n$  such that  $w \in S_n$ , and are well-studied but poorly understood.

**Example 2.3.1.** Let  $n = 5$  and let  $w$  be the permutation such that  $\mathfrak{c}(w) = (0, 2, 0, 2, 3)$ . Let  $\lambda = (5, 5, 5, 4, 3, 2, 1)$ . Then

$$\begin{aligned} \mathfrak{S}_w^n &= e_{(0,0,0,0,5,1,1)} - e_{(0,0,0,0,4,2,1)} + e_{(0,0,0,0,4,3)} - e_{(0,1,0,0,4,1,1)} + e_{(0,0,1,0,3,2,1)} \\ &\quad + e_{(0,1,0,0,5,1)} + e_{(0,1,0,0,3,3)} \end{aligned}$$

Suppose  $\alpha$  and  $\beta$  are weak compositions. We define  $\alpha \parallel_p \beta$  to be the weak composition defined by

$$\gamma_i = \begin{cases} \alpha_i & \text{if } i \leq p \\ \alpha_i + \beta_{i-p} & \text{if } i > p \end{cases}$$

**Theorem 2.3.**

$$\Delta(e_{\gamma}^n) = \sum_{\substack{\alpha \parallel_p \beta = \gamma \\ p+q=n}} e_{\alpha^{\bar{p}}}^p \otimes e_{\beta}^q$$

where  $\alpha$  ranges over all weak compositions such that  $\alpha^{\bar{p}}$  is  $p$ -elementary and  $\beta$  ranges over all  $q$ -elementary weak compositions.

**2.4. The Schubert-Schur and separated descents basis.**  $\mathcal{A}_n$  has a basis of the form  $S_{\lambda,u}^n = s_{\lambda}(x_1, \dots, x_n) \mathfrak{S}_u(x)$ , where  $u \in S_n$  and  $s_{\lambda}$  is the Schur polynomial corresponding to  $\lambda$  in  $\Lambda_n$ . This is called the *Schubert-Schur* basis. There is a generalization that this is an easy special case of that can be described as follows.

Let  $K_{u,v;k}^n = \mathfrak{S}_u(x_1, \dots, x_n) \mathfrak{S}_v(x_1, \dots, x_{k-1})$ , where  $v \in S_k$  and  $u$  is a permutation such that  $\ell(us_i) > \ell(u)$  for all  $i < k$ . We will call this the *separated descents basis* for the descent  $k$ .

**Theorem 2.4.** *For fixed  $k$ ,  $K_{u,v;k}^n$  form a basis of  $\mathcal{A}_n$  for all  $n \geq k$ .*

*Proof.* First we show that these elements additively generate the subring. Note first that  $\mathcal{E}_n$  is a basis. Let  $e_{\alpha_1}^{\lambda_1} \cdots e_{\alpha_m}^{\lambda_m} \in \mathcal{E}_n$ . Let  $j$  be the index such that  $\lambda_j = k$ . Let

$$P = \prod_{i=1}^j e_{\alpha_i}^{\lambda_i}$$

and let

$$Q = \prod_{i=j+1}^m e_{\alpha_i}^{\lambda_i}$$

By the fact that  $\lambda_{i-1} = \lambda_i + 1$  for all  $i > j$ , it follows that

$$Q = \sum c_v \mathfrak{S}_v(x)$$

for integers  $c_v$  with  $v \in S_k$ . Given the fact that  $P$  is symmetric in  $x_1, \dots, x_k$ , it can be shown that

$$P = \sum d_u \mathfrak{S}_u(x)$$

for integers  $d_u$  and permutations  $u \in S_{\infty}$  with  $\ell(us_i) > \ell(u)$  for all  $i < k$ . Thus the  $n$ -elementary monomial can be expressed as

$$PQ = \sum c_u d_v \mathfrak{S}_u(x_1, \dots, x_n) \mathfrak{S}_v(x_1, \dots, x_{k-1})$$

Since the  $n$ -elementary monomials form a basis, this proves that  $K_{u,v;k}^n$  spans  $\mathcal{A}_n$ .

To prove independence, first note that if

$$\sum_u c_u K_{u,1;k}^n = \sum_u c_u \mathfrak{S}_u(x) = 0$$

then  $c_u = 0$  for all  $u$  by independence of Schubert polynomials. Assume the inductive hypothesis that for some  $m > 0$  we have that if

$$\sum_u c_{uv} K_{u,v;k}^n = 0$$

and for all  $v$  in the sum with  $\ell(v) \geq m$  we have  $c_{uv} = 0$ , then  $c_{uv} = 0$  for all  $u$  and  $v$ . For a sum with possibly nonzero terms such that  $\ell(v) = m$  at most, suppose

$$\sum_{u,v} c_{u,v} K_{u,v;k}^n = 0$$

Let  $i$  be a positive integer. Then by applying the divided difference  $\partial^{s_i}$  we see that

$$\sum_{u,v} c_{u,v} K_{u,vs_i;k}^n = 0$$

for all  $v$  with  $\ell(vs_i) < \ell(v)$ . In particular, the maximum length with a possibly nonzero coefficient has decreased by at least 1. By the inductive hypothesis, all terms in this sum are 0, hence  $c_{uv} = 0$  for all  $u$  and  $v$  with  $\ell(vs_i) < \ell(v)$ . Iterating over all  $i$ , we have the result.  $\square$

For transition coefficients, expressing  $K_{u,v;k}^n$  in terms of Schubert polynomials is “easy” and combinatorially known to have nonnegative coefficients. While positive formulas are known, their discovery is quite recent.

Expressing the Schubert basis in terms of  $K_{u,v;k}^n$  can be done as follows.

Recall we can express  $\mathfrak{S}_w^n$  as

$$\mathfrak{S}_w^n = \sum_{\alpha} E_w^{\alpha;n} e_{\alpha}^n$$

To transition to the basis  $K_{u,v;k}^n$ , let  $a$  be the index such that  $\lambda_a = k$ . Then

$$\mathfrak{S}_w^n = \sum_{\alpha} E_w^{\alpha;n} \left( \prod_{i=1}^a e_{\alpha_i, \lambda_i} \right) \left( \prod_{j=a+1}^{\ell(\lambda)} e_{\alpha_j, \lambda_j} \right)$$

These products can be expanded with the Pieri formula as

$$\mathfrak{S}_w^n = \sum_{\alpha} E_w^{\alpha;n} c_{\alpha', \lambda'}^u c_{\alpha'', \lambda''}^v K_{u,v;k}^n$$

**Example 2.4.1.** Let  $n = 5$ , let  $k = 3$ , and let  $w$  be the permutation such that  $\mathfrak{c}(w) = (0, 2, 0, 2, 3)$ . Then

$$\mathfrak{S}_w^n = K_{12468357, 132; 3}^5 - K_{13468257, 1; 3}^5$$

If instead we let  $k = 4$ , we obtain

$$\mathfrak{S}_w^n = -K_{124563, 132; 4}^5 + K_{1246735, 132; 4}^5 + K_{134562, 1; 4}^5 - K_{1346725, 1; 4}^5 + K_{234561, 132; 4}^5$$

**2.5. The dual algebra.** We examine the graded dual algebra  $\mathcal{D}$  more closely now. This is a graded ring generated by countably many elements that we denote by  $[i]$ , where  $i$  is a nonnegative integer. The product, as mentioned previously, is concatenation of sequences. Thus

$$[a_1 \cdots a_p][b_1 \cdots b_q] = [a_1 \cdots a_p b_1 \cdots b_q]$$

It is not hard to see that  $\mathcal{D}$  is a free algebra on these generators. Thus the set of sequences  $[a_1 \cdots a_n]$  forms a  $\mathbb{Z}$ -basis for  $\mathcal{D}$ . We may realize this as the dual of  $\mathcal{A}$  by declaring that

$$\langle [a_1 \cdots a_n], x_1^{b_1} \cdots x_n^{b_n} \rangle = \prod_i \delta_{a_i, b_i}$$

We have a  $\mathbb{Z} \times \mathbb{Z}$  grading such that

$$\deg([a_1 \cdots a_n]) = (n, -a_1 - a_2 \cdots - a_n)$$

The set of elements such that  $\deg(a) = (n, -)$  is  $\mathcal{D}_n$ , dual as a graded module to  $\mathcal{A}_n$ .

**2.6. The dual Schubert basis.** There is a basis  $\Xi_u^n$  dual to the Schubert basis for  $\mathcal{D}_n$ . Specifically, with the unique pairing  $\langle -, - \rangle : \mathcal{D} \times \mathcal{A} \rightarrow \mathbb{Z}$  such that

$$\langle \alpha, x_\beta \rangle = \delta_{\alpha\beta}$$

we define  $\Xi_u^n$  to be the unique basis of  $\mathcal{D}_n$  such that

$$\langle \Xi_u^n, \mathfrak{S}_v^n \rangle = \delta_{uv}$$

We characterize it with an explicit formula.

**Theorem 2.5.** *For each permutation  $u$  and integer  $n$  with  $\ell(us_i) > \ell(u)$  for all  $i > n$  we have the equation*

$$\Xi_u^n = \sum_{\ell(\alpha)=n} E_{u\mu^{-1}}^{\mathfrak{c}(\mu)-\alpha, \mathfrak{c}(\mu)} \alpha$$

where  $\mu$  is any strict dominant permutation such that  $0 \neq \mathfrak{c}_n(\mu) \geq \ell(u)$  and  $\mathfrak{c}_{n+1}(\mu) = 0$ .

*Proof.* By definition, the coefficient of  $\alpha$  in  $\Xi_u^n$  is the coefficient of  $\mathfrak{S}_u^n$  in  $x_\alpha$ . This can be derived from the Cauchy formula for double Schubert polynomials. Note that for any permutation  $\mu$  as laid out in the statement of the theorem,  $\ell(u\mu^{-1}) = \ell(\mu) - \ell(u)$ . Thus,

$$\partial_y^{u\mu^{-1}} \mathfrak{S}_\mu(x; -y) = \mathfrak{S}_u(x; -y)$$

We have that

$$\mathfrak{S}_\mu(x; -y) = \sum_u \mathfrak{S}_u(x) \mathfrak{S}_{u\mu^{-1}}(y)$$

Expressing the second factor in the  $e_{\alpha, \lambda}(y)$  basis, we have

$$\mathfrak{S}_\mu(x; -y) = \sum_{u, \alpha} \mathfrak{S}_u(x) E_{u\mu^{-1}}^{\mathfrak{c}(\mu)-\alpha, \mathfrak{c}(\mu)} e_{\mathfrak{c}(\mu)-\alpha, \mathfrak{c}(\mu)}(y)$$

An alternative expression for  $\mathfrak{S}_\mu(x; -y)$  is

$$\mathfrak{S}_\mu(x; -y) = \sum_\alpha x_\alpha e_{\mathfrak{c}(\mu)-\alpha, \mathfrak{c}(\mu)}(y)$$

from which we see that the coefficient is correct. □

This is not stable for fixed  $u$  as  $n$  increases, and this is expected.

**Example 2.6.1.** Suppose  $w = [1, 4, 5, 2, 3]$ . Then

$$\Xi_w^3 = [022] - [013]$$

If we chose  $[1, 3, 5, 7, 2, 4, 6]$  instead, we have

$$\Xi_{1357246} = [0015] - [0033] - [0114] + [0123]$$

For  $w = [4, 2, 7, 1, 3, 5, 6]$ ,

$$\Xi_{4271356}^3 = -[026] + [035] + [125] - [134] + [206] - [215] - [305] + [314]$$

**Lemma 2.6.2.** *Let  $w \in S_\infty$  and let  $n \geq \mathfrak{m}(w)$ . Then*

$$\Xi_w^n = [\mathfrak{c}_1(w), \dots, \mathfrak{c}_n(w)] + \sum_{a <_{lex} \mathfrak{c}(w)} c_a[a]$$

where the sum is over sequences of nonnegative integers  $a$  of length  $n$  that are lexicographically less than  $\mathfrak{c}(w)$ .

*Proof.* Write

$$\alpha = \sum c_{\alpha, w} \Xi_w^n$$

Then for each  $w$  we have that  $\alpha \geq \mathfrak{c}(w)$  in lexicographical order, due to the fact that  $x^{\mathfrak{c}(w)}$  is the lexicographically minimal monomial in  $\mathfrak{S}_w(x)$ , with a coefficient of exactly 1. We thus have that the word basis is lower triangular in the Schubert basis, and vice versa. Since the coefficient of  $x^{\mathfrak{c}(w)}$  in  $\mathfrak{S}_w(x)$  is 1, the result follows. □

**Lemma 2.6.3.** *Let  $u, v \in S_\infty$  and  $p, q > 0$  be integers. Write*

$$\Xi_u^p \Xi_v^q = \sum_w d_{u,v}^w(p, q) \Xi_w^{p+q}$$

*Then for each  $u, v, w$  the coefficient  $d_{u,v}^w(p, q)$  is the coefficient of  $\mathfrak{S}_u(x_1, \dots, x_p) \mathfrak{S}_v(x_{p+1}, \dots, x_{p+q})$  in the expansion of  $\mathfrak{S}_w(x_1, \dots, x_{p+q})$  in terms of the basis of products of Schubert polynomials in  $x_1, \dots, x_p$  and Schubert polynomials in  $x_{p+1}$  onward.*

*Proof.* This is true by examination of the definition of the coproduct of  $\mathcal{A}$ , since this is the coefficient of  $\mathfrak{S}_u^p \otimes \mathfrak{S}_v^q$  in the coproduct of  $\mathfrak{S}_w^{p+q}$ .  $\square$

Thus the product structure of  $\mathcal{D}$  encodes splitting of the Schubert polynomial into two sets of variables. In particular,

**Lemma 2.6.4.** *Let  $a \geq 0$  be an integer and  $w \in S_\infty$ . Then we have*

$$[a] \cdot \Xi_w^n = \sum_{\substack{w' \in \mathcal{D}_1(w') \\ \ell(w, w') = a}} \Xi_{w'}^{n+1}$$

We also have

**Lemma 2.6.5.** *Let  $a \geq 0$  be an integer and  $w \in S_\infty$ . Then we have*

$$\Xi_w^n \cdot [a] = \sum_{\substack{w' \in \mathcal{D}_{n+1}(w') \\ \ell(w, w') = a}} \Xi_{w'}^{n+1}$$

This is actually sufficient to get a full LR rule.

**Lemma 2.6.6.** *Suppose*

$$\Xi_u^p \Xi_v^q = \sum_w d_{u,v}^w(p, q) \Xi_w^{p+q}$$

*Then*

$$\Xi_u^p [0]^q = \sum_{\ell(w(\uparrow^p v)^{-1}) = \ell(w) - \ell(v)} d_{u,v}^w(p, q) \Xi_{w(\uparrow^p v)^{-1}}^{p+q}$$

**Theorem 2.6.** *Let  $u, v \in S_\infty$  and  $p, q > 0$  be integers. Write*

$$\Xi_u^p \Xi_v^q = \sum_w d_{u,v}^w(p, q) \Xi_w^{p+q}$$

*Then  $d_{u,v}^w(p, q) = 0$  unless  $\ell(w(\uparrow^p v)^{-1}) = \ell(w) - \ell(v)$  and  $\ell(u) + \ell(v) = \ell(w)$ . If these conditions are satisfied, then  $d_{u,v}^w(p, q)$  is the number of sequences of permutations  $(\sigma_0, \dots, \sigma_q)$  such that  $\sigma_0 = w(\uparrow^p v)^{-1}$ ,  $\sigma_q = u$ , and*

$$\sigma_0 \searrow^{p+q} \sigma_2 \searrow^{p+q-1} \cdots \searrow^{p+1} \sigma_q$$



**Example 2.6.7.** What is most interesting in this construction is the coproduct. Consider our example  $w = [4, 2, 7, 1, 3, 5, 6]$ . Using the word basis, it is a triviality to compute the coproduct  $\Delta(\Xi_w^3)$ :

$$\begin{aligned}
&= -[000] \otimes [026] + [000] \otimes [035] + [000] \otimes [125] - [000] \otimes [134] + [000] \otimes [206] - [000] \otimes [215] \\
&\quad - [000] \otimes [305] + [000] \otimes [314] - [001] \otimes [025] + [001] \otimes [034] + [001] \otimes [124] - [001] \otimes [133] \\
&\quad + [001] \otimes [205] - [001] \otimes [214] - [001] \otimes [304] + [001] \otimes [313] - [002] \otimes [024] + [002] \otimes [033] \\
&\quad + [002] \otimes [123] - [002] \otimes [132] + [002] \otimes [204] - [002] \otimes [213] - [002] \otimes [303] + [002] \otimes [312] \\
&\quad - [003] \otimes [023] + [003] \otimes [032] + [003] \otimes [122] - [003] \otimes [131] + [003] \otimes [203] - [003] \otimes [212] \\
&\quad - [003] \otimes [302] + [003] \otimes [311] - [004] \otimes [022] + [004] \otimes [031] + [004] \otimes [121] - [004] \otimes [130] \\
&\quad + [004] \otimes [202] - [004] \otimes [211] - [004] \otimes [301] + [004] \otimes [310] - [005] \otimes [021] + [005] \otimes [030] \\
&\quad + [005] \otimes [120] + [005] \otimes [201] - [005] \otimes [210] - [005] \otimes [300] - [006] \otimes [020] + [006] \otimes [200] \\
&\quad - [010] \otimes [016] + [010] \otimes [025] + [010] \otimes [115] - [010] \otimes [124] - [010] \otimes [205] + [010] \otimes [304] \\
&\quad - [011] \otimes [015] + [011] \otimes [024] + [011] \otimes [114] - [011] \otimes [123] - [011] \otimes [204] + [011] \otimes [303] \\
&\quad - [012] \otimes [014] + [012] \otimes [023] + [012] \otimes [113] - [012] \otimes [122] - [012] \otimes [203] + [012] \otimes [302] \\
&\quad - [013] \otimes [013] + [013] \otimes [022] + [013] \otimes [112] - [013] \otimes [121] - [013] \otimes [202] + [013] \otimes [301] \\
&\quad - [014] \otimes [012] + [014] \otimes [021] + [014] \otimes [111] - [014] \otimes [120] - [014] \otimes [201] + [014] \otimes [300] \\
&\quad - [015] \otimes [011] + [015] \otimes [020] + [015] \otimes [110] - [015] \otimes [200] - [016] \otimes [010] - [020] \otimes [006] \\
&\quad + [020] \otimes [015] + [020] \otimes [105] - [020] \otimes [114] - [021] \otimes [005] + [021] \otimes [014] + [021] \otimes [104] \\
&\quad - [021] \otimes [113] - [022] \otimes [004] + [022] \otimes [013] + [022] \otimes [103] - [022] \otimes [112] - [023] \otimes [003] \\
&\quad + [023] \otimes [012] + [023] \otimes [102] - [023] \otimes [111] - [024] \otimes [002] + [024] \otimes [011] + [024] \otimes [101] \\
&\quad - [024] \otimes [110] - [025] \otimes [001] + [025] \otimes [010] + [025] \otimes [100] - [026] \otimes [000] + [030] \otimes [005] \\
&\quad - [030] \otimes [104] + [031] \otimes [004] - [031] \otimes [103] + [032] \otimes [003] - [032] \otimes [102] + [033] \otimes [002] \\
&\quad - [033] \otimes [101] + [034] \otimes [001] - [034] \otimes [100] + [035] \otimes [000] + [100] \otimes [025] - [100] \otimes [034] \\
&\quad + [100] \otimes [106] - [100] \otimes [115] - [100] \otimes [205] + [100] \otimes [214] + [101] \otimes [024] - [101] \otimes [033] \\
&\quad + [101] \otimes [105] - [101] \otimes [114] - [101] \otimes [204] + [101] \otimes [213] + [102] \otimes [023] - [102] \otimes [032] \\
&\quad + [102] \otimes [104] - [102] \otimes [113] - [102] \otimes [203] + [102] \otimes [212] + [103] \otimes [022] - [103] \otimes [031] \\
&\quad + [103] \otimes [103] - [103] \otimes [112] - [103] \otimes [202] + [103] \otimes [211] + [104] \otimes [021] - [104] \otimes [030] \\
&\quad + [104] \otimes [102] - [104] \otimes [111] - [104] \otimes [201] + [104] \otimes [210] + [105] \otimes [020] + [105] \otimes [101] \\
&\quad - [105] \otimes [110] - [105] \otimes [200] + [106] \otimes [100] + [110] \otimes [015] - [110] \otimes [024] - [110] \otimes [105] \\
&\quad + [110] \otimes [204] + [111] \otimes [014] - [111] \otimes [023] - [111] \otimes [104] + [111] \otimes [203] + [112] \otimes [013] \\
&\quad - [112] \otimes [022] - [112] \otimes [103] + [112] \otimes [202] + [113] \otimes [012] - [113] \otimes [021] - [113] \otimes [102] \\
&\quad + [113] \otimes [201] + [114] \otimes [011] - [114] \otimes [020] - [114] \otimes [101] + [114] \otimes [200] + [115] \otimes [010] \\
&\quad - [115] \otimes [100] + [120] \otimes [005] - [120] \otimes [014] + [121] \otimes [004] - [121] \otimes [013] + [122] \otimes [003] \\
&\quad - [122] \otimes [012] + [123] \otimes [002] - [123] \otimes [011] + [124] \otimes [001] - [124] \otimes [010] + [125] \otimes [000] \\
&\quad - [130] \otimes [004] - [131] \otimes [003] - [132] \otimes [002] - [133] \otimes [001] - [134] \otimes [000] + [200] \otimes [006] \\
&\quad - [200] \otimes [015] - [200] \otimes [105] + [200] \otimes [114] + [201] \otimes [005] - [201] \otimes [014] - [201] \otimes [104] \\
&\quad + [201] \otimes [113] + [202] \otimes [004] - [202] \otimes [013] - [202] \otimes [103] + [202] \otimes [112] + [203] \otimes [003] \\
&\quad - [203] \otimes [012] - [203] \otimes [102] + [203] \otimes [111] + [204] \otimes [002] - [204] \otimes [011] - [204] \otimes [101] \\
&\quad + [204] \otimes [110] + [205] \otimes [001] - [205] \otimes [010] - [205] \otimes [100] + [206] \otimes [000] - [210] \otimes [005] \\
&\quad + [210] \otimes [104] - [211] \otimes [004] + [211] \otimes [103] - [212] \otimes [003] + [212] \otimes [102] - [213] \otimes [002] \\
&\quad + [213] \otimes [101] - [214] \otimes [001] + [214] \otimes [100] - [215] \otimes [000] - [300] \otimes [005] + [300] \otimes [014] \\
&\quad - [301] \otimes [004] + [301] \otimes [013] - [302] \otimes [003] + [302] \otimes [012] - [303] \otimes [002] + [303] \otimes [011] \\
&\quad - [304] \otimes [001] + [304] \otimes [010] - [305] \otimes [000] + [310] \otimes [004] + [311] \otimes [003] + [312] \otimes [002] \\
&\quad + [313] \otimes [001] + [314] \otimes [000]
\end{aligned}$$

Reexpressing this in the dual Schubert basis, e.g. with Lemma 2.6.4, we have

$$\begin{aligned}
&= 1 \otimes \Xi_{4271356}^3 + \Xi_{1243}^3 \otimes \Xi_{3271456}^3 + \Xi_{1243}^3 \otimes \Xi_{4172356}^3 + \Xi_{1243}^3 \otimes \Xi_{426135}^3 \\
&\quad + \Xi_{12534}^3 \otimes \Xi_{3172456}^3 + \Xi_{12534}^3 \otimes \Xi_{326145}^3 + \Xi_{12534}^3 \otimes \Xi_{416235}^3 + \Xi_{12534}^3 \otimes \Xi_{42513}^3 \\
&\quad + \Xi_{126345}^3 \otimes \Xi_{316245}^3 + \Xi_{126345}^3 \otimes \Xi_{32514}^3 + \Xi_{126345}^3 \otimes \Xi_{41523}^3 + \Xi_{126345}^3 \otimes \Xi_{4231}^3 \\
&\quad + \Xi_{1273456}^3 \otimes \Xi_{31524}^3 + \Xi_{1273456}^3 \otimes \Xi_{4132}^3 + \Xi_{1273456}^3 \otimes \Xi_{4213}^3 + \Xi_{132}^3 \otimes \Xi_{3271456}^3 \\
&\quad + \Xi_{132}^3 \otimes \Xi_{4172356}^3 + \Xi_{1342}^3 \otimes \Xi_{3172456}^3 + \Xi_{1342}^3 \otimes \Xi_{326145}^3 + \Xi_{1342}^3 \otimes \Xi_{416235}^3 \\
&\quad + \Xi_{13524}^3 \otimes \Xi_{2173456}^3 + 2\Xi_{13524}^3 \otimes \Xi_{316245}^3 + \Xi_{13524}^3 \otimes \Xi_{32514}^3 + \Xi_{13524}^3 \otimes \Xi_{41523}^3 \\
&\quad + \Xi_{136245}^3 \otimes \Xi_{216345}^3 + 2\Xi_{136245}^3 \otimes \Xi_{31524}^3 + \Xi_{136245}^3 \otimes \Xi_{3241}^3 + \Xi_{136245}^3 \otimes \Xi_{4132}^3 \\
&\quad + \Xi_{1372456}^3 \otimes \Xi_{21534}^3 + \Xi_{1372456}^3 \otimes \Xi_{3142}^3 + \Xi_{1372456}^3 \otimes \Xi_{321}^3 + \Xi_{1372456}^3 \otimes \Xi_{4123}^3 \\
&\quad + \Xi_{1423}^3 \otimes \Xi_{3172456}^3 + \Xi_{1432}^3 \otimes \Xi_{2173456}^3 + \Xi_{1432}^3 \otimes \Xi_{316245}^3 + \Xi_{14523}^3 \otimes \Xi_{216345}^3 \\
&\quad + \Xi_{14523}^3 \otimes \Xi_{31524}^3 + \Xi_{146235}^3 \otimes \Xi_{21534}^3 + \Xi_{146235}^3 \otimes \Xi_{3142}^3 + \Xi_{1472356}^3 \otimes \Xi_{2143}^3 \\
&\quad + \Xi_{1472356}^3 \otimes \Xi_{312}^3 + \Xi_{21}^3 \otimes \Xi_{2471356}^3 + \Xi_{21}^3 \otimes \Xi_{3271456}^3 + \Xi_{2143}^3 \otimes \Xi_{1472356}^3 \\
&\quad + \Xi_{2143}^3 \otimes \Xi_{2371456}^3 + \Xi_{2143}^3 \otimes \Xi_{246135}^3 + \Xi_{2143}^3 \otimes \Xi_{3172456}^3 + \Xi_{2143}^3 \otimes \Xi_{326145}^3 \\
&\quad + \Xi_{21534}^3 \otimes \Xi_{1372456}^3 + \Xi_{21534}^3 \otimes \Xi_{146235}^3 + \Xi_{21534}^3 \otimes \Xi_{2173456}^3 + \Xi_{21534}^3 \otimes \Xi_{236145}^3 \\
&\quad + \Xi_{21534}^3 \otimes \Xi_{24513}^3 + \Xi_{21534}^3 \otimes \Xi_{316245}^3 + \Xi_{21534}^3 \otimes \Xi_{32514}^3 + \Xi_{216345}^3 \otimes \Xi_{136245}^3 \\
&\quad + \Xi_{216345}^3 \otimes \Xi_{14523}^3 + \Xi_{216345}^3 \otimes \Xi_{216345}^3 + \Xi_{216345}^3 \otimes \Xi_{23514}^3 + \Xi_{216345}^3 \otimes \Xi_{2431}^3 \\
&\quad + \Xi_{216345}^3 \otimes \Xi_{31524}^3 + \Xi_{216345}^3 \otimes \Xi_{3241}^3 + \Xi_{2173456}^3 \otimes \Xi_{13524}^3 + \Xi_{2173456}^3 \otimes \Xi_{1432}^3 \\
&\quad + \Xi_{2173456}^3 \otimes \Xi_{21534}^3 + \Xi_{2173456}^3 \otimes \Xi_{2413}^3 + \Xi_{2173456}^3 \otimes \Xi_{3142}^3 + \Xi_{2173456}^3 \otimes \Xi_{321}^3 \\
&\quad + \Xi_{231}^3 \otimes \Xi_{3172456}^3 + \Xi_{2341}^3 \otimes \Xi_{316245}^3 + \Xi_{23514}^3 \otimes \Xi_{216345}^3 + \Xi_{23514}^3 \otimes \Xi_{31524}^3 \\
&\quad + \Xi_{236145}^3 \otimes \Xi_{21534}^3 + \Xi_{236145}^3 \otimes \Xi_{3142}^3 + \Xi_{2371456}^3 \otimes \Xi_{2143}^3 + \Xi_{2371456}^3 \otimes \Xi_{312}^3 \\
&\quad + \Xi_{2413}^3 \otimes \Xi_{2173456}^3 + \Xi_{2431}^3 \otimes \Xi_{216345}^3 + \Xi_{24513}^3 \otimes \Xi_{21534}^3 + \Xi_{246135}^3 \otimes \Xi_{2143}^3 \\
&\quad + \Xi_{2471356}^3 \otimes \Xi_{21}^3 + \Xi_{312}^3 \otimes \Xi_{1472356}^3 + \Xi_{312}^3 \otimes \Xi_{2371456}^3 + \Xi_{3142}^3 \otimes \Xi_{1372456}^3 \\
&\quad + \Xi_{3142}^3 \otimes \Xi_{146235}^3 + \Xi_{3142}^3 \otimes \Xi_{2173456}^3 + \Xi_{3142}^3 \otimes \Xi_{236145}^3 + \Xi_{31524}^3 \otimes \Xi_{1273456}^3 \\
&\quad + 2\Xi_{31524}^3 \otimes \Xi_{136245}^3 + \Xi_{31524}^3 \otimes \Xi_{14523}^3 + \Xi_{31524}^3 \otimes \Xi_{216345}^3 + \Xi_{31524}^3 \otimes \Xi_{23514}^3 \\
&\quad + \Xi_{316245}^3 \otimes \Xi_{126345}^3 + 2\Xi_{316245}^3 \otimes \Xi_{13524}^3 + \Xi_{316245}^3 \otimes \Xi_{1432}^3 + \Xi_{316245}^3 \otimes \Xi_{21534}^3 \\
&\quad + \Xi_{316245}^3 \otimes \Xi_{2341}^3 + \Xi_{3172456}^3 \otimes \Xi_{12534}^3 + \Xi_{3172456}^3 \otimes \Xi_{1342}^3 + \Xi_{3172456}^3 \otimes \Xi_{1423}^3 \\
&\quad + \Xi_{3172456}^3 \otimes \Xi_{2143}^3 + \Xi_{3172456}^3 \otimes \Xi_{231}^3 + \Xi_{321}^3 \otimes \Xi_{1372456}^3 + \Xi_{321}^3 \otimes \Xi_{2173456}^3 \\
&\quad + \Xi_{3241}^3 \otimes \Xi_{136245}^3 + \Xi_{3241}^3 \otimes \Xi_{216345}^3 + \Xi_{32514}^3 \otimes \Xi_{126345}^3 + \Xi_{32514}^3 \otimes \Xi_{13524}^3 \\
&\quad + \Xi_{32514}^3 \otimes \Xi_{21534}^3 + \Xi_{326145}^3 \otimes \Xi_{12534}^3 + \Xi_{326145}^3 \otimes \Xi_{1342}^3 + \Xi_{326145}^3 \otimes \Xi_{2143}^3 \\
&\quad + \Xi_{3271456}^3 \otimes \Xi_{1243}^3 + \Xi_{3271456}^3 \otimes \Xi_{132}^3 + \Xi_{3271456}^3 \otimes \Xi_{21}^3 + \Xi_{4123}^3 \otimes \Xi_{1372456}^3 \\
&\quad + \Xi_{4132}^3 \otimes \Xi_{1273456}^3 + \Xi_{4132}^3 \otimes \Xi_{136245}^3 + \Xi_{41523}^3 \otimes \Xi_{126345}^3 + \Xi_{41523}^3 \otimes \Xi_{13524}^3 \\
&\quad + \Xi_{416235}^3 \otimes \Xi_{12534}^3 + \Xi_{416235}^3 \otimes \Xi_{1342}^3 + \Xi_{4172356}^3 \otimes \Xi_{1243}^3 + \Xi_{4172356}^3 \otimes \Xi_{132}^3 \\
&\quad + \Xi_{4213}^3 \otimes \Xi_{1273456}^3 + \Xi_{4231}^3 \otimes \Xi_{126345}^3 + \Xi_{42513}^3 \otimes \Xi_{12534}^3 + \Xi_{426135}^3 \otimes \Xi_{1243}^3 \\
&\quad + \Xi_{4271356}^3 \otimes 1
\end{aligned}$$

Now we may ask: how do we interpret this?

**Observation 2.1.** *In the formula*

$$\Delta(\Xi_w^n) = \sum_{u,v} c_{u,v}^w \Xi_u^n \otimes \Xi_v^n$$

*the coefficients  $c_{u,v}^w$  are the structure constants of Schubert polynomials. That is, the entire multiplicative structure of Schubert polynomials is encoded in the coproduct.*

**Example 2.6.8.** Consider the term  $2 \Xi_{31524}^3 \otimes \Xi_{136245}^4$  in Example 2.6.7. This indicates that the structure constant  $c_{31524,136245}^{4271356} = 2$ . Indeed, we have

$$\begin{aligned} \mathfrak{S}_{31524}(x) \mathfrak{S}_{136245}(x) &= \mathfrak{S}_{32814567}(x) + \mathfrak{S}_{3471256}(x) + \mathfrak{S}_{356124}(x) + \mathfrak{S}_{41823567}(x) \\ &\quad + 2\mathfrak{S}_{4271356}(x) + \mathfrak{S}_{436125}(x) + \mathfrak{S}_{5172346}(x) + \mathfrak{S}_{526134}(x) \end{aligned}$$

which confirms that this is in fact the case.

**2.7. Generalization to double Schubert polynomials.** Consider the algebra  $\mathcal{A}[y]$ , where  $y$  is a similar infinite set of variables indexed by positive integers. As a ring, there is very little difference between  $\mathcal{A}[y]$  and  $\mathcal{A}$ , besides the change of coefficient ring. However, we consider  $\mathcal{A}[y]$  as a graded module over  $\mathbb{Z}[y]$  with the following decomposition:

$$\mathcal{A}[y] = \bigoplus_{n=0}^{\infty} (\mathbb{Z}[y] \otimes \mathcal{A}_n)$$

where the tensor product is over  $\mathbb{Z}$ .

There are some unfortunate technicalities here that result in the monomial basis not yielding a “good” dual algebra. However, we do have a basis of double Schubert polynomials  $\mathfrak{S}_w(x_1, \dots, x_n; y)$  for  $\mathcal{A}_n[y]$  as a module over  $\mathbb{Z}[y]$ , with precisely the same coproduct:

$$\Delta(\mathfrak{S}_w^r(x; y)) = \sum_{u,v} d_{u,v}^w(p, q; y) \mathfrak{S}_u^p(x; y) \otimes \mathfrak{S}_v^q(x; y)$$

where  $p + q = r$  and the coefficients  $d_{u,v}^w(p, q; y)$  are polynomials in the  $y$  variables. The nature of these coefficients is well known, and indeed we can provide a positive formula for them (in terms of the simple roots  $y_i - y_{i+1}$ ).

We take the dual of  $\mathcal{A}[y]$  as a graded module over  $\mathbb{Z}[y]$  by both length and base degree to obtain  $\mathcal{D}_y$ . This lends us a dual Schubert basis  $\Xi_w^n(y)$  as a module over  $\mathbb{Z}[y]$  defined by

$$\langle \Xi_u^n(y), \mathfrak{S}_v^n(x; y) \rangle = \delta_{u,v}$$

where the pairing is over  $\mathbb{Z}[y]$ .

In terms of the relation to double Schubert calculus, the analogy is complete. The computational aspects are less desirable; in particular, there is no analogous monomial basis to easily get a handle on the Schubert basis from first principles, though the structure constants are indeed understood through other methods.

**Theorem 2.7.** *Let  $u, v \in S_{\infty}$  and  $p, q > 0$  be integers. Write*

$$\Xi_u^p(y) \Xi_v^q(y) = \sum_w d_{u,v}^w(p, q; y) \Xi_w^{p+q}(y)$$

*Then  $d_{u,v}^w(p, q; y) = 0$  unless  $\ell(w(\uparrow^p v)^{-1}) = \ell(w) - \ell(v)$ . If that condition is satisfied, then  $d_{u,v}^w(p, q; y)$  is the sum over all sequences of permutations  $(\sigma_0, \dots, \sigma_q)$  such that  $\sigma_0 = w(\uparrow^p v)^{-1}$ ,  $\sigma_q = u$  and*

$$\sigma_0 \searrow^{p+q} \sigma_2 \searrow^{p+q-1} \cdots \searrow^{p+1} \sigma_q$$

*of the products*

$$\prod_{i=1}^q \prod_{a \in Q_{p+q+1-i}(\sigma_i, \sigma_{i-1})} (y_{p+q+1-i} - y_a)$$

**Example 2.7.1.** We have

$$\begin{aligned}
\Xi_{1243}^3(y)\Xi_{2314}^2(y) &= (\alpha_2 + 2\alpha_3 + \alpha_4 + \alpha_5)\Xi_{124653}^5(y) \\
&\quad + (\alpha_2 + 2\alpha_3 + 2\alpha_4 + \alpha_5)\Xi_{1236745}^5(y) \\
&\quad + (\alpha_2 + 2\alpha_3 + 2\alpha_4 + 2\alpha_5 + \alpha_6)\Xi_{1237546}^5(y) \\
&\quad + (\alpha_2 + 2\alpha_3 + 2\alpha_4 + 2\alpha_5 + \alpha_6)\Xi_{1245736}^5(y) \\
&\quad + (\alpha_3(\alpha_2 + \alpha_3) + (\alpha_4 + \alpha_5)(\alpha_2 + 2\alpha_3 + \alpha_4 + \alpha_5))\Xi_{1246735}^5(y) \\
&\quad + (\alpha_3(\alpha_2 + 2\alpha_3 + 2\alpha_4 + 2\alpha_5 + \alpha_6) \\
&\quad \quad + (\alpha_2 + \alpha_3 + \alpha_4 + \alpha_5)(\alpha_2 + \alpha_3 + \alpha_4 + \alpha_5 + \alpha_6))\Xi_{1247536}^5(y) \\
&\quad + (\alpha_2 + 2\alpha_3 + 2\alpha_4 + \alpha_5)(\alpha_2 + 2\alpha_3 + 2\alpha_4 + 2\alpha_5 + \alpha_6)\Xi_{1237645}^5(y) \\
&\quad + ((\alpha_2 + \alpha_3 + \alpha_4 + \alpha_5) \\
&\quad \quad (\alpha_3(\alpha_2 + 2\alpha_3 + 2\alpha_4 + 2\alpha_5 + \alpha_6) \\
&\quad \quad + (\alpha_4 + \alpha_5)(\alpha_2 + \alpha_3 + \alpha_4 + \alpha_5 + \alpha_6)))\Xi_{1247635}^5(y) \\
&\quad + \Xi_{1235746}^5(y) + \Xi_{123654}^5(y) + \Xi_{124563}^5(y)
\end{aligned}$$

There is, indeed, an alternative positive formula that we state here.

**Theorem 2.8.** Suppose  $w \in S_\infty$  and let  $\mu$  be a dominant permutation such that  $\ell(w\mu) = \ell(\mu) - \ell(w)$ . Let  $A = [p]$  and let  $B = [p+1, p+q]$ . Then

$$d_{u,v}^w(p, q; y) = c_{u\mu_A, v\mu_B}^{w\mu}(-y)$$

That is to say, fixing  $\mu$ , we have that  $d_{u,v}^w y = 0$  unless  $\ell(u\mu_A) = \ell(\mu_A) - \ell(u)$  and  $\ell(v\mu_B) = \ell(\mu_B) - \ell(v)$ , in which case

$$d_{u,v}^w(y) = c_{u\mu_A, v\mu_B}^{w\mu}(-y)$$

This is positive because  $u\mu_A$  and  $v\mu_B$  have separated descents in the direction computable by [9, Theorem 3.1].

### 3. THE RING OF BOUNDED RC GRAPHS

#### 3.1. The module of bounded RC graphs.

**Definition 3.1.1.** Let  $R \subseteq \mathbb{P} \times \mathbb{P}$  be a finite set. To each such set we associate an element  $w_R$  of  $S_\infty$  as follows. Given a pair  $(i, j)$  where  $i, j > 0$  are integers, define  $s(i, j) = s_{i+j-1}$ . Totally order the grid such that  $(i, j) < (a, b)$  if and only if  $i < a$  or  $i = a$  and  $j > b$  (in other words, lexicographical order, except that the order on the second coordinate is reversed). By this ordering, index  $R$  as  $r_1, r_2, \dots, r_m$  in increasing order. Then

$$w_R = s(r_1) \cdots s(r_m)$$

If  $\ell(w_R) = m$ , then we say that  $R$  is an *RC-graph*.

A *bounded RC-graph* is an RC-graph  $R$  together with a specified number of rows  $n \geq \max\{i : (i, j) \in R \text{ for some } j\}$  such that  $w_R$  has no right descent larger than  $n$ . The definition is as an ordered pair  $(R, n)$ , but it will be far more convenient to abuse notation and consider the number of rows a property of  $R$  itself. To denote the number of rows, we define the *height* of  $R$  to be  $\text{ht}(R) = n$ . A bounded RC graph has an associated weight vector  $\text{wt}(R)$  where  $\text{wt}_i(R)$  is the number of elements in row  $i$ .

To a bounded RC graph  $R$  with  $\text{ht}(R) \geq 1$ , we define the *trim* operation  $\text{trim}(R)$  to be the bounded RC graph with height  $\text{ht}(R) - 1$  and underlying set  $\{(i-1, j-1) : (i, j) \in R, i \geq 2\}$ . We also define

$$\uparrow^m R = \{(i+m, j) : (i, j) \in R\}$$

Let  $\mathcal{BRC}$  be the free abelian group spanned by all bounded RC graphs. If  $\mathcal{BRC}_n$  is the subgroup spanned by all bounded RC graphs  $R$  with  $\text{ht}(R) = n$ , then we have a grading

$$\mathcal{BRC} = \bigoplus_{n=0}^{\infty} \mathcal{BRC}_n$$

There is an evident evaluation map  $\phi : \mathcal{BRC} \rightarrow \mathcal{A}$  defined on basis elements as

$$\phi(R) = x_{\mathbf{wt}(R)}$$

which is a surjective homomorphism of graded modules. There is also a map  $\alpha : \mathcal{BRC} \rightarrow \mathcal{D}$  defined by

$$\alpha(R) = \Xi_{w_R}^{\mathbf{ht}(R)}$$

which is also a surjective homomorphism of graded modules. In addition, there is  $\omega : \mathcal{BRC} \rightarrow \mathcal{D}$  defined by

$$\omega(R) = [\mathbf{wt}(R)]$$

which is similarly surjective.

We can define elements  $\mathcal{S}_w(n)$  as

$$\mathcal{S}_w(n) = \sum_{\substack{w_R=w \\ \mathbf{ht}(R)=n}} R$$

For a generating element  $[a]$  of  $\mathcal{D}$  and a bounded RC graph  $R$ , we define

$$[a] \cdot R = \sum_{\substack{\mathbf{trim}(R')=R \\ \mathbf{wt}_1(R')=a}} R'$$

which is an element of  $\mathcal{BRC}$ . By virtue of the fact that  $\mathcal{D}$  is a free algebra generated by these elements, it is nearly a trivial observation that this is a left module action on  $\mathcal{BRC}$ . The consequences of this, however, are not at all trivial.

**Lemma 3.1.2** ([2, Corollary 3.11]). *We have that  $\mathcal{D}_1(w)$  is equal to the set of permutations  $w'$  such that there exists a permutation  $v = s_{a_1} \cdots s_{a_m}$  for some integers  $a_1 > a_2 > \cdots > a_m \geq 1$  such that  $w = v \uparrow w'$ .*

**Lemma 3.1.3.** *Let  $v$  be a permutation. If  $v \searrow v'$ , let  $a_1, \dots, a_k$  be the elements of  $Q_1(v', v)$  in decreasing order. Then*

$$v = s_{a_1} \cdots s_{a_k} \uparrow v'$$

*Proof.* Suppose  $v \in S_n$ . We have by definition that there is a sequence of integers  $b_1, \dots, b_p$ , all distinct and greater than 1, such that

$$vt_{1,b_1} \cdots t_{1,b_p}(1) = n + 1$$

and

$$vt_{1,b_1} \cdots t_{1,b_p}(i + 1) = v'(i)$$

for all  $i < n - 1$ . This means that

$$vt_{1,b_1} \cdots t_{1,b_p} = s_n s_{n-1} \cdots s_1 \uparrow v'$$

This is because if  $v'' = \uparrow v'$ , then

$$v''(1) = 1$$

and

$$v''(i) = v(i - 1) + 1$$

The cycle  $s_n \cdots s_1$  sends  $1 \mapsto n + 1$  and  $i \mapsto i - 1$  if  $1 < i \leq n + 1$ , hence

$$vt_{1,b_1} \cdots t_{1,b_p} = s_n s_{n-1} \cdots s_1 \uparrow v'$$

In particular,

$$v = s_n s_{n-1} \cdots s_1 \uparrow v' t_{1,b_p} \cdots t_{1,b_1}$$

This results in the factorization

$$v = s_n \cdots s_1 t_{1,v'(b_p-1)+1} \cdots t_{1,v'(b_1-1)+1} \uparrow v'$$

The value  $v'(b_j - 1)$  necessarily decreases as  $j$  decreases, since applying the corresponding reflection in the reverse order strictly increases the length with each application. Consequently, multiplying  $s_n \cdots s_1$  on the right by these reflections removes the simple reflections  $s_{v'(b_p-1)}, \dots, s_{v'(b_1-1)}$ . The indices removed are precisely the complement of the elements of  $Q_1(v', v)$ , hence the elements of  $Q_1(v', v)$  in decreasing order are what remain, as desired.  $\square$

**Definition 3.1.4.** For a set of positive integers  $A = \{a_1, \dots, a_m\}$  with  $a_1 > a_2 > \dots > a_m \geq 1$  and a positive integer  $i$ , define

$$\text{row}_i(A) = \{(i, a_j) \mid a_j \in A\}$$

**Theorem 3.1.** Let  $a \geq 0$  be an integer and let  $R \in \mathcal{BRC}$ . Then

$$[a] \cdot R = \sum_{\substack{w_R \in \mathcal{D}_1(w') \\ \ell(w_R, w') = a}} (\text{row}_1(Q_1(w_R, w')) \cup \uparrow R)$$

where the right side denotes bounded RC graphs with  $\text{ht}(R) + 1$  rows.

*Proof.* If  $\text{trim}(R') = R$ , then by definition  $w_{R'} = s_{a_1} \dots s_{a_m} \uparrow w_R$ . It follows by Lemma 3.1.2 then  $w_R \in \mathcal{D}_1(w_{R'})$ . By Lemma 3.1.3, the integers  $a_1, \dots, a_m$  are precisely the elements of  $Q_1(w_R, w_{R'})$  in decreasing order. This establishes the result.  $\square$

**Lemma 3.1.5.** Let  $a \geq 0$  be an integer and let  $w \in S_\infty$ . For any valid  $n$ , we have

$$[a] \cdot \mathcal{S}_w(n) = \sum_{\substack{w \in \mathcal{D}_1(w') \\ \ell(w, w') = a}} \mathcal{S}_{w'}(n+1)$$

Let  $t$  be an indeterminate commuting with all elements of  $\mathcal{D}$ . Write

$$\mathfrak{S}(t) = \sum_{a=0}^{\infty} [a] t^a$$

Define

$$\mathfrak{S}(x_1, x_2, \dots, x_n) = \mathfrak{S}(x_1) \mathfrak{S}(x_2) \dots \mathfrak{S}(x_n)$$

**Theorem 3.2.** Let  $\emptyset \in \mathcal{BRC}$  denote the empty bounded RC graph with  $\text{ht}(\emptyset) = 0$ . Then

$$\mathfrak{S}(x_1, \dots, x_n) \cdot \emptyset = \sum_{w \in S_\infty} \mathfrak{S}_w(x_1, \dots, x_n) \mathcal{S}_w(n)$$

*Proof.* The result for  $n = 1$  is Lemma 3.1.5 together with Theorem 3.1. The general result follows by induction on  $n$ . Consider the inductive hypothesis

$$\mathfrak{S}(x_2, \dots, x_n) \cdot \emptyset = \sum_{w \in S_\infty} \mathfrak{S}_w(x_2, \dots, x_n) \mathcal{S}_w(n-1)$$

Then applying  $\mathfrak{S}(x_1)$  to both sides, we have

$$\mathfrak{S}(x_1) \mathfrak{S}(x_2, \dots, x_n) \cdot \emptyset = \sum_{w \in S_\infty} \mathfrak{S}_w(x_2, \dots, x_n) \mathfrak{S}(x_1) \mathcal{S}_w(n-1)$$

which is equal to

$$\sum_{a=0}^{\infty} \sum_{w \in S_\infty} x_1^a \mathfrak{S}_w(x_2, \dots, x_n) \mathfrak{S}(x_1) [a] \mathcal{S}_w(n-1)$$

Applying Lemma 2.6.4 to each term, we have

$$\sum_{a=0}^{\infty} \sum_{w \in S_\infty} x_1^a \mathfrak{S}_w(x_2, \dots, x_n) \sum_{\substack{w' \in \mathcal{D}_1(w') \\ \ell(w, w') = a}} \mathcal{S}_{w'}(n)$$

Bringing the polynomial inside the inner sum, this is

$$\sum_{w' \in S_\infty} \left( \sum_{w \in \mathcal{D}_1(w')} x_1^{\ell(w, w')} \mathfrak{S}_w(x_2, \dots, x_n) \right) \mathcal{S}_{w'}(n)$$

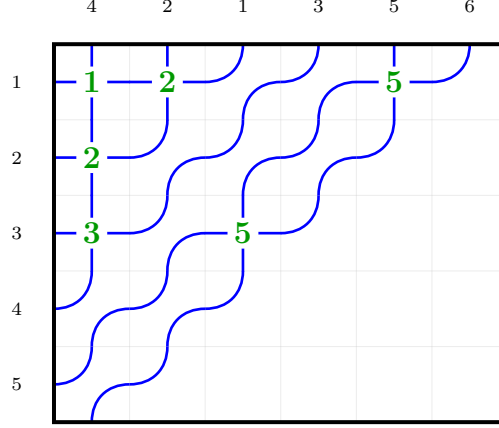
which simplifies to

$$\sum_{w' \in S_\infty} \mathfrak{S}_{w'}(x_1, \dots, x_n) \mathcal{S}_{w'}(n)$$

as desired.  $\square$



FIGURE 2. An invalid set of crossings causing pipes to cross more than once, caused by inserting a crossing at a negative root



**3.3. Zeroing out the last row.** We proceed now to define a product on  $\mathcal{BRC}$  turning it into a ring. To do this, we need to be able to define a function  $\mathcal{Z} : \mathcal{BRC} \rightarrow \mathcal{BRC}$  trimming empty rows from the bottom instead of from the top. This is far more complicated.

---

**Algorithm 1** Basic monk insertion  $i \xrightarrow{k} R$

---

- 1: **Input:** An RC graph  $R$ , parameter  $k$ , and an integer  $i$  with  $1 \leq i \leq k$ .
  - 2: **Output:** A modified RC graph  $R'$  with  $\text{wt}_j(R') = \text{wt}_j(R)$  for  $j \neq i$  and  $\text{wt}_i(R') = \text{wt}_i(R) + 1$  such that  $w_R \xrightarrow{k} w_{R'}$ .
  - 3: Find leftmost position  $(i, j) \notin R$  in row  $i$  such that if  $\text{rt}_R(i, j) = (a, b)$ , then  $a \leq k < b$ .
  - 4:  $R \leftarrow R \cup \{(i, j)\}$
  - 5: **if** there exists  $(i', j') \in R$  with  $\text{rt}_R(i', j') \in \Phi^-$  **then**
  - 6:      $R \leftarrow R \setminus \{(i', j')\}$
  - 7:     Return to step 3 substituting  $i = i'$ .
  - 8: **end if**
  - 9: **return**  $R$
- 

See Figure 3 for an example of the zeroing operation (Algorithm 3).

Note that Algorithm 2 is *not* a realization of Sottile's Pieri formula for complete symmetric polynomials, despite preserving the relevant Bruhat relation. This is because the map

$$\left( \binom{k}{p} \right) \times \mathcal{RC}(w) \rightarrow \mathcal{RC}(n)$$

given by

$$(I, R) \mapsto I \xrightarrow{k} R$$

need not be injective.

**Lemma 3.3.1.** *Given an RC graph  $R$ , an integer  $k$ , and  $k \geq i_1 \geq \dots \geq i_m \geq 1$ , Algorithm 2 produces a valid RC graph  $R'$  satisfying*

$$\text{wt}_i(R') = \text{wt}_i(R) + \#\{j \mid i_j = i\}$$

and

$$w_R \xrightarrow{k} w_{R'}$$

*Proof.* Set  $R_0 = R$  to be the initial RC graph. We claim that given  $R$  and  $L$  at the start of iteration  $p$  of the main loop, we have that  $R$  is a valid RC graph satisfying

$$\text{wt}_i(R) = \text{wt}_i(R_0) + \#\{j \leq p-1 \mid i_j = i\}$$



**Algorithm 2** Pseudo-Pieri insertion  $I \overset{k}{\rightsquigarrow} R$ 


---

```

1: Input: An RC graph  $R$ , parameter  $k$ , and sequence  $I = \{i_1, \dots, i_m\}$  with  $k \geq i_1 \geq i_2 \geq \dots \geq i_m \geq 1$ .
2: Output: A modified RC graph  $R'$  with  $\text{wt}_i(R') = \text{wt}_i(R)$  for  $i \notin I$  and  $\text{wt}_i(R') = \text{wt}_i(R) + \#\{j \mid i_j = i\}$ 
   for  $i \in I$  such that  $w_R \overset{k}{\Rightarrow} w_{R'}$ .
3: Initialize: Let  $L \leftarrow []$  (empty list of pairs  $(a, b)$  where  $a \leq k < b$ ), and  $U \leftarrow []$  (empty list of positions).
4: for each  $i \in (i_1, \dots, i_m)$  do
5:   Find leftmost position  $(i, j) \notin R$  in row  $i$  satisfying  $j > j'$  for all  $(i, j') \in U$  such that either:
6:   a)  $\text{rt}_R(i, j) = (s, q)$  where  $s \leq k < q$  and  $q \notin \{b \mid (a, b) \in L\}$ .
7:   b)  $\text{rt}_R(i, j) = (b_r, q)$  where  $q > k$ ,  $b_r < q$ , and  $q \notin \{b \mid (a, b) \in L\}$ .
8:    $R \leftarrow R \cup \{(i, j)\}$  and  $U \leftarrow U \cup \{(i, j)\}$ 
9:   Update  $L$  by adding  $(s, q)$  or replacing  $(a_r, b_r)$  with  $(a_r, q)$  and  $(a_r, b_r)$ .
10:  if there exists  $(i', j') \in R$  with  $\text{rt}_R(i', j') \in \Phi^-$  then
11:     $R \leftarrow R \setminus \{(i', j')\}$ 
12:    Let  $\text{rt}_R(i', j') = (q, s)$ 
13:    if  $(s, q) \in L$  then
14:      Remove  $(s, q)$  from  $L$ 
15:    else
16:      Remove  $(a_r, q)$  from  $L$ , where  $(a_r, q), (a_r, s) \in L$ 
17:    end if
18:    Return to step 5 to insert  $i'$ .
19:  end if
20: end for
21: return  $R$ 

```

---

**Algorithm 3** Map  $\mathcal{Z}(R)$  zeroing out last row

---

```

1: Input: A bounded RC graph  $R$  with  $\text{ht}(R) = n$  and row  $n$  empty.
2: Output: A bounded RC graph  $R'$  with  $\text{ht}(R') = n - 1$ ,  $|R'| = |R|$  (same number of crossings), and
    $w_R \overset{n}{\searrow} w_{R'}$ .
3: if  $R$  with last row removed is a valid bounded RC graph then
4:   return  $R$  with last row removed
5: else
6:   Let  $R_0 \leftarrow R$ .
7:   Find the maximal  $p$  and sequence  $\{(i_m, j_m)\}_{m=1}^p$  such that:
8:    $\text{rt}_{R_{m-1}}(i_m, j_m) = (n + m - 1, n + m)$  for each  $m$ , where  $R_m = R_{m-1} \setminus \{(i_m, j_m)\}$  for each  $m \geq 1$ .
9:    $R^- \leftarrow R \setminus \{(i_1, j_1), \dots, (i_p, j_p)\}$ .
10:  Let  $I \leftarrow (i_1, i_2, \dots, i_p)$ .
11:   $D \leftarrow R^- \cup \{(n, 1), (n, 2), \dots, (n, p)\}$ .
12:   $D' \leftarrow I \overset{n-1}{\rightsquigarrow} D$ 
13:   $R' \leftarrow \{(i, j) \in D' \mid i < n\}$  as a bounded RC graph with  $n - 1$  rows.
14:  return  $R'$ .
15: end if

```

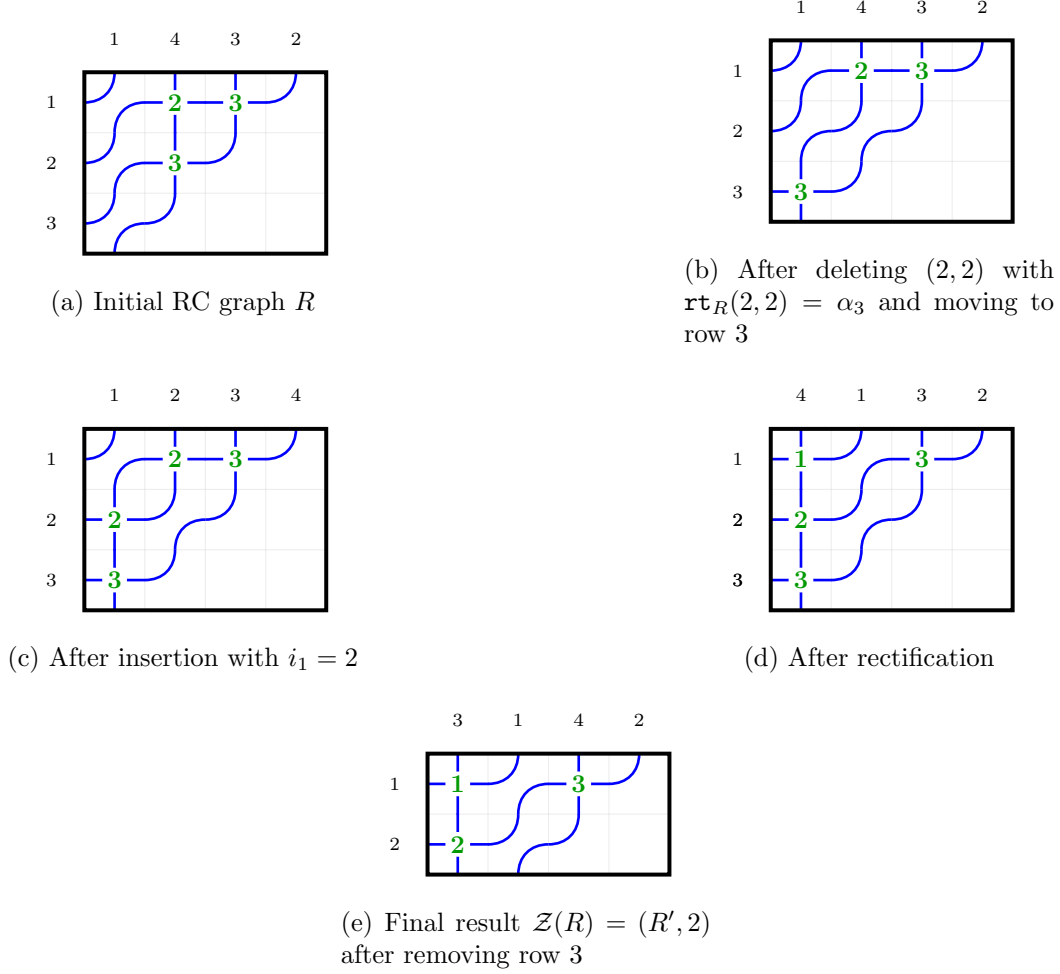
---

and

$$w_R = w_{R_0} t_{a_1 b_1} \cdots t_{a_{p-1} b_{p-1}}$$

where  $L = [(a_1, b_1), \dots, (a_p, b_p)]$ . This is clear for  $p = 1$ . For larger  $p$ , suppose we are inserting at row  $i_p$ . If we are in case (a) of Step 5, then adding  $(i_p, j)$  to  $R$  adds the root  $t_s - t_q$  to the inversion set of  $w_R$ , and multiplying by  $t_{sq}$  gives the desired result. If we are in case (b) of Step 5, then adding  $(i_p, j)$  to  $R$  results in multiplication by  $t_{b_r q}$ . This commutes past the other reflections to meet  $t_{a_r b_r}$ . We thus have the situation

$$t_{a_r b_r} t_{b_r q} = t_{a_r q} t_{a_r b_r}$$

FIGURE 3. Step-by-step computation of  $\mathcal{Z}(R)$  for  $R = \{(1, 2), (1, 3), (2, 2)\}$ .

This ensures that the product remains as desired if the RC graph is valid. However, the condition that the RC graph  $R$  be valid is not guaranteed after this step, so we must rectify. Suppose we must rectify at row  $i - 1$ . We find a negative root  $(i - 1, j')$  which must have been created by the insertion, and hence by the strong exchange property equal to  $\mathbf{rt}_R(i, j)$  that was inserted. Removing this root (from both the graph and from  $L$ ) returns us to the original permutation at the beginning of the iteration, and performing the insert at row  $i - 1$  adds a new positive root, giving the desired result on the permutation. The weight is unchanged since we removed and added one crossing in row  $i - 1$ . If the algorithm ends here, we have instead multiplied by the new reflection obtained in the ultimate insert step. Otherwise, repeating this process for all necessary rectifications completes the proof of the claim. The claim iterated to  $p = m + 1$  yields the desired result, and the method of updating  $L$  ensures that the  $b_j$  are all distinct, so that  $w_R \xrightarrow{k} w_{R'}$ .  $\square$

**Lemma 3.3.2.** *Given a bounded RC graph  $R$  with  $\mathbf{ht}(R) = n$  such that row  $n$  is empty, Algorithm 3 produces a valid bounded RC graph  $R'$  with  $\mathbf{ht}(R') = n - 1$  satisfying*

$$\mathbf{wt}(R') = \mathbf{wt}(R)$$

*Proof.* Stripping out the crossings at roots  $(n, n + 1), (n + 1, n + 2), \dots, (n + p - 1, n + p)$  removes exactly one crossing from each of rows  $i_1, i_2, \dots, i_p$ , and moving them to the last row to obtain  $R_1$  ensures that  $w_R = w_{R_1}$ . By construction, the portion of the RC graph in rows with index less than  $n$  is valid (meaning its max descent is at most  $n - 1$ ). Applying Algorithm 2 to insert at rows  $i_1, i_2, \dots, i_p$  adds different crossings to preserve the number of elements in each row without adding descents past index  $n$  in the permutation, by

Lemma 3.3.1. Removing row  $n$  then yields a valid bounded RC graph  $R'$  with  $|R'| = n - 1$  and the desired properties.  $\square$

**Theorem 3.3.** *Let  $w$  be a permutation with last descent at most  $n$ . Let  $\mathcal{RC}(w, n)^0$  be the set of bounded RC graphs  $R$  with  $\text{ht}(R) = n$  such that  $w_R = w$  and row  $n$  is empty. Then*

$$\mathcal{Z} : \mathcal{RC}(w, n)^0 \rightarrow \bigcup_{w \xrightarrow{n} w'} \mathcal{RC}(w', n - 1)$$

*is a weight-preserving bijection.*

To prove Theorem 3.3 for  $n = 2$ , we may characterize the bounded RC graphs  $R$  with  $|R| = 2$  such that row 2 is empty and  $\mathbf{m}(w_R) = 2$  as those for permutations  $w = s_k s_{k-1} \cdots s_2$  for some  $k > 1$ . Algorithm 3 in this case consists moves the entirety of the crossings in row 1 to row 2. The procedure then inserts  $k - 1$  crossings into row 1 in order from left to right, which must have roots  $t_q - t_s$  such that  $q = 1$ . Thus  $R'$  is precisely  $\{(1, 1), (1, 2), (1, 3), \dots, (1, k - 1)\}$ , which is the unique bounded RC graph for the permutation  $w' = s_{k-1} s_{k-2} \cdots s_1$  with one row. This establishes the base case.

For the induction step, we require the following lemmas.

**Lemma 3.3.3.** *Let  $R$  be a bounded RC graph with  $\text{ht}(R) = n \geq 2$  such that row  $n$  is empty. Then if  $\mathcal{Z}(R) = R'$ , we have*

$$w_R \xrightarrow{n} w_{R'}$$

*Proof.* Let  $w = w_R$  and suppose  $\mathbf{c}_n(w) = m$ . By construction, the second to last step of Algorithm 3 yields a bounded RC graph  $\tilde{R}$  with  $|\tilde{R}| = n$  such that if  $\tilde{w} = w_{\tilde{R}}$ , then

$$\tilde{w}(n) > \tilde{w}(n + 1) < \tilde{w}(n + 2) < \cdots < \tilde{w}(n + m)$$

and

$$w \xrightarrow{n-1} \tilde{w}$$

via reflections  $t_{ab}$  such that  $n \leq b \leq n + m$ . Let  $w' = w_{R'}$ . We also have

$$\tilde{w} \xrightarrow{n} \varphi_{n, N}(w')$$

via only reflections  $t_{nb}$  such that  $b > n + m$ . We claim that

$$w \xrightarrow{n} \varphi_{n, N}(w')$$

This can only fail if  $\tilde{w}(n) \neq w(n)$  by the observations above. However, the pipe labeled  $n$ , by virtue of the fact that we have  $(n, 1), \dots, (n, m)$  populated, will always lie to the right of pipes  $n + 1, n + 2, \dots, n + m$  in the wiring diagram for  $\tilde{w}$  or any intermediate stage. Inserting into any row that contained a crossing  $(n, n + p)$ , there must be a valid empty space to the left of the pipe labeled  $n$  since we have deleted these crossings. By virtue of the fact that the leftmost is always chosen, no reflection  $(i, n)$  will ever be inserted. This ensures that  $\tilde{w}(n) = w(n)$ , as desired.  $\square$

**Lemma 3.3.4.** *Let  $(R, n)$  be a bounded RC graph with  $n \geq 2$  such that row  $n$  is empty. Then*

$$\mathcal{Z}(\text{trim}(R)) = \text{trim}(\mathcal{Z}(R))$$

*Proof.* This is almost a trivial observation. In terms of the word of  $R$ ,  $\text{trim}(R, n)$  preserves a suffix. Removing all of the initial roots before trimming is therefore the same as removing the initial roots that still remain after trimming, by the exchange property. Afterwards, in performing the insertion algorithm, there is no dependency on rows with a lower index, the modification only proceeds downward in row number. Therefore, trimming the first row at any point only stops the process earlier, and does not change rows with higher index than 1 in the outcome.  $\square$

**Lemma 3.3.5.** *Let  $w$  be a permutation with last descent at most  $n$ . Let  $\mathcal{RC}(w, n)^0$  be the set of bounded RC graphs  $R$  with  $\text{ht}(R) = n$  such that  $w_R = w$  and row  $n$  is empty. Then*

$$\mathcal{Z} : \mathcal{RC}(w, n)^0 \rightarrow \mathcal{RC}(n - 1)$$

*is injective.*

*Proof.* If  $n = 2$  this is clear. Suppose now that  $n > 2$  and that the result holds for  $n - 1$ . Let  $(R, n) \in \mathcal{RC}(w, n)^0$ . If  $(R', n) \in \mathcal{RC}(w, n)^0$  is another bounded RC graph such that

$$\mathcal{Z}(R) = \mathcal{Z}(R')$$

then by Lemma 3.3.4, we have

$$\mathcal{Z}(\text{trim}(R)) = \mathcal{Z}(\text{trim}(R'))$$

hence  $R$  and  $R'$  agree on all rows except possibly row 1 by the inductive hypothesis. Since  $w_R = w_{R'}$ , it follows that  $R = R'$ , establishing injectivity.  $\square$

*Proof of Theorem 3.3.* By the previous lemma, it suffices to show that  $\mathcal{Z}$  is surjective. However, this follows from the pigeonhole principle and the well-known transition formula for Schubert polynomials.  $\square$

We may extend  $\mathcal{Z}$  to an endomorphism  $\mathcal{BRC} \rightarrow \mathcal{BRC}$  by defining  $\mathcal{Z}(R) = 0$  if the last row of  $R$  is not empty. Then we have the following result.

**Theorem 3.4.** *Let  $w$  be a permutation with last descent at most  $n$ . Then*

$$\mathcal{Z}(\mathcal{S}_w(n)) = \sum_{\substack{w \searrow w' \\ \ell(w) = \ell(w')}}^n \mathcal{S}_{w'}(n-1)$$

**Definition 3.3.6** (Pulling out an empty row). Let  $R$  be a bounded RC graph with  $\text{ht}(R) = n$  and let  $p \leq n$  be such that row  $p$  of  $R$  is empty. Let  $R_{\leq p}$  denote the RC-graph consisting of the first  $p$  rows and  $R_{> p}$  the RC-graph consisting of rows  $p+1$  through  $n$ . Now,  $\mathbf{m}(R_{\leq p})$  could be greater than  $p$ . If it is less than or equal to  $p$ , define

$$\mathcal{Z}^{(p)}(R) = \mathcal{Z}(R_{\leq p}) \cup \downarrow R_{> p}$$

as a bounded RC graph with  $\text{ht}(R) - 1$  rows. Otherwise, define  $R' = R_{\leq p}$ , let  $d_1 = \mathbf{m}(w_{R'})$  and set  $R_1 = R'$ . While  $\mathbf{m}(R_i) > p$ , do:

Set  $R' = R_i$ . While  $\mathbf{m}(R') \geq d_i$ , delete the element  $(a, b) \in R'$  such that  $\text{rt}_{R'}(a, b) = (\mathbf{m}(R'), \mathbf{m}(R') + 1)$  from  $R'$  and store  $a$  in the list (multiset)  $A_i$ . After enough iterations such that  $\mathbf{m}(R') < d_i$ , set  $R_{i+1} = R'$  and set  $d_{i+1} = \mathbf{m}(R_{i+1})$ , then repeat.

At termination, say at step  $k$ , set

$$\mathcal{Z}^{(p)}(R) = (A_1 \overset{d_1-1}{\rightsquigarrow} \dots A_k \overset{d_k-1}{\rightsquigarrow} \mathcal{Z}(R_k)) \cup \downarrow R_{> p}$$

be the desired bounded RC graph with  $\text{ht}(R) - 1$  rows.

We show an example in Figure 4.

**Definition 3.3.7.** Let  $R$  be an RC graph. We define an RC graph  $\overline{R}$  and a sequence  $\text{strip}(R)$  as follows. Let  $\mathbf{m}(R) = n$ , set  $R_0 = R$ , and set  $A_0 = ()$ . While  $\mathbf{m}(R_i) > n - 1$ , delete the element  $(a, b) \in R_i$  such that  $\text{rt}_{R_i}(a, b) = (\mathbf{m}(R_i), \mathbf{m}(R_i) + 1)$  to obtain  $R_{i+1}$ , and add  $a$  to  $A_i$  to obtain  $A_{i+1}$ . When the algorithm terminates at step  $k$ , set

$$\text{strip}(R) = A_k$$

and set  $\overline{R} = R_k$ .

**Lemma 3.3.8.** *Let  $R$  be an RC graph. Then*

$$R = \text{strip}(R) \overset{\mathbf{m}(R)}{\rightsquigarrow} \overline{R}$$

*Proof.* Let  $n = \mathbf{m}(R)$ . We prove this by induction on  $\mathbf{c}_n(R)$ . Let  $(i, j)$  be the location of the descent  $n$  in  $R$ . If  $\mathbf{c}_n(R) = 1$ , then we know that insertion of  $i$  into  $\overline{R}$  returns an RC graph with the same weight and permutation as  $R$ , the latter assertion because the only  $n$ -reflection that increases the length of  $w_{\overline{R}}$  by exactly 1 is  $s_n$ . By the exchange property, there is precisely one location in row  $i$  that this  $n$ -reflection can be inserted, and we have the result when  $\mathbf{c}_n(R) = 1$ .

Assume the inductive hypothesis that we have the result for  $\mathbf{c}_n(R) = k$  for some  $k \geq 1$  and additionally that insertion order of reflections has been  $(n, n+1), \dots, (n, n+k)$ . Assume  $\text{strip}(R) = (r_1, \dots, r_{k+1})$  in increasing order and we have inserted all of  $r_2, \dots, r_{k+1}$  in Algorithm 2. By the induction hypothesis, the RC graph  $R'$  we have at this point has permutation  $\mathbf{c}_i R' = \mathbf{c}_i R$  for  $i < n$  and  $\mathbf{c}_n(R') = k$ , and we have equality of  $R'$  with  $R$  except deletion of the root  $(n, n+k+1)$ . Since  $w_{R'}(n) < w_{R'}(n+k+1)$ , the only

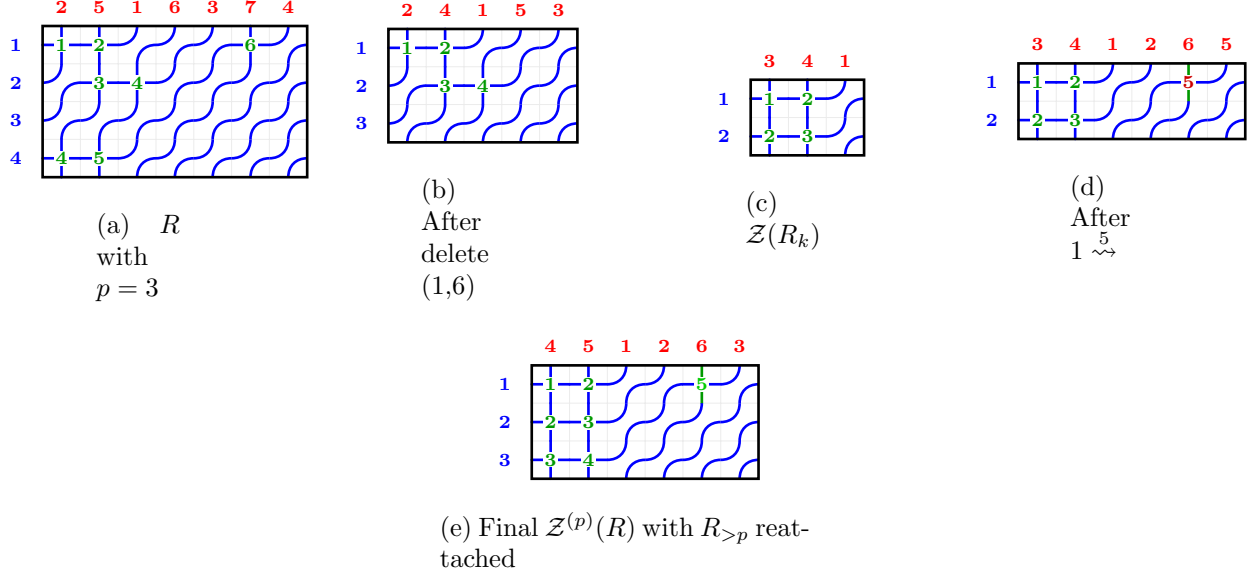


FIGURE 4. Example of  $\mathcal{Z}^{(p)}$  operation with  $p = 3$ . Starting with (a)  $R$  where row 3 is empty, we identify element  $(1,6)$  creates  $\max d > p$ . (b) After deleting it (storing row 1 in  $A_1$ ). (c) Apply  $\mathcal{Z}$  to get 2-row graph. (d) Insert back at row 1 with  $k = d_1 - 1 = 5$  (shown in red). (e) Reattach  $R_{>p}$  shifted down to get final result.

$n$ -reflection that can be inserted to increase the length of  $w_{R'}$  by 1 is  $(n, n + k + 1)$ . By pipe considerations, this must be inserted in column  $c = n + k + 1 - r_1$ . Since this is the only possible insertion location and the permutation is the same as  $w_R$ , we have the result by induction.  $\square$

**Theorem 3.5.** *The RC graphs for a permutation  $w$  are in bijection with the set of tuples of weakly decreasing sequences  $(A_1, \dots, A_k)$  such that  $|A_i| = \mathbf{c}_i(w)$  for all  $i$  and (labeled bruhat paths insertion) LABELED BRUHAT PATHS*

*FIDDLE WITH THE BEEPS ONE ROW EMPTY GOOD STUFF*

**Theorem 3.6.** *Let  $R \in \mathcal{BRC}(w, n)^{(0,p)}$  be the set of all bounded RC graphs with  $\mathbf{ht}(R) = n$  such that row  $p$  of  $R$  is empty. Then we have that the restriction of  $\mathcal{Z}^{(p)}$  is a bijection*

$$\mathcal{Z}^{(p)} : \mathcal{BRC}(w, n)^{(0,p)} = \bigcup_{\substack{w \xrightarrow{p} w' \\ \ell(w) = \ell(w')}} \mathcal{BRC}(w', n - 1)$$

satisfying  $\mathbf{wt}(\mathcal{Z}^{(p)}(R)) = (i_1, \dots, i_{p-1}, i_{p+1}, \dots, i_n)$ , where  $\mathbf{wt}(R) = (i_1, \dots, i_n)$ .

*Proof.* Consider first the special case that  $R_{>p}$  is empty. Let  $w_0 = w_{\mathcal{Z}(R_k)}$ . Then we know that

$$R_k \xrightarrow{p} \mathcal{Z}(R_k)$$

Since every element of  $A_k$  is less than  $p$  and  $d_k > p$ , the insertion  $A_k \xrightarrow{d_k-1} \mathcal{Z}(R_k)$  only adds right roots  $(a, b)$  with  $a < p$  and  $b > p$ . Thus

$$A_k \xrightarrow{d_k} R_k \xrightarrow{p} A_k \xrightarrow{d_k-1} \mathcal{Z}(R_k)$$

We assert the (descending) inductive hypothesis that for some index  $j$  we have

$$A_j \xrightarrow{d_j} \dots A_k \xrightarrow{d_k} R_k \xrightarrow{p} A_j \xrightarrow{d_j-1} \dots A_k \xrightarrow{d_k-1} \mathcal{Z}(R_k)$$

Then the induction step follows with precisely the same reasoning; since every element of  $A_{j-1}$  is less than  $p$  and  $d_{j-1} > p$ , the insertion  $A_{j-1} \xrightarrow{d_{j-1}-1}$  only adds right roots  $(a, b)$  with  $a < p$  and  $b > p$ . Thus

$$A_{j-1} \xrightarrow{d_{j-1}-1} \dots A_k \xrightarrow{d_k} R_k \xrightarrow{p} A_{j-1} \xrightarrow{d_{j-1}-1} \dots A_k \xrightarrow{d_k-1} \mathcal{Z}(R_k)$$

and the result follows by induction in the special case that  $R_{>p}$  is empty, where we invoke Lemma 3.3.8 to assert that the left-hand side is equal to  $R$ .

Since the row was initially empty, we have at our disposal the exchange property on  $R_{>p}$ , shifting the reflections down a row to obtain the general case.  $\square$

Braid relation invariance

**3.4. Preservation of the Demazure crystal structure.** RC-graphs have a Demazure crystal structure defined by Assaf and Schilling in [1]. Namely, they define operators  $e_i : \mathcal{RC}(w) \rightarrow \mathcal{RC}(w) \cup \{\emptyset\}$  and  $f_i : \mathcal{RC}(w) \rightarrow \mathcal{RC}(w) \cup \{\emptyset\}$  for each  $i \geq 1$  as follows.

**Definition 3.4.1.** Consider elements  $(i, j) \in R$  and  $(i+1, k) \in R$ . The pairing algorithm starts with the largest  $j$  in row  $i$  and pairs  $(i, j)$  with  $(i+1, k)$  where  $k$  is the smallest such that  $k \geq j$ . If no such  $k$  exists, then  $(i, j)$  is unpaired. The algorithm continues by considering the next largest  $j$  in row  $i$  and repeating the process until all elements in row  $i$  have been considered.

Define  $R_i$  to be the set of unpaired elements in row  $i$  after applying the pairing algorithm between rows  $i$  and  $i+1$ , and define  $L_i$  to be the set of unpaired elements in row  $i+1$ . Then  $f_i(R)$  is defined by removing the leftmost element  $(i, j)$  from  $R_i$  and adding the element  $(i+1, k)$  to  $R$ , where  $k$  is the largest value such that  $(i+1, k) \notin R$  and  $k < j$ . If  $R_i$  is empty or  $k$  does not exist, then  $f_i(R) = \emptyset$ . Similarly,  $e_i(R)$  is defined by removing the rightmost element  $(i+1, k)$  from  $L_i$  and adding the element  $(i, j)$  to  $R$ , where  $j$  is the smallest value such that  $(i, j) \notin R$  and  $j > k$ . If  $L_i$  is empty, then  $e_i(R) = \emptyset$ .

We may transport this structure to bounded RC graphs as operators  $e_i : \mathcal{RC}(w, n) \rightarrow \mathcal{RC}(w, n) \cup \{\emptyset\}$  and  $f_i : \mathcal{RC}(w, n) \rightarrow \mathcal{RC}(w, n) \cup \{\emptyset\}$  by preserving the bound:

$$e_i(R) = e_i(R)$$

$$f_i(R) = f_i(R)$$

where the bound is preserved (i.e.,  $\text{ht}(f_i(R)) = \text{ht}(R)$  when  $f_i(R) \neq \emptyset$ ).

**Definition 3.4.2.** An RC graph  $R$  has a uniquely associated reduced word  $\text{word}(R) = (s_{i_1}, \dots, s_{i_N})$ . Recall the Coxeter-Knuth relation  $\tilde{\text{eg}}$  defined by

$$j \ i \ k \sim j \ k \ i$$

and

$$k \ i \ j \sim i \ k \ j$$

if  $i < j < k$ , and

$$i \ i+1 \ i \sim i+1 \ i \ i+1$$

For an RC graph  $R$ , define  $N(R)$  to be the maximum letter in  $R$ . Then define

$$\tilde{\text{eg}}(R) = (N(R) + 1 - i_1, \dots, N(R) + 1 - i_N)$$

Via the Edelman-Greene insertion algorithm, we may define a pair

$$(P, Q)$$

of tableaux of the same shape such that the reading word of  $P$  is CK-equivalent to  $\tilde{\text{eg}}(R)$  and  $Q$ , the recording tableau, is standard. Define  $\text{tab}(R)$  to be the tableau of the same shape as  $Q$  such that the entry in box  $(i, j)$  is the row index of the box in  $R$  that was inserted to create box  $(i, j)$  in  $P$ .

**Lemma 3.4.3.** *We have that  $\text{tab}(R)$  is a semistandard Young tableau of shape  $\text{shape}(Q)$ , and the map*

$$R \mapsto \text{tab}(R)$$

*is a morphism of crystal graphs into  $B(\text{shape}(Q))$ .*

*Proof.* Suppose  $R$  is a highest weight. Then  $\text{wt}(R)$  is a partition. By the highest weight condition, the longest increasing subsequence of  $\tilde{\text{eg}}(R)$  is of length  $\text{wt}(R)_1$  and is precisely the first row read in the grid order. By the Edelman-Greene correspondence [5], the first row of  $P$  has length equal to the length of the longest increasing subsequence of  $\tilde{\text{eg}}(R)$ . Hence, the first row of  $P$  has length  $\text{wt}(R)_1$ . By similar reasoning on the subsequent rows, we have that  $\text{shape}(P) = \text{wt}(R)$ . We then have that  $\text{tab}(R)$  is the unique Yamanouchi tableau of shape  $\text{wt}(R)$ , establishing the claim for highest weights. The general case follows from the rigidity of the Demazure crystal structure [1]; since the function is weight-preserving, it is a morphism of crystal graphs.  $\square$

**Theorem 3.7.** *The distinct Demazure crystals that make up  $\mathcal{RC}(w)$  are in bijection with the Coxeter-Knuth equivalence classes of reduced words for  $w_0 w w_0$  via the map  $R \mapsto \tilde{\text{eg}}(R)$ , with  $R \mapsto \text{tab}(R)$  being a homomorphism of crystal graphs into  $B(\lambda)$ , where  $\lambda = \text{shape}(P(\tilde{\text{eg}}(R)))$ .*

*Proof.* By [8, Theorem 4.11], if  $e_i(R) \neq \emptyset$ , then  $R$  and  $e_i(R)$  have the same Edelman-Greene insertion tableau. Since conjugation by  $w_0$  is an automorphism of Coxeter-Knuth equivalence, so do  $\tilde{\text{eg}}(R)$  and  $\tilde{\text{eg}}(e_i(R))$ . The shape is determined inductively. Suppose  $R$  is a highest weight element and consider  $\text{word}(R)$ . The first row of  $R$  forms a word that corresponds to an initial increasing subsequence of  $\tilde{\text{eg}}(R)$ . If there were a letter in some row below the first that is smaller than the last letter of the first row, then some raising operator would yield a nonempty result, contradicting the fact that  $R$  is a highest weight. Thus, the first row of  $P(\tilde{\text{eg}}(R))$  has length equal to the length of the first row of  $R$ . The rest follows by induction on the remaining rows.  $\square$

**Definition 3.4.4.** Let  $\mathcal{RC}(w, n)^0$  be the set of bounded RC graphs  $R$  with  $\text{ht}(R) = n$  such that  $w_R = w$  and row  $n$  is empty. We define a function  $\mathcal{Z}_*^R : R \rightarrow R'$ , where  $\mathcal{Z}(R) = (R', n-1)$  and  $w' = w_{R'}$ , as follows. Clearly if  $\mathfrak{c}_n(w) = 0$ , then  $\mathcal{Z}_*^R$  is the identity map.

Consider now the case where  $\mathfrak{c}_n(w) = 1$ . The initial deletion of  $(i, j)$  with  $\text{rt}_R(i, j) = (n, n+1)$  results in an RC graph  $R_0 = R \setminus \{(i, j)\}$  with  $w_{R_0} = w_{s_n}$ , after which we add  $(n, 1)$  to obtain  $R_1$ . Let

$$f_1 : R_1 \rightarrow R$$

be the identity. Afterwards,  $(i_1, j_1)$  is inserted into  $R_1$  to obtain  $R_2$ . Set

$$f_1(i_1, j_1) = (i, j)$$

and

$$f_1(a, b) = (a, b)$$

otherwise.

At this point, rectification may be required. In that case, we delete some element  $(i'_1, j'_1)$  from  $R_2$  such that  $i'_1 < i_1$  and  $\text{rt}_{R_2}(i'_1, j'_1) = \text{rt}_{R_2}(i_1, j_1)$ . Afterwards, we add  $(i'_1, j_2)$  to obtain  $R'_2$ . Set

$$f_2(i'_1, j_2) = (i'_1, j'_1)$$

and

$$f_2(a, b) = f_1(a, b)$$

otherwise. Continuing in this manner, we eventually obtain  $R'$ . Piecing all of the maps defined at each step gives the desired map. The same method works for  $\mathfrak{c}_n(w) > 1$  by induction.

**Lemma 3.4.5.** *Let  $(R, n) \in \mathcal{RC}(w, n)^0$  and suppose  $\mathcal{Z}(R) = (R', n-1)$ . Then for any  $(a, b) \in R'$ ,  $(a, b)$  is paired in the  $i, i+1$  pairing in  $R'$  if and only if  $\mathcal{Z}_*^R(a, b)$  is paired in the  $i, i+1$  pairing in  $R$ .*

*Proof.* This is true for  $a = i$  because at most one root is changed in row  $i$  and it has moved to the left. For  $a = i+1$ , the only way that the pairing status could change is if a root in row  $i$  moved past an unpaired root in row  $i+1$ . However, by construction of the insertion algorithm, this cannot happen since a root that was already inserted into row  $i+1$  was deleted from row  $i$  in the rectification process, and the new inserted root occurs to the left.  $\square$

**Theorem 3.8.** *Let  $w \in S_\infty$  and  $n > 0$  be such that  $\mathfrak{m}(w) \leq n$ . Then*

$$\mathcal{Z} : \mathcal{RC}(w, n)^0 \rightarrow \bigcup_{w \xrightarrow{n} w'} \mathcal{RC}(w', n-1)$$

*is a weight-preserving isomorphism of crystal graphs.*

*Proof.* The existence of the map  $\mathcal{Z}_*^R$  and the previous lemma establish that  $\mathcal{Z}$  is a bijection (by Theorem 3.3) that preserves both weights and the lengths of  $i$ -strings. Hence it is a weight-preserving isomorphism of crystal graphs.  $\square$

**3.5. Crystal divided differences.** Let  $R$  be an RC graph and let  $i > 0$  be an integer. We define  $\mathfrak{F}^i R$ , an element of  $\mathcal{RC}$ , as follows. Define

$$\mathfrak{F}^i R = 0$$

unless  $s_i$  is a right descent of  $w_R$  and there exists  $(i, j) \in R$  such that  $\mathbf{rt}_R(i, j) = (i, i + 1)$ . If these latter two conditions are satisfied, define

$$R' = R \setminus \{(i, j)\}$$

where  $\mathbf{rt}_R(i, j) = (i, i + 1)$ . If  $e_i(R') \neq \emptyset$ , define  $\mathfrak{F}^i R = 0$ . Otherwise, define

$$\mathfrak{F}^i R = \sum_{p=0}^{\varphi_i(R')} f_i^p R'$$

**Lemma 3.5.1.** *Let  $R$  be an RC graph and let  $i > 0$  be an integer. If  $s_i$  is not a right descent of  $w_R$ , then there is a unique  $R'$  such that the coefficient of  $R$  in  $\mathfrak{F}^i R'$  is 1, and for other  $R'$  the coefficient is 0.*

*Proof.* Suppose  $s_i$  is not a right descent of  $w_R$ . Assume without loss of generality that  $e_i R = \emptyset$ . If  $(i + 1, 1) \notin R$ , then  $(i, 1) \notin R$  because  $s_i$  is not a right descent of  $w_R$ . In that case, let  $R' = R \cup \{(i, 1)\}$ . Then

$$\mathfrak{F}^i R' = R + \text{other terms}$$

If instead  $(i + 1, 1) \in R$ , since  $e_i(R) = \emptyset$  it follows that  $(i, 1) \in R$ , and if  $j$  is the maximum value such that  $(i + 1, j') \in R$  for all  $j' < j$ , it follows that  $(i, j') \in R$  for all  $j' < j$ . We must have that  $(i, j + 1) \notin R$ , because  $\mathbf{rt}_R(i, j + 1) = (i, i + 1)$ . Setting  $R' = R \cup \{(i, j + 1)\}$  gives us the result.  $\square$

**Theorem 3.9.** *Suppose  $w \in S_\infty$  and  $i > 0$ . If  $i$  is not a right descent of  $w$ , then*

$$\mathfrak{F}^i \mathcal{S}_w(n) = 0$$

*Otherwise,*

$$\mathfrak{F}^i \mathcal{S}_w(n) = \mathcal{S}_{ws_i}(n)$$

*Proof.* The result is trivial if  $i$  is not a right descent of  $w$ . Suppose  $i$  is a right descent of  $w$ . By Lemma 3.5.1, for each RC graph  $R$  such that  $w_R = ws_i$ , there is a unique RC graph  $R'$  such that the coefficient of  $R$  in  $\mathfrak{F}^i R'$  is 1. Since  $w_{R'} = w$ , the result follows.  $\square$

**Corollary 3.5.2.** *Suppose  $R$  is an RC graph such that  $w_R = w$  is dominant. Then for any reduced word  $(s_{i_1}, s_{i_2}, \dots, s_{i_m})$  for a permutation  $u$  such that*

$$\ell(wu^{-1}) = \ell(w) - \ell(u)$$

*we have that*

$$\mathfrak{F}^{i_1} \mathfrak{F}^{i_2} \dots \mathfrak{F}^{i_m} R = \mathcal{S}_{wu^{-1}}(n)$$

*for sufficiently large  $n$ .*

**Definition 3.5.3.** For a permutation  $w$ , define the *principal RC graph*  $R^0(w)$  of  $w$  to be

$$R^0(w) = \{(i, j) \mid 1 \leq j \leq \mathbf{c}_i(w)\}$$

We say that row  $i$  of an RC graph  $R$  has a *ledge* at column  $j$  if the configuration of boxes in rows  $i$  and  $i + 1$  satisfy  $(i, j) \in R$ ,  $(i + 1, j) \notin R$ ,  $\mathbf{rt}_R(i, j) = (i, i + 1)$ , and for all  $j' < j$  we have that  $(i, j') \in R$  and  $(i + 1, j') \in R$ , as shown in in Figure 5.

**Proposition 3.5.4.** *Let  $R$  be an RC graph and let  $w = w_R$ . Then the following are equivalent.*

(1) *for any reduced word  $(s_{i_1}, s_{i_2}, \dots, s_{i_m})$  for  $w$ , we have*

$$\mathfrak{F}^{i_1} \mathfrak{F}^{i_2} \dots \mathfrak{F}^{i_m} R \neq 0$$

(2)  $R = R^0(w)$ .



*Proof.* For (1) $\Rightarrow$ (2), we proceed by induction on length. For (1) to be true, in particular if  $n = \mathbf{m}(w_R)$  we have that  $(n, 1) \in R$ . Applying  $\mathfrak{F}^n$  and lowering operators (necessarily maximally) results in a term being an RC graph which has the same recursive property, which by the inductive hypothesis is  $R^0(ws_n)$ , which implies that row  $n$  of  $R$  has length  $\mathbf{c}_n(w)$ . Choosing our reduced word carefully, we obtain in the process as some nonzero term an RC graph for  $w'$  with  $\mathbf{c}_k(w') = \mathbf{c}_k(w)$  for all  $k < n$  and  $\mathbf{c}_n(w') = 0$  that has the same property, and hence is principal by the induction hypothesis. It follows that  $R$  is principal as well.

For (2) $\Rightarrow$ (1), we again proceed by induction on length. If  $w$  has no descents, the statement is vacuous. For a principal RC graph  $R^0(w)$  for some  $w$  with  $\ell(w) > 0$  and we have the result for smaller lengths, suppose  $i$  is a descent of  $w$ . Then  $\mathbf{c}_i(w) > \mathbf{c}_{i+1}(w)$ . In particular, if we let  $j = \mathbf{c}_{i+1}(w) + 1$ , then  $(i, j)$  is a ledge of  $R^0(w)$ . Applying  $\mathfrak{F}^i R^0(w)$ , the lowest weight in the sum is in fact  $R^0(ws_i)$ . It follows by induction that applying the sequence of divided difference operators corresponding to a reduced word for  $w$  to  $R^0(w)$  yields the empty RC graph with a coefficient of 1.  $\square$

**Definition 3.5.5.** We say that row  $i$  of an RC graph  $R$  has a *ledge* at column  $j$  if the configuration of boxes in rows  $i$  and  $i + 1$  satisfy  $(i, j) \in R$ ,  $(i + 1, j) \notin R$ ,  $\mathbf{rt}_R(i, j) = (i, i + 1)$ , and for all  $j' < j$  we have that  $(i, j') \in R$  and  $(i + 1, j') \in R$ , as shown in Figure 5.

**Lemma 3.5.6.** Suppose  $\mathfrak{F}^i R \neq 0$ . Then the following hold:

- (1)  $e_i R = \emptyset$ .
- (2) There exists a  $j \geq 1$  such that  $R$  has a ledge at column  $j$ .

*Proof.* If  $\mathfrak{F}^i R \neq 0$ , this means that the root  $(i, i + 1)$  is in row  $i$ . This happens precisely when we have an element  $(i, j) \in R$  such that  $(i + 1, j) \notin R$ , but  $(i, j') \in R$  and  $(i + 1, j') \in R$  for all  $1 \leq j' < j$ . It follows that if  $e_i R \neq \emptyset$ , then  $e_i(R \setminus \{(i, j)\}) \neq \emptyset$ . This means that  $\mathfrak{F}^i R = 0$ , which contradicts the assumption and proves (1).

For (2), by assumption we know that there exists some  $(i, j) \in R$  with  $\mathbf{rt}_R(i, j) = (i, i + 1)$ . Recall that  $\mathbf{rt}_R(i, j) = (w_{R[i, j]}^{-1}(i + j - 1), w_{R[i, j]}^{-1}(i + j))$ . Reasoning directly shows that in order for the first component to be  $i$ , the graph must satisfy the condition that for all  $j' < j$  we have that  $(i, j') \in R$ . Furthermore, in order to satisfy the condition that  $R[i, j]^{-1}(i + j) = i + 1$ , we cannot have that  $(i + 1, j) \in R$ , and this also imposes the requirement that for all  $j' < j$  we have that  $(i + 1, j') \in R$ .  $\square$

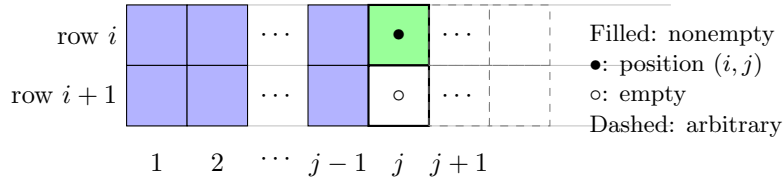


FIGURE 5. Configuration for rows  $i$  and  $i + 1$  for a ledge at  $(i, j)$ .

**Theorem 3.10.** The crystal divided difference operators satisfy the relations:

$$\begin{aligned} \mathfrak{F}^i \mathfrak{F}^i &= 0 \\ \mathfrak{F}^i \mathfrak{F}^j &= \mathfrak{F}^j \mathfrak{F}^i \quad \text{for } |i - j| > 1 \\ \mathfrak{F}^i \mathfrak{F}^{i+1} \mathfrak{F}^i &= \mathfrak{F}^{i+1} \mathfrak{F}^i \mathfrak{F}^{i+1} \end{aligned}$$

*Proof.* The first and second relations are not difficult. Otherwise, assume without loss of generality that  $i = 1$ . For an RC graph with precisely three rows, let us consider applying  $\mathfrak{F}^1 \mathfrak{F}^2 \mathfrak{F}^1$ . Suppose  $\mathbf{c}(w) = (a, b, c)$ . It is well known that if  $m = \min(a, b, c)$ , then the first  $m$  columns of  $R$  are completely full, hence without loss of generality let us assume that  $m = 0$ . The only way the braid relation can apply to yield a nonzero result, therefore, is if  $a > b > c = 0$ . Since this yields a dominant permutation, it follows that  $R$  is the unique RC graph for  $w$ . Applying the braid relation in either direction yields the complete sum of RC graphs for the permutation with code  $(0, a - 1, b - 2)$  by application of Corollary 3.5.2. By transfer, this result also applies to the last two or three rows of any RC graph with respect to the code.

Considering a general RC graph, we may similarly assume that  $\mathbf{c}_3(w) = 0$  by removing full columns, since only ledges will yield nonzero results. If there are extra elements in the first three rows that are not in the implied dominant block, then they all satisfy  $r + c - 1 > \mathbf{c}_r(w) + 1$ , where  $r \in \{1, 2, 3\}$  and the extra element is at row  $(r, c)$ , since they have come down from a row past row 4 (with respect to the principal RC graph). Elements with  $r + c - 1 > \mathbf{c}_1(w) + 1$  can be seen to have no essential interaction with rows 1, 2, and 3 and can be disregarded. We are left with the configuration in Figure 6.

In this situation, without ambiguity, application of the braid triple in either direction will delete the immobile  $(2, 1)$ ,  $(1, \mathbf{c}_2(w) + 1)$ , and  $(1, 1)$ . Without application of any lowering operators, simply deleting these elements yields the highest weight of the crystal component containing  $R$  with respect to the first three rows. Since we may apply  $\text{clip}^3(R)$  to obtain a Demazure crystal, the lowering operators transitively generate the sum. To see that we indeed get all of them, we note that for this highest weight  $R' = \text{clip}^3(R)$ , application of  $\mathfrak{F}^1 \mathfrak{F}^2 \mathfrak{F}^1$  should yield elements of the form

$$f_1^{a_1} f_2^{a_2} f_1^{a_3} R'$$

and for the other direction,

$$f_2^{b_1} f_1^{b_2} f_2^{b_3} R'$$

These are two distinct parametrizations of the Demazure crystal  $B_{s_1 s_2 s_1}(\lambda) = B_{s_2 s_1 s_2}(\lambda)$  with highest weight  $\lambda$ , yielding the same elements.  $\square$

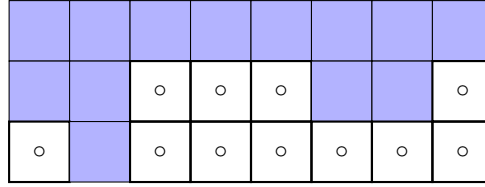


FIGURE 6. Configuration in the final steps of the proof of the braid relation.

**Definition 3.5.7.** Let  $R$  be an RC graph and let  $p$  be an integer. Define  $\text{clip}^p(R)$  to be the RC graph obtained as follows. Let  $R_{\leq p}$  be the subgraph of  $R$  consisting of rows  $1, 2, \dots, p$ , and suppose  $\mathbf{m}(w_{R_{\leq p}}) = p + m$ . If  $m \leq 0$ , set  $\text{clip}^p(R) = R_{\leq p}$ . Otherwise, define

$$\text{clip}^p(R) = \mathcal{Z}^m(R_{\leq p}, p + m)$$

Also, we define  $\text{trim}^p(R)$  as

$$\text{trim}^p(R) = \{(i - p, j) \mid (i, j) \in R, i > p\}$$

**Definition 3.5.8** (The natural map  $\mathcal{U}_i : \mathcal{BRC}(s_i w, n) \rightarrow \mathcal{BRC}(w, n)$ ). Suppose  $R_1, R_2$  are RC graphs and  $s_i$  is a left descent of  $w_{R_1}$ . Then  $I(R_2) \subseteq I(R_1)$ , and hence the inclusion  $R_2 \hookrightarrow R_1$  preserves right inversions. We can turn this into a canonical map

$$\mathcal{U}_i : \mathcal{BRC}(s_i w, n) \rightarrow \mathcal{BRC}(w, n)$$

by choosing  $R_1$  to be the unique RC graph in  $\mathcal{BRC}(w, n)$  such that  $R_2^T$  has a nonzero coefficient in  $\mathfrak{F}^i(R_1^T)$  (which exists by Lemma 3.5.1 and Theorem 3.9).

**Theorem 3.11.** Let  $w \in S_\infty$  satisfy  $\mathbf{m}(w) \leq n$  and suppose  $i$  is a left descent of  $w$ . Then we have a commutative diagram

$$\begin{array}{ccc} \mathcal{BRC}(s_i w, n) & \xrightarrow{\text{clip}^{n-1}} & \bigcup_{s_i w \xrightarrow{n} s_i w'} \mathcal{BRC}(s_i w', n-1) \\ \downarrow \mathcal{U}_i & & \downarrow \mathcal{U}_i \\ \mathcal{BRC}(w, n) & \xrightarrow{\text{clip}^{n-1}} & \bigcup_{w \xrightarrow{n} w'} \mathcal{BRC}(w', n-1) \end{array}$$

**Lemma 3.5.9.** *We have the following equations for an RC graph  $R$  and two integers  $p$  and  $q$ :*

$$\begin{aligned}\text{clip}^p(\text{clip}^{p+q}(R)) &= \text{clip}^p(R) \\ \text{trim}^p(\text{clip}^{p+q}(R)) &= \text{clip}^q(\text{trim}^p(R))\end{aligned}$$

and

$$\text{trim}^{p+q}(R) = \text{trim}^q(\text{trim}^p(R))$$

*Proof.* Suppose  $(R, n)$  is a bounded RC graph. We prove that  $\text{clip}^{n-2}(\text{clip}^{n-1}(R)) = \text{clip}^{n-2}(R)$ . For  $n = 2$ , this is trivial. As an additional base case, we also need  $n = 3$ , which is not trivial, but true because a bounded RC graph  $(R, 1)$  is uniquely determined by its size. We proceed by induction on  $n$ . Without loss of generality, assume that row  $n$  is empty. Then  $\text{clip}^{n-1}(R) = \mathcal{Z}(R)$ . We have

$$\begin{aligned}\text{clip}^{n-2}(R) &= \mathcal{Z}^2(R_{\leq n-2}, n) = \mathcal{Z}(\mathcal{Z}(R_{\leq n-2})) \\ \text{clip}^{n-2}(\text{clip}^{n-1}(R)) &= \mathcal{Z}(\mathcal{Z}(R)_{\leq n-2}, n-1)\end{aligned}$$

If  $m(w_{R_{\leq n-2}}) \leq n-1$ , then both sides are equal to  $\mathcal{Z}(R_{\leq n-2})$ . Otherwise, by Lemma 3.3.4, we have

$$\begin{aligned}\text{trim}(\text{clip}^{n-2}(R)) &= \text{trim}(\mathcal{Z}(\mathcal{Z}(R_{\leq n-2}))) = \mathcal{Z}(\mathcal{Z}(\text{trim}(R)_{\leq n-3})) \\ \text{trim}(\text{clip}^{n-2}(\text{clip}^{n-1}(R))) &= \mathcal{Z}(\mathcal{Z}(\text{trim}(R))_{\leq n-3}, n-2)\end{aligned}$$

Thus,  $\text{clip}^{n-2}(\text{clip}^{n-1}(R))$  and  $\text{clip}^{n-2}(R)$  agree on all rows except possibly the first row. We proceed by induction on the number of elements of  $R$  in the first row. For zero elements, the result is obvious. If we have proved the result for  $k-1$  elements in the first row, let  $(1, i)$  be the rightmost such element. Then  $R \setminus \{(1, i)\}$  has  $k-1$  elements in the first row, so by the inductive hypothesis,  $\text{clip}^{n-2}(\text{clip}^{n-1}(R \setminus \{(1, i)\})) = \text{clip}^{n-2}(R \setminus \{(1, i)\})$ . Applying Theorem 3.11, we see that adding back in the element  $(1, i)$  to both sides preserves equality, due to the commutativity of the diagram. This establishes the first equation. The second equation easily follows from repeated application of Lemma 3.3.4, and the third equation is the definition of  $\text{trim}$ .  $\square$

**Theorem 3.12.** *Let  $r > 0$  be an integer and suppose  $p \geq 0$  is an integer such that  $p \leq r$ . Then the map  $\mathcal{BRC}(r) \rightarrow \mathcal{BRC}(p) \times \mathcal{BRC}(r-p) \times S_\infty$  defined by*

$$(R, r) \mapsto (\text{clip}^p(R, r), \text{trim}^p(R, r), w_R)$$

*is injective.*

*Proof.* For  $p = 0$  this is trivial, and for  $p = 1$  this is due to the fact that any subset of the first row of an RC graph corresponds to a unique permutation, so that if we know  $\text{trim}^1(R, r) = (R', r-1)$  and we know  $w_R$ , then  $R$  is the unique RC graph such that the first row corresponds to the permutation  $u$  such that  $uw_{R'} = w_R$  and  $\text{trim}^1(R, r) = (R', r-1)$ .

For  $p = r-1$ , we use the fact that row  $r$  of a bounded RC graph  $(R, r)$  is uniquely determined by its weight. It therefore suffices to prove the result when this weight is 0, which is covered by Theorem 3.3. We have thus proved the theorem for  $r = 2$ .

For larger  $r$ , we prove the result by induction on  $p$ , keeping in mind the solutions for the cases  $p = 0, 1, r-1$ . We know that  $(R, r)$  is uniquely determined by  $(\text{clip}^{r-1}(R), w_R)$  and we may use the inductive hypothesis to reason that it is therefore uniquely determined by  $(\text{clip}^p(R), \text{trim}^p(\text{clip}^{r-1}(R)), w_R)$ . Furthermore, Let  $u = w_{\text{clip}^p(R)}$ . Then the pair  $(\text{trim}^{p-1}(\text{clip}^{r-1}(R)), u^{-1}w_R)$  uniquely determines  $\text{trim}^p(R)$  by the inductive hypothesis. Hence  $(\text{clip}^p(R), \text{trim}^p(R), w_R)$  uniquely determines  $(R, r)$ , establishing injectivity.  $\square$

### 3.6. Definition of the ring product.

**Definition 3.6.1.** Suppose we have two bounded RC graphs  $R_1$  with  $\text{ht}(R_1) = m$  and  $R_2$  with  $\text{ht}(R_2) = n$ . The product of these is defined by

$$R_1 \diamond R_2 = \sum_{\substack{\text{clip}^m(R')=R_1 \\ \text{trim}^n(R')=R_2}} R'$$

where  $R'$  ranges over bounded RC graphs with  $\text{ht}(R') = m+n$ .

Define a map  $D : \mathcal{BRC} \rightarrow \mathcal{D} \otimes \mathcal{D}$  by

$$D(R) = \Xi_{w_R}^{\text{ht}(R)} \otimes [\text{wt}(R)]$$

**Theorem 3.13.** *The product  $\diamond$  turns  $\mathcal{BRC}$  into a ring, and  $D : \mathcal{BRC} \rightarrow \mathcal{D} \otimes \mathcal{D}$  is a homomorphism of rings.*

*Proof.* What is in question is associativity. Suppose we have three bounded RC graphs  $R_1$  with  $\mathbf{ht}(R_1) = p$ ,  $R_2$  with  $\mathbf{ht}(R_2) = q$ , and  $R_3$  with  $\mathbf{ht}(R_3) = r$ , and we want to show that the order of bracketing the product is irrelevant. This is because if  $R_w$  is a term in the expansion of the product with  $\mathbf{ht}(R_w) = p + q + r$ , then

$$\mathbf{clip}^p(\mathbf{clip}^{p+q}(R_w)) = R_1 = \mathbf{clip}^p(R_w)$$

$$\mathbf{trim}^p(\mathbf{clip}^{p+q}(R_w)) = R_2 = \mathbf{clip}^q(\mathbf{trim}^p(R_w))$$

and

$$\mathbf{trim}^{p+q}(R_w) = R_3 = \mathbf{trim}^q(\mathbf{trim}^p(R_w))$$

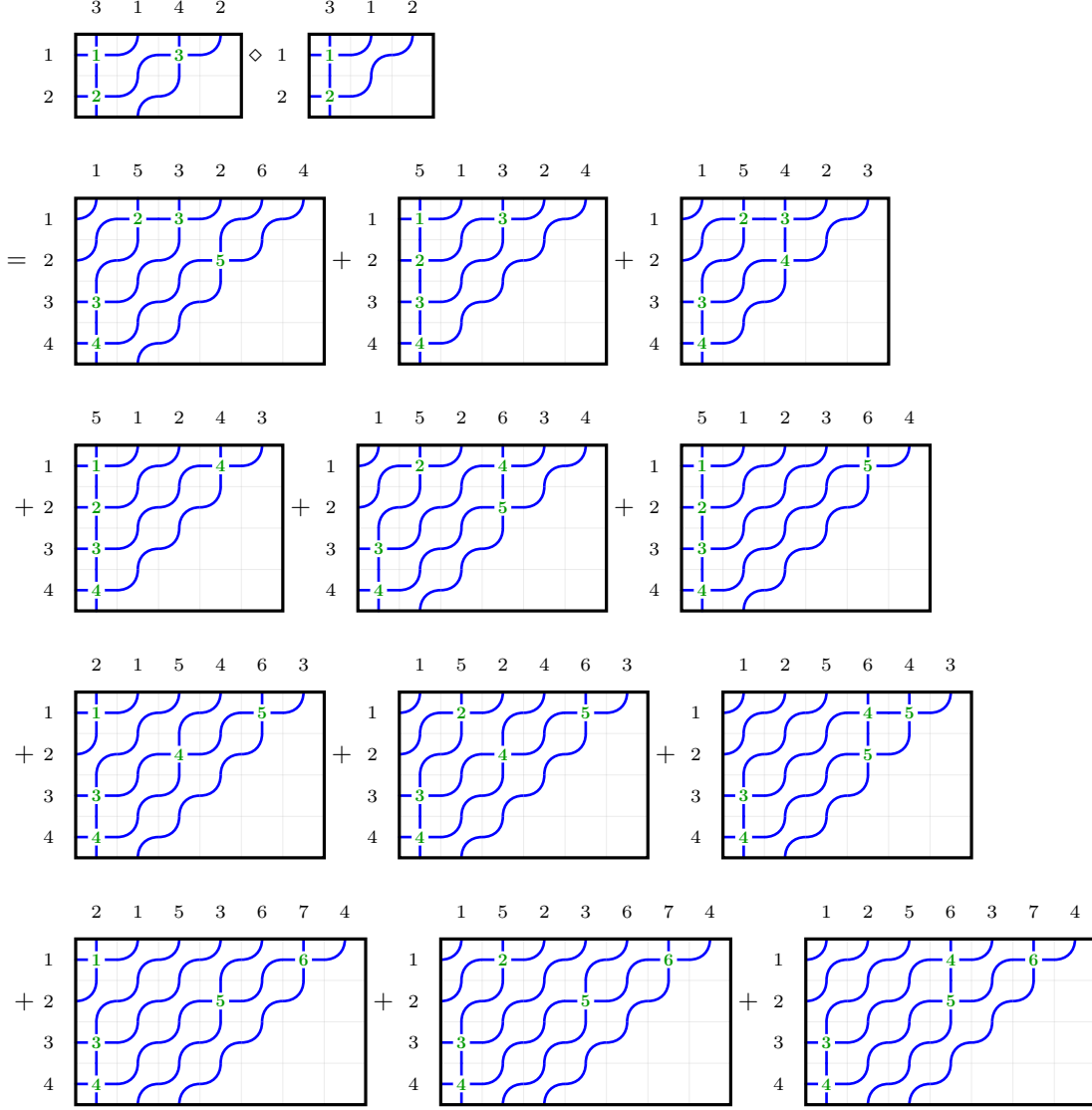
by Lemma 3.5.9, and each term in the expansion of the product has a coefficient of 1.

To prove the map  $D : \mathcal{BRC} \rightarrow \mathcal{D} \otimes \mathcal{D}$  is a homomorphism of rings, we utilize the formula for the coefficient  $d_{u,v}^w(p, q)$  as the coefficient of  $\mathfrak{S}_u(x_1, \dots, x_p)$  when we set  $x_{p+1} = \dots = x_{p+q} = 0$  in the polynomial

$$\partial^{\uparrow^p v} \mathfrak{S}_w(x_1, \dots, x_{p+q})$$

(that is, Theorem 2.6). We claim that if we fix an RC graph  $R_u$  for  $u$  and an RC graph  $R_v$  for  $v$ , then this coefficient is the same as the number of BRCs  $(R, p+q)$  for  $w$  such that  $\mathbf{trim}^p(R) = R_v$  and  $\mathbf{clip}^p(R) = R_u$ . If we assume that  $v$  is the identity, this follows from Theorem 3.4 and Theorem 3.3. The divided difference operator characterization means that for  $\ell(v) > 0$ , we can replace the empty space with any (shifted up) RC graph for  $v$  ( $R_v, q$ ) and get the result for  $\alpha$  as desired. Since the weight is also preserved in this construction, the result follows for  $D$  as well.  $\square$

**Example 3.6.2.** We compute the product of two bounded RC graphs  $(R_1, 2) \in \mathcal{BRC}(2413, 2)$  and  $(R_2, 2) \in \mathcal{BRC}(231, 2)$ :



**Definition 3.6.3.** Let  $\mathcal{R}$  be the subring generated by the single-row RC graphs  $\text{row}(i)$  for  $i \geq 0$ . Let  $a$  be a sequence of elements of a ring indexed by the nonnegative integers. For a permutation  $w$  and an integer  $n \geq \mathbf{m}(w)$ , define a function  $\Xi_w^n(a)$  By

$$\Xi_w^n(a) = \sum_{\alpha} d_{\alpha,w}^n a_{\alpha_1} \cdots a_{\alpha_n}$$

where the sum is over all weak compositions  $\alpha$  of length  $n$ , and  $d_{\alpha,w}^n$  is the coefficient of  $\alpha$  in  $\Xi_w^n \in \mathcal{D}$ .

**Proposition 3.6.4.** *We have that the elements*

$$\Xi_w^n(\text{row})$$

*as  $n$  ranges over all nonnegative integers  $w$  ranges over all permutations in  $S_{\infty}$  with  $n \geq \mathbf{m}(w)$  form a  $\mathbb{Z}$ -basis of  $\mathcal{R}$ , and  $\alpha : \mathcal{R} \rightarrow \mathcal{D}$  is an isomorphism of graded rings.*

*Proof.* Since  $\alpha(\Xi_w(\text{row})) = \Xi_w^n \in \mathcal{D}$ , the elements  $\Xi_w^n(\text{row})$  are linearly independent. Given that the images form a basis of  $\mathcal{D}$ , they must also span  $\mathcal{R}$  since  $\mathcal{D}$  is a free algebra, and hence there is a homomorphism backwards  $\mathcal{D} \rightarrow \mathcal{R}$  sending  $[i] \mapsto \text{row}(i)$  which is necessarily surjective. Thus, the elements  $\Xi_w^n(\text{row})$  form a  $\mathbb{Z}$ -basis of  $\mathcal{R}$ .  $\square$

**Definition 3.6.5.** Let  $\mathcal{C}$  be the two-sided ideal generated by differences

$$R_1 - R_2$$

where  $w_{R_1} = w_{R_2}$  and  $\text{ht}(R_1) = \text{ht}(R_2)$ .

An element of  $\mathcal{C}$  is called a *chute move element* if  $R_1$  and  $R_2$  differ by a single chute move. It is not difficult to see that the ideal  $\mathcal{C}$  is generated by chute move elements, at least as an ideal, since any two RC graphs with the same permutation and number of rows are connected by a sequence of chute moves by [2, Theorem 3.7]. We may distinguish between *crystal chute move elements*, where  $R_2 = f_i(R_1)$  for some  $i$ , and *transition chute move elements*, where  $R_2$  is obtained from  $R_1$  by a chute move that is not realized by a crystal operator.

It is known that the transitive closure of the relation  $R_1 \leq R_2$  if  $R_1$  is the result of apply a chute move to  $R_2$  is a partial order on the set of RC graphs for a fixed permutation and number of rows. For an RC graph  $R$ , we define  $C(R)$  to be the difference  $R - L(R)$ . Transition elements are  $L(R) - P(R)$ .

#### MULTICRYSTAL RAISING/LOWERING OPERATORS

By definition of the product, both crystal and transition chute move elements are preserved by left multiplication. By Theorem 3.8, it is clear that crystal chute move elements are preserved by right multiplication. It is less clear, but also true, that transition chute move elements are also preserved by right multiplication.

**Lemma 3.6.6.** *Suppose  $R_1$  and  $R_2$  differ by a single chute move at row  $i$ . Then for any RC graph  $R$ , the elements  $(R_1 - R_2) \diamond R$  and  $R \diamond (R_1 - R_2)$  are sums of chute move elements.*

*Proof.* For left muliplication,  $R_1$  and  $R_2$  are actually subgraphs of all resulting elements. For right multiplication, let  $R'$  be an RC graph in the product. Then there is a crystal isomorphism between a subset of the crystal components of RC graphs for  $w_{R'}$  and the entirety of the crystal components of RC graphs for  $w_{R_1} = w_{R_2}$ . Note that the chute moves form a basis over  $\mathbb{Z}$ , and hence over  $\mathbb{Q}$ . Thus, applying the right inverse map  $\mathcal{Z}$ ,  $R_1 - R_2$  restricted to a single permutation map to an element  $R'_1 - R'_2$ , which necessarily is a sum of chute moves  $\square$

**Theorem 3.14.**  *$\mathcal{BRC}$  decomposes as an internal direct sum*

$$\mathcal{R} \oplus \mathcal{C}$$

*and  $\mathcal{C}$  is an  $(\mathcal{R}, \mathcal{R})$ -bimodule generated by the chute move elements that is free as a left  $\mathcal{R}$ -module.*

*Proof.* For any RC graph with  $n$  rows for a permutation  $w$ , we have  $\alpha(\Xi_w^n(\mathbf{row})) = \alpha(R)$ , so that  $\Xi_w^n(\mathbf{row}) - R \in \mathcal{C}$ . It follows that

$$\mathcal{R} + \mathcal{C} = \mathcal{BRC}$$

and that  $\mathcal{R} \cap \mathcal{C} = 0$  since  $\alpha$  is injective on  $\mathcal{R}$  and vanishes on  $\mathcal{C}$ .  $\square$

Let us consider the associated graded ring  $\text{gr}_{\mathcal{C}}(\mathcal{BRC})$  with respect to the filtration induced by the ideal  $\mathcal{C}$ . We can view the degree  $k$  component as an RC graph  $R$  together with a choice of  $k$  rightmost simple chute moves in disjoint adjacent pairs of rows. Thus the degree 0 component is isomorphic to  $\mathcal{D}$ , whereas each higher component has more specificity with certain pairs of rows constrained to specific chute moves.

**Theorem 3.15.** *The associated graded ring  $\text{gr}_{\mathcal{C}}(\mathcal{BRC})$  has as a basis for its  $k$ th graded component equivalence classes of differences of RC graphs by applying  $k$  simultaneous rightmost simple chute moves (so that only those  $2k$  rows are specifically identified).*

Define a sequence  $\mathbf{wt}^*(R)$  to be the weight of  $R^T$ .

**Lemma 3.6.7.** *The map  $R \mapsto R^T$  is an isomorphism of Demazure crystals with the conjugate highest weight. Specifically,  $\mathcal{C}(R^T) \cong \mathcal{C}(R)^\#$ .*

**Definition 3.6.8.** Define a module  $\mathbb{Y}(\mathcal{BRC})$  by letting  $\mathbb{Y}(\mathcal{BRC}) = \{\mathbb{Y}(R) : R \in \mathcal{BRC}\}$  with the obvious scalar multiplication. Define also a bilinear product on  $\mathbb{Y}(\mathcal{BRC})$  by

$$\mathbb{Y}(R_1) \cdot \mathbb{Y}(R_2) = \mathbb{Y}(\mathbb{Y}(R_1) \diamond \mathbb{Y}(R_2))$$

Define an ideal  $Y \subseteq \mathcal{BRC}$  to be the ideal generated by the elements

$$R - \mathbb{Y}(R)$$

Then  $\mathbb{Y} : \mathcal{BRC} \rightarrow \mathcal{N}$  is a homomorphism of rings.

Is squash inserting?

Yes squash product is left insertion into the highest weight-tableau representation.

Define a module  $\mathbb{W}(\mathcal{BRC})$  and function

$$\mathbb{W} : \mathcal{BRC} \rightarrow \mathcal{P}$$

such that if

$$R = F\mathbb{Y}(R)$$

then

$$\mathbb{W}(R) = F\mathbb{Y}(B(\mathbf{wt}(R)))$$

Define

$$\mathbb{Y}(R_1) \diamond \mathbb{Y}(R_2) = \mathbb{Y}(R_1 \diamond R_2)$$

$$\mathbb{W}(R_1)\mathbb{W}(R_2) = \mathbb{W}(R_1 \diamond R_2)$$

The function

$$\mathcal{BRC} \rightarrow \mathcal{N} \otimes_{\mathcal{BRC}} \mathcal{P}$$

is an isomorphism of rings.

In terms of crystals,

$$\mathbb{W}(R_2 \otimes R_1) = \mathbb{W}(R_1)\mathbb{W}(R_2)$$

where multiplication is in the plactic algebra. Domdom

Take the free associative algebra generated by RC graphs for elementary symmetric polynomials. Any weakly increasing product can be simplified to an  $n$ -elementary product. Distinct descents commute.

Schubert crystal, lowest weight is a weak composition

Truncation at a lowest weight is a schub?

**3.7. Relation to Little bumps.** Define a function  $\mathcal{L} : \mathcal{BRC}^0(n) \rightarrow \mathcal{BRC}(n+1)$  as follows. Assume  $n = \mathbf{m}(w_R)$ , and suppose  $\mathbf{rt}_R(i, j) = (n, n+1)$ , where  $i < n$ . Set

$$R' = (R \setminus \{(i, j)\}) \cup \{(n, 1)\}$$

Then define

$$\mathcal{L}(R, n) = ((i \overset{n-1}{\rightsquigarrow} R') \setminus \{(n, 1)\}, n+1)$$

Then define  $\mathcal{Z} : \mathcal{BRC}^0(n) \rightarrow \mathcal{BRC}(n-1)$  by iterating  $\mathcal{L}$  and stopping as soon as the result has  $\mathbf{m}(w_R) \leq n-1$ .

**Proposition 3.7.1.** *Let  $(R, n) \in \mathcal{BRC}^0(n)$  be a bounded RC graph such that  $\mathbf{m}(w_R) = n$ . Suppose*

$$\text{word}(R) = a_1 a_2 \cdots a_k$$

and

$$\text{seq}(R) = r_1 r_2 \cdots r_k$$

suppose  $\mathbf{rt}_R(i, j) = (n, n+1)$ , and let  $p$  be the index such that  $r_p = i$  and  $r_p + j - 1 = a_p$ . Then

$$\text{word}(\mathcal{L}(R, n)) = \text{little}_p(\text{word}(R, n))$$

*Proof.* Consider the biword

$$\begin{array}{cccccccc} r_1 & r_2 & \cdots & r_{p-1} & r_p & r_{p+1} & \cdots & r_k \\ a_1 & a_2 & \cdots & a_{p-1} & a_p & a_{p+1} & \cdots & a_k \end{array}$$

The first deletion yields

$$\begin{array}{cccccccc} r_1 & r_2 & \cdots & r_{p-1} & r_{p+1} & \cdots & r_k & n \\ a_1 & a_2 & \cdots & a_{p-1} & a_{p+1} & \cdots & a_k & n \end{array}$$

Necessarily, we must have  $a_p > 1$ . If we have  $a_p = 1$ , then we would have  $r_p = 1$ . The only way for position  $(1, 1)$  in an RC graph to be a right descent is if it is the unique right descent. By assumption, that descent would have to be  $n$ , so that  $n = 1$ . In that case, however, it would not be possible for the last row to be empty.

We also must have that  $r_p < a_p$ , because there is a sequence of chute moves involving this crossing that moves it to position  $(n, 1)$  by [2, Theorem 3.7]. Assume first that  $p = k$ . Then the insertion algorithm will insert  $a_p - 1 = n - 1$  into row  $r_k$ . If this word is reduced, then we are done, and this clearly coincides with the Little bump. If it is not reduced, the descent  $n - 1$  occurs somewhere to the left, say at position  $j$ .

The insertion algorithm would delete this letter then try to insert another one. However, we can see that recursively this is the same as applying  $\mathcal{Z}_+$  to the biword obtained by removing all letters after position  $j$  and then reinserting them afterwards. By the inductive hypothesis, this coincides with applying the Little bump at position  $j$ , which would indeed be the next step in the recursion of applying the Little bump at position  $k$ . Thus, the two coincide by induction.  $\square$

**Theorem 3.16** ([7, Theorem 4.4]). *Let  $w$  be a reduced word for a permutation  $w \in S_\infty$ . Then*

$$Q(w) = Q(\text{little}_p(w))$$

for any valid  $p$ .

**Corollary 3.7.2.**  $\mathcal{L} : \mathcal{BRC}^0(n) \rightarrow \mathcal{BRC}(n+1)$  is a weight-preserving injection that preserves the recording tableau under the Edelman-Greene correspondence.

**Corollary 3.7.3.**

$$\mathcal{L} : \mathcal{RC}(w, n)^0 \rightarrow \bigcup_{w \xrightarrow{n} w'} \mathcal{RC}(w', n-1)$$

is a weight-preserving isomorphism of crystal graphs.

**Corollary 3.7.4.** We have the equality

$$\mathcal{L} = \mathcal{Z}$$

### 3.8. Relation to the bijection with bumpless pipe dreams.

**Definition 3.8.1.** Denote by  $\mathcal{BPD}(w, n)$  the set of (reduced)  $n$ -row bumpless pipe dreams for a permutation  $w$ , where  $n \geq \mathfrak{m}(w)$ . These are  $n \times N$  grids, where  $N$  is at least the length of  $w$ , populated with 6 possible tiles, shown in Figure 7, satisfying the conditions that pipes must enter from the bottom and exit on the right, and no two pipes may cross twice. We may assign a permutation to such a BPD as follows.

Let  $(B, n)$  be an  $n$ -row BPD. Let  $c_1, \dots, c_m$  be the columns such that the pipes on the bottom edge have an entrance from the bottom. If the pipe coming from  $c_i$  exits on row  $j$  on the right, then  $w(c_i) = j$ . To fill in the remaining elements of the permutation, we set  $w(m+k) = d_k$ , where  $d_1, \dots, d_k$  are the remaining columns with no entrance in increasing order.

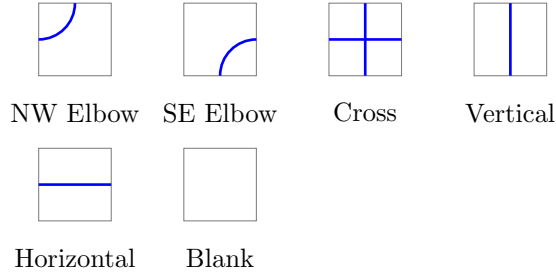


FIGURE 7. The six possible tiles in bumpless pipe dreams. Pipes enter from the bottom and exit at the right.

**Lemma 3.8.2** ([11, Theorem 3.6]). *Let  $(B, N)$  be an ordinary reduced BPD for a permutation  $w$ , so that  $w(M) = M$  for all  $M > N$  and  $B$  is  $N \times N$ . Let  $n \geq \mathfrak{m}(w)$  be an integer. Then the BPD  $B'$  obtained by only retaining the first  $n$  rows of  $B$  satisfies  $w(B', n) = w(B, N)$  and uniquely determines  $B$  under this assumption.*

**Definition 3.8.3.** There is a bijection  $\varphi : \mathcal{BPD}(w, n) \rightarrow \mathcal{RC}(w, n)$ , where  $w \in S_n$ , defined in [6] that preserves weight. It is viewed as “canonical” because it also provides bijective correspondences between certain insertion/bumping operations on BPDs and RC graphs, showing that they agree in a strong way. In light of Lemma 3.8.2, we may extend this bijection to  $w \in S_\infty$  with  $\mathfrak{m}(w) \leq n$  by first expanding the BPD to a square BPD with sufficiently many rows and columns, then applying the bijection, and finally truncating the resulting RC graph to  $n$  rows.



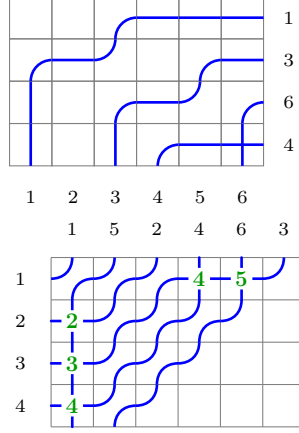


FIGURE 8. An example of a 4-row bumpless pipe dream for a permutation of length 6. Pipes enter from the bottom at columns 1, 3, 4, and 6, and exit on the right at the labeled rows. The associated permutation is  $[1, 3, 6, 4, 2, 5]$ . The associated RC graph under the bijection  $\varphi$  is shown as well, with crosses in positions  $(1, 4)$ ,  $(1, 5)$ ,  $(2, 1)$ ,  $(3, 1)$ , and  $(4, 1)$ .

**Definition 3.8.4.** We define a function  $\mathbf{t} : \mathcal{BPD}(n)^0 \rightarrow \mathcal{BPD}(n-1)$ , found in [10] in a more general context, as follows. Given a bumpless pipe dream  $(B, n)$  with no blank tiles in row  $n$ , we simply remove row  $n$  to obtain  $B'$ . Then

$$\mathbf{t}(B, n) = (B', n-1)$$

One may ask oneself here whether anything changes at all. Indeed, all that changes are the labels of the incoming pipes, as shown in Figure 9, and this only happens if  $\mathbf{m}(w) = n$ .

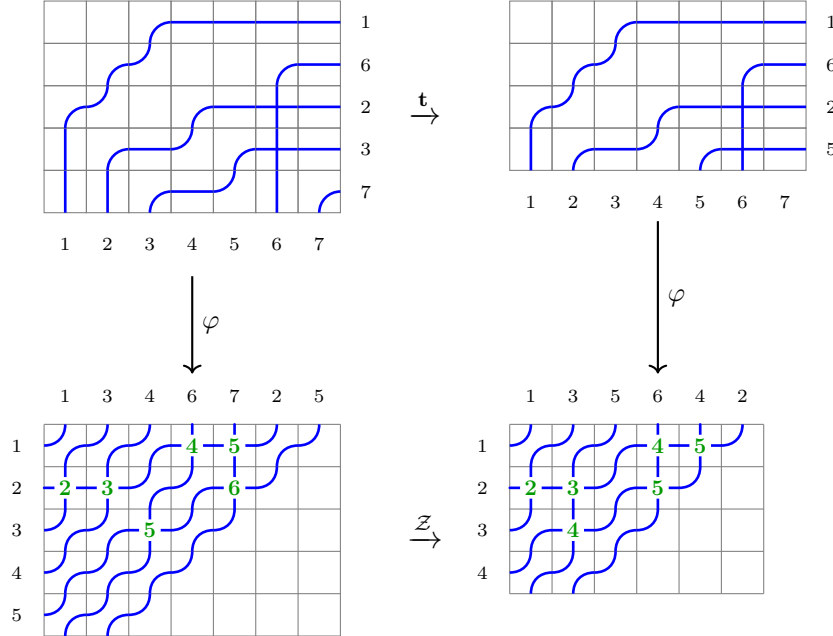


FIGURE 9. The  $\mathbf{t}$  transformation on a bumpless pipe dream with permutation  $[1, 6, 2, 3, 7, 4, 5]$ . The bottom row is removed, resulting in a BPD with one fewer row and permutation  $[1, 6, 2, 5, 3, 4]$ . The associated RC graphs under the bijection are shown below with the corresponding  $\mathcal{Z}$  transformation.

**Theorem 3.17.** *We have the formula*

$$\varphi \circ \mathbf{t} = \mathcal{Z} \circ \varphi$$

*Proof.* Little bumps on last descent □

**Definition 3.8.5.** Let  $(B, p)$  be a BPD and let  $(C, q)$  be another BPD. We define an operation  $B \curlywedge C$  as follows. First, let  $\varphi(B) = ((a_1, r_1), (a_2, r_2), \dots, (a_m, r_m))$ . Then define

$$B \curlywedge^p C = \Delta(((a_1, r_1), (a_2, r_2), \dots, (a_m, r_m)), C \uparrow^p)$$

We may define a ring product on  $\mathcal{BPD}$ , somewhat independently of the bijection, by declaring that

$$(B, p) \diamond (C, q) = \sum_{\mathbf{t}^N(B', p+N) = (B, n)} (B' \curlywedge^p C, p+q)$$

Squash prod BPDs

**Theorem 3.18.** *The Gao-Huang bijection  $\varphi : \mathcal{BPD} \rightarrow \mathcal{BRC}$  is an isomorphism of rings.*

### 3.9. gaboop.

**Proposition 3.9.1.** *Suppose  $(R, n)$  is a bounded RC graph and  $i$  is an integer such that  $1 \leq i \leq n$  and  $i$  is a descent of  $w_R$ . Then there is a unique bounded RC graph  $(R', n-1)$  such that  $\text{clip}^{i-1}(R) = \text{clip}^{i-1}(R')$ ,  $\text{trim}^{i+1}(R) = \text{trim}^i(R')$ , and  $w_R \searrow^i w_{R'}$ .*

*Proof.* The product  $\text{clip}^i(R) \diamond \text{trim}^{i+1}(R)$  has an interpretation as uniquely determined pair of RC graphs in the coproduct decomposition of  $R$ . This coproduct further decomposes to

$$\text{clip}^{i-1}(R) \otimes R[i] \otimes \text{trim}^{i+1}(R)$$

Removing the middle factor, by associativity, gives us that there is an RC graph  $R'$  such that  $w_R \searrow^i w_{R'}$  and  $R'$  decomposes into

$$\text{clip}^{i-1}(R) \otimes \text{trim}^{i+1}(R)$$

□

**Definition 3.9.2.** Let  $R$  be an RC graph. We define a  $\{0, 1\}$ -valued function  $\mathfrak{F}_\mu^w$  for a dominant permutation  $\mu$  and an arbitrary permutation  $w$  via the following construction. For integers  $p, q$ , let  $d[p, q] = s_p s_{p+1} \cdots s_{p+q-1}$  be a product of simple reflections.

Let  $m$  be the length of  $\mathbf{c}^*(\mu)$ . Initialize  $R_0 = R$ . For each  $i$  from 1 to  $m$ :

- (1) If  $\mathbf{c}_i^*(\mu) > \mathbf{c}_i^*(w)$ , terminate and set  $\mathfrak{F}_\mu^w R = 0$ .
- (2) Otherwise, let  $k = \mathbf{c}_i^*(w) - \mathbf{c}_i^*(\mu)$  and apply the crystal divided difference operator:

$$R' = \mathfrak{F}^{d[\mathbf{c}_i^*(\mu)+1, k]} R_{i-1}$$

- (3) If row  $\mathbf{c}_i^*(\mu) + 1$  is not empty in  $R'$ , terminate and set  $\mathfrak{F}_\mu^w R = 0$ .
- (4) If the row is empty, define the next state:

$$R_i = P_{(\mathbf{c}_i^*(\mu)+1)}(R')$$

If the loop completes, for any remaining indices  $i > m$  where  $\mathbf{c}_i^*(w) > 0$ , incrementally update the graph:

$$R_i = \mathfrak{F}^{d[i+1-m, \mathbf{c}_i^*(w)]} R_{i-1}$$

Finally, define  $\mathfrak{F}_\mu^w R = 1$  if  $R_N = \emptyset$  for sufficiently large  $N$ , and  $\mathfrak{F}_\mu^w R = 0$  otherwise.

**Theorem 3.19.** *Let  $\mu$  be a dominant permutation and let  $v, w$  be permutations such that  $\ell(\mu) + \ell(v) = \ell(w)$ . Then*

$$c_{\mu, v}^w = \sum_{R \in \mathcal{RC}(v)} \mathfrak{F}_\mu^w(R)$$

**3.10. The squash product.** Given RC graphs  $R_1$  and  $R_2$ , define their star product  $R_1 \star R_2$  as follows. First define

$$\uparrow^k R = \{(i, j+k) \mid (i, j) \in R\}$$

for any RC graph  $R$  and integer  $k \geq 0$ . Then choose the smallest integer  $N$  such that  $N > i+j$  for all  $(i, j) \in R_2$ , and define

$$R_1 \star R_2 = R_1 \cup \uparrow^N R_2$$

Since  $R_1 \star R_2$  is itself an RC graph, it of course already has an induced crystal structure. However, we will be bounding the crystal structure at some fixed size  $n$ .

For two EG words  $u$  and  $v$ , define

$$\mathcal{C}(u) \star_n \mathcal{C}(v) = \{(R_1 \star R_2, n) \mid R_1 \in \mathcal{C}(u), R_2 \in \mathcal{C}(v)\}$$

It is possible (almost certain, actually) that  $(R_1 \star R_2, n)$  is not technically a bounded RC graph, even if  $n \geq \mathbf{m}(w_{R_1}), \mathbf{m}(w_{R_2})$ . However, the crystal operators are still well-defined on this set.

**Theorem 3.20.** *Suppose  $(R_1, n)$  and  $(R_2, n)$  are bounded RC graphs. Then we have that there is a homomorphism of crystal graphs*

$$\mathcal{C}(u, n) \otimes \mathcal{C}(v, n) \rightarrow \mathcal{C}(u) \star_n \mathcal{C}(v)$$

*given by  $R_1 \otimes R_2 \mapsto R_1 \star R_2$ . If  $R_2$  is  $n$ -Grassmannian, then this is a weight-preserving isomorphism of crystal graphs.*

*Proof.* Clearly the map is a weight preserving bijection. We need only show that it commutes with the crystal operators. Let  $R_1 \in \mathcal{C}(u, n)$  and  $R_2 \in \mathcal{C}(v, n)$ , and let  $R = R_1 \star R_2$ . Consider  $f_i(R_1 \otimes R_2)$ . If  $\varphi_i(R_1) > \varepsilon_i(R_2)$ , then the unpaired elements in row  $i$  in  $R_1$  exhaust the unpaired elements in row  $i+1$  in  $R_2$ . Therefore, only elements of  $R_1$  are affected by  $f_i$ , as in the definition of the tensor product. If instead  $\varphi_i(R_1) \leq \varepsilon_i(R_2)$ , then all unpaired elements of  $R_1$  in row  $i$  are paired with elements of  $R_2$  in row  $i+1$ , and so only elements of  $R_2$  are affected by  $f_i$ . The same reasoning applies to  $e_i$ .  $\square$

Note that this homomorphism of crystal graphs need not be an isomorphism, because the star product may have more operators that apply.

**Definition 3.10.1.** We define the *squash product* of two bounded RC graphs  $(R_1, n)$  and  $(R_2, n)$  to be the bounded RC graph

$$(R_1, n) \boxtimes (R_2, n) = (\text{clip}^n(R_1 \star R_2), n)$$

**Proposition 3.10.2.** *The squash product  $\boxtimes$  is associative.*

*Proof.* Note that

$$(R_1 \star R_2) \star R_3 = R_1 \star (R_2 \star R_3)$$

$\square$

**Theorem 3.21.** *Suppose that  $u$  and  $v$  are permutations,  $\mathbf{m}(u) \leq n$ , and  $\mathbf{m}(v) = n$ , and  $v$  is Grassmannian. Then*

$$\mathcal{S}_u(n) \boxtimes \mathcal{S}_v(n) = \sum_w c_{u,v}^w \mathcal{S}_w(n)$$

where  $c_{u,v}^w$  is the Schubert structure constant.

*Proof.* The star product  $\mathcal{RC}(u) \star_n \mathcal{RC}(v)$  is isomorphic in each component as a crystal to  $\mathcal{RC}(u) \otimes \mathcal{RC}(v)$  by Theorem 3.20. Also, the sum of these RC graphs is precisely

$$\mathcal{S}_{u \uparrow^M v}(n+N)$$

for sufficiently large  $M$  and  $N$ . Since  $v$  is Grassmannian, if we zero out the variables  $n+1, \dots, n+N$  in the corresponding Schubert polynomial we obtain the desired product, since the  $\mathfrak{S}_u$  component is stable and each zeroing of the Grassmannian component yields the same Schur polynomial with one fewer variable.

Since the squash product is obtained by iterating  $\mathcal{Z}$ , by Theorem 3.4 we have the result.  $\square$

**Definition 3.10.3.** Let the  $k$ -plactic algebra  $\mathcal{P}_k$  be the algebra generated by the symbols  $i_k$  for  $0 < i \leq k$  subject to the Knuth relations. There is an injection  $R_T : \mathcal{P}_k^{op} \rightarrow \mathcal{RC}$  which sends each reverse tableau to a well defined RC graph for the corresponding  $k$ -Grassmannian permutation. Let  $\mathcal{G}(k)$  be the set of bounded RC graphs  $R$  with  $\text{ht}(R) = k$  such that  $w_R$  has no descents  $i$  with  $i < k$ . Let  $I_G$  be the two-sided ideal generated by bounded RC graphs  $R$  with  $\text{ht}(R) = n$  such that  $w_R$  has a descent  $i$  with  $i < n$ .

**Theorem 3.22.** (1) *The map  $R_T : \mathcal{P}_k^{op} \rightarrow \mathcal{BRC}_k$  is an injective homomorphism of rings when  $\mathcal{BRC}$  is given the squash product, which maps the domain bijectively onto  $\mathcal{G}(k)$ .*  
 (2) *The quotient ring  $\mathcal{BRC}/I_G$  is isomorphic to the dual of  $\mathcal{P}_k^{op}$  as a bialgebra with the coproduct implied by Schensted insertion.*

**Definition 3.10.4.** Define  $\Delta_G : \mathcal{BRC} \rightarrow \mathcal{BRC} \otimes \mathcal{BRC}/I_G$  by

$$\Delta_G(R, n) = \sum_{(R_1, n) \boxtimes (R_2, n) = (R, n)}^n (R_1, n) \otimes (R_2, n)$$

**Theorem 3.23.** *The function  $\Delta_G$  is a homomorphism of rings from  $\mathcal{BRC}$  to  $\mathcal{BRC} \otimes \mathcal{BRC}/I_G$ .*

Grassmannian mimic dual algebra formula.

#### 4. QUASISYMMETRIC FUNCTIONS

Consider the algebra  $\mathcal{D}$  in the word basis. There is a homomorphism of rings to the ring of noncommutative symmetric functions  $\text{NSym}[t]$  with an indeterminate adjoined given by sending the generator  $[0] \mapsto t$  and the remaining generators  $[i] \mapsto S_i$ . Let  $J_\alpha(t)$  be the image of the Schubert basis element  $\Xi_w^n$  under this homomorphism, where  $\alpha$  is a (strong) composition with  $\ell(\alpha) = n$  and

$$\mathfrak{c}(w) = \alpha$$

**Proposition 4.0.1.** *We have that the elements  $J_\alpha(t)$  as  $\alpha$  ranges over all compositions form a basis of  $\text{NSym}[t]$  over  $\mathbb{Z}[t]$ .*

*Proof.* The basis  $\Xi_w^n$  is triangular in the word basis. Thus, the image under the homomorphism of  $\text{NSym}$  clearly generates the ring as a module over  $\mathbb{Z}[t]$ . The leading term of the image of  $\Xi_w^n$  where  $\mathfrak{c}(w) = \alpha$  with  $\ell(\alpha) = n$  is  $S_\alpha$ , the set of which form an additive basis for the ring, from which the claim that they form a basis follows.  $\square$

To compute the dual basis in  $\text{QSym}[t]$ , we need to introduce a nonstandard grading. This is a  $\mathbb{N}^2$ -grading, where the degree of the monomial quasisymmetric function  $M_\alpha$  is  $(|\alpha|, \ell(\alpha))$ . The indeterminate  $t$ , rather than contributing to the first component of the degree, contributes to the second component. Thus, the dual basis element  $t^k \mathcal{J}_\alpha(t)$  is sent to a polynomial of degree  $|\alpha|$  in  $\mathcal{A}_{k+\ell(\alpha)}$  under the homomorphism dual to the one above.

**Proposition 4.0.2.** *Under the injective homomorphism  $\text{QSym}[t] \rightarrow \mathcal{A}$ , the element  $t^k M_\alpha$  is sent to  $M_\alpha(x_1, \dots, x_k)$  in  $\mathcal{A}_{k+\ell(\alpha)}$ .*

Consider  $\mathcal{BRC}$  as a left module over  $\mathcal{D}$ . The homomorphism  $\mathcal{D} \rightarrow \text{NSym}[t]$  induces a homomorphism to a quotient module

$$\mathcal{BRC} \rightarrow \widetilde{\mathcal{BRC}}$$

We can interpret the elements of  $\widetilde{\mathcal{BRC}}$  as sets of ordered pairs  $(i, j)$  and an associated height  $\text{ht}(R)$  as before. However, the following requirements are imposed:

- (1) If  $\text{ht}(R) = n$ , then for each  $i$  with  $1 \leq i \leq n$  there exists at least one  $j$  such that  $(i, j) \in R$ .
- (2) There exists a  $k$  such that there is a connected permutation  $w$  for which

$$w_R = \uparrow^k(w)$$

## REFERENCES

- [1] ASSAF, S., AND SCHILLING, A. A Demazure crystal construction for Schubert polynomials. *Algebraic Combinatorics* 1, 2 (2018), 225–247.
- [2] BERGERON, N., AND BILLEY, S. RC-graphs and Schubert polynomials. *Experimental Math.* 2, 4 (1993), 257–269.
- [3] BERGERON, N., AND SOTTILE, F. Schubert polynomials, the Bruhat order, and the geometry of flag manifolds. *Duke Math. J.* 95, 2 (1998), 373–423.
- [4] BERGERON, N., AND SOTTILE, F. Skew Schubert functions and the Pieri formula for flag manifolds. *Trans. Amer. Math. Soc.* 354, 2 (2001), 651–673.
- [5] EDELMAN, P., AND GREENE, C. Balanced tableaux. *Advances in Mathematics* 63, 1 (1987), 42–99.
- [6] GAO, Y., AND HUANG, D. The canonical bijection between pipe dreams and bumpless pipe dreams. *International Mathematics Research Notices* 2023, 21 (November 2023), 18629–18663.
- [7] HAMAKER, Z., AND YOUNG, B. Relating Edelman–Greene insertion to the Little map. *Journal of Algebraic Combinatorics* 40, 3 (2014), 693–710.
- [8] MORSE, J., AND SCHILLING, A. Crystal approach to affine Schubert calculus. *International Mathematics Research Notices* 2016, 8 (2016), 2239–2294.
- [9] SAMUEL, M. J. A Molev-Sagan type formula for double Schubert polynomials. *J. Pure Appl. Algebra* 228, 7 (2024), 107636.
- [10] WEIGANDT, A. Bumpless pipe dreams and alternating sign matrices. *Journal of Combinatorial Theory, Series A* 182 (2021), 105470.
- [11] YU, T. Embedding Bumpless Pipedreams as Bruhat Chains. *International Mathematics Research Notices* 2025, 22 (2025), rnaf336.