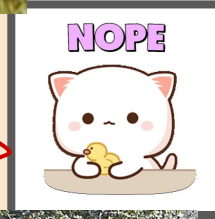
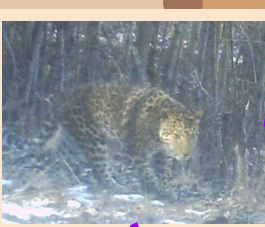


LeOpard Link (LOL)



Adjacency Matrix

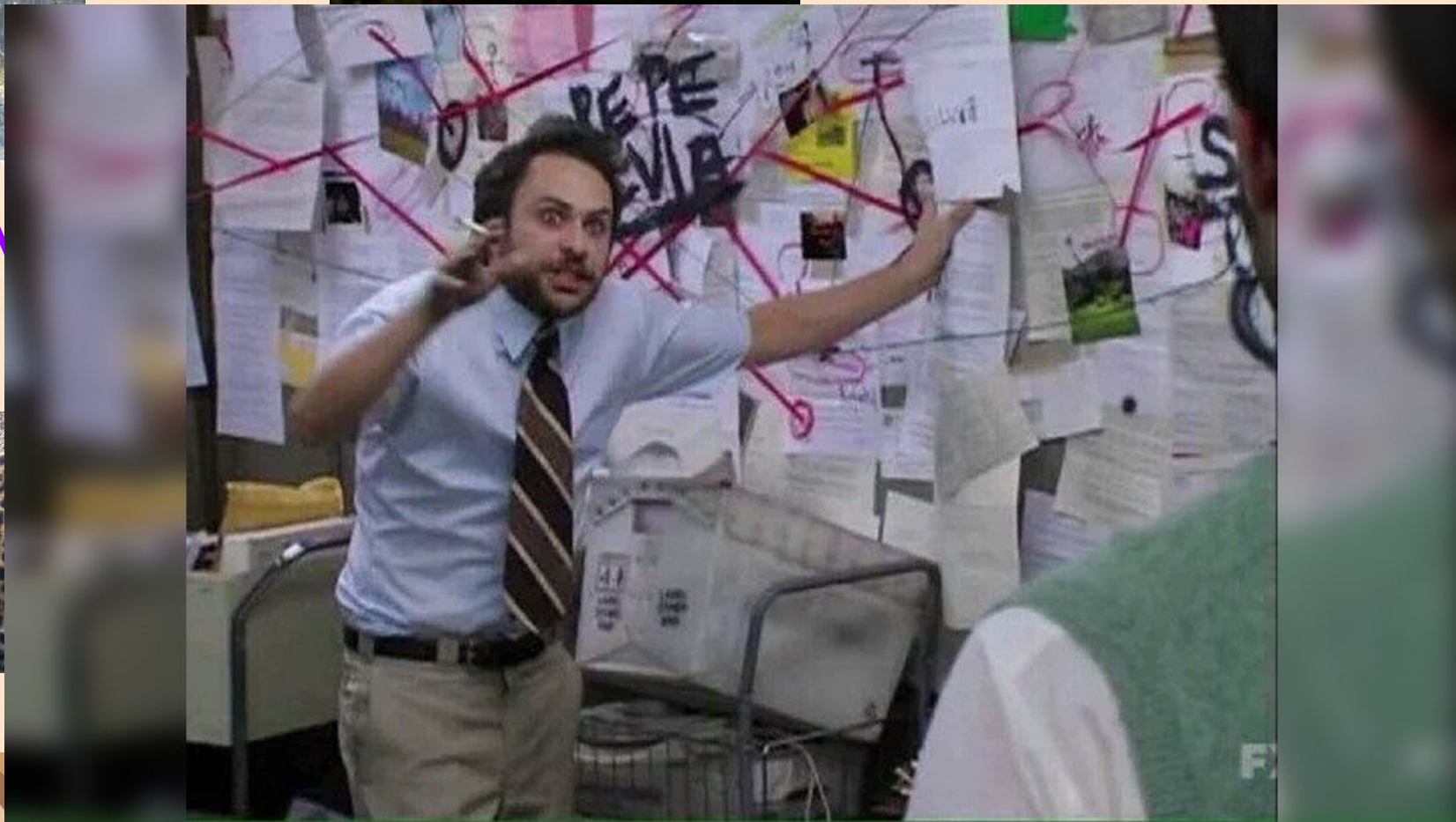


Researchers who use wildlife camera traps end up with a myriad of images or videos such as these ones.

They spend hours comparing two images at a time deciding is picture 1 showing the same individual as picture 2?

After this lengthy process, there remains the task of visualizing this network of relationships between images to identify individual critters.

Our project is trying to achieve one objective: create a user-friendly interface to visualize the matrix of relationships between images to identify individuals.



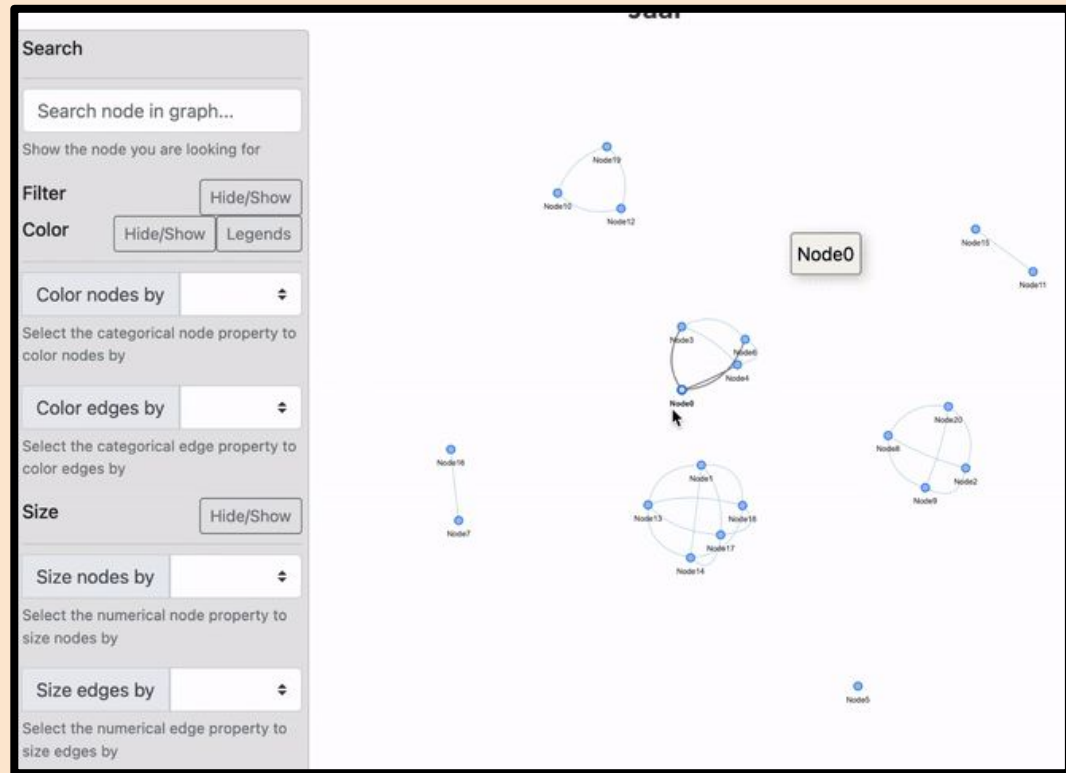
Plotly

- Too many line of code! (22 line)
- Run on localhost, can be embedded in our UI
- Not very pretty but interactive
- Very up to date(3day ago), mature



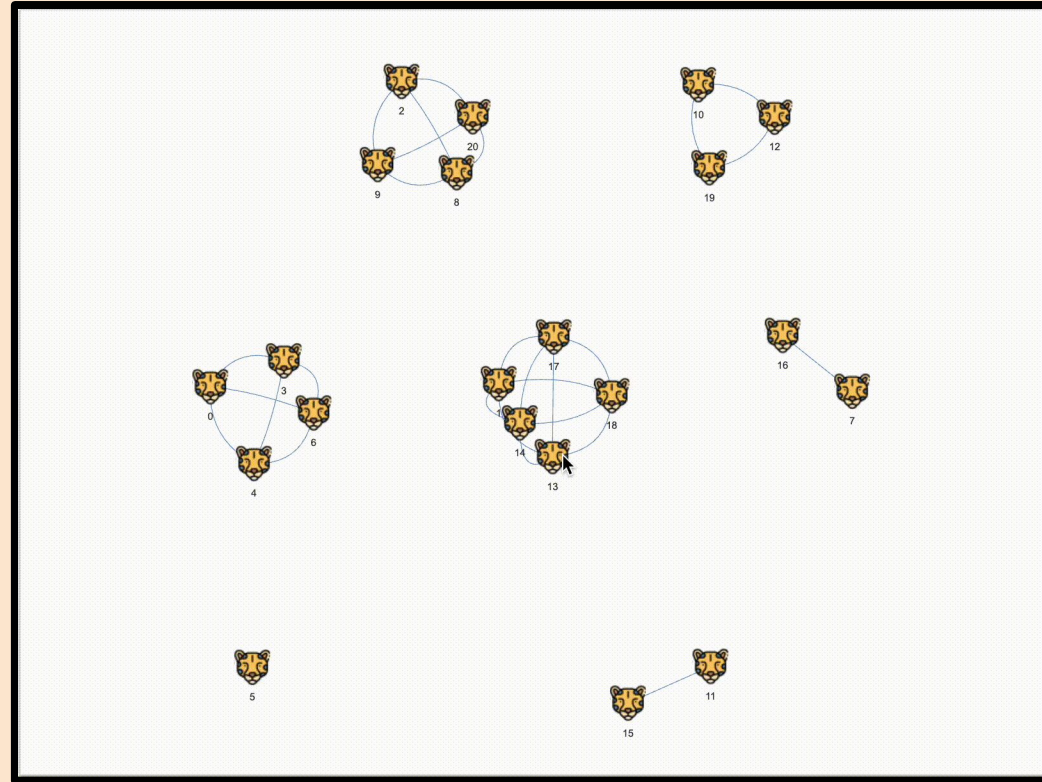
Jaal

- Single line coding
`Jaal(edge_G_df, node_G_df).plot()`
- Run on localhost, can be embedded in our UI
- Figures elegant and interactive
- Most recent commit in 7 months - maintained well



PyVis

- Easy to iteratively add nodes and edges
- Scales well (into the millions of nodes & edges)
- Interactive & a lot of customizability
- Most recent release ~2 years ago



Summary



Rubric	Plotly	Jaal	PyVis
<ul style="list-style-type: none">Is it easy to use?<ul style="list-style-type: none"><i>How many lines of code?</i><i>Is it fast?</i>	✗	✓	✓ ...sort of
<ul style="list-style-type: none">How does it work with our UI? (Is it in HTML?)	✓	✓	✓
<ul style="list-style-type: none">Figures beautiful? Interactive?	✗	✓	✓
<ul style="list-style-type: none">Is the package maintained well and updated regularly?	✓	✓ ...sort of	✗