

## Story Writing



**Instruction:** Write a story about a bear.

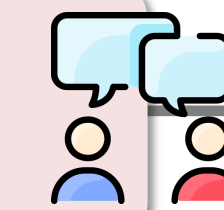
### Output (Direct):

- The old bear ambled through the morning mist, his paws silent on the forest floor despite his enormous size. He'd walked this path for fifteen years, from the berry patches [...]
- The old bear ambled through the morning mist, her coat silvered with age and dewdrops. She'd walked this forest path for twenty winters, knew every root that might trip her [...]
- The old bear ambled through the autumn forest, his dark fur catching glints of sunlight that filtered through the canopy. He'd walked this path for fifteen years, from the rushing [...]

### Output (VS):

- Bernard the bear worked as a tax accountant in downtown Seattle, commuting daily in his modified SUV with extra-large seats. His colleagues had long stopped staring at his massive paws [...]
- The constellation of Ursa Major dimmed as its spirit descended to Earth. The Star Bear's paws touched down in a moonlit glade where an ancient summoning circle glowed with ethereal fire [...]
- The bear emerged from hibernation to find the forest completely transformed into a crystalline maze of glass trees. Each trunk reflected infinite versions of himself, fragmenting his identity into countless possibilities [...]

## Dialogue Simulation



**Instruction:** Simulate a persuader (A) and a persuadee (B) in donation persuasion.

### Output (Direct):

**A:** ...Have you heard much about Save the Children before?

**B:** Yeah,... Do you think they're one of the better ones to support?

**A:** Yeah, ..., they have a solid track record.

**B:** I'd probably feel okay donating around \$5 [...]

### Output (VS):

**A:** ...Have you ever donated to...

**B:** Can't afford donations right now...

**A:** ...even just a few cents if you want...

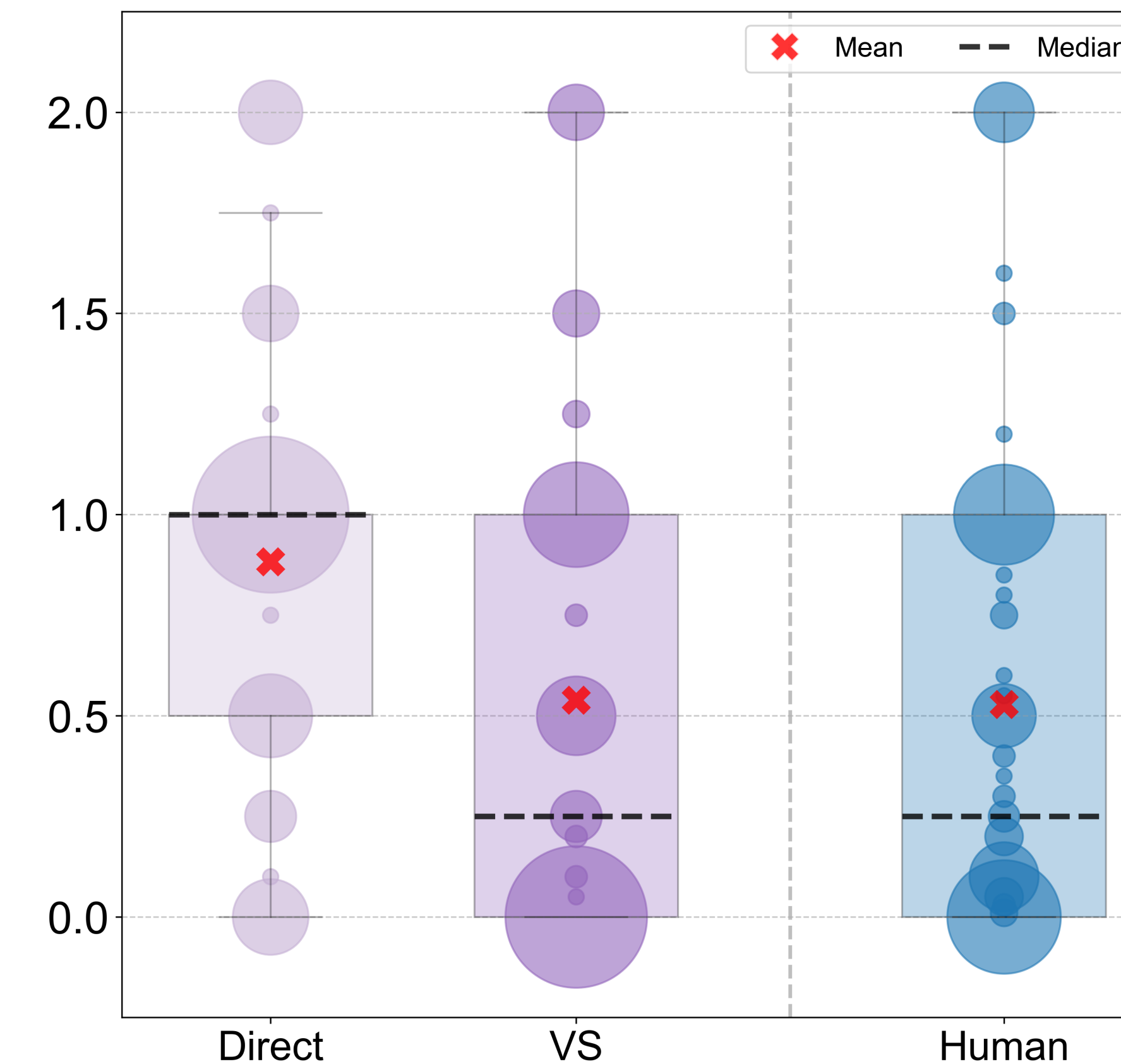
**B:** That's fair. Maybe I could spare like 10 cents?

**A:** It will be deducted from your task payment.

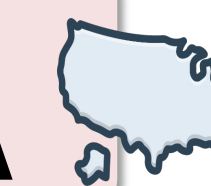
**B:** Actually, thinking about it—maybe I should just keep the full \$2. Groceries are tight...

**A:** Totally understandable! [...]

### Simulated Donation Amount (\$)



## Enumerative Open-Ended QA



**Instruction:** Name a US state.

