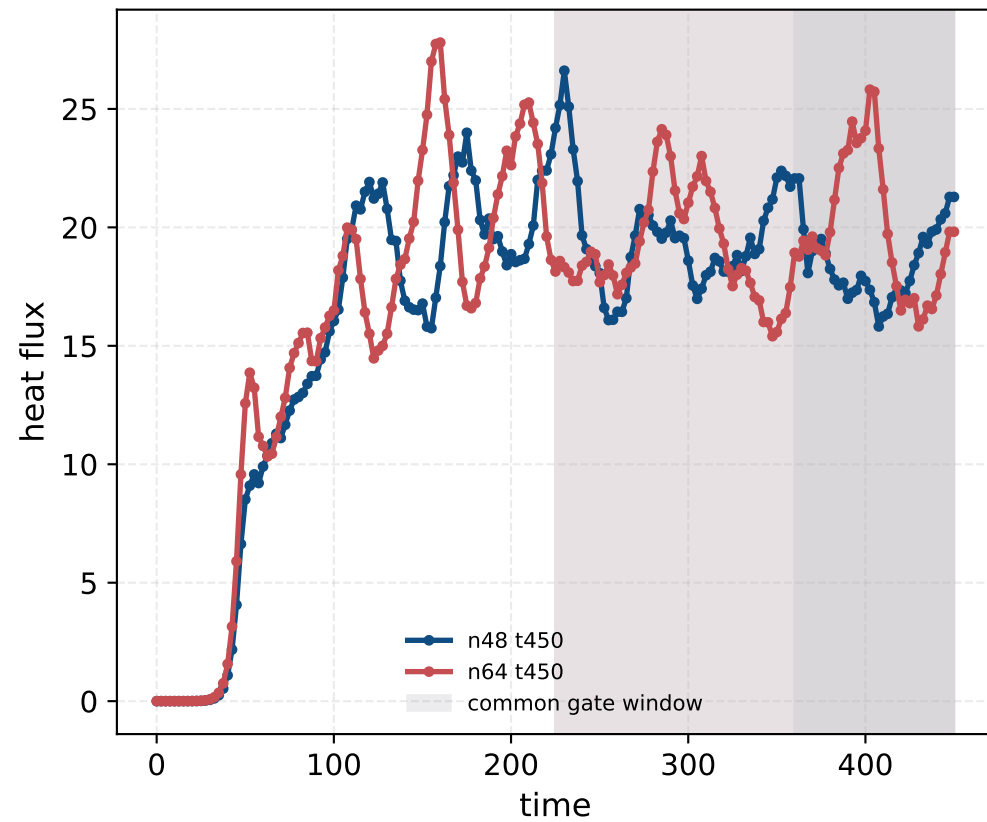
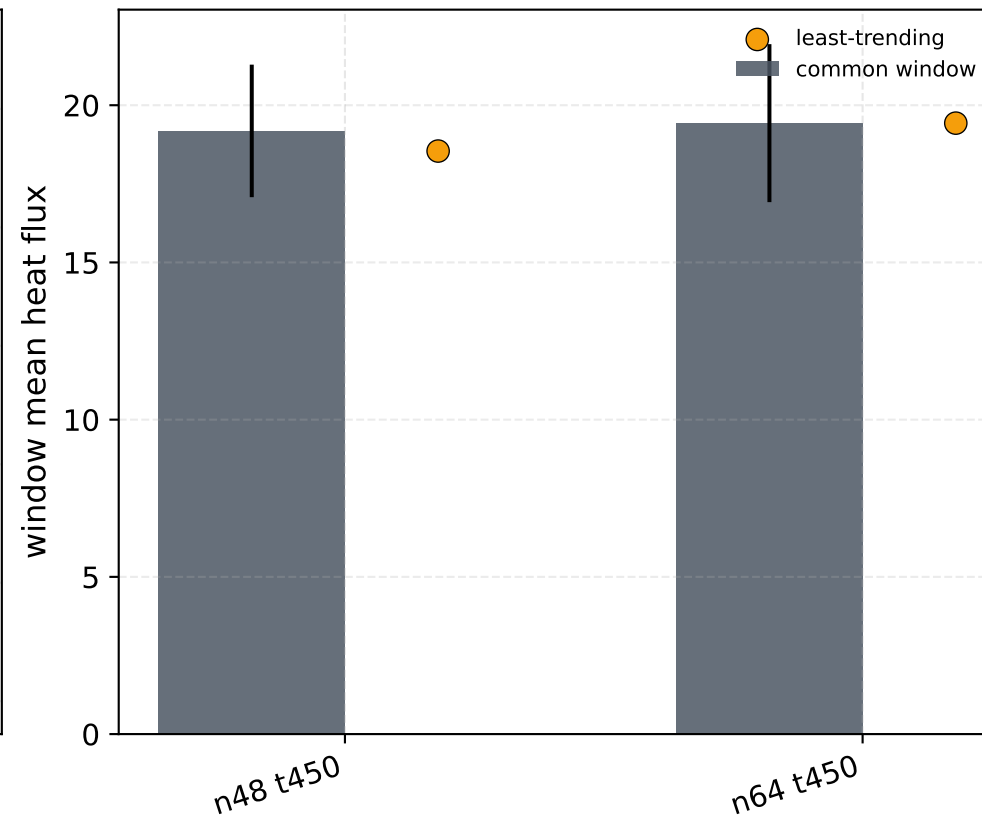


Circular tokamak external VMEC nonlinear t450 high-grid convergence

Nonlinear traces



Grid-refined window means



Gate status: PASS
common rel. grid diff: 0.013
least-window rel. grid diff: 0.047
allowed grid diff: 0.150
common start fraction: 0.50

Failed metrics:
- none

Interpretation:
finite external-VMEC pilot
with passing late-window and
grid agreement; candidate
transport holdout pending
calibration admission.