

Installation Steps on Windows platform:

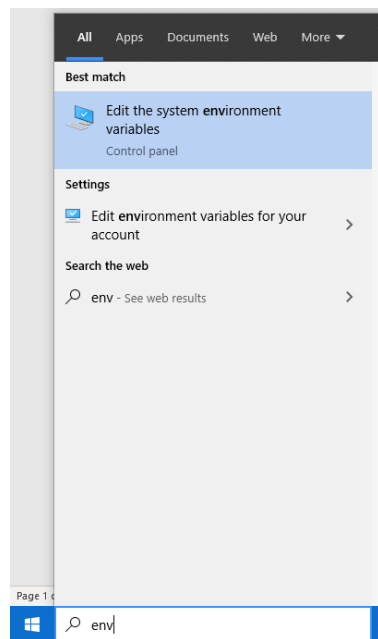
1) Install Graphviz

Graphviz is the underlying software in ReNView for generating graphs using data processed by ReNView.

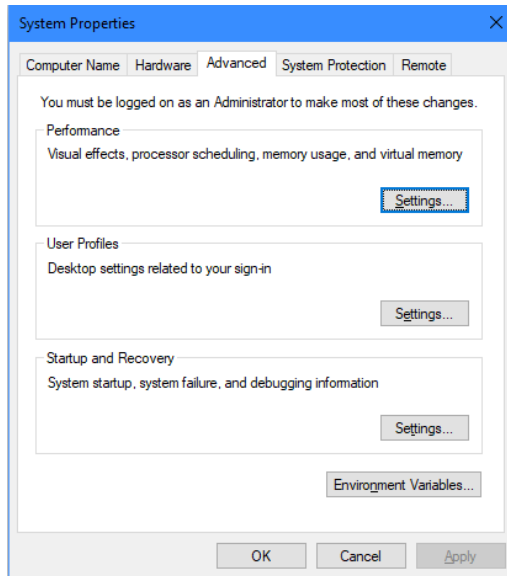
- a. Download and install graphviz from the following link:
https://graphviz.gitlab.io/pages/Download/Download_windows.html
- b. Once installed, check that you have a bin folder at the following path in case of default installation:
C:\Program Files (x86)\Graphviz2.38\bin
- c. Check if you have dot.exe files in the above folder. This ensures that Graphviz was installed correctly.

2) Add Graphviz folder to your environment variables

- a. In the search bar, type environment variables and select 'Edit the system environment variables'



- b. Click on 'Environment Variables'



- c. Add to 'Path' system variable the path to the bin folder of Graphviz
C:\Program Files (x86)\Graphviz2.38\bin
This allows Windows to know when a call to one of the Graphviz algorithms is made.

3) Install renview

Run **pip install renview** or **pip install --target=TARGET_FOLDER_PATH renview**

This installs the renview distributable to the default or target folder.

- 4) Open an Anaconda prompt window, navigate to the folder where renview has been installed and type the following command.

```
python run.py
```

This reads the example_ammonia directory and generates results for the network in a new directory named 'results'.

- 5) Within the results folder, you will find a svg file corresponding the normalization specified in the run.py file. You can view this svg file in any internet browser e.g. Google Chrome or Mozilla Firefox.