

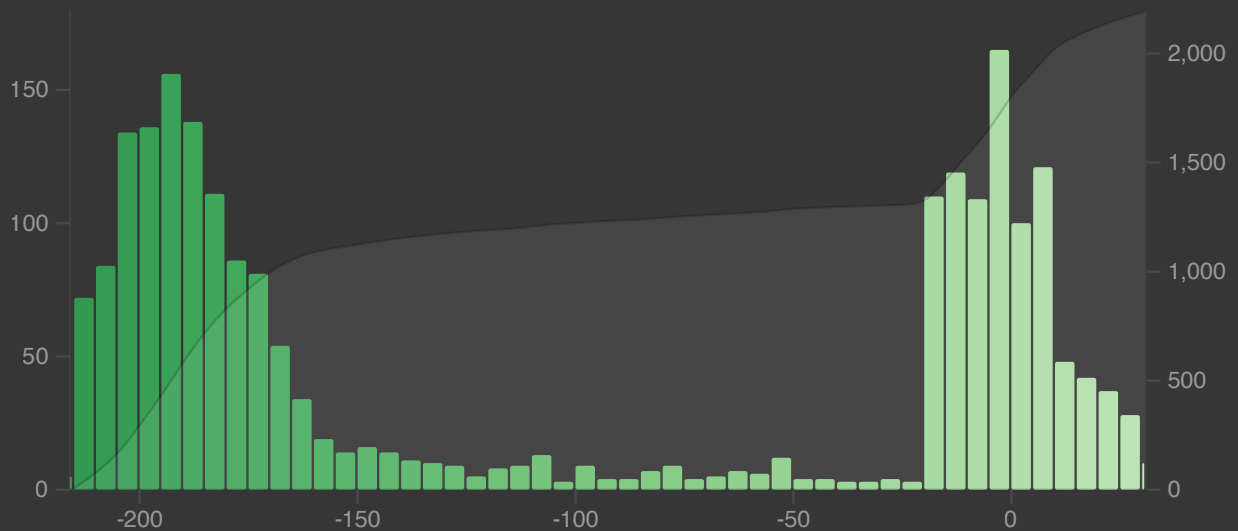
Today

No cards have been studied today.

Future Due

The number of reviews due in the future.

☒ Backlog ☒ 1 month ☐ 3 months ☐ 1 year ☐ all



Total: 2,199 reviews

Average: 9 reviews/day

Due tomorrow: 13 reviews

Daily load: 199 reviews/day

Calendar

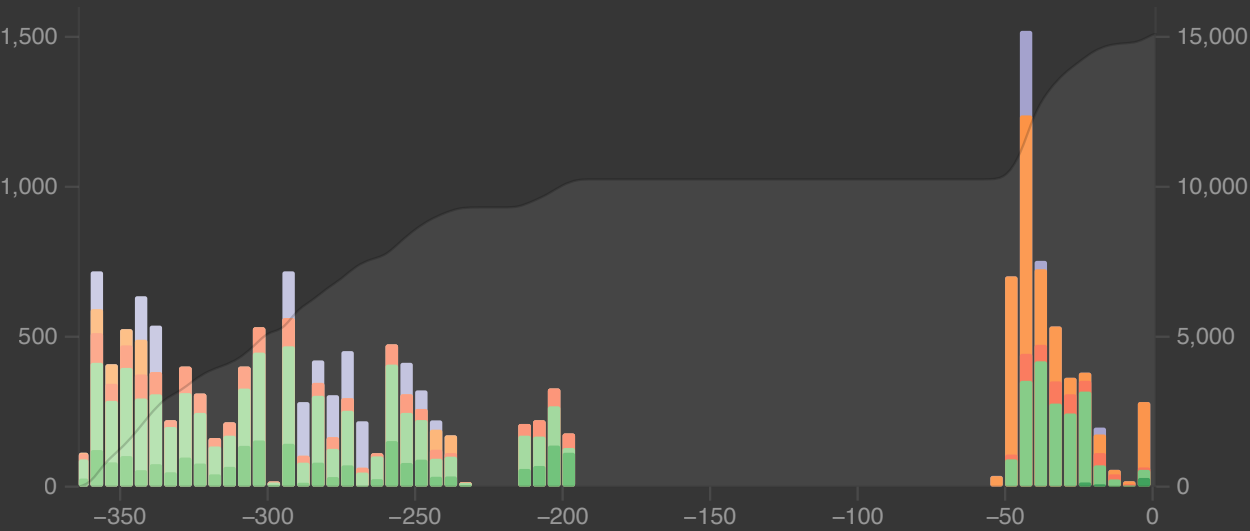
◀ 2026 ▶



Reviews

The number of questions you have answered.

☐ Time ☐ 1 month ☐ 3 months ☒ 1 year



Days studied: 164 of 365 (44.93%)

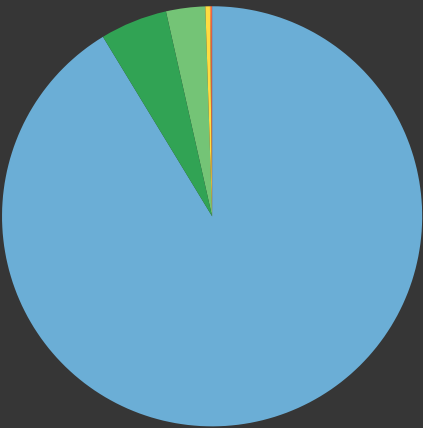
Total: 15,087 reviews

Average over period: 41 reviews/day

Average for days studied: 92 reviews/day

Card Counts

☒ Separate suspended/buried cards

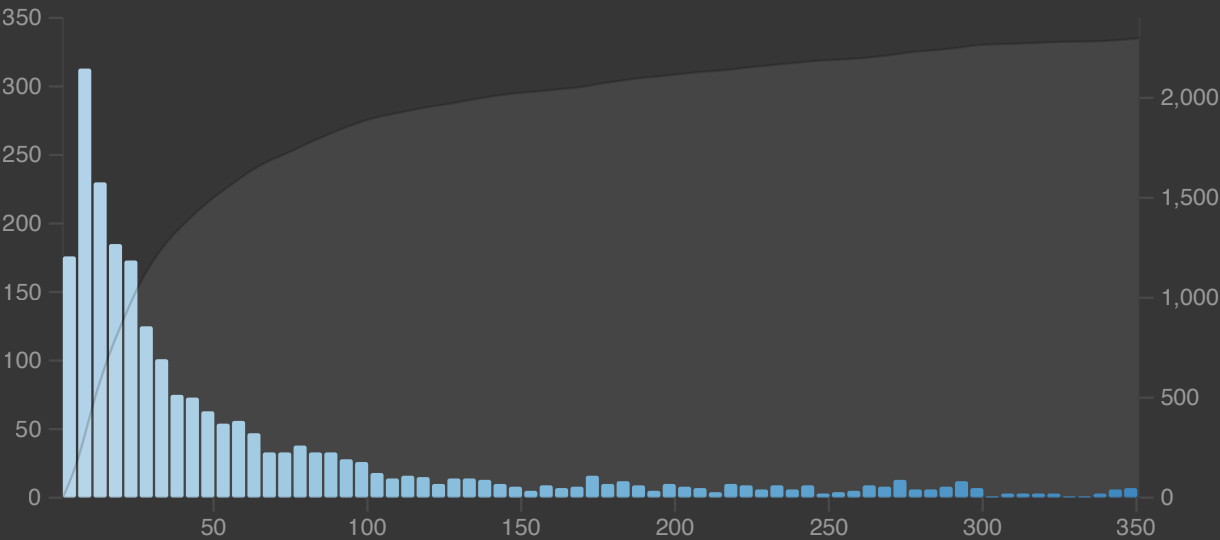


New	26,689	91.3%
Learning	25	0.09%
Relearning	23	0.08%
Young	881	3.01%
Mature	1,511	5.17%
Suspended	102	0.35%
Buried	0	0%
Total	29,231	

Review Intervals

Delays until review cards are shown again.

☐ 1 month ☐ 50% ☒ 95% ☐ all

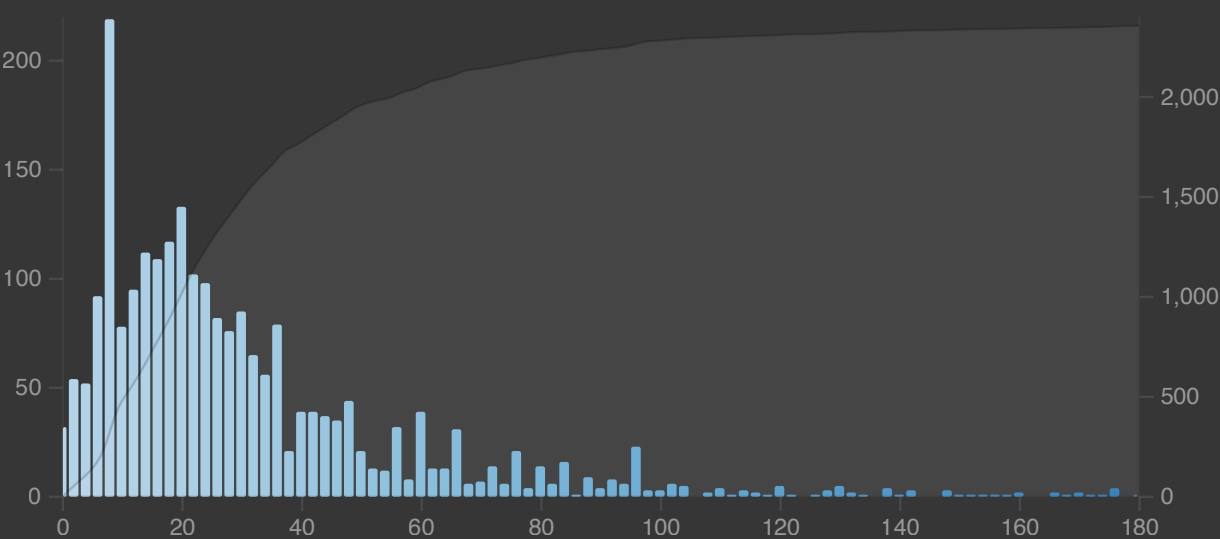


Median interval: 1.02 months

Card Stability

The delay at which retrievability falls to 90%.

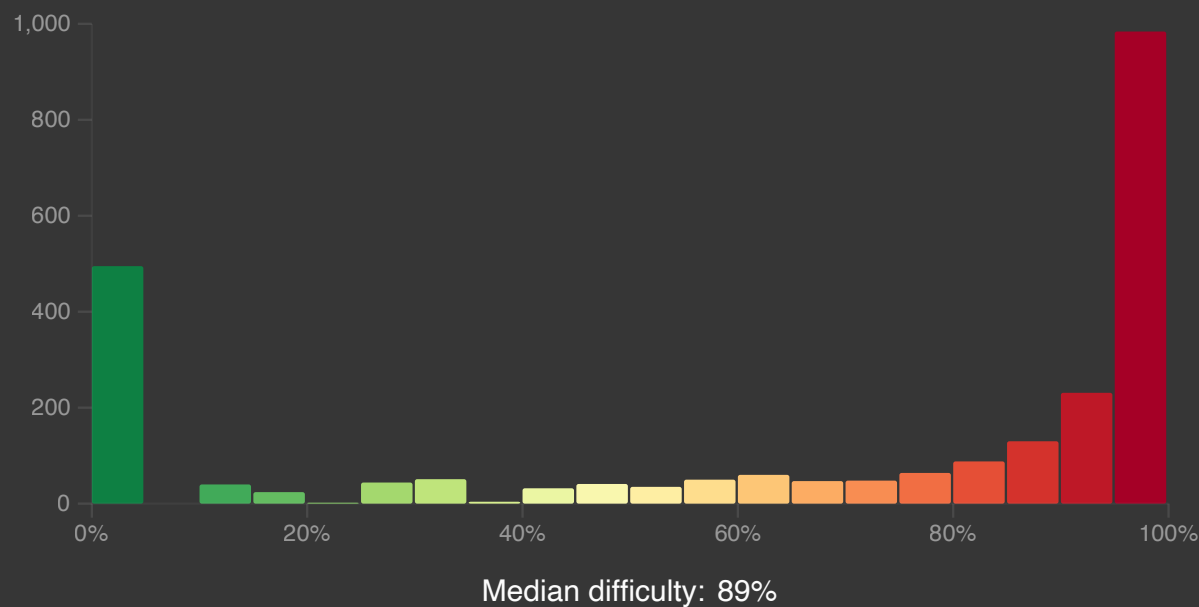
☐ 1 month ☐ 50% ☒ 95% ☐ all



Median stability: 23 days

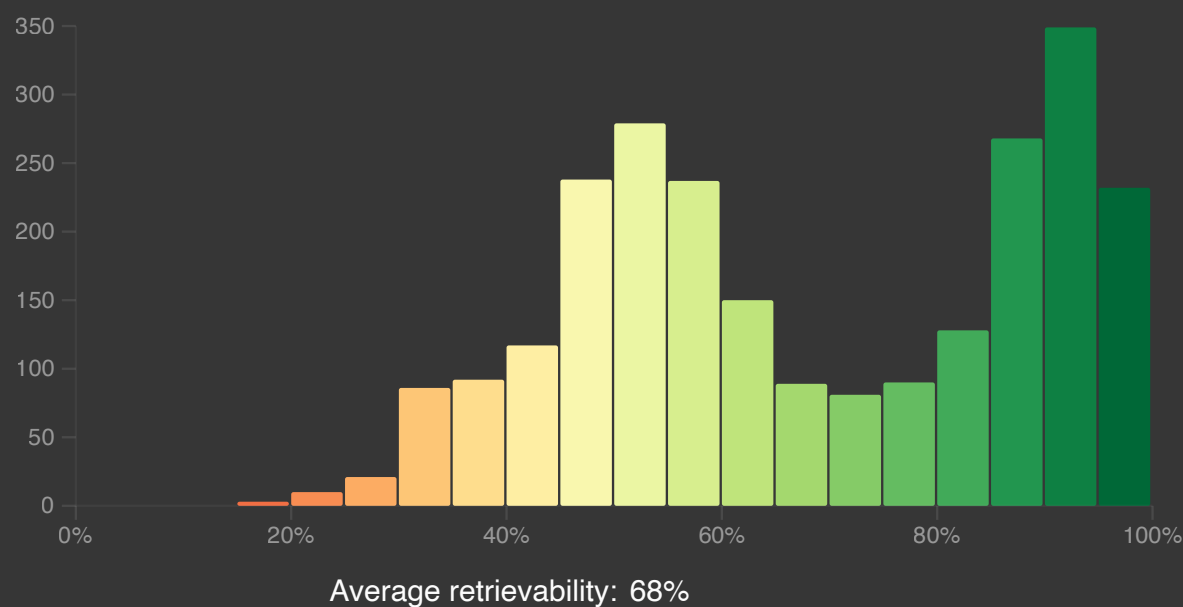
Card Difficulty

The higher the difficulty, the slower stability will increase.



Card Retrievability

The probability of recalling a card today.



Estimated total knowledge: 1,688 cards / 1,645 notes

Retention



Pass rate of cards with an interval ≥ 1 day.

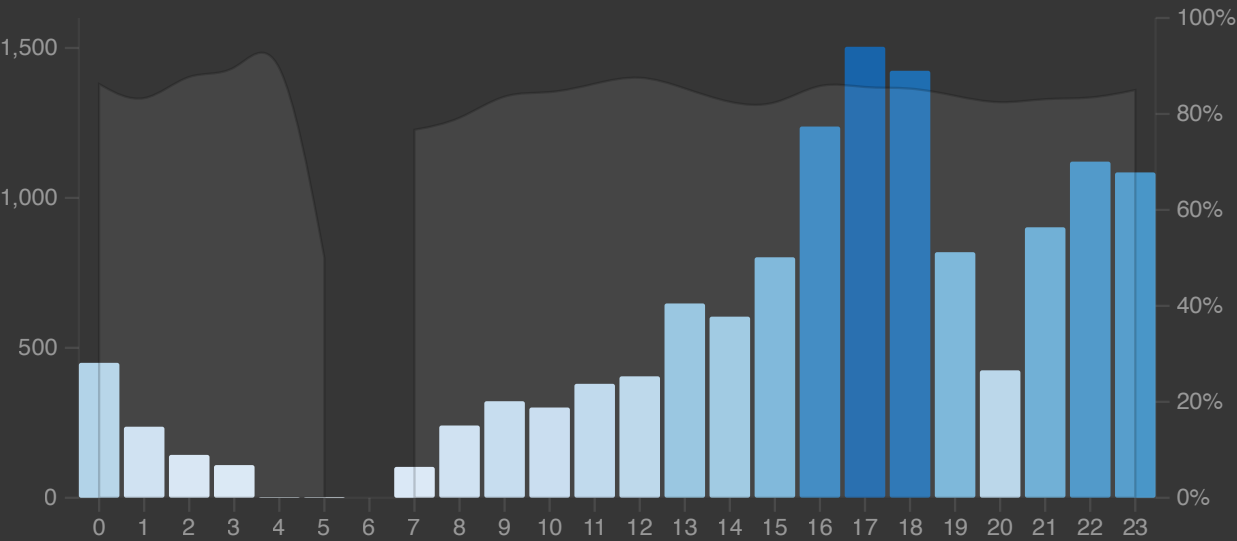
☐ Young ☐ Mature ☒ All

	Young	Mature	Total	Count
Today	N/A	N/A	N/A	0
Yesterday	N/A	N/A	N/A	0
Last week	88.9%	24.1%	55.4%	56
Last month	86.4%	55.4%	83.5%	601
Last year	88.8%	75.3%	85.3%	10,505

Hourly Breakdown

Review success rate for each hour of the day.

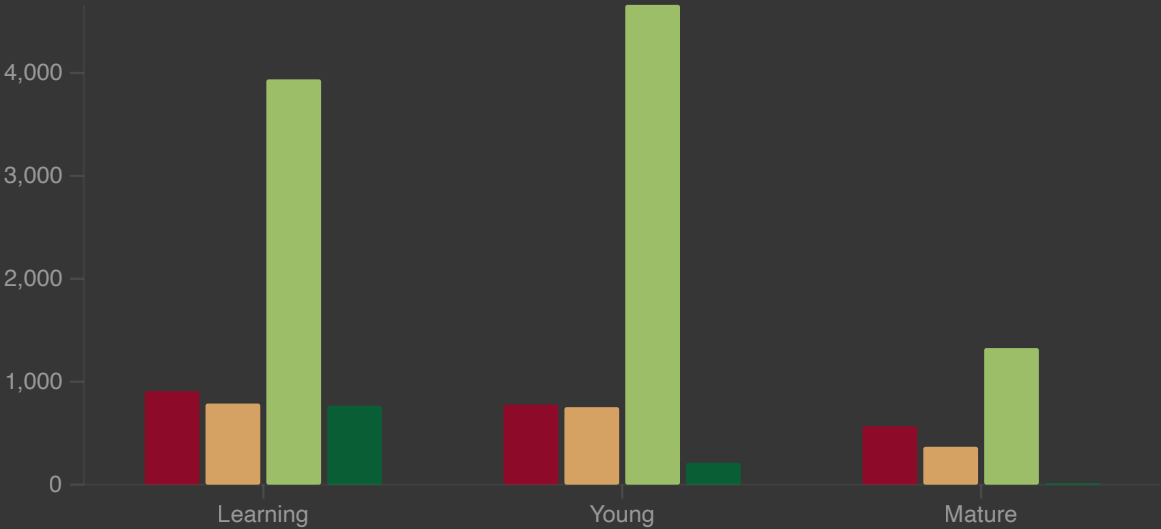
☐ 1 month ☐ 3 months ☒ 1 year



Answer Buttons

The number of times you have pressed each button.

☐ 1 month ☐ 3 months ☒ 1 year



Added

The number of new cards you have added.

☒ 1 month ☐ 3 months ☐ 1 year ☐ all

NO DATA