

ANEC – Statistics 2026

Brazilian Exports of Soybeans, Soybean Meal, Maize, DDGS, Sorghum and Wheat



Week 08/2026

Weekly shipments

PORT	Last Week (22nd to 28th Feb)						Current Week* (01st to 07th Mar)						(metric tons)
	Soybean	Soybean meal	Maize	Wheat	DDGS	Sorghum	Soybean	Soybean meal	Maize	Wheat	DDGS	Sorghum	
SANTOS	905.438	195.642					1.737.783	311.667					
PARANAGUÁ	481.820	58.913					738.397	126.584					
SÃO FRANCISCO DO	134.391						200.006		53.000				
VITÓRIA	67.387						134.000						
ITACOATIARA	195.060						280.094						
SÃO LUIS/ITAQUI	136.270						465.871						
RIO GRANDE		30.000	168.835	82.314			65.072	80.000	173.120	112.170			
SANTARÉM							365.101						
BARCARENA	260.424						613.053						
ARATU/COTEGIPE	136.603						69.200	61.000				32.000	
IMBITUBA											67.200		
ILHÉUS													
TMIB/SERGIPE													
ANTONINA													
SANTANA							47.000						
BELÉM													
RIO DE JANEIRO			11.150										
SALVADOR(ENSEADA)													
BARRA DOS COQUEIROS													
TOTAL	2.317.394	284.555	179.985	82.314	-	-	4.715.576	579.251	226.120	112.170	67.200	32.000	

*Based on shipment schedule

Week 08/2026

Source: Cargonave.

Monthly shipments 2025

	Soybean	Soybean Meal	Maize	Wheat	Total Products
January	1.124.713	1.643.745	3.185.203	660.691	6.614.352
February	9.726.597	1.502.071	1.317.090	559.704	13.105.462
March	15.732.109	2.187.165	474.165	205.829	18.599.268
April	13.496.355	2.153.256	48.263	51.797	15.749.670
May	14.183.463	2.120.409	68.400		16.372.271
June	13.790.102	1.667.803	568.668		16.026.572
July	11.943.120	2.143.950	3.970.781		18.057.851
August	8.107.299	2.021.153	7.335.372		17.463.824
September	6.973.667	1.962.405	6.983.167		15.919.238
October	6.398.881	1.725.641	5.692.094		13.816.615
November	4.232.717	2.256.635	5.910.880	336.133	12.736.365
December	2.970.985	1.696.066	6.036.245	510.816	11.214.112
Total of the Year	108.680.007	23.080.298	41.590.327	2.324.969	175.675.602

*Monthly total based on shipment schedule

Monthly shipments 2026

	Soybean	Soybean Meal	Maize	Wheat	DDGS	Sorghum	Total Products
January	2.444.711	1.708.681	3.250.783	279.699	80.141		7.764.014
February	8.878.831	1.354.694	1.067.582	308.990	144.595	-	11.754.692
March*	16.085.710	2.492.077	697.020	432.170	67.200	32.000	19.806.177
April							-
May							-
June							-
July							-
August							-
September							-
October							-
November							-
December							-
Total of the Year	27.409.252	5.555.452	5.015.385	1.020.858	291.936	32.000	39.324.883

*Monthly total based on shipment schedule

Week 08/2026

Source: Cargonave.

Brazil: comparison of exports 2025 x 2026

Soybeans				
Month	2025	2026*		
January	1.124.713	2.444.711		1.319.998
February	9.726.597	8.878.831	-	847.766
March*	15.732.109	16.085.710		353.601
April	13.496.355	-	-	13.496.355
May	14.183.463	-	-	14.183.463
June	13.790.102	-	-	13.790.102
July	11.943.120	-	-	11.943.120
August	8.107.299	-	-	8.107.299
September	6.973.667	-	-	6.973.667
October	6.398.881	-	-	6.398.881
November	4.232.717	-	-	4.232.717
December	2.970.985	-	-	2.970.985
Total of the Year	108.680.007	27.409.252		

* 2026: Estimate based on shipment schedule

Soybean Meal				
Month	2025	2026*		
January	1.643.745	1.708.681		64.936
February	1.502.071	1.354.694	-	147.377
March*	2.187.165	2.492.077		304.912
April	2.153.256	-	-	2.153.256
May	2.120.409	-	-	2.120.409
June	1.667.803	-	-	1.667.803
July	2.143.950	-	-	2.143.950
August	2.021.153	-	-	2.021.153
September	1.962.405	-	-	1.962.405
October	1.725.641	-	-	1.725.641
November	2.256.635	-	-	2.256.635
December	1.696.066	-	-	1.696.066
Total of the Year	23.080.298	5.555.452		

* 2026: Estimate based on shipment schedule

Maize				
Month	2025	2026*		
January	3.185.203	3.250.783		65.580
February	1.317.090	1.067.582	-	249.508
March*	474.165	697.020		222.855
April	48.263	-	-	48.263
May	68.400	-	-	68.400
June	568.668	-	-	568.668
July	3.970.781	-	-	3.970.781
August	7.335.372	-	-	7.335.372
September	6.983.167	-	-	6.983.167
October	5.692.094	-	-	5.692.094
November	5.910.880	-	-	5.910.880
December	6.036.245	-	-	6.036.245
Total of the Year	41.590.327	5.015.385		

* 2026: Estimate based on shipment schedule

Wheat				
Month	2025	2026*		
January	660.691	279.699	-	380.993
February	559.704	308.990	-	250.714
March*	205.829	432.170		226.341
April	51.797	-	-	51.797
May	-	-	-	-
June	-	-	-	-
July	-	-	-	-
August	-	-	-	-
September	-	-	-	-
October	-	-	-	-
November	336.133	-	-	336.133
December	510.816	-	-	510.816
Total of the Year	2.324.969	1.020.858		

* 2026: Estimate based on shipment schedule

Week 08/2026

Source: Cargnave.

ANEC – Statistics 2026

Brazilian Exports of Soybeans, Soybean Meal, Maize, DDGS, Sorghum and Wheat

DDGS			
	2025	2026*	
January	134.671	80.057	
February	70.860	144.595	
March*	47.752	67.200	
April	78.179		
May	19.000		
June	57.180		
July	50.710		
August	19.133		
September	117.956		
October	29.168		
November	91.833		
December	79.407		
Total of the Year	795.849	291.852	

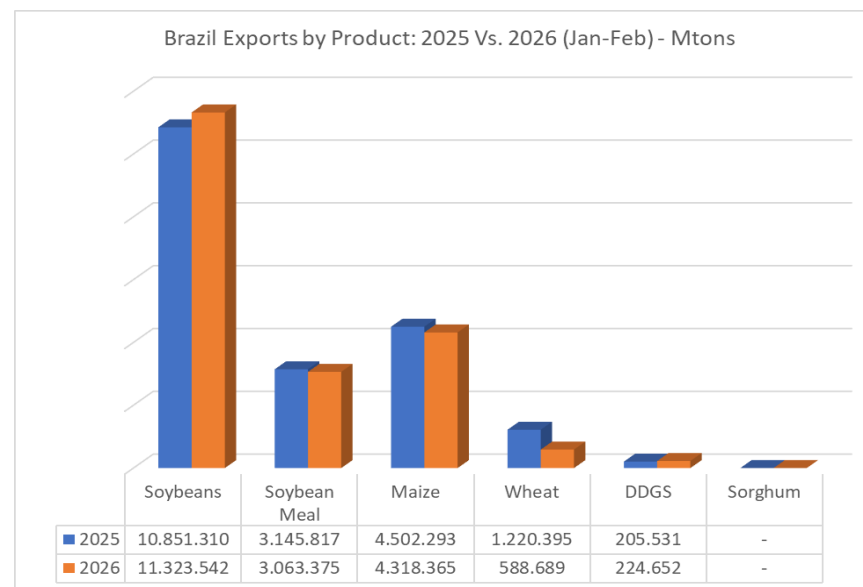
* 2026: Estimate based on shipment schedule

Sorghum			
	2025	2026*	
January			
February			
March*		32.000	
April			
May			
June			
July			
August			
September			
October			
November			
December			
Total of the Year	-	32.000	

* 2026: Estimate based on shipment schedule

Total Products			
	2025	2026*	
January	6.749.023	7.763.931	1.014.907
February	13.176.322	11.754.692	-
March*	18.647.020	19.806.177	-
April	15.827.849	-	-
May	16.391.271	-	-
June	16.083.752	-	-
July	18.108.561	-	-
August	17.482.958	-	-
September	16.037.194	-	-
October	13.845.783	-	-
November	12.828.198	-	-
December	11.293.519	-	-
Total of the Year	176.471.451	39.324.799	

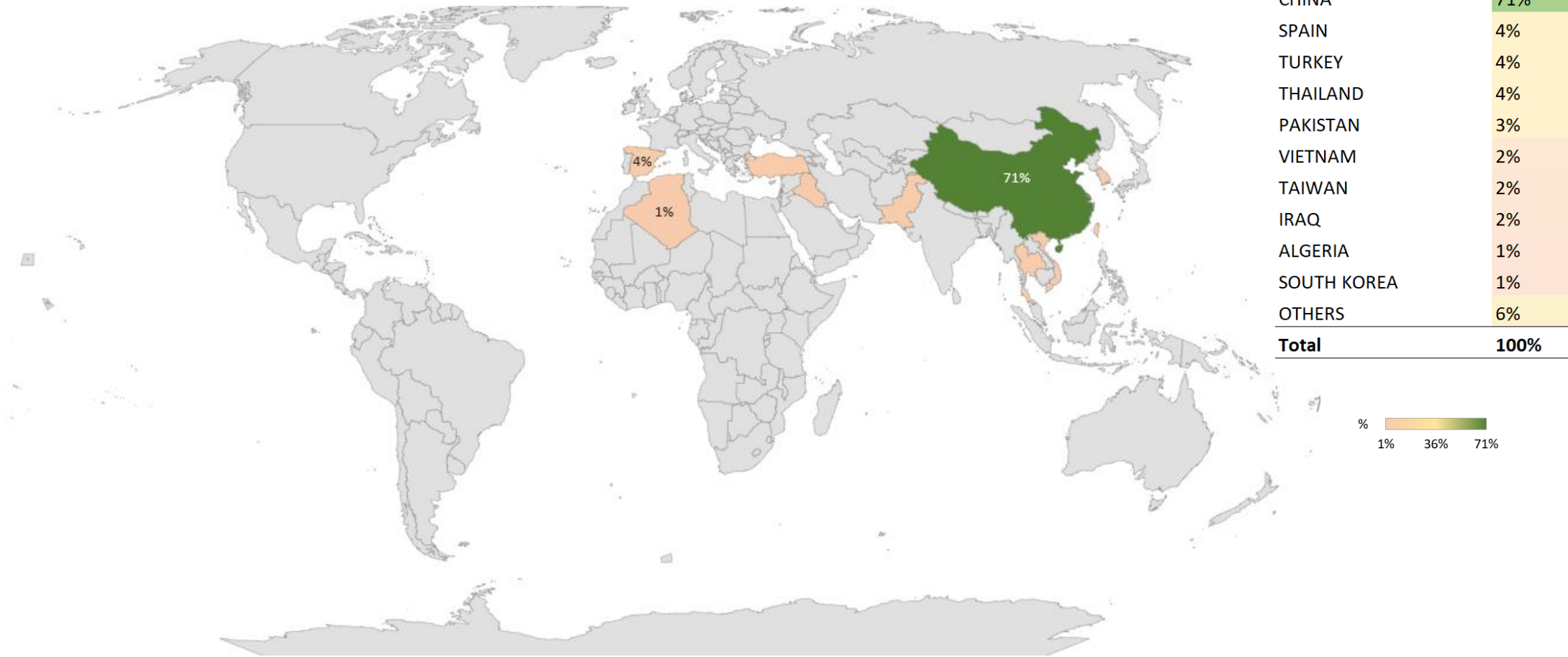
* 2026: Estimate based on shipment schedule



Week 08/2026

Source: Cargonave.

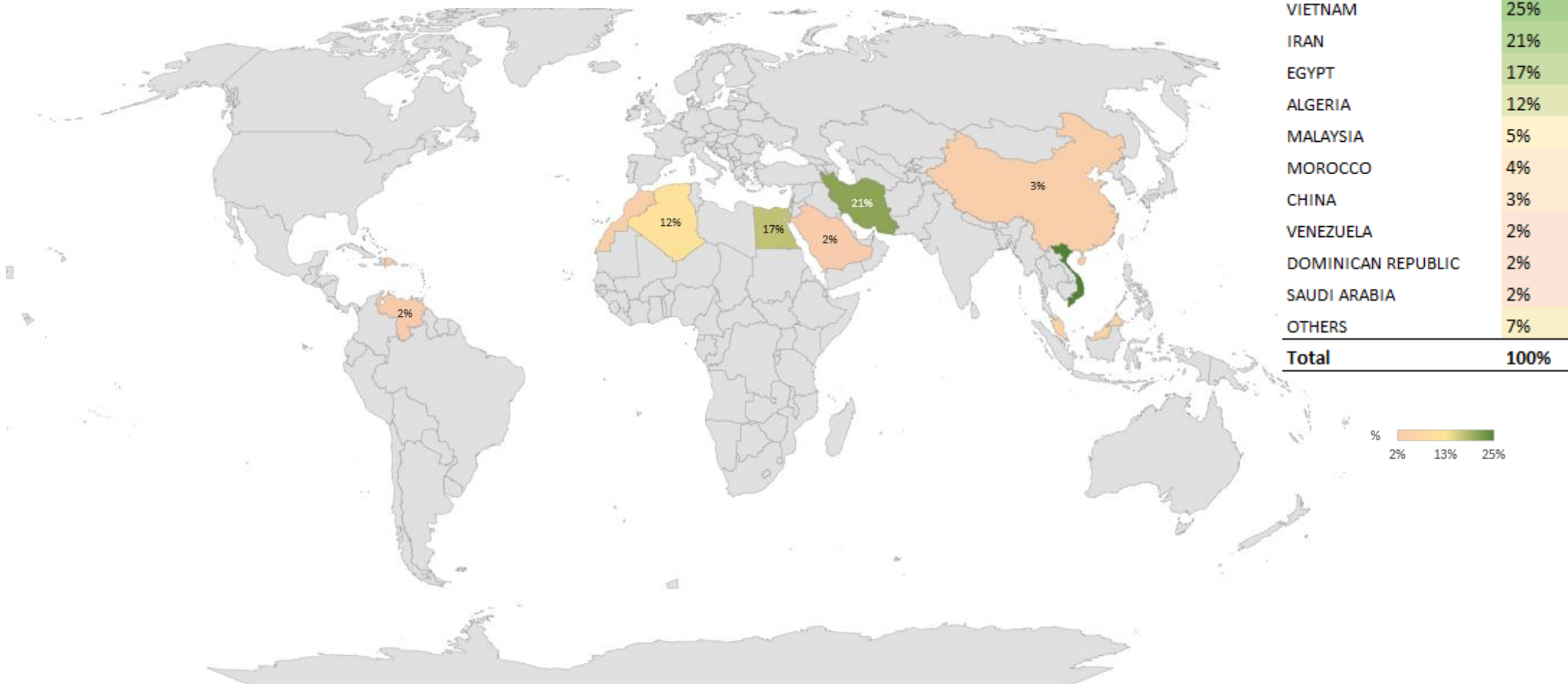
Brazilian Soybeans Importers: 2026 (jan-feb)



Week 08/2026

Source: Cargonave.

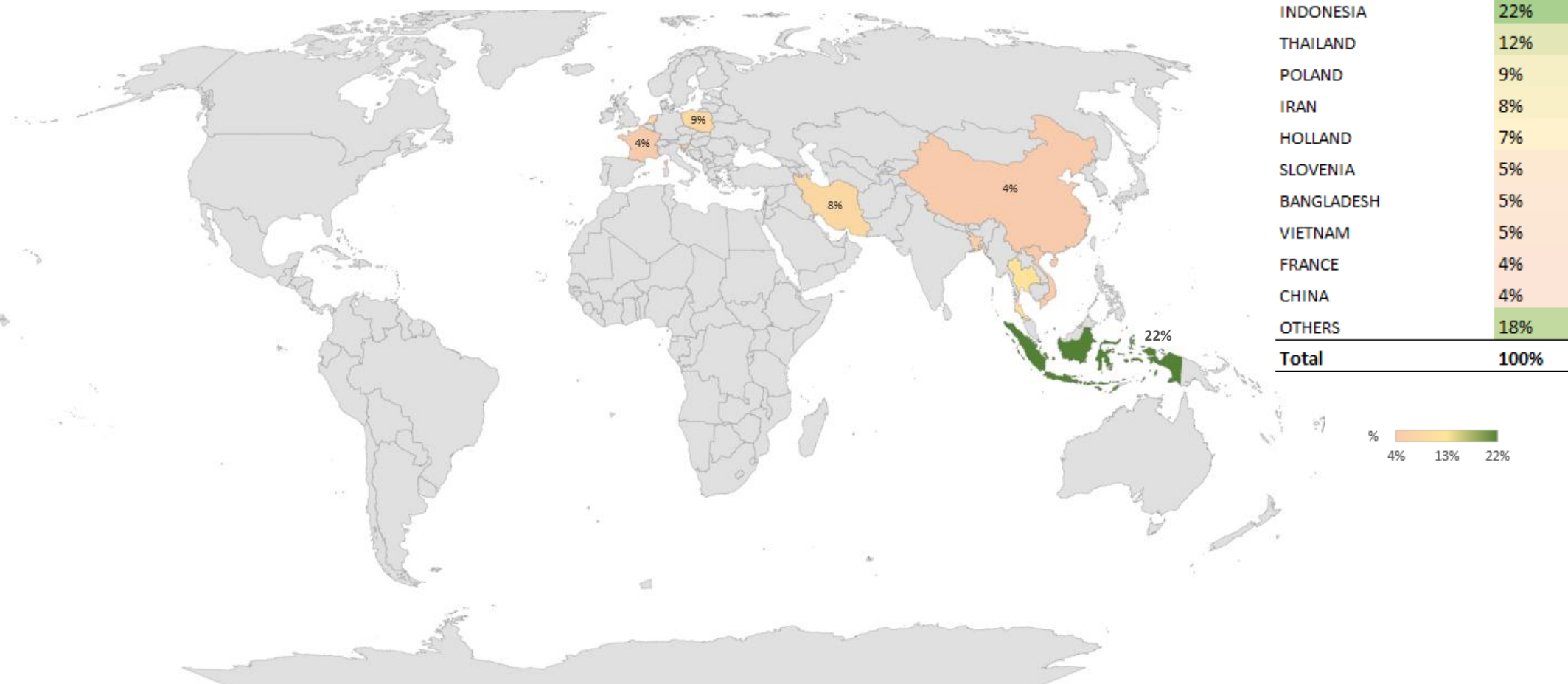
Brazilian Maize Importers: 2026 (jan-feb)



Week 08/2026

Source: Cargonave.

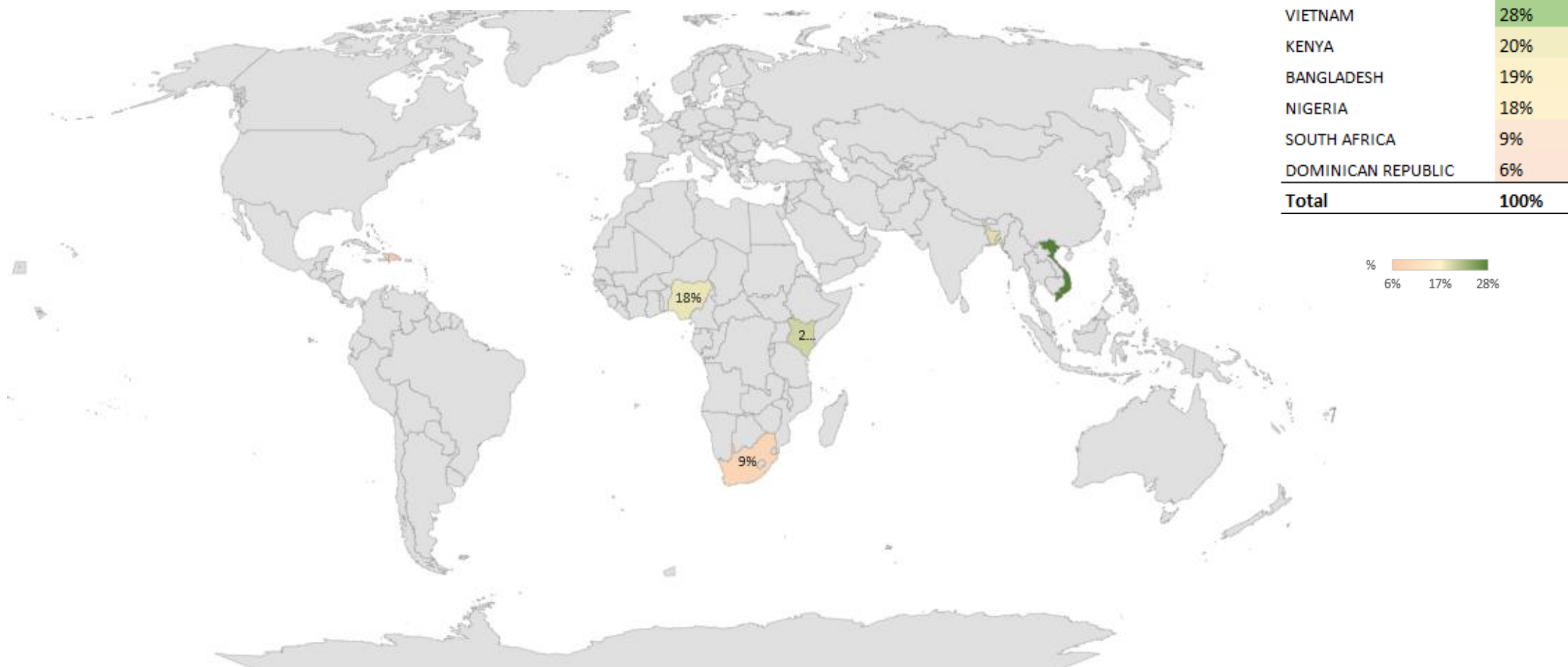
Brazilian Soybean Meal Importers: 2026 (jan-feb)



Week 08/2026

Source: Cargonave.

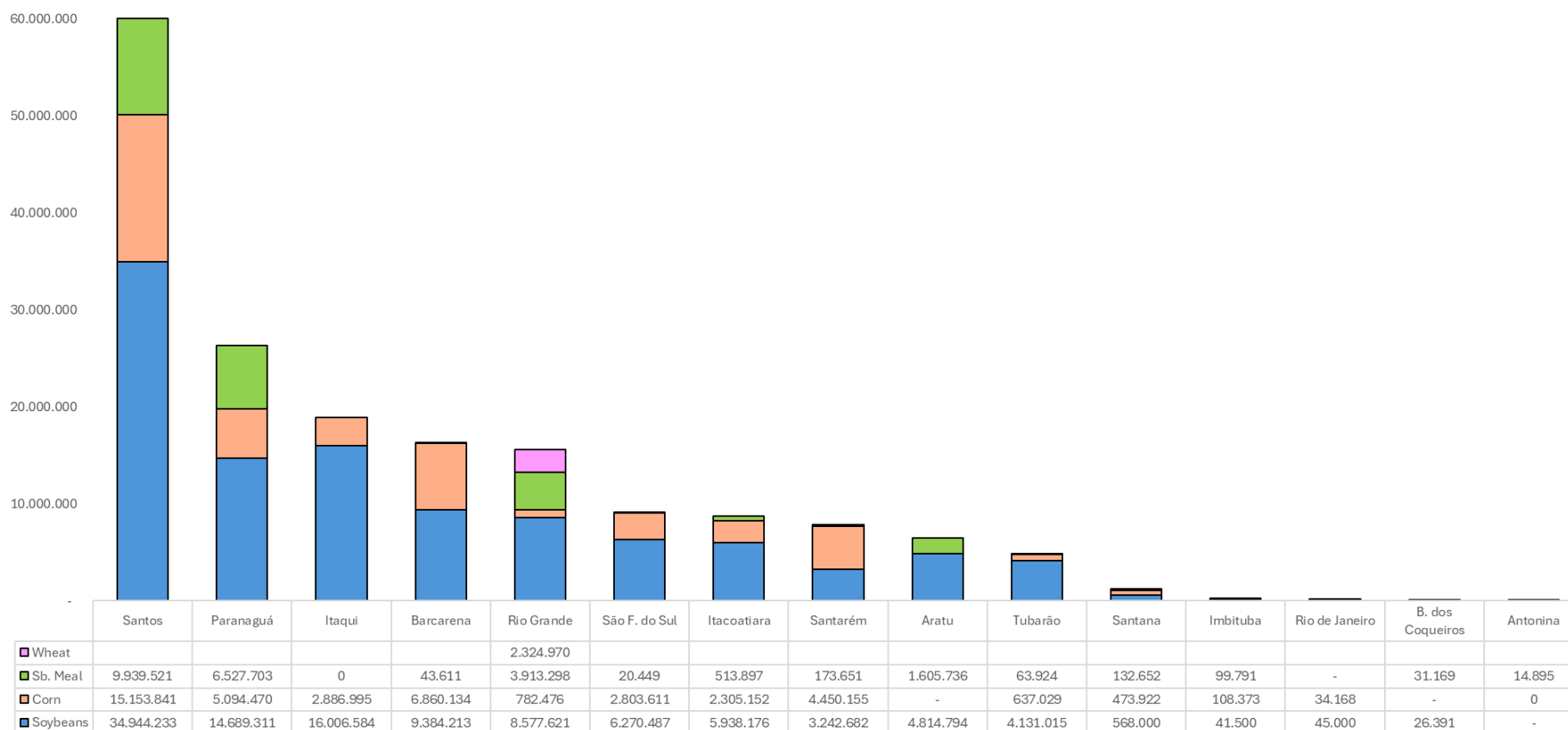
Brazilian Wheat Importers: 2026 (jan-feb)



Week 08/2026

Source: Cargonave.

Exports by loading port: 2025



Week 08/2026

Source: Cargonave.

Historical Overview of Exports

Soybeans	Jan	Feb	Mar	Apr	May	Jun	Jul	Aug	Sep	Oct	Nov	Dec	Total
2017	1.488.406	6.071.377	9.715.091	10.544.288	9.440.175	8.477.688	6.519.508	5.823.388	3.144.902	2.779.688	2.072.863	2.334.927	68.412.301
2018	1.655.977	5.614.644	10.746.197	11.756.725	11.039.298	9.712.800	8.340.416	7.119.033	5.690.410	4.405.831	4.986.737	2.719.635	83.787.704
2019	2.232.756	6.467.862	9.744.893	9.292.341	8.884.249	8.763.685	6.000.622	5.057.549	4.287.873	5.057.382	4.038.615	2.548.588	72.376.415
2020	1.668.994	6.629.339	13.307.982	14.279.986	13.866.297	11.923.341	8.028.887	5.574.160	3.915.611	2.172.171	770.328	161.024	82.298.121
2021	53.644	5.510.223	14.915.651	15.674.433	14.221.295	10.129.020	7.969.778	5.792.323	4.702.957	2.985.412	2.149.252	2.530.298	86.634.285
2022	2.282.275	9.113.470	12.163.029	11.362.634	10.268.250	9.946.704	7.009.173	5.050.276	3.585.441	3.589.751	1.918.350	1.515.151	77.804.504
2023	944.384	7.547.430	14.440.022	14.046.673	14.433.706	13.835.761	8.606.444	7.566.517	5.546.636	5.952.232	4.599.499	3.792.303	101.311.607
2024	2.404.647	9.608.047	13.548.567	13.452.019	13.472.085	13.829.713	9.597.282	7.978.105	5.161.729	4.435.129	2.339.196	1.468.271	97.294.790
2025	1.124.713	9.726.597	15.732.109	13.496.355	14.183.463	13.790.102	11.943.120	8.107.299	6.973.667	6.398.881	4.232.717	2.970.985	108.680.007

Maize	Jan	Feb	Mar	Apr	May	Jun	Jul	Aug	Sep	Oct	Nov	Dec	Total
2017	1.041.207	313.159	142.072	146.046	261.815	976.819	3.311.277	5.522.883	5.541.485	4.654.282	4.190.567	3.503.064	29.604.677
2018	2.464.331	727.280	278.970	50.950		94.797	1.818.457	3.672.171	3.775.606	2.750.536	4.213.655	4.343.302	24.190.055
2019	2.948.769	996.269	503.992	395.915	539.224	2.548.391	6.915.252	7.668.849	5.788.340	5.510.222	4.529.035	2.922.425	41.266.682
2020	1.173.659	415.282	150.963		29.705	787.800	5.101.629	6.680.812	5.763.358	4.534.363	4.936.439	3.822.935	33.396.945
2021	2.163.079	508.407	115.120	21.991		89.213	3.041.308	4.193.451	2.546.672	1.873.523	2.740.627	3.221.639	20.515.030
2022	2.223.556	523.342	107.232	942.063	1.090.094	1.503.453	5.629.406	6.897.373	6.847.551	6.173.577	5.467.973	7.290.756	44.696.374
2023	4.864.268	1.939.801	780.053	166.552	493.526	1.230.978	5.938.066	9.245.821	9.425.038	8.021.048	6.995.920	6.457.613	55.558.685
2024	3.507.558	724.065	140.561	76.655	493.918	982.812	4.707.491	6.423.328	6.564.177	5.672.346	4.920.723	3.618.134	37.831.767
2025	3.185.203	1.317.090	474.165	48.263	68.400	568.668	3.970.781	7.335.372	6.983.167	5.692.094	5.910.880	6.036.245	41.590.327

Week 08/2026

Source: Cargonave.

ANEC – Statistics 2026

Brazilian Exports of Soybeans, Soybean Meal, Maize, DDGS, Sorghum and Wheat

Sb. Meal	Jan	Feb	Mar	Apr	May	Jun	Jul	Aug	Sep	Oct	Nov	Dec	Total
2017	931.474	887.998	964.728	1.548.497	1.374.736	1.263.667	1.227.005	1.157.873	1.109.373	1.238.618	1.165.687	1.107.124	13.976.782
2018	1.191.745	1.121.943	1.297.935	1.526.530	1.554.704	1.302.776	1.657.824	1.391.483	1.575.267	877.781	1.378.087	1.295.128	16.171.202
2019	877.759	1.070.442	1.333.120	1.472.683	1.488.083	1.636.696	1.448.444	1.180.619	1.195.768	1.596.474	1.103.098	1.363.926	15.767.111
2020	847.414	1.020.980	1.531.686	1.836.011	1.768.270	1.391.515	1.727.690	1.614.673	1.318.059	1.331.053	1.317.959	1.111.702	16.817.012
2021	986.857	890.368	1.269.402	1.576.158	1.700.837	1.840.295	1.748.287	1.279.428	1.463.151	1.337.147	1.247.006	1.542.034	16.880.969
2022	1.581.572	1.572.872	1.369.890	1.825.992	1.888.531	2.160.334	2.068.292	1.692.843	1.754.059	1.784.362	1.349.711	1.350.841	20.399.299
2023	1.432.032	1.276.948	1.805.622	1.742.051	2.276.740	2.203.920	2.166.502	1.967.084	1.906.993	1.651.830	1.926.878	1.998.067	22.354.667
2024	1.757.171	1.454.991	1.800.503	2.097.460	1.965.850	2.047.523	2.011.445	2.100.960	1.620.104	2.455.745	1.728.351	1.850.996	22.891.099
2025	1.643.745	1.502.071	2.187.165	2.153.256	2.120.409	1.667.803	2.143.950	2.021.153	1.962.405	1.725.641	2.256.635	1.696.066	23.080.298

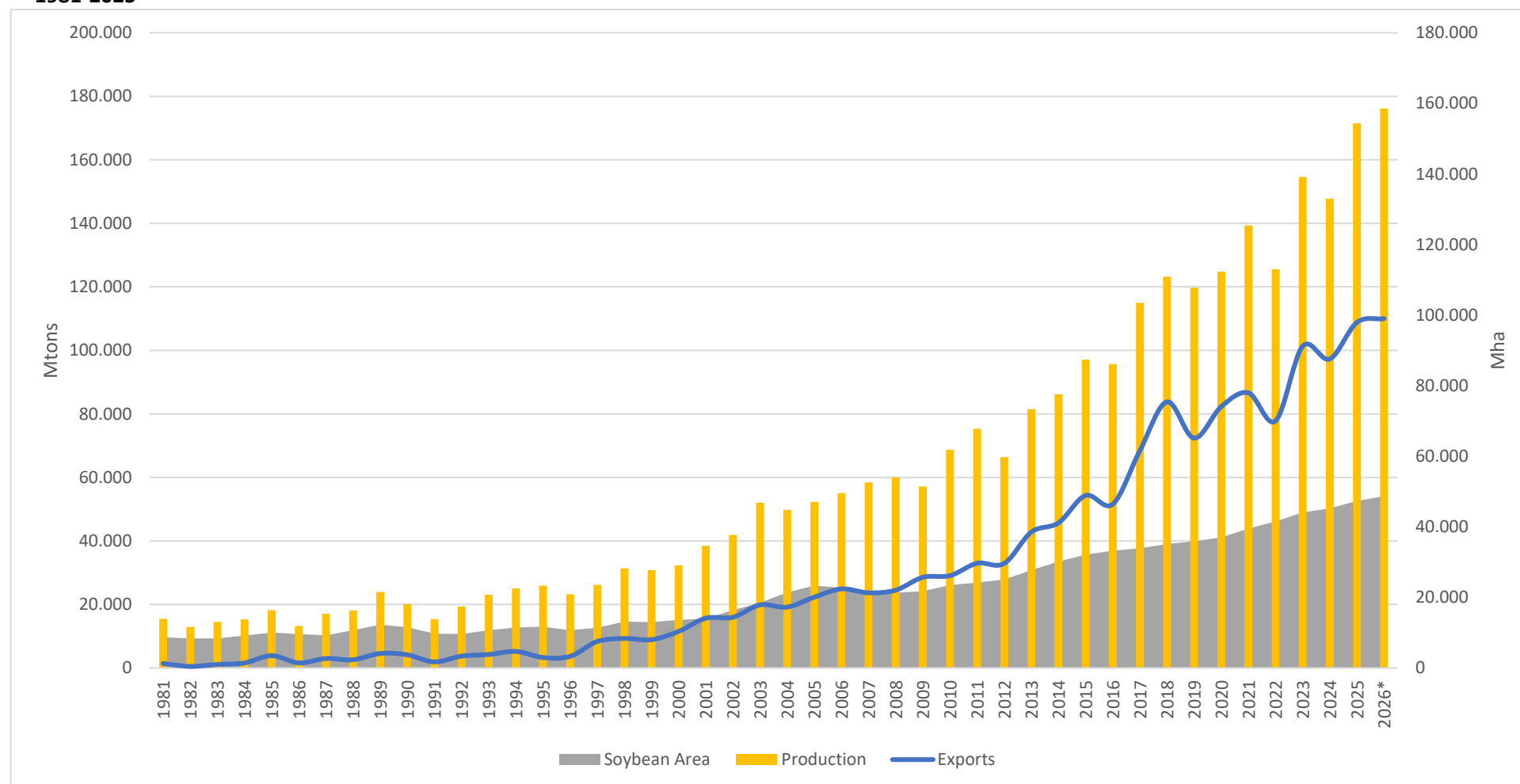
Wheat	Jan	Feb	Mar	Apr	May	Jun	Jul	Aug	Sep	Oct	Nov	Dec	Total
2017	210.384	322.809	86.145	98.326	50.732	25.000	-	30.000	26.250	-	20.300	85.831	955.778
2018	24.200	98.618	-	-	-	-	-	-	-	-	32.602	229.533	384.953
2019	244.136	84.290	65.015	-	-	-	-	-	-	16.000	-	59.949	469.390
2020	95.020	104.479	61.561	21.200	-	-	-	-	-	-	14.009	367.329	663.599
2021	407.701	82.957	-	-	-	-	-	-	-	19.988	59.100	538.640	1.108.386
2022	695.953	925.264	508.164	156.427	109.099	-	-	-	-	-	116.813	689.256	3.200.976
2023	765.089	573.988	603.098	212.556	121.385	58.000	70.380	52.000	-	66.462	200.705	488.876	3.212.539
2024	715.671	594.906	855.796	129.603	23.973	-	5.088	-	-	17.034	95.931	305.440	2.743.442
2025	660.691	559.704	205.829	51.797	-	-	-	-	-	-	336.133	510.816	2.324.969

Week 08/2026

Source: Cargonave.

Soybeans: Planted Area (Mha), Production and Exports (Mtons)

1981-2025

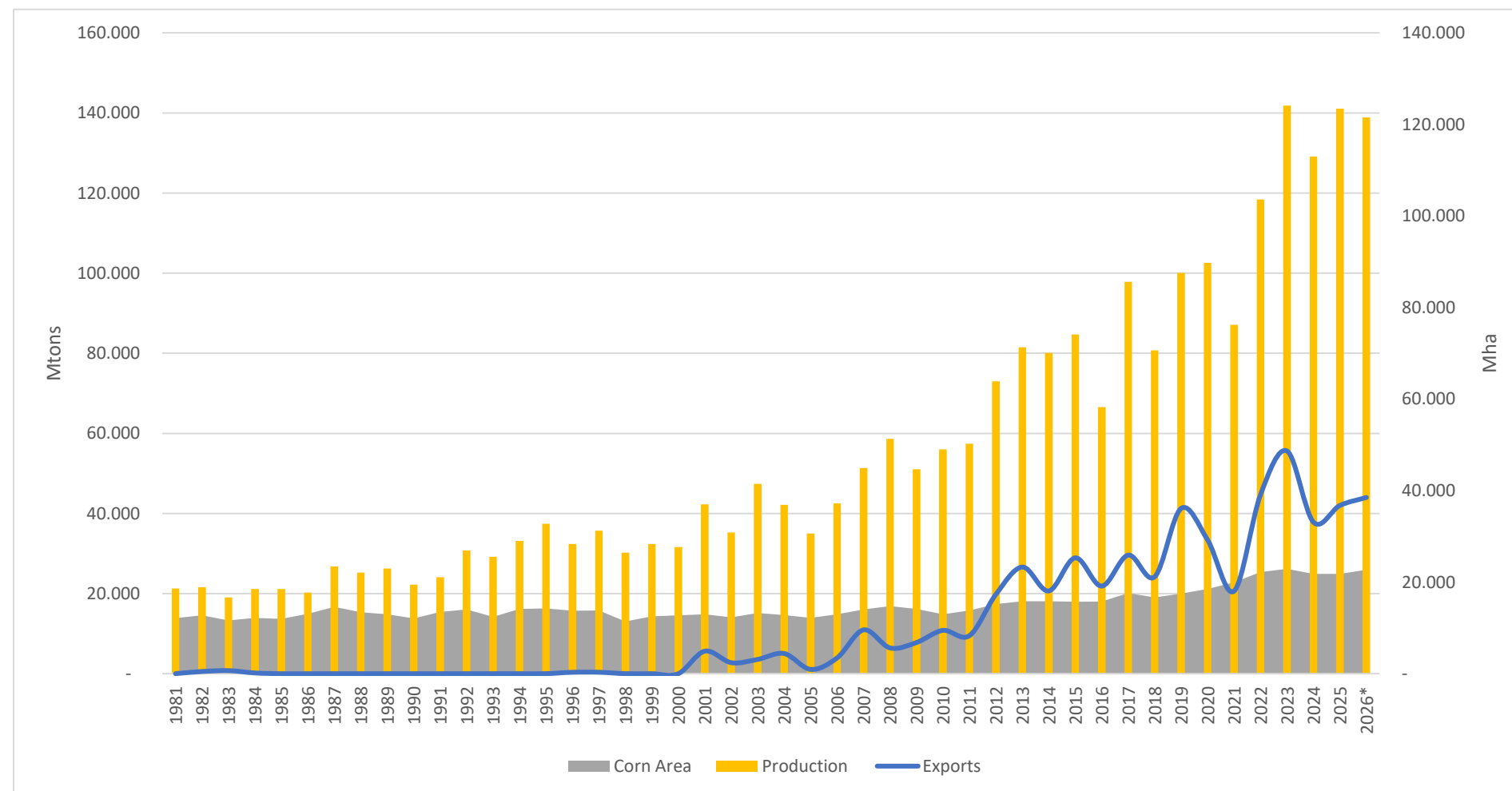


Week 08/2026

Source: Cargonave.

Maize: Planted Area (Mha), Production and Exports (Mtons)

1981-2025



Week 08/2026

Source: Cargonave.