

## ANEC – Statistics 2026

Brazilian Exports of Soybeans, Soybean Meal, Maize, DDGS, Sorghum and Wheat



**Week 13/2026**

## Weekly shipments

PORT	Last Week (29th to 04th April )						Current Week* (05th to 11th April )						(metric tons)
	Soybean	Soybean meal	Maize	Wheat	DDGS	Sorghum	Soybean	Soybean meal	Maize	Wheat	DDGS	Sorghum	
SANTOS	1.382.064	361.109					1.615.231	327.213					
PARANAGUÁ	609.611	137.078					629.281	124.000					
SÃO FRANCISCO DO	264.295						198.866						
VITÓRIA	137.865						66.000						
ITACOATIARA	251.136						216.142						
SÃO LUIS/ITAQUI	419.072						543.982						
RIO GRANDE	21.840	132.045	42.571				258.812	144.078	44.500				
SANTARÉM	184.208				44.950		124.100	12.000					
BARCARENA	639.057						467.199						
ARATU/COTEGIPE	71.487	71.499					123.065	66.000					
IMBITUBA													
ILHÉUS													
TMIB/SERGIPE													
ANTONINA													
SANTANA													
BELÉM									35.000				
RIO DE JANEIRO													
SALVADOR(ENSEADA)													
BARRA DOS COQUEIROS													
TOTAL	3.980.635	701.731	42.571	-	44.950	-	4.242.678	673.291	79.500	-	-	-	-

\*Based on shipment schedule

Week 13/2026

Source: Cargonave.

### Monthly shipments 2025

	Soybean	Soybean Meal	Maize	Wheat	Total Products
January	1.124.713	1.643.745	3.185.203	660.691	6.614.352
February	9.726.597	1.502.071	1.317.090	559.704	13.105.462
March	15.732.109	2.187.165	474.165	205.829	18.599.268
April	13.496.355	2.153.256	48.263	51.797	15.749.670
May	14.183.463	2.120.409	68.400		16.372.271
June	13.790.102	1.667.803	568.668		16.026.572
July	11.943.120	2.143.950	3.970.781		18.057.851
August	8.107.299	2.021.153	7.335.372		17.463.824
September	6.973.667	1.962.405	6.983.167		15.919.238
October	6.398.881	1.725.641	5.692.094		13.816.615
November	4.232.717	2.256.635	5.910.880	336.133	12.736.365
December	2.970.985	1.696.066	6.036.245	510.816	11.214.112
<b>Total of the Year</b>	<b>108.680.007</b>	<b>23.080.298</b>	<b>41.590.327</b>	<b>2.324.969</b>	<b>175.675.602</b>

\*Monthly total based on shipment schedule

### Monthly shipments 2026

	Soybean	Soybean Meal	Maize	Wheat	DDGS	Sorghum	Total Products
January	2.375.993	1.734.651	3.257.220	279.699	80.141		7.727.704
February	8.869.551	1.353.165	1.067.711	309.020	144.595	-	11.744.042
March	15.836.933	2.239.406	886.410	381.607	67.200	35.179	19.446.733
<b>April*</b>	<b>14.900.000 - 16.656.877</b>	<b>2.707.014</b>	<b>191.978</b>		<b>151.788</b>	<b>-</b>	<b>17.950.780 - 19.707.657</b>
May							-
June							-
July							-
August							-
September							-
October							-
November							-
December							-
<b>Total of the Year</b>	<b>41.982.477 - 43.739.354</b>	<b>8.034.236</b>	<b>5.403.319</b>	<b>970.325</b>	<b>443.724</b>	<b>35.179</b>	<b>56.869.260 - 58.626.137</b>

\*Monthly total based on shipment schedule

**Week 13/2026**

Source: Cargonave.

## ANEC – Statistics 2026

### Brazilian Exports of Soybeans, Soybean Meal, Maize, DDGS, Sorghum and Wheat

#### Brazil: comparison of exports 2025 x 2026

Soybeans			
Month	2025	2026*	
January	1.124.713	2.375.993	1.251.280
February	9.726.597	8.869.551	857.046
March	15.732.109	15.836.933	104.823
April*	13.496.355	15.778.439	2.282.084
May	14.183.463	-	14.183.463
June	13.790.102	-	13.790.102
July	11.943.120	-	11.943.120
August	8.107.299	-	8.107.299
September	6.973.667	-	6.973.667
October	6.398.881	-	6.398.881
November	4.232.717	-	4.232.717
December	2.970.985	-	2.970.985
<b>Total of the Year</b>	<b>108.680.007</b>	<b>42.860.916</b>	

\* 2026: Estimate based on shipment schedule

Maize			
Month	2025	2026*	
January	3.185.203	3.257.220	72.017
February	1.317.090	1.067.711	249.379
March	474.165	886.410	412.245
April*	48.263	191.978	143.715
May	68.400	-	68.400
June	568.668	-	568.668
July	3.970.781	-	3.970.781
August	7.335.372	-	7.335.372
September	6.983.167	-	6.983.167
October	5.692.094	-	5.692.094
November	5.910.880	-	5.910.880
December	6.036.245	-	6.036.245
<b>Total of the Year</b>	<b>41.590.327</b>	<b>5.403.319</b>	

\* 2026: Estimate based on shipment schedule

Soybean Meal			
Month	2025	2026*	
January	1.643.745	1.734.651	90.906
February	1.502.071	1.353.165	148.906
March	2.187.165	2.239.406	52.240
April*	2.153.256	2.707.014	553.758
May	2.120.409	-	2.120.409
June	1.667.803	-	1.667.803
July	2.143.950	-	2.143.950
August	2.021.153	-	2.021.153
September	1.962.405	-	1.962.405
October	1.725.641	-	1.725.641
November	2.256.635	-	2.256.635
December	1.696.066	-	1.696.066
<b>Total of the Year</b>	<b>23.080.298</b>	<b>8.034.236</b>	

\* 2026: Estimate based on shipment schedule

Wheat			
Month	2025	2026*	
January	660.691	279.499	381.193
February	559.704	309.020	250.684
March	205.829	381.607	175.778
April*	51.797	-	51.797
May	-	-	-
June	-	-	-
July	-	-	-
August	-	-	-
September	-	-	-
October	-	-	-
November	336.133	-	336.133
December	510.816	-	510.816
<b>Total of the Year</b>	<b>2.324.969</b>	<b>970.125</b>	

\* 2026: Estimate based on shipment schedule

Week 13/2026

Source: Cargovave.

## ANEC – Statistics 2026

### Brazilian Exports of Soybeans, Soybean Meal, Maize, DDGS, Sorghum and Wheat

DDGS			
	2025	2026*	
January	134.671	80.057	
February	70.860	144.595	
March	47.752	67.200	
<b>April*</b>	78.179	151.788	
May	19.000		
June	57.180		
July	50.710		
August	19.133		
September	117.956		
October	29.168		
November	91.833		
December	79.407		
<b>Total of the Year</b>	<b>795.849</b>	<b>443.640</b>	

\* 2026: Estimate based on shipment schedule

Sorghum			
	2025	2026*	
January			
February			
March		35.179	
<b>April*</b>			
May			
June			
July			
August			
September			
October			
November			
December			
<b>Total of the Year</b>	<b>-</b>	<b>35.179</b>	

\* 2026: Estimate based on shipment schedule

Total Products			
	2025	2026*	
January	6.749.023	7.727.420	978.397
February	13.176.322	11.744.042	1.432.280
March	18.647.020	19.446.733	799.713
<b>April*</b>	15.827.849	18.829.219	3.001.370
May	16.391.271	-	16.391.271
June	16.083.752	-	16.083.752
July	18.108.561	-	18.108.561
August	17.482.958	-	17.482.958
September	16.037.194	-	16.037.194
October	13.845.783	-	13.845.783
November	12.828.198	-	12.828.198
December	11.293.519	-	11.293.519
<b>Total of the Year</b>	<b>176.471.451</b>	<b>57.747.415</b>	

\* 2026: Estimate based on shipment schedule

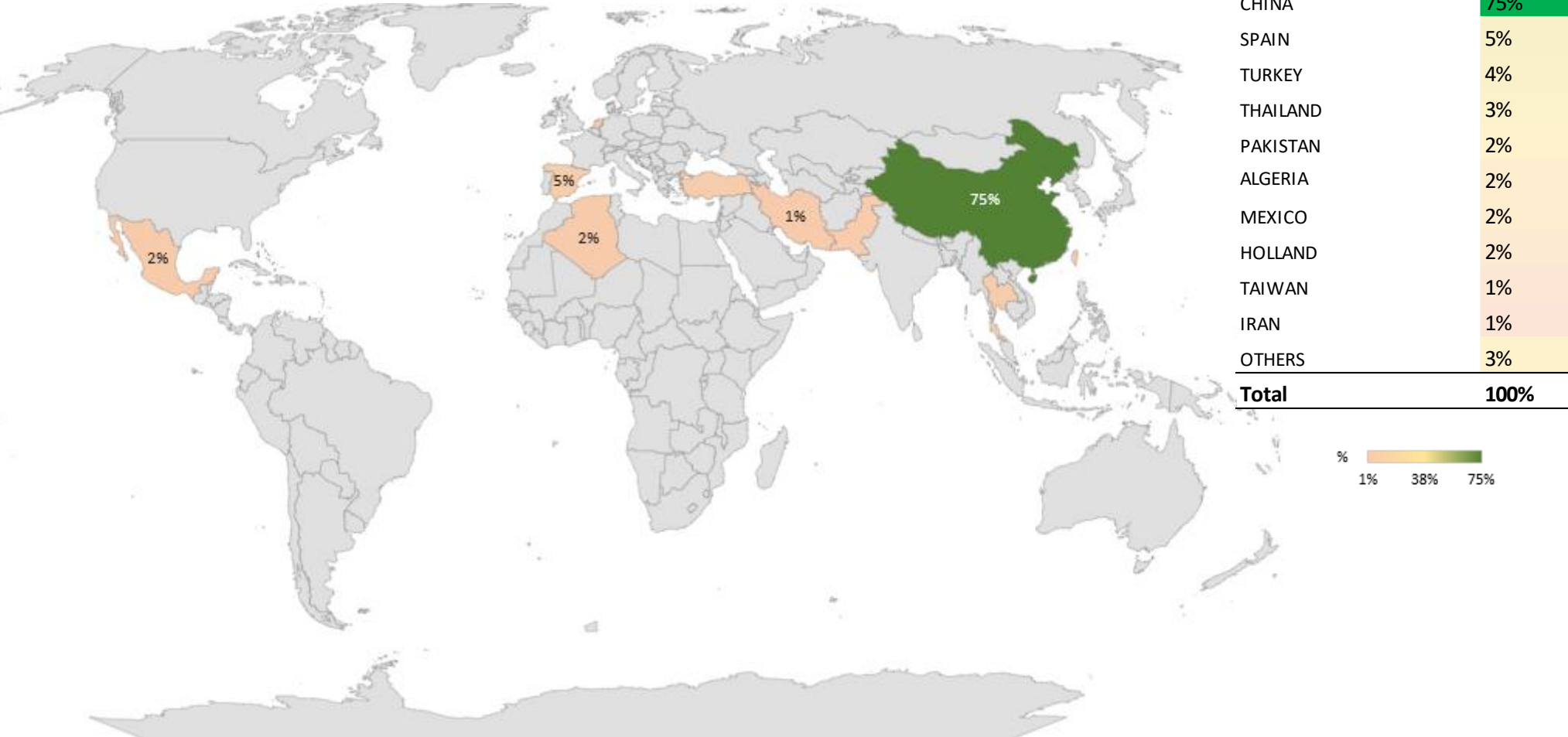


Week 13/2026

Source: Cargonave.



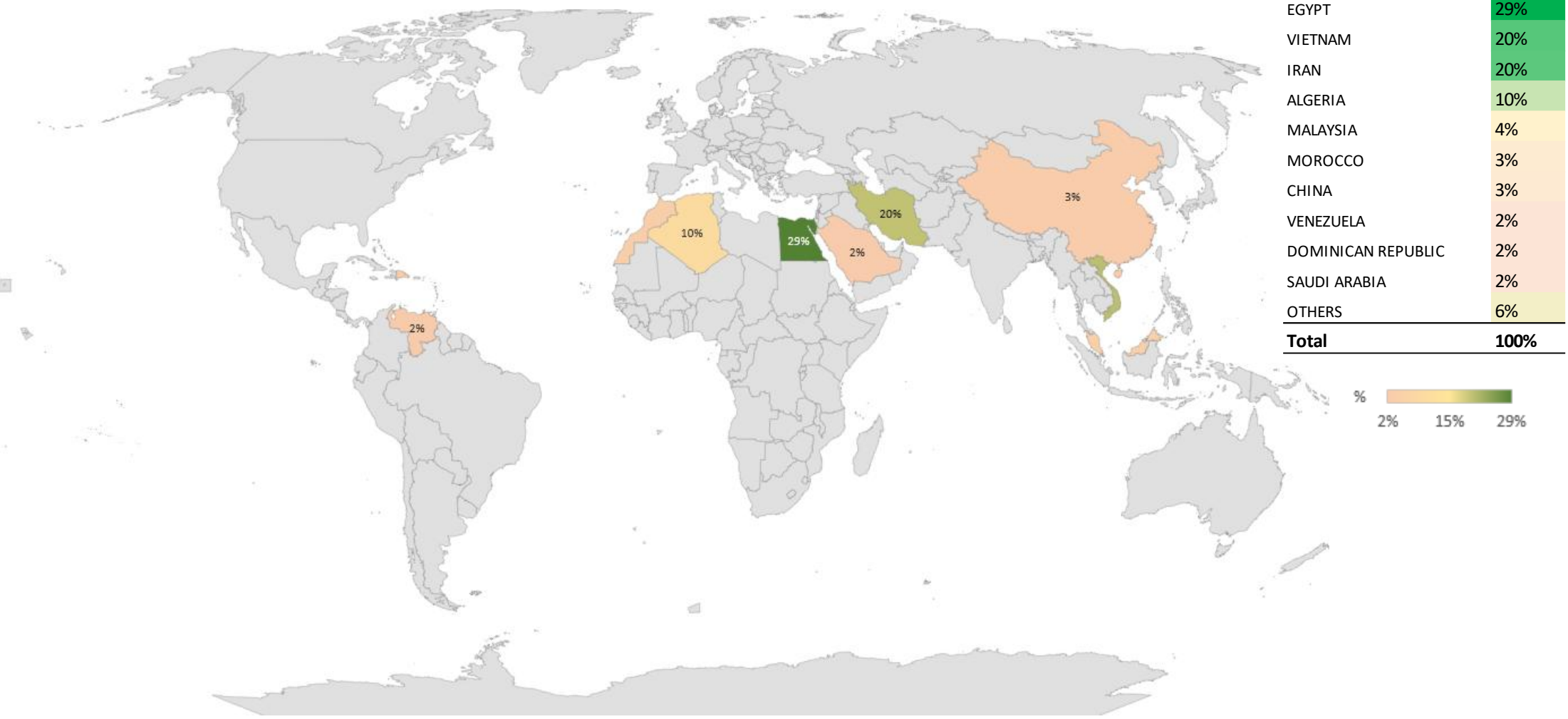
Brazilian Soybeans Importers: 2026 (jan-mar)



Week 13/2026

Source: Cargonave.

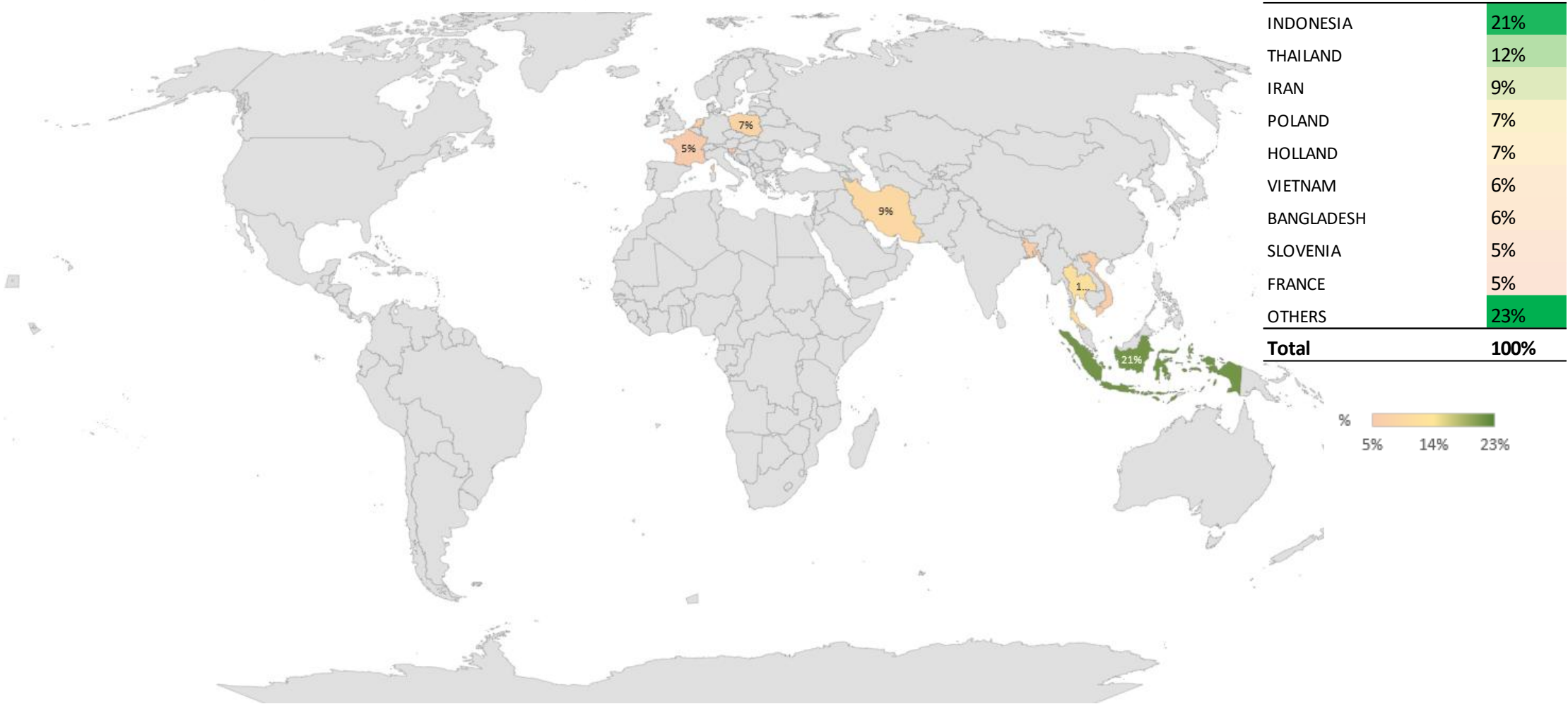
Brazilian Maize Importers: 2026 (jan-mar)



Week 13/2026

Source: Cargonave.

Brazilian Soybean Meal Importers: 2026 (jan-mar)

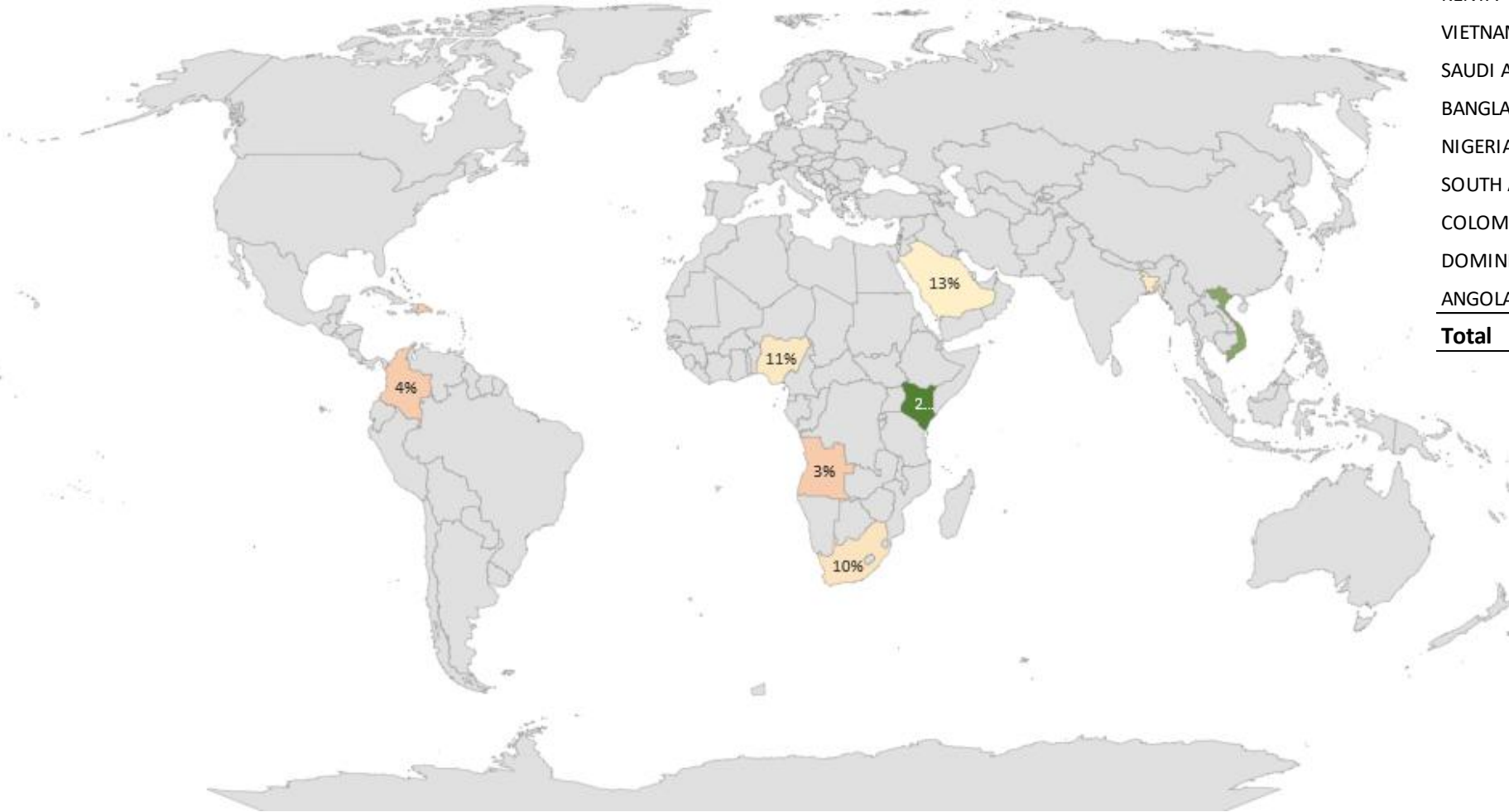


Week 13/2026

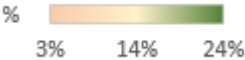
Source: Cargonave.



Brazilian Wheat Importers: 2026 (jan-mar)



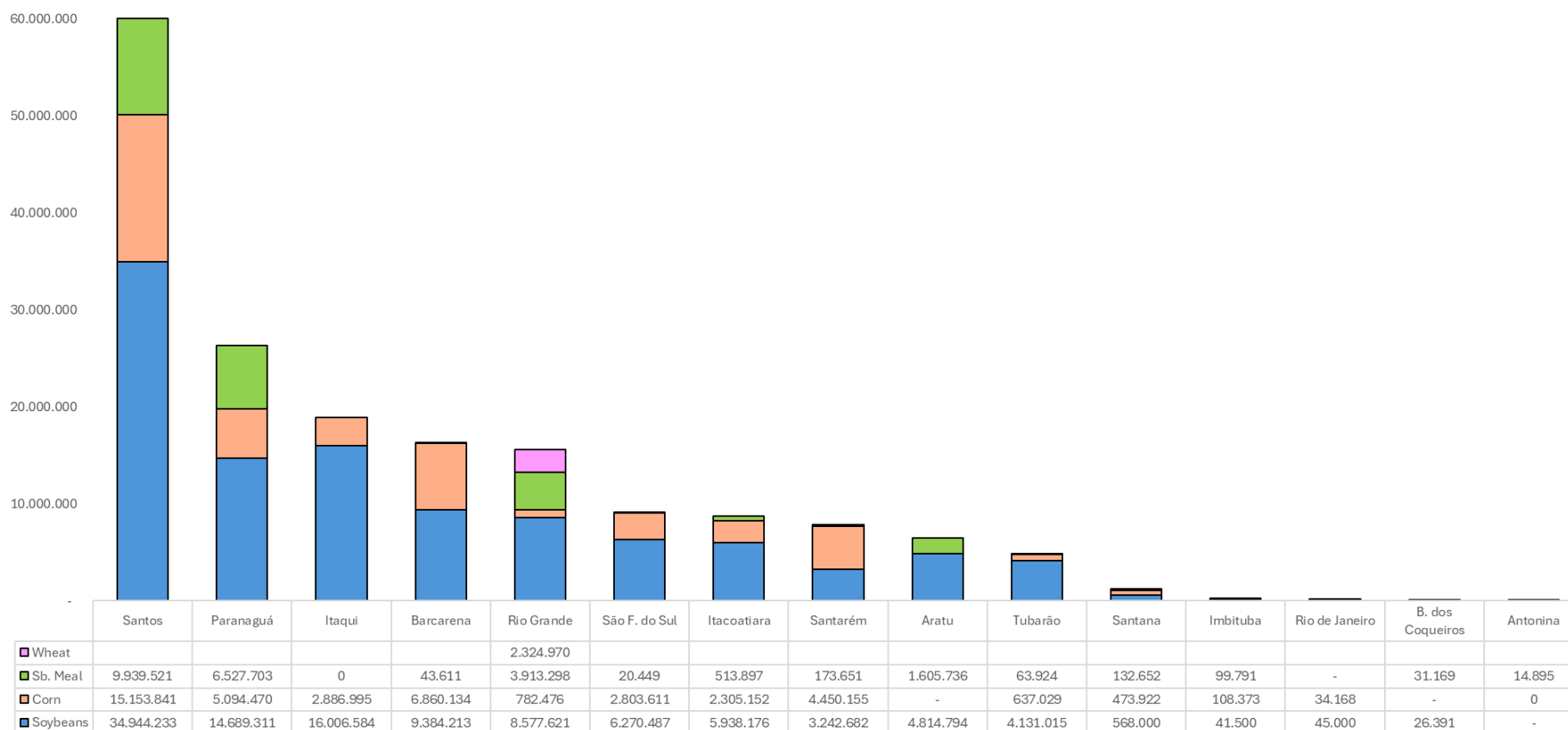
Destination	%
KENYA	24%
VIETNAM	20%
SAUDI ARABIA	13%
BANGLADESH	11%
NIGERIA	11%
SOUTH AFRICA	10%
COLOMBIA	4%
DOMINICAN REPUBLIC	3%
ANGOLA	3%
<b>Total</b>	<b>100%</b>



Week 13/2026

Source: Cargonave.

## Exports by loading port: 2025



Week 13/2026

Source: Cargonave.

### Historical Overview of Exports

<b>Soybeans</b>	<b>Jan</b>	<b>Feb</b>	<b>Mar</b>	<b>Apr</b>	<b>May</b>	<b>Jun</b>	<b>Jul</b>	<b>Aug</b>	<b>Sep</b>	<b>Oct</b>	<b>Nov</b>	<b>Dec</b>	<b>Total</b>
2017	1.488.406	6.071.377	9.715.091	10.544.288	9.440.175	8.477.688	6.519.508	5.823.388	3.144.902	2.779.688	2.072.863	2.334.927	68.412.301
2018	1.655.977	5.614.644	10.746.197	11.756.725	11.039.298	9.712.800	8.340.416	7.119.033	5.690.410	4.405.831	4.986.737	2.719.635	83.787.704
2019	2.232.756	6.467.862	9.744.893	9.292.341	8.884.249	8.763.685	6.000.622	5.057.549	4.287.873	5.057.382	4.038.615	2.548.588	72.376.415
2020	1.668.994	6.629.339	13.307.982	14.279.986	13.866.297	11.923.341	8.028.887	5.574.160	3.915.611	2.172.171	770.328	161.024	82.298.121
2021	53.644	5.510.223	14.915.651	15.674.433	14.221.295	10.129.020	7.969.778	5.792.323	4.702.957	2.985.412	2.149.252	2.530.298	86.634.285
2022	2.282.275	9.113.470	12.163.029	11.362.634	10.268.250	9.946.704	7.009.173	5.050.276	3.585.441	3.589.751	1.918.350	1.515.151	77.804.504
2023	944.384	7.547.430	14.440.022	14.046.673	14.433.706	13.835.761	8.606.444	7.566.517	5.546.636	5.952.232	4.599.499	3.792.303	101.311.607
2024	2.404.647	9.608.047	13.548.567	13.452.019	13.472.085	13.829.713	9.597.282	7.978.105	5.161.729	4.435.129	2.339.196	1.468.271	97.294.790
2025	1.124.713	9.726.597	15.732.109	13.496.355	14.183.463	13.790.102	11.943.120	8.107.299	6.973.667	6.398.881	4.232.717	2.970.985	108.680.007

<b>Maize</b>	<b>Jan</b>	<b>Feb</b>	<b>Mar</b>	<b>Apr</b>	<b>May</b>	<b>Jun</b>	<b>Jul</b>	<b>Aug</b>	<b>Sep</b>	<b>Oct</b>	<b>Nov</b>	<b>Dec</b>	<b>Total</b>
2017	1.041.207	313.159	142.072	146.046	261.815	976.819	3.311.277	5.522.883	5.541.485	4.654.282	4.190.567	3.503.064	29.604.677
2018	2.464.331	727.280	278.970	50.950		94.797	1.818.457	3.672.171	3.775.606	2.750.536	4.213.655	4.343.302	24.190.055
2019	2.948.769	996.269	503.992	395.915	539.224	2.548.391	6.915.252	7.668.849	5.788.340	5.510.222	4.529.035	2.922.425	41.266.682
2020	1.173.659	415.282	150.963		29.705	787.800	5.101.629	6.680.812	5.763.358	4.534.363	4.936.439	3.822.935	33.396.945
2021	2.163.079	508.407	115.120	21.991		89.213	3.041.308	4.193.451	2.546.672	1.873.523	2.740.627	3.221.639	20.515.030
2022	2.223.556	523.342	107.232	942.063	1.090.094	1.503.453	5.629.406	6.897.373	6.847.551	6.173.577	5.467.973	7.290.756	44.696.374
2023	4.864.268	1.939.801	780.053	166.552	493.526	1.230.978	5.938.066	9.245.821	9.425.038	8.021.048	6.995.920	6.457.613	55.558.685
2024	3.507.558	724.065	140.561	76.655	493.918	982.812	4.707.491	6.423.328	6.564.177	5.672.346	4.920.723	3.618.134	37.831.767
2025	3.185.203	1.317.090	474.165	48.263	68.400	568.668	3.970.781	7.335.372	6.983.167	5.692.094	5.910.880	6.036.245	41.590.327

**Week 13/2026**

Source: Cargonave.

# ANEC – Statistics 2026

## Brazilian Exports of Soybeans, Soybean Meal, Maize, DDGS, Sorghum and Wheat

<b>Sb. Meal</b>	<b>Jan</b>	<b>Feb</b>	<b>Mar</b>	<b>Apr</b>	<b>May</b>	<b>Jun</b>	<b>Jul</b>	<b>Aug</b>	<b>Sep</b>	<b>Oct</b>	<b>Nov</b>	<b>Dec</b>	<b>Total</b>
2017	931.474	887.998	964.728	1.548.497	1.374.736	1.263.667	1.227.005	1.157.873	1.109.373	1.238.618	1.165.687	1.107.124	13.976.782
2018	1.191.745	1.121.943	1.297.935	1.526.530	1.554.704	1.302.776	1.657.824	1.391.483	1.575.267	877.781	1.378.087	1.295.128	16.171.202
2019	877.759	1.070.442	1.333.120	1.472.683	1.488.083	1.636.696	1.448.444	1.180.619	1.195.768	1.596.474	1.103.098	1.363.926	15.767.111
2020	847.414	1.020.980	1.531.686	1.836.011	1.768.270	1.391.515	1.727.690	1.614.673	1.318.059	1.331.053	1.317.959	1.111.702	16.817.012
2021	986.857	890.368	1.269.402	1.576.158	1.700.837	1.840.295	1.748.287	1.279.428	1.463.151	1.337.147	1.247.006	1.542.034	16.880.969
2022	1.581.572	1.572.872	1.369.890	1.825.992	1.888.531	2.160.334	2.068.292	1.692.843	1.754.059	1.784.362	1.349.711	1.350.841	20.399.299
2023	1.432.032	1.276.948	1.805.622	1.742.051	2.276.740	2.203.920	2.166.502	1.967.084	1.906.993	1.651.830	1.926.878	1.998.067	22.354.667
2024	1.757.171	1.454.991	1.800.503	2.097.460	1.965.850	2.047.523	2.011.445	2.100.960	1.620.104	2.455.745	1.728.351	1.850.996	22.891.099
2025	1.643.745	1.502.071	2.187.165	2.153.256	2.120.409	1.667.803	2.143.950	2.021.153	1.962.405	1.725.641	2.256.635	1.696.066	23.080.298

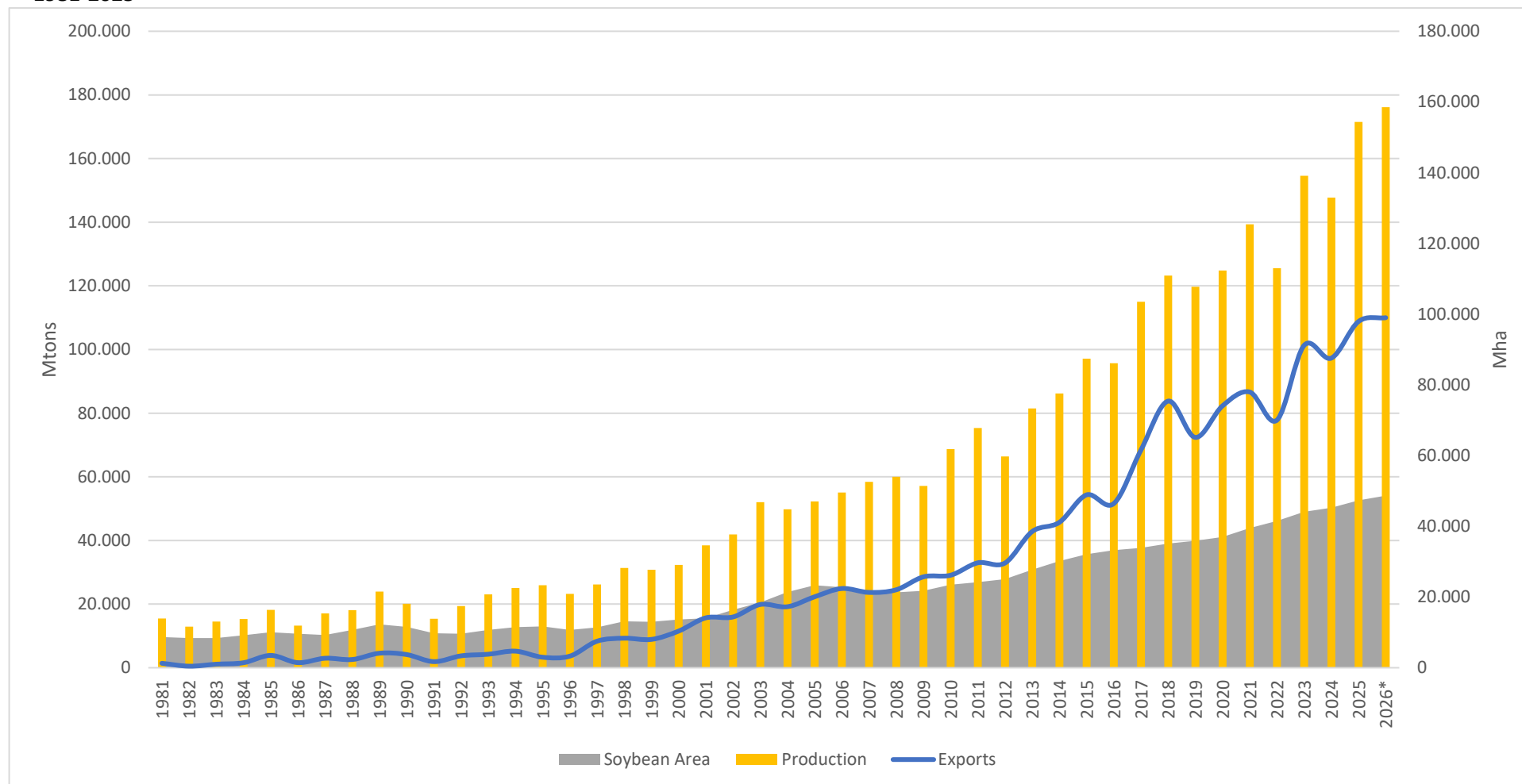
<b>Wheat</b>	<b>Jan</b>	<b>Feb</b>	<b>Mar</b>	<b>Apr</b>	<b>May</b>	<b>Jun</b>	<b>Jul</b>	<b>Aug</b>	<b>Sep</b>	<b>Oct</b>	<b>Nov</b>	<b>Dec</b>	<b>Total</b>
2017	210.384	322.809	86.145	98.326	50.732	25.000	-	30.000	26.250	-	20.300	85.831	955.778
2018	24.200	98.618	-	-	-	-	-	-	-	-	32.602	229.533	384.953
2019	244.136	84.290	65.015	-	-	-	-	-	-	16.000	-	59.949	469.390
2020	95.020	104.479	61.561	21.200	-	-	-	-	-	-	14.009	367.329	663.599
2021	407.701	82.957	-	-	-	-	-	-	-	19.988	59.100	538.640	1.108.386
2022	695.953	925.264	508.164	156.427	109.099	-	-	-	-	-	116.813	689.256	3.200.976
2023	765.089	573.988	603.098	212.556	121.385	58.000	70.380	52.000	-	66.462	200.705	488.876	3.212.539
2024	715.671	594.906	855.796	129.603	23.973	-	5.088	-	-	17.034	95.931	305.440	2.743.442
2025	660.691	559.704	205.829	51.797	-	-	-	-	-	-	336.133	510.816	2.324.969

Week 13/2026

Source: Cargonave.

Soybeans: Planted Area (Mha), Production and Exports (Mtons)

1981-2025



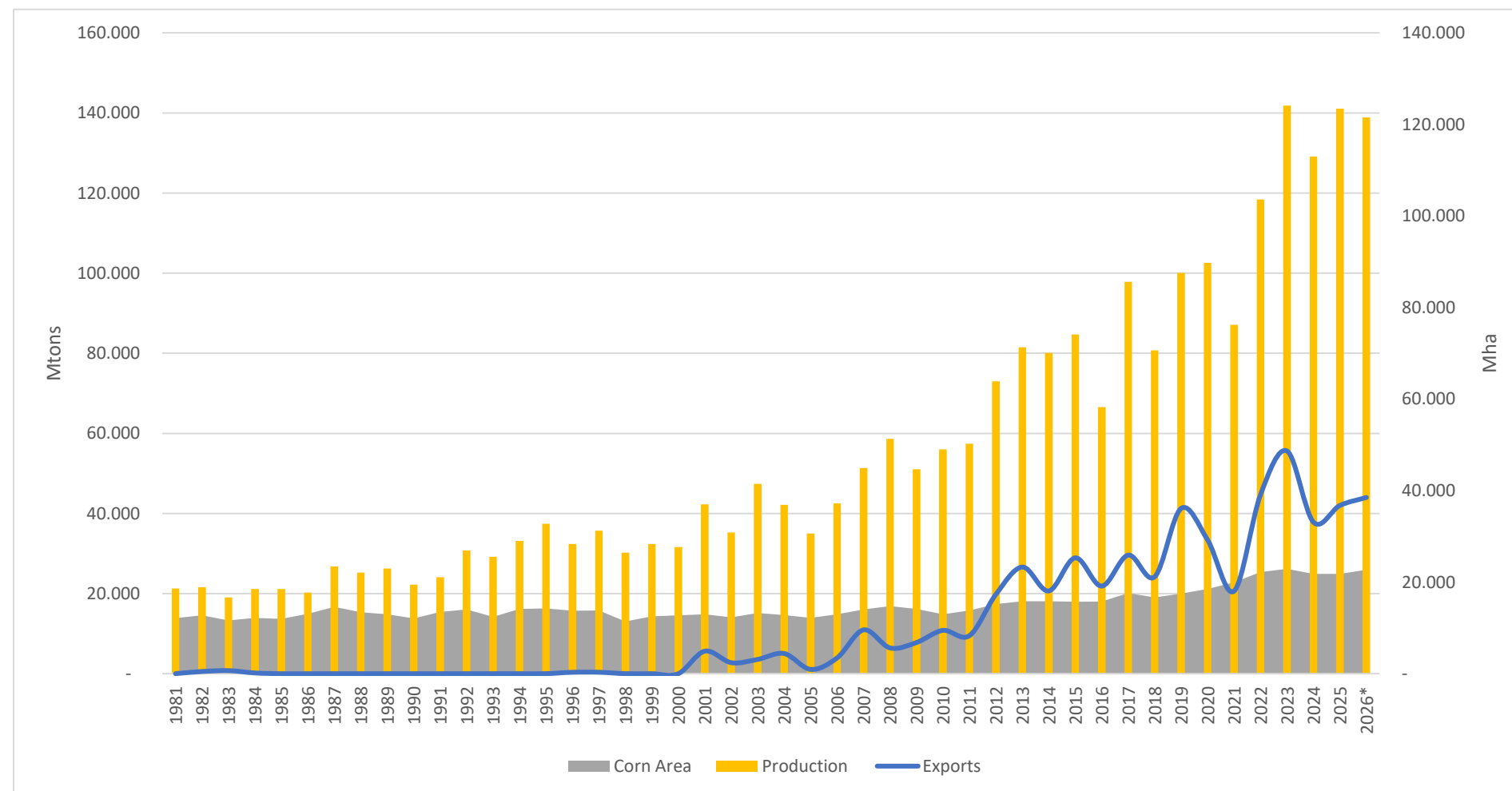
Week 13/2026

Source: Cargonave.



# Maize: Planted Area (Mha), Production and Exports (Mtons)

1981-2025



Week 13/2026

Source: Cargonave.